

You will rise to new heights at Northwest College . . .

. . . spiritually
. . . academically
. . . socially
. . . and in ministry

The NORTHWESTERNER

A SPECIAL
PROSPECTIVE
STUDENT ISSUE

A PUBLICATION OF

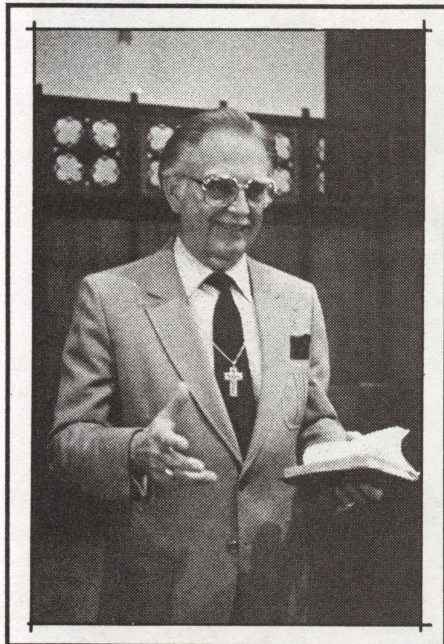
NTC Northwest College

PLICATION ENCLOSED

BASEMENT



FROM THE PRESIDENT



Dear Student:

I'm pleased to share Northwest College with you in this way. You have learned about us before through NC students, through your pastor or associate minister, through alumni, through one of our Summer Ministry teams or some other way . . . or perhaps you have never heard about us.

As you read this special issue of the *Northwesterner*, I believe you will get a glimpse of how you can fit into the exciting life of NC. God has a place for you on our campus and in our classrooms. You can **make** it your place! You may want further information. If so, write us, or better yet, visit our beautiful campus. Or, even apply for admission right away. Many helpful items of information will come to you immediately. We'll send them!

I am praying for you that God will guide you and unfold before you the wonderful life He has planned for you.

Yours and His,

Dr. D. V. Hurst
President

Perspective

Northwest College is a Christian institution of higher learning operated under the control of the District Councils of the Northwest Region of the Assemblies of God. We offer four- or five-year programs on the senior college level aimed at preparation for various forms of Christian ministry and careers, and two-year basic programs similar to those found in community colleges.

Philosophy

NC's concept of education is distinctively Christian in the evangelical sense. We recognize the authority of the Bible as a divine communication of truth. We view man as having been created by God with intellectual, physical, social, and spiritual potentialities which require development if he is to be a whole person whose life is useful, complete, and satisfying.

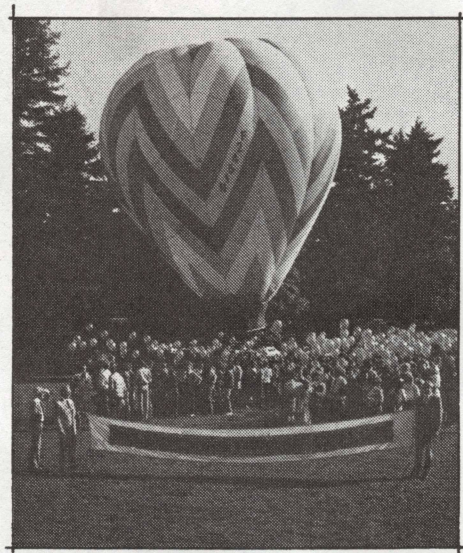
History

NC was founded in 1934 in the facilities of Hollywood Temple, Seattle, under the direction of Dr. Henry H. Ness, the first president. The College was originally known as Northwest Bible Institute. In 1949, Dr. C. E. Butterfield succeeded Dr. Ness and, at the same time, the College's name was changed to Northwest Bible College. Then, in 1962, the present name, Northwest College of the Assemblies of God, was adopted, representing a new stage in its development. The College progressed from a three- to a four-year Bible curriculum in 1948, and in 1955 a Liberal Arts division was organized. In 1966, Dr. D. V. Hurst assumed the presidency of Northwest College.

Accreditation

Northwest College is unique in that it is an accredited member of both the Northwest Association of Schools and Colleges and the American Association of Bible Colleges.

NC is approved by the Washington State Department of Education for the training of veterans; Department of Justice, for the training of foreign students; U.S. Department of State for participation in the Exchange Student program.



Contents

NC Up Close	2, 3
Spiritually	4, 5
Socially	6, 7
Academically	8, 9
Ministry	10, 11
Application Instruction . . .	12
Application	13, 14
Financial Aid	15
Finance Bulletin	16



Campus

NC has a beautiful semi-wooded tract of fifty-five acres. The modern campus has nineteen buildings including the married student apartments, dorm residences, classrooms, administration offices, Student Union Building, library, gymnasium and the Chapel.

Location

NC is one of America's most beautiful small college campuses, overlooking magnificent Lake Washington and the Olympic Mountains, fifteen minutes from Seattle, Washington, in the Great Pacific Northwest.

Driving to NC?

Northwest College is located in Kirkland which is east of Seattle and Lake Washington and north of Interstate 90, just off Interstate 405. Travelling on I-405 take the N.E. 70th exit (exit #17) west approximately 1/2 mile to the stop at 108th Ave. N.E. Turn left onto 108th Ave. N.E. and follow slightly more than 1/2 mile. NC is on the left.

We invite you to come visit us soon. We would love to give you a personal tour. Please give us a call so we can assist you. (206) 822-8266 Ext. 256. We'll be happy to have you as our guests!

Calendar

AUTUMN QUARTER 1984-85

Registration	
New Students	Sept. 17
Spiritual Emphasis Week	Oct. 1-5
Christmas Interim	Dec. 6-Jan. 1

WINTER QUARTER

Registration	
New Students	Jan. 2
Spiritual Emphasis Week	Jan. 14-18
Spring Interim	Mar. 14-19

SPRING QUARTER

Registration	
New Students	Mar. 20
Campus Day	Mar. 29
Spiritual Emphasis Week	Apr. 1-5
Baccalaureate	May 25
Commencement	May 26
Final Exams	May 28-30

SUMMER QUARTER

Registration	
New Students	June 3
Sessions End	June 28

Student Body

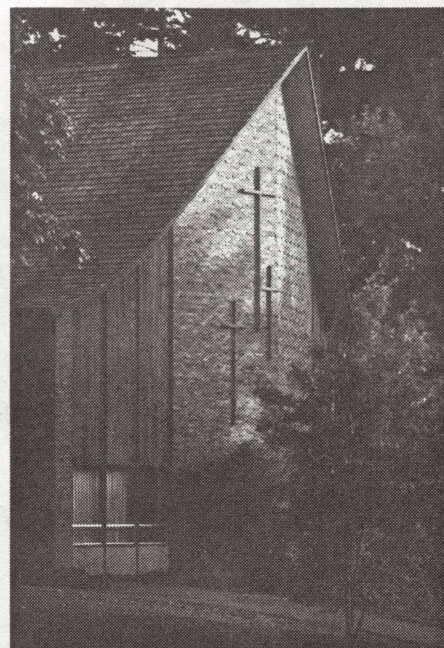
NC is small enough to be very personal yet large enough to offer a full, well-rounded program. The Fall 1984 enrollment was 780. These students came from approximately thirty states and a dozen countries, representing eighteen denominations. The sponsoring organizations, the Assemblies of God, makes up 4 out of 5 members of the student body.

Faculty

They are dedicated Christians who are professionally trained. All full-time faculty have a Master's degree and a significant number have attained doctoral level.

Degrees

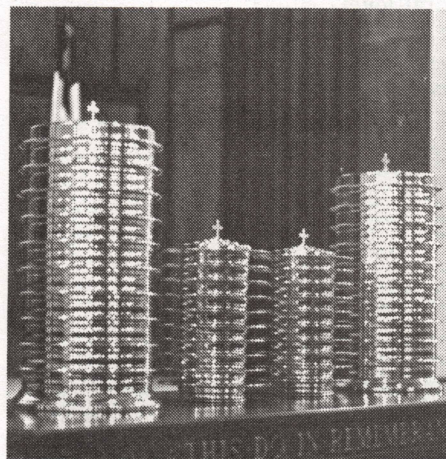
Th.B., B.A., and A.A. degrees are offered.





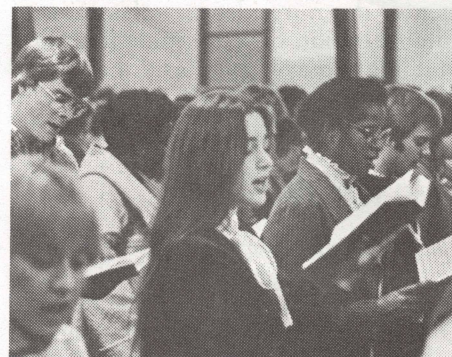
Chapel

Chapel is the focal point of life at NC. The daily chapel time provides opportunities to hear well-known speakers from around the world. Faculty members and students regularly share in the ministry of the Word and music. Once each quarter, a week of spiritual emphasis takes place on the campus. These special times are often turning points in the decision-making process during college. The warmth of spiritual commitment combined with rich personal fellowship leads to the development of a well-rounded Christian attitude in life and service.



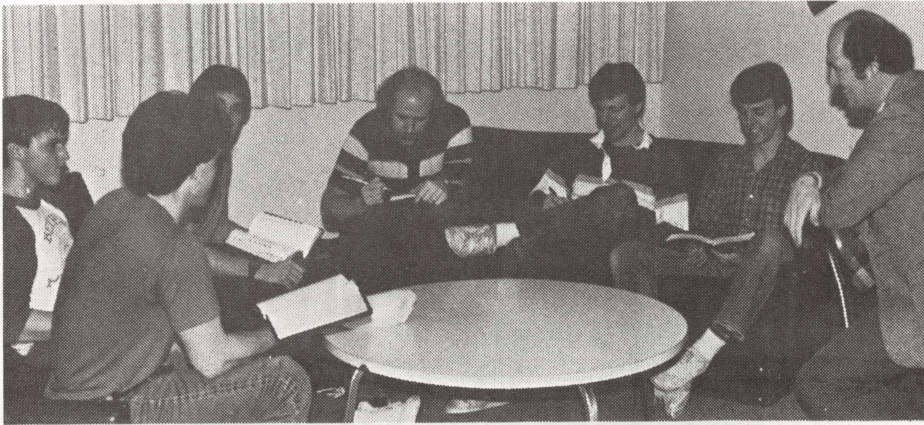
Doctrinal Statement

Northwest College subscribes to the Statement of Fundamental Truths of the Assemblies of God. It believes in the Inspiration of the Scriptures; Christ's death, resurrection, and ascension; justification of faith; the Baptism with the Holy Spirit; holiness of life; divine healing; the imminent return of Christ; the millennial reign of Christ on earth; and the eternal rewards and punishments.



Atmosphere

Everywhere you go on campus, you can hear someone singing a gospel song or chorus, or expressing Christ's love in a variety of ways. Oh yes, this is a college campus where lots of fun and excitement prevail, but the reason behind the joy is a centrality that comes from a relationship with Christ. NC students have first committed their lives to Christ.

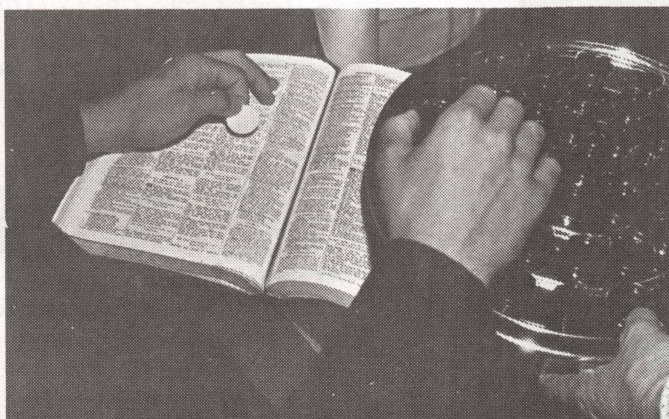


Growing in the Word

Students and faculty together discover the joys of discipleship as they study the scriptures. One goal: to become more like the Master. That adds an exciting dimension to college life at NC. Regardless of what the class may be, the Word of God speaks to that subject and is relevant today.

Prayer

One very special aspect of the spiritual life of NC is the emphasis on prayer. Students have the privilege of regular prayer cells within the dorm. The support of classmates, faculty and staff is a tremendous boost whenever the need for special prayer arises. Classes often begin or end with either a prayer, chorus or a scripture reading. These reinforce the commitment of Northwest College to the building up of the body of Christ. Often times you see a student sitting quietly, having communion with God. It is very reassuring to meet with a professor, administrator, staff member or fellow student and know that you share a common bond and can pray together, whatever the occasion.



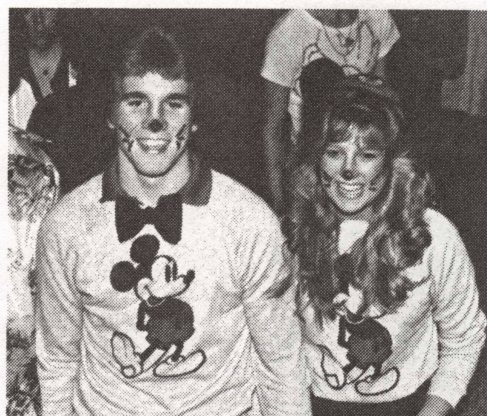
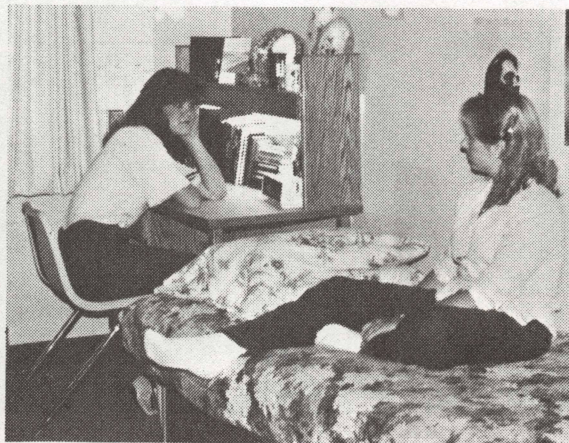
Northwest College has been helping to meet the challenge for 50 years.
1984 Year of Golden Jubilee



Student Life

Students come to NC from all around the world. While they are here, they establish friendships that are a source of encouragement and strength for a lifetime. Being surrounded by a caring faculty and student body makes the college adjustment much easier.

The love of Christ is the common bond that enables the NC student to face the pressures of college life. A senior recently shared that NC was a microcosm of the book of Acts, a community working and striving together to be all that God wanted them to be. Yes, student life at NC is exciting and stimulating. Young people are alive in active pursuit of God's best.



Student Activities

NC provides many opportunities for involvement. Over ten percent of the student body is in leadership — Associated Student Body (ASB), World Outreach Ministries (WOM), Associated Women Students (AWS), Associated Men Students (AMS), Married Student Association (MSA), and the various class officers.

The greater Seattle area also affords the student unlimited opportunities whether it be sports in the Kingdome, water-skiing on the many lakes, or snow-skiing in the Cascades located only an hour's drive from the campus. The metropolitan area also provides ample cultural and educational opportunities.



Student Housing

The NC students enjoy the beautiful surroundings of a spacious and modern campus. Students are housed in one of the five dormitories; or, if they are married, they may live in the Firs, a 36-unit married-student apartment complex. The lounges in the dormitories are a frequent meeting place for students to enjoy the fellowship of playing a table game, singing around the piano, or just talking.

Athletics

Northwest College is a member of the Pacific Northwest College Conference and the National Little College Athletic Association. Competitive team sports include men's basketball and soccer, and women's basketball and volleyball. We also have an intramural program involving a large portion of the student body.

Both the men's and women's basketball teams won post-season tournaments which qualified them for national Christian college championships the season.



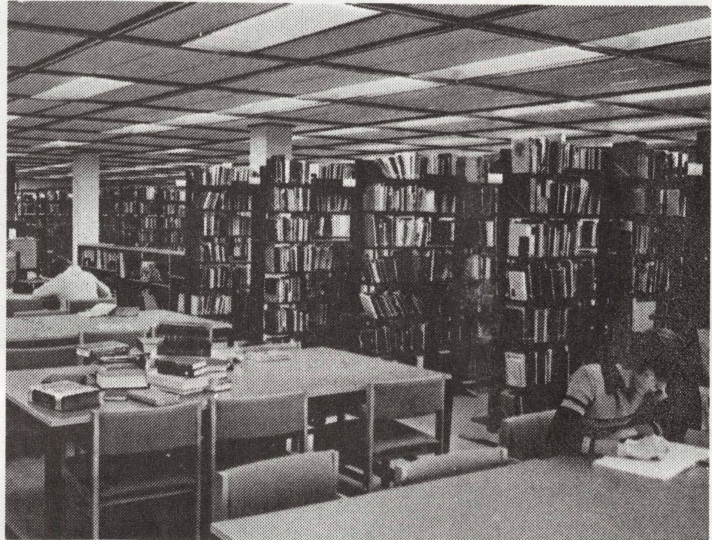
Go Eagles!



Academics

NC carries a high degree of academic excellence. The quality and on-going development of the faculty, the tenure of personnel and the continual endorsement of the accreditation associations speak to this fact. NC has a good record of seeing its graduates in significant places of responsibility around the world.

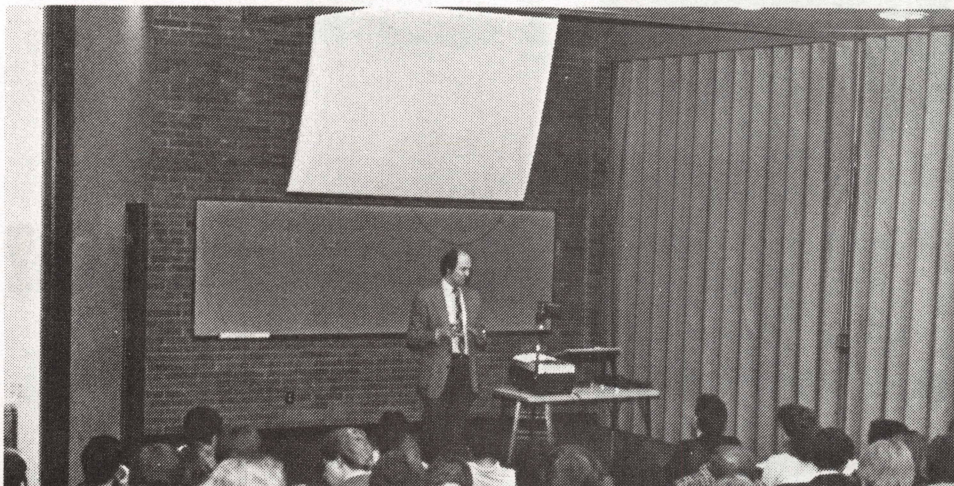
Why should you attend Northwest College? NC offers you the high level of academic training you desire and the spiritual surroundings and support that will help you grow. NC is committed to train you, the student, to meet the challenges of your day. "And Jesus increased in wisdom, and stature, and in favor with God and man." (Luke 2:52)



Elementary Ed Major

NC's newest four year program is the Elementary Education Major. Full certification from the State of Washington is anticipated by September 1984. Graduates of the program will have the possibility of initial state credentials as elementary teachers. Such credentials will be applicable to both the public and private elementary schools. We are very excited to have this new major as part of our curriculum.

New Heights!



Religious Studies

Northwest College is grounded in a solid biblical foundation. Many classes are offered that range from Old Testament studies and New Testament studies, to theology and missions, and to church education, sacred music and biblical languages.

Almost seventy percent of the students at NC are enrolled in the Bible College Division of studies. This speaks highly of the program and the students. These students not only study for personal enrichment but for the ability to reach out and minister to those who are part of a hurting world. Many of the alumni of the Bible Division are serving God throughout the United States and around the world.

Also offered within this program is the ETТА certificate. This is from the Evangelical Teacher Training Association that certifies qualified individuals to teach within a Christian educational facility in any location in the United States or in a foreign country.



General Studies

Today, the professional and business world is very demanding and competitive. Northwest offers a program in general studies that trains individuals and helps them reach their potential while adding Christian ethics and values.

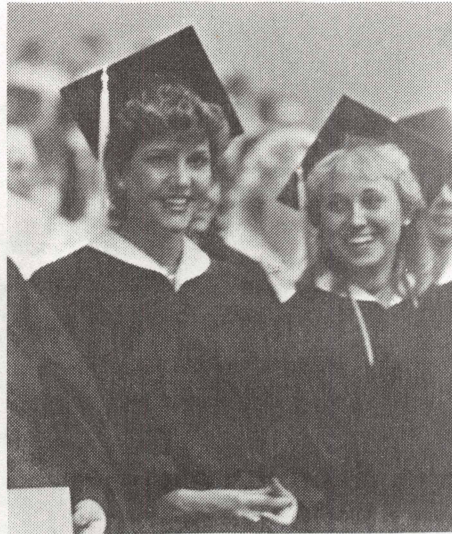
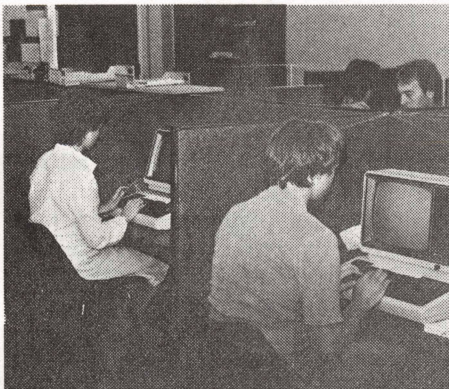
In offering general studies, NC can provide a well-rounded education for all of the students. This is very important in a world that deems knowledge a necessary quality in communication and relationships.

Within the Religious Division majors, the general studies are part of the requirement and may also be used as the personal electives that each student is required to include in their academic calendar.

One of the exciting new courses of study in the general studies division is the computer sciences that have been devised for specific application within the church.

Academic Calendar

NC offers three ten-week quarters (evening classes each quarter), one four-week summer session, one flying seminar, and frequent workshops.



Associate of Arts 2 Year Programs (Junior College)

- Business
- General Science
- Humanities
- Mathematics
- Music
- Natural Science
- Oral Communications
- Pre-Education
- Pre-Nursing
- Social Science

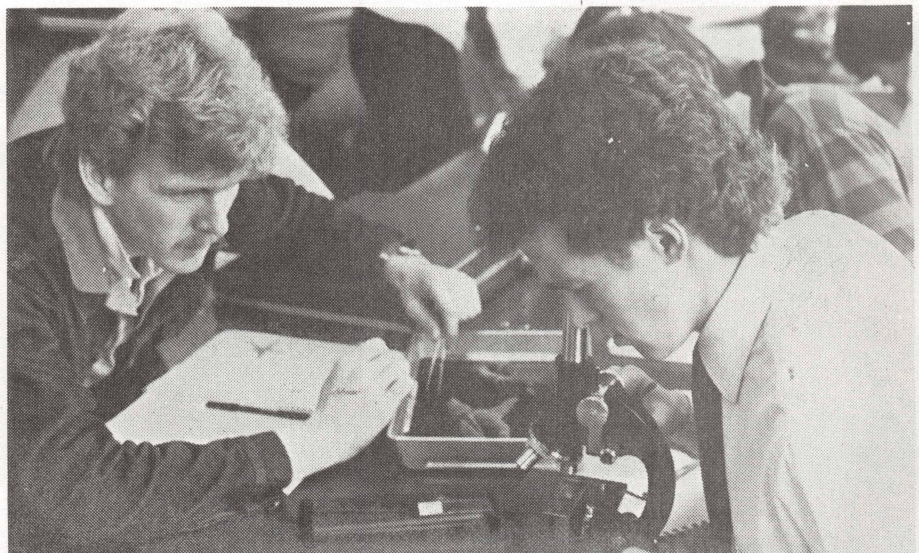
Bachelor of Arts 4 Year Programs

Majors

- Biblical Literature
- Christian Education
- Elementary Education
- Pastoral Ministries
- Religion and Philosophy
- Missions
- Sacred Music
- Youth Ministries

Minors

- Business (Church office)
- Christian Education
- Communications and Preaching
- Counseling Ministries
- Early Childhood Education
- History
- Missions
- New Testament Greek
- Pastoral Studies
- Philosophy and Apologetics
- Sacred Music
- Youth Ministries

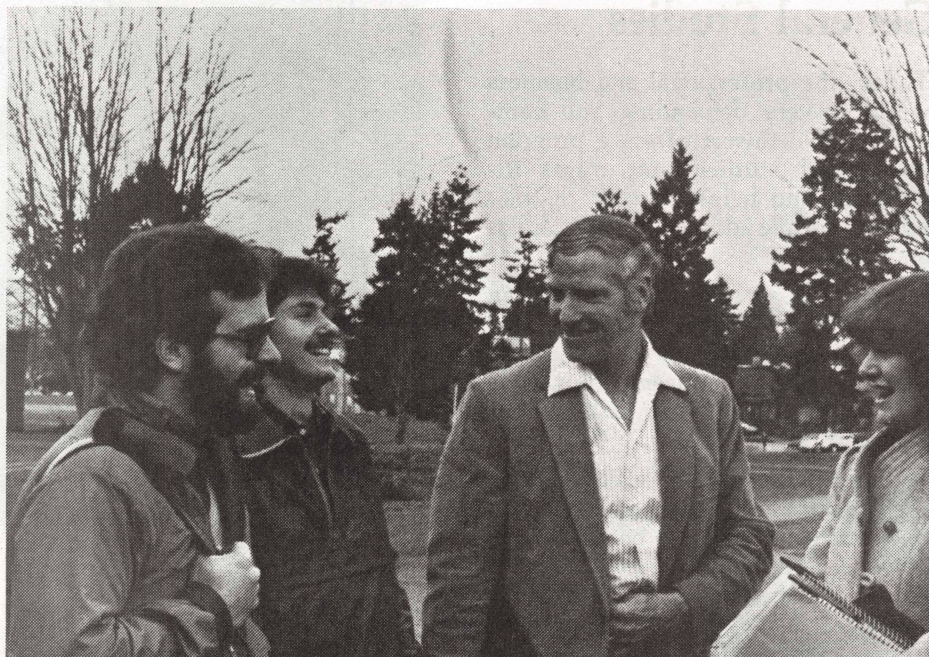




Committed to Minister

NC is wanting everyone to find his or her ministry. Ministry is doing whatever God has called us to do for His honor and glory, whether it is mowing the campus lawns, teaching a class, typing a paper, leading a cell prayer meeting, counseling with a friend, singing a song, preaching or giving a cup of cold water in His name. All of this and much more is what NC and ministry is all about.

The men and women of NC are committed to helping you find your place of ministry, whether it is in full-time Christian service or in an ordinary everyday job. Where the Lord places you can become your field of ministry. We want to help you find that place in His kingdom!

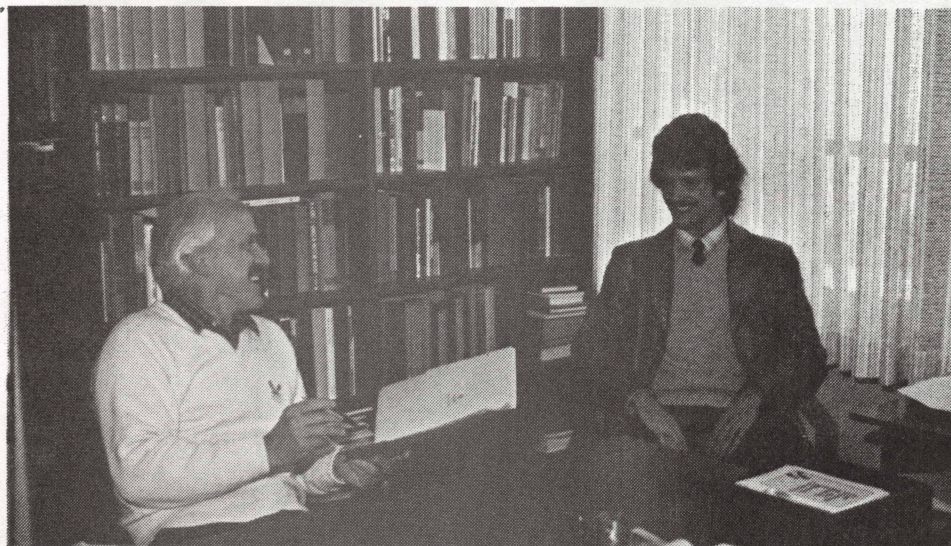


Administration, Faculty and Staff

NC is strengthened by the commitment of administration, faculty and staff. The administration is concerned about the welfare of each student and seeks to be known by the student body as a whole.

The faculty are known for their personal ability in assisting students to become all that God intends for them. The restriction of class size enhances their availability to the student to offer help. They have a great effect on students' lives here at NC.

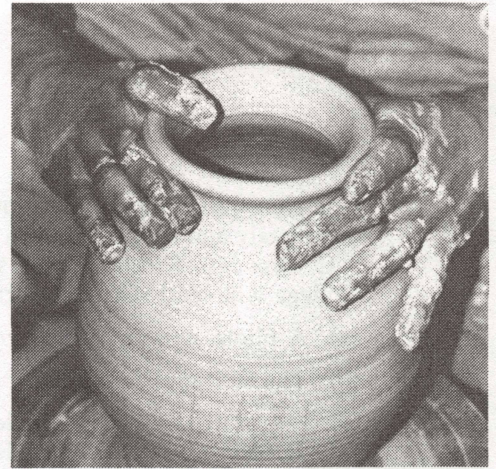
A host of committed Christians serve eagerly on our staff in service to the students. They include: ministries in the library, financial aid, residence halls, food services, business office, and other strategic areas of ministry.





Internships

Internships are an important facet of the college experience for many of the programs offered at Northwest. These internships not only meet the academic requirements of the specific course, but also give an invaluable and practical experience "in the field." In cooperation with the college professor, the student puts into practice the classroom instruction that has been given. The internship may be in a variety of ministries within the church or community. Many times, while a student is involved in an internship, he is made aware of God's specific call and plan for his life and ministry. That's learning by doing!



Placement

NC is most anxious to help the graduate find his place in ministry. As a service to the B.A. graduate, a placement bulletin is made available to the pastors within the region so that their prospective employer may know something about the graduate who is wanting to find a position. Many have found this service to be very helpful. Hundreds of NC grads are scattered around the world fulfilling God's call on their lives.



Let Light Shine Out

Let light shine out in the great northwest; go tell the Savior's grace; from college halls to lands afar, bring hope to every race. Lord, bless thy work at NC; we turn our hearts to Thee; oh, thrust us out and lead us on, to promised victory.

**Northwest College Alama Mater
by Maxine Williams**



Practical Experience

The World Outreach Ministries (WOM) organization provides many opportunities for students to become actively involved in ministry. This organization consists of Ministry Interest Groups (MIGS): World Outreach, Gospel Teams, campus, children, youth and music, evangelism, community service, drama, and servicemen. Instruction and practical experience in Christian service are provided through these opportunities.

The full development of an individual's ministry can only come about as practical experience is made available. For example, pastoral students learn by doing: mock weddings, baptismal services, speaking in class and chapel, serving communion, and the list goes on and on for each of the major emphases at NC.



Application Instructions

12

Check List:

- ☐ Application filled out (pages 13, 14)
- ☐ Brief sketch of your background enclosed
- ☐ Photo enclosed
- ☐ Application fee enclosed
- ☐ Transcript requested

Step 1. Complete the College Application form in ink or typewriter (see page 13, 14). Be sure that all parts have been answered completely and that it has been **signed**. Mail the application to the College Admissions Office, Northwest College, P.O. Box 579, Kirkland, WA 98033. NOTE: You need NOT have your references **sign** your application. The College will send reference forms directly to them for completion. Enclose with the application the following:

- (a) A photo or snapshot of yourself (must be submitted even if application is presented in person).
- (b) The \$15 application fee.

Step 2. On a separate sheet of paper clearly write in ink or type a brief sketch of your background in which you include: **(MAIL SKETCH WITH YOUR APPLICATION)**

- (1) A description of your conversion to Christ:
 - a. Date
 - b. Circumstances
- (2) A statement concerning your Christian walk to the present:
 - a. Has your Christian life or walk been a consistent, growing experience?
 - b. Have you received the Baptism of the Holy Spirit?
- (3) Briefly list the kinds of Christian service in which you have been involved (youth, Sunday School, group outreach ministries, etc.).
- (4) A statement on your future plans and how they relate to Northwest College.
- (5) Date and signature.

Step 3. At the same time, file a request for your **high school transcript** by addressing a letter or card to your high school records office requesting to have your transcript sent to the College Admissions Office. **You may use the clip form at the bottom of this sheet for this purpose.**

If you have attended a college, you should do the same to have your college record sent to the Admissions Office.

When you have completed the above steps, the College Admissions Office will take care of the remaining procedure until your application has been acted upon. Normally, it requires about two weeks to complete the procedure, depending on how promptly the references respond and on how your transcript is sent to us.

TRANSCRIPT REQUEST

To: Records Office

Student's Name _____
(Print) (last) (first)

Please forward a transcript of my record to:

**ADMISSIONS OFFICE
NORTHWEST COLLEGE
P.O. BOX 579
KIRKLAND, WA 98033**

Signed _____

Address _____

ATTACH
RECENT PHOTO
OR
SNAPSHOT HERE

Northwest College

P.O. Box 579
Kirkland, WA 98033
1-(206)822-8266

13

APPLICATION FOR ADMISSION

(PLEASE READ THE FOLLOWING INSTRUCTIONS BEFORE FILLING OUT FORM)

Applicant must be of approved Christian character fulfilling spiritual and academic requirements as stated in the school catalog.

All questions must be answered in full with ink or typewriter and a snapshot or photograph must be attached before the application will be considered by the Admissions Committee. **Be certain to enclose the \$15 application fee. (Reapplication \$5)**

Check: Application to ☐ Division of Biblical Studies (Bible College) ☐ Division of General Studies (Junior College)

Beginning Freshman ☐

Transfer ☐

PLEASE TYPE OR PRINT

I. GENERAL INFORMATION

1A. Name _____
LAST FIRST MIDDLE

1B. For admission to (check one term) 19_____
☐ Fall ☐ Winter ☐ Spring ☐ Summer only

2. Permanent home address _____
STREET AND NUMBER CITY STATE ZIP CODE

3A. Present address _____
(if different from home) STREET AND NUMBER CITY STATE ZIP CODE

3B. Social Security Number _____ / _____ / _____

4A. Age _____ Date of birth _____ Place of birth _____ 4B. Phone (include area code) _____

5. Nationality or race _____ Country of citizenship _____ () _____

6. Single ☐ *Married ☐ Widowed ☐ Divorced ☐ Divorced, remarried ☐ Engaged ☐

*If married, number and ages of children _____

7. Church of which you are a member _____

II. COLLEGE PLANS AND INTERESTS

1. College major or program in which you are most interested _____

2. Vocational plans after graduating from College _____

III. FINANCES

1. Do you now have adequate financial resources to attend Northwest College? ☐ YES ☐ NO

2. Will you need financial aid? ☐ YES ☐ NO

3. Check if you are eligible for any of the following:

☐ V.A. benefits ☐ Scholarship(s) _____

☐ Social Security Educational benefits _____

☐ Vocational Rehabilitation ☐ Other special benefits _____

4. Check if you wish information on any of the following:

Federal or State Aids:

☐ Federal or State Grants

☐ Federal Student Loans

☐ Alaska Student Loans

College Scholarships/Discounts

☐ Freshman Academic Scholarship

☐ Tuition discounts for ministers, missionaries, their dependents, student spouses.

☐ Bible Quiz/Teen Talent

☐ Mr./Miss C.A.

Employment:

☐ On-Campus ☐ Off-Campus

Give work experience _____

Clip Here and Mail

IV. EDUCATION

1. Last high school attended _____
2. Did you graduate? _____ When? _____ If not, how many years completed? _____
3. If still attending high school give expected date of graduation _____
4. List below all colleges (or other post-high school institutions) attended:

Name	City	Dates attended	Course	Degree (if any)

5. Have you or will you request high school and college (if attended) transcripts? _____

V. FAMILY

1. Name of parents _____
FIRST MIDDLE LAST
2. Address _____ Telephone _____
NUMBER AND STREET CITY STATE ZIP CODE
3. Occupation _____ Company or employer _____
4. Answer, if single: Are parents Christians? _____ Denomination _____
5. Number of members of family older than you _____ younger _____
6. Are any of your relatives alumni of Northwest College? _____ If so, Name(s) _____

VI. HEALTH

1. Have you had any medical treatment for any disease, injury or disability within the past five years? _____
If so, for what? _____
2. Note: Medical report form must be completed upon approval of application. Form provided by college.
Completed medical form must be in admission's office before registration week.

VII. BIOGRAPHICAL BACKGROUND AND CHRISTIAN EXPERIENCE

1. On an attached piece of paper, write out a brief biographical sketch of yourself, including a statement on your conversion, Christian walk, experience as to the infilling of the Holy Spirit, Christian service, and future plans
☐ Check here when completed, and continue with the application.
2. Have you ever used alcoholic beverages, tobacco or narcotics? _____
If yes, which? _____ Date of discontinuance? _____
3. Check here ☐ if you have ever incurred an arrest record (excluding minor traffic violations) or have been a member of an organization advocating or practicing violence. Attach statement giving details. (Does not necessarily exclude you from admission to the College).

VIII. REFERENCES

- *Pastor _____ Denomination _____
Address _____
- *Church Board Member _____
Address _____
- *Businessman _____
Address _____
- *If parent, give another reference.

SIGNATURE. In applying for admission to Northwest College, I affirm that I will abide by its stated purposes and standard of conduct, and in consideration of the purposes and objectives of confidentiality of the character-reference process, I hereby waive access to any documents as may be acquired by the College in the admissions process relating thereto.

Signature _____ Date _____



Financial Aid: Plan Ahead!

15

Money For College

Money is available to help you finance your education! We are here to assist you in any way we possibly can to find those resources. We believe that you can meet your educational goals if you work hard and carefully plan your financial resources with which to pay for your schooling. Planning ahead should involve you and your family in active saving for college expenses well ahead of your actual enrollment in college. These resources, along with financial aid used to help you pay for college expenses you cannot cover, will help you achieve your educational goals.

Financial aid includes **grants and scholarships, student loans**, and earnings from **employment**. The Financial Aid Office at Northwest College stands ready to help you apply for financial aid and to give you guidance concerning the type(s) of aid for which you may qualify.

Eligibility

Eligibility for financial aid is determined by establishing proof of financial need by completing the Financial Aid Form (FAF) and the Financial Aid Supplement, both available in the Financial Aid Office.

To apply for financial aid, you must be a United States citizen, a permanent resident, or one who is in the U.S. for other than temporary purposes. You must be accepted for admission to NC and be enrolled for at least six credit hours per quarter.

Need More Information?

Please send me more information about Northwest College

Name _____

Address _____

City _____

State _____ Zip _____

Telephone (_____) _____

Year of high school graduation _____ Birthday ____/____/____

My interest is:

- ☐ Pastoral Ministries
- ☐ Youth Ministries
- ☐ Missions
- ☐ Music Ministries
- ☐ Elementary Education
- ☐ Counseling
- ☐ Early Childhood Education
- ☐ Junior College

Please also send:

- ☐ Full Catalog
- ☐ Financial Aid Information
- ☐ Campus Day Information
- ☐ Place on Mailing List
- ☐ Additional Application
- ☐ _____ Other

Types of Financial Aid Available

Approximately half of our students receive financial aid from at least one of the three basic types of financial aid available:

1. **Grants** are gift aid and are awarded on the basis of financial need. **No** repayment is required. These include: Pell Grant, Supplemental Educational Opportunity Grant, and Washington State Need Grant. **Scholarships** are available to NC students for outstanding academic performance in high school or for service to NC. Tuition discounts are also available to dependents of ministers and missionaries, student spouses, ministers, missionaries, and their wives.
2. **Loans** will offer you the opportunity to defer the cost of your education until the completion of your college program. At that time you will be responsible for repayment of the loan at a reduced interest rate. These include: National Direct Student Loan (apply through FAF) and Guaranteed Student Loan (apply through separate GSL application). Loans are also available to parents of dependent students (called PLUS or ALAS loans).
3. **Employment** opportunities are plentiful in the greater Seattle area of NC students. Some on-campus jobs are available. State Work Study jobs are also available off-campus for NC students. Regular off-campus employment opportunities can be found through our Job Search office.

Application For Financial Aid:

1. You and your parents (if you are dependent) must fill out the Financial Aid Form and send it to College Scholarship Service to be considered for all the financial aid that may be available through federal and state aid programs. If you want to apply **only** for the Pell Grant, you should fill out the Application for Federal Student Aid (AFSA). Both applications need not be filled — if the FAF is filled, no AFSA is necessary.
2. You must also fill out an institutional application for aid (called Financial Aid Supplement) and submit copies of IRS 1040 Forms, along with your parents' tax form, for the last calendar year completed (on which your financial aid eligibility is based) to the College Financial Aid Office. These forms are kept confidential and used to verify your FAF application.
3. You should send the FAF to College Scholarship Service and submit the Financial Aid Supplement and income tax forms to the College Financial Aid Office before the preferred deadline of May 1, or as soon as possible prior to the quarter for which you are requesting aid. You should, however, contact the Financial Aid Office when you first apply to NC, regardless of the time of year, so that the aid application process can begin as early as possible.
4. Fill out the section below and be sure and check Financial Aid Info. Do it today!

Clip and Mail to:

NORTHWEST COLLEGE Public Relations Dept.
P.O. Box 579, Kirkland, Washington 98033
Telephone: (206) 822-8266

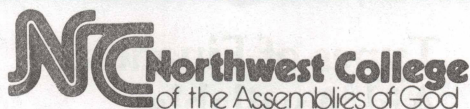


Finance Bulletin

DV HURST LIBRARY, NORTHWEST COLLEGE



30579003188486



P.O. Box 579 Kirkland, WA 98033

1984 - 1985

1. Cost Summary for 1984-85

Costs	Fall	Winter	Spring	Annual
Registration	\$ 15.00	\$ 15.00	\$ 15.00	\$ 45.00
Tuition	950.00	950.00	950.00	2850.00
General Fee	150.00	150.00	150.00	450.00
Student Fee*	29.50	8.50	20.50	58.50
Insurance**	29.25	29.25	29.25	87.75
Board/Room***	628.00	598.00	598.00	1824.00
	\$1801.75	\$1750.75	\$1762.75	\$5315.25
Additional Options				
Books and Supplies	\$ 100.00	\$ 100.00	\$ 100.00	\$ 300.00
Parking Permit	3.50	3.50	3.50	10.50
Music	75.00	75.00	75.00	225.00

* For continuing student

** Required for all full-time students unless written evidence of coverage under another plan is submitted to the Business Office within two weeks after the beginning of classes.

*** Perks Hall 400 — East floor — subtract \$10.00 per quarter
Gray Hall and Perks Hall — West — Add \$25.00 per quarter
Singles — add 25% per quarter
Crowder Hall #5 — add \$50.00 per quarter

Confirmation Fee \$25.00

This becomes a credit to student's account but is forfeited if the student does not attend and fails to give advance written notification of his intent.

Residence Hall Deposit \$50.00

Not part of account. Remains on deposit as long as the student is registered to return. (15.00 check-out, \$35.00 damage) Deposit is forfeited if the student withdraws during the quarter.

Key Deposits

Residence Halls \$5.00

Not part of account, refunded when keys properly turned in.

Mail Box (Crowder Hall) \$5.00

II. Payment Policy

1. Accounts due and payable in full on the first day of classes.

2. In cases when this is not possible, the following Deferred Pay Plan is acceptable:

(Revised by Board of Directors, May 1982)

DOWN: All fees, plus ½ tuition, board, room
approximately\$1200.00

30 Days Before Finals: Balance of account 797.75
(Example is shown for fall — winter and spring
amounts would vary.)

III. Sources of Financial Assistance

A. Personal Potential

1. Contribution from parents, relatives and friends.
2. Savings from summer employment.
3. Earnings from part-time employment during school.

B. Northwest College (see Financial Aid Facts or College Catalog for descriptions)

1. Freshman Scholarship
2. Ministerial Assistance Grants
3. College Service and Missionary Internship Scholarships
4. Alumni, Lay Council and other scholarships
- C. Government Aid
 1. Grants — Apply by filing the Financial Aid Form with College Scholarship Service
 - a. Pell (Basic) Grant
 - b. Supplemental Educational Opportunity Grant
 - c. Washington State Need Grant
 2. Loans
 - a. National Direct Student Loan — Apply through filing the Financial Aid Form
 - b. Guaranteed Student Loan/Federally Insured Student Loan — Lending institutions includes banks, credit unions, savings & loan associations, etc. Federally Insured Student Loans applications are used for those states without state guaranty agencies.
 - c. Alaska Student Loan — Contact the Alaska Commission of Postsecondary Education
 - d. Parent Loans for Undergraduate Students — Apply through PLUS loan application
 3. Employment
 - a. College Work/Study — on-campus employment funded partially by the federal government
 - b. State Work/Study — off-campus employment program as prescribed by the Council for Postsecondary Education
 - c. Off-Campus Employment — Contact the Off-Campus Employment Director for job possibilities within the greater Seattle area.
 4. Other Government Aid
 - a. G.I. Bill
 - b. Veterans Administration Benefits
 - c. Social Security Educational Assistance
 - d. Vocational Rehabilitation (V.A. and state programs)
 - e. Bureau of Indian Affairs

Apply early for financial aid and other government aid. Allow eight weeks for processing your Financial Aid Form by College Scholarship Service and to receive your notification of eligibility from Pell Grant.

Students should have their finances arranged with adequate money on hand by the beginning of each quarter. They should have definite knowledge (in writing) of their financial aid awards, Pell Grant eligibility and/or Guaranteed Student Loan/Federally Insured Student Loan approval by their lending institution before they register each quarter.

WHO TO CONTACT FOR FURTHER INFORMATION

Financial Aid
LaWonna Wilson
Northwest College
P.O. Box 579, Kirkland, WA 98033
Telephone number:
(206) 822-8266, Extension 230

Business Manager
Owen S. Hodges
Northwest College
P.O. Box 579, Kirkland, WA 98033
Telephone number:
(206) 822-8266, Extension 224

THE NORTHWESTERNER (USPS 598-860)

Entered as Second Class
Matter, Kirkland, WA.
Published 8 times a year,
Dec.-Jan., Feb., March,
April-May, June-July,
Aug.-Sept., Oct., and
Nov., by Northwest College,
11102 NE 53rd St.,
P.O. Box 579,
Kirkland, WA 98033

March 1984
Volume XVIII, No. 3

ADDRESS CORRECTION REQUESTED

POSTMASTER: Send Address Changes To:
P.O. Box 579, Kirkland, WA 98033