

Take **two minutes** and read Romans 2:7.

(We'll even look it up for you):

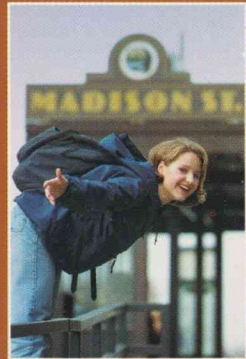
“To those who by persistence in doing good
seek **glory, honor** and **immortality**,

He will give eternal life.”

Think about it. You were just going to settle
for a college? For a career? For a life?

You should **go for it.**

With all the passion, zest, enthusiasm
and commitment you can imagine.



**I grew up in Sequim, Washington, about
a two-hour ferry ride across Puget Sound.**



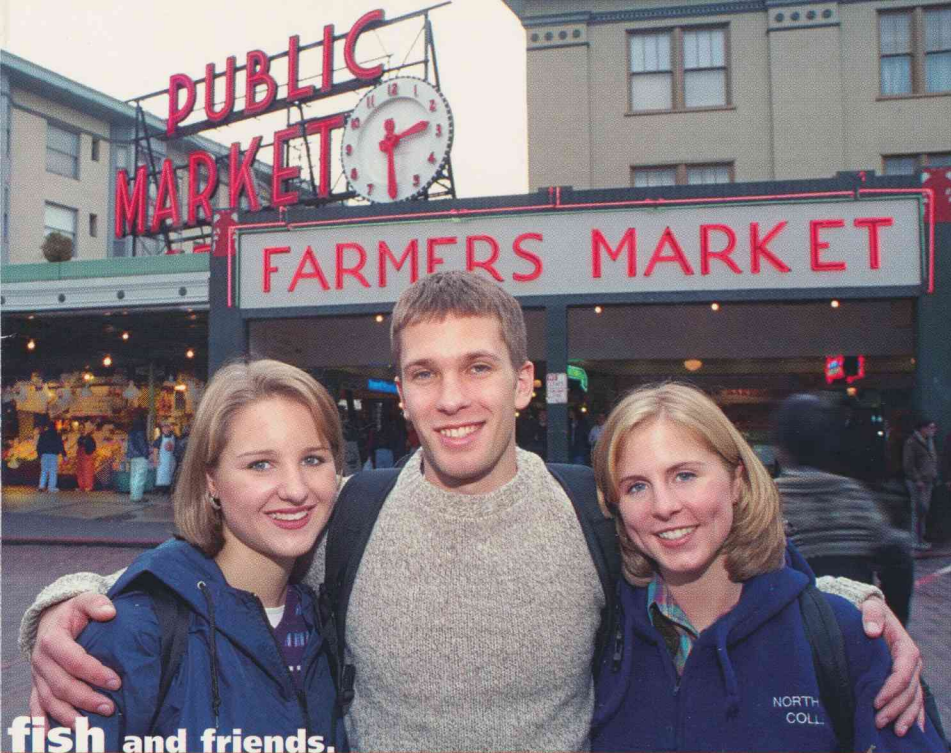
I could have gone to college anywhere.

**But why leave some of the most beautiful country
God ever created?**



Fruit...

At Northwest College, you'll li



fish and friends.

**Pike Place Market in Seattle
is a great place to hang for an afternoon.**



Opportunities to

**I've traveled in a drama team
to Ecuador, been part of inne
and I've been involved in stu**

ve by some of the most spectacu

My famous impression of a salmon. I could always get a job at the Aquarium. Of course, there are lots of other places to work, since Seattle is the headquarters for companies like Microsoft, Boeing, Nordstrom, Nintendo, and Starbucks. That's why 80% of our students find great part-time employment.



minister...

**taken a missions trip
-city outreaches...
ent leadership.**

Northwest College —
*was the best decision for me.
Anyplace else, I would have
felt like a fish out of water. :)*



Why the backpacks? To be cool? No. The academics here are good. Very good. So you need a way to carry all your books.

lar scenery God ever created, in

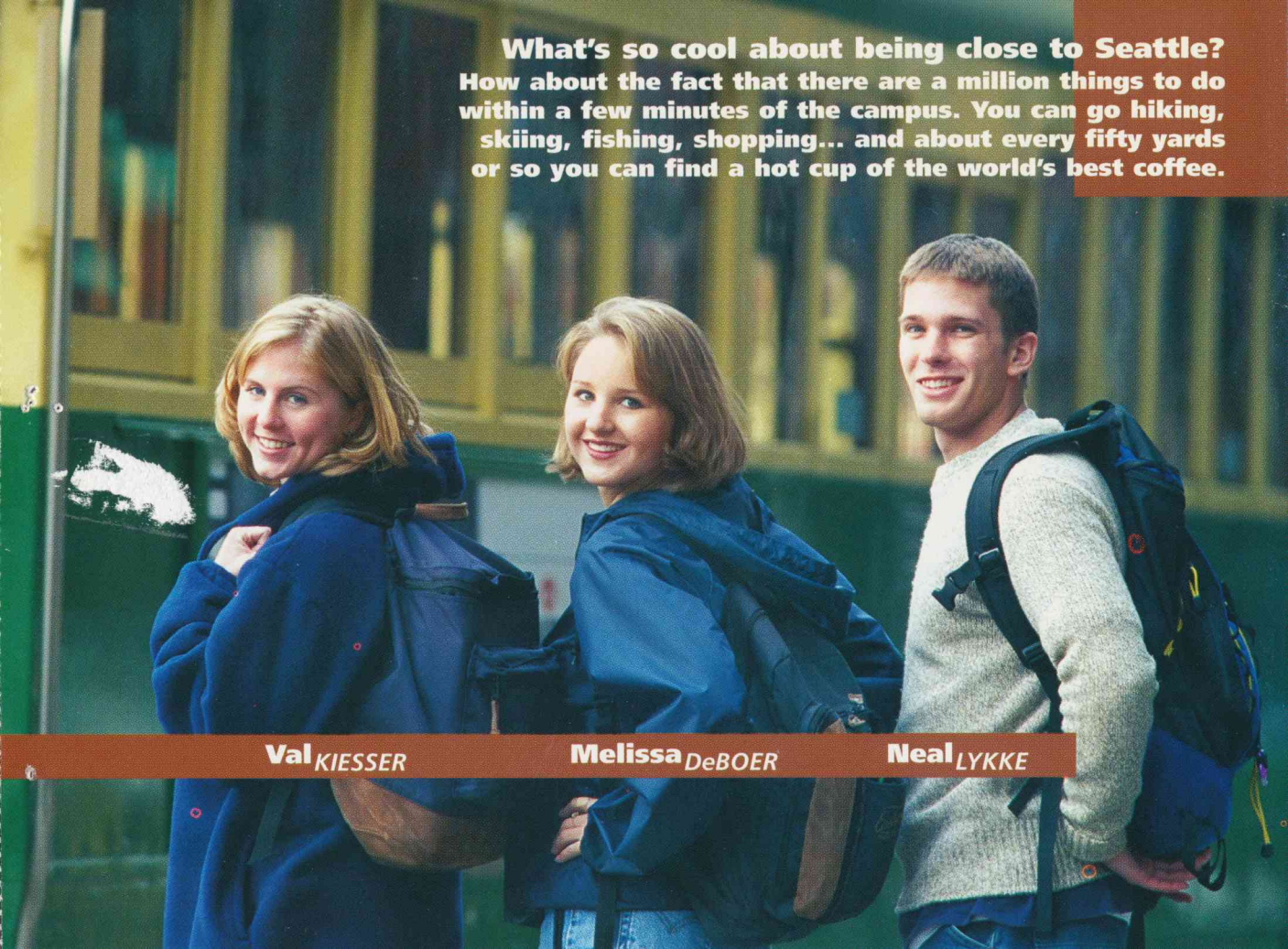


**Val Kiesser
leads a group
of Northwest
students on
a ferry ride to
Bainbridge Island.**

You can go to college anywhere...

But at Northwest College, you can do your learning surrounded by friendly people and beautiful scenery. This is a great place to live... and it's a great place to make friends!

a city filled with opportunity.

A photograph of three students, two women and one man, standing in front of a library. They are all wearing blue jackets and carrying backpacks. The woman on the left is smiling and looking back over her shoulder. The woman in the middle is also smiling and looking back. The man on the right is smiling and looking towards the camera. The background shows bookshelves filled with books.

What's so cool about being close to Seattle?
How about the fact that there are a million things to do within a few minutes of the campus. You can go hiking, skiing, fishing, shopping... and about every fifty yards or so you can find a hot cup of the world's best coffee.

Val KIESSER

Melissa DeBOER

Neal LYKKE

Northwest COLLEGE

5520 108th Avenue NE
PO Box 579
Kirkland WA 98083-0579

800.669.3781
www.nwcollege.edu

inside...
observations
by Val Kiesser,
a senior from
Sequim, Washington

NONPROFIT ORG
U.S. POSTAGE
PAID
SEATTLE, WA
PERMIT NO. 6164