



Pioneers



CONQUERORS



Life Savers



TORCHBEARERS



MESSENGERS



CHALLENGERS

REAPERS



BUILDERS

... are white ready to harvest





☆ *Northwest Bible Institute*

A School for the Training of Ministers, Missionaries, and Christian Workers
Owned by and Operated Under the Supervision of the Northwest District Council of the
Assemblies of God

E. 69th and 8th Ave. N. E.
SEATTLE 5, WASHINGTON ☆

☆ *A Day at School*



. . . The beginning of another day finds teachers and students gathering from along the shores of beautiful Green Lake (five blocks from school), and from the north, south, and east to begin another day of prayer, study, and fellowship.

☆ *Entrance*



"Study to shew thyself approved unto God, a workman that needeth not to be ashamed, rightly dividing the word of truth." II Tim. 2:15.

A Day

2 Hearken unto the cry, my King, and my God: for
unto thee will I pray.
3 My voice shalt thou hear in the
morning, O LORD; in the morning
will I direct my prayer unto thee,
and will look up.
4 For there is not a God that hath
pleasure in wickedness: neither
shall thou dwell with thee.
5 Therefore shall all not stand in
the day of wrath: they shall
test all workers
destroy them that
the LORD will

7 Heb. which
serve in
Ps. 27.
8 Ps. 25.
11.
9 Or, stead
ness.
10 Heb. in
mouth, t
is, in the
mouth of
any of the
10 Heb.
wicked-
nesses.
11 Luke 11.
Rom. 3. 18
12 Ps. 62. 4.
13 Or, Make
them guilty
in 2 Sam. 1.
31: 17. 14. 22
12 Or, from

7:00 A. M.

PRIVATE DEVOTIONS

we begin our day . . .



8:00 A. M.

MORNING WORSHIP

United in song, praise,
and prayer . . .



8:30 A. M.

FRESHMAN CLASS

A group of our first
year students . . .



8:30 A. M.

JUNIOR CLASS

We enjoy a lecture in the
Junior classroom . . .

at School

8:30 A. M.

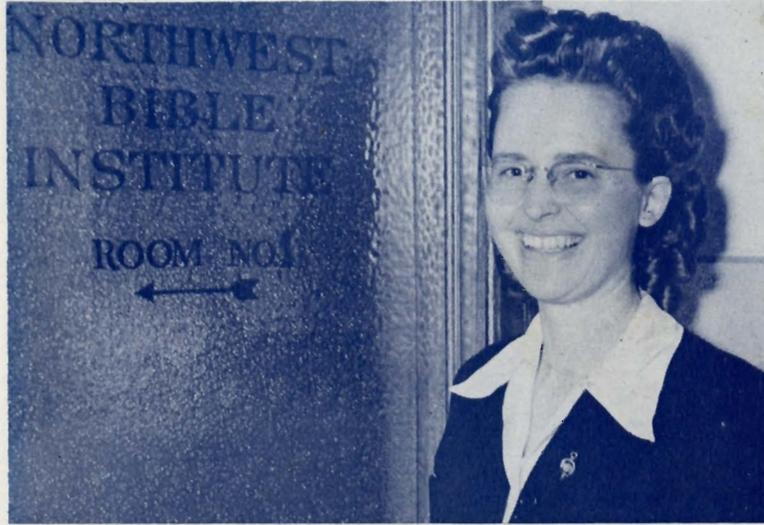
SENIOR CLASS

Another Hermeneutics period
with Rev. Bronson . . .



OUR REGISTRAR

Weekly practical work
assignments to out-stations,
missions, hospitals, and
local churches . . .



10:00 A. M.

RECESS

A time of relaxation and
fellowship . . .



MAIN OFFICE

School routine and business
capably managed by an
efficient office force . . .



A Day



10:20 A. M.

MISSIONARY LECTURE

Practical missionary principles and language study are taught . . .



11:00 A. M.

YOUTH EVANGELISM

Instruction in the use of flannel board in winning the youth for Christ . . .



12:30 A. M.

LUNCH

We pause for a time of refreshment . . .



1:15 P. M.

MISSIONARY BANDS

By prayer and a study of the great need, we receive a clear missionary vision . . .

at School

2:00 P. M.

CHOIR PRACTICE

. . . sing unto Him a new song . . .



6:45 P. M.

ASSIGNMENTS

Another opportunity to witness for the Master to those who have not yet accepted Jesus Christ . . .



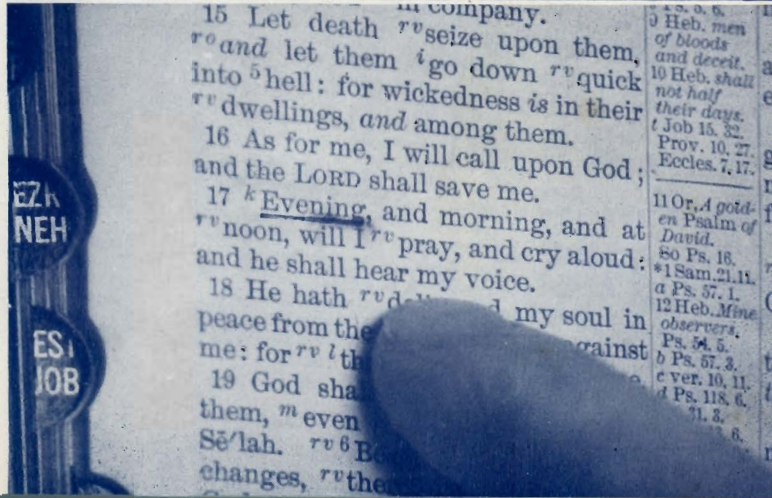
7:45 P. M.

STUDENT SERVICE

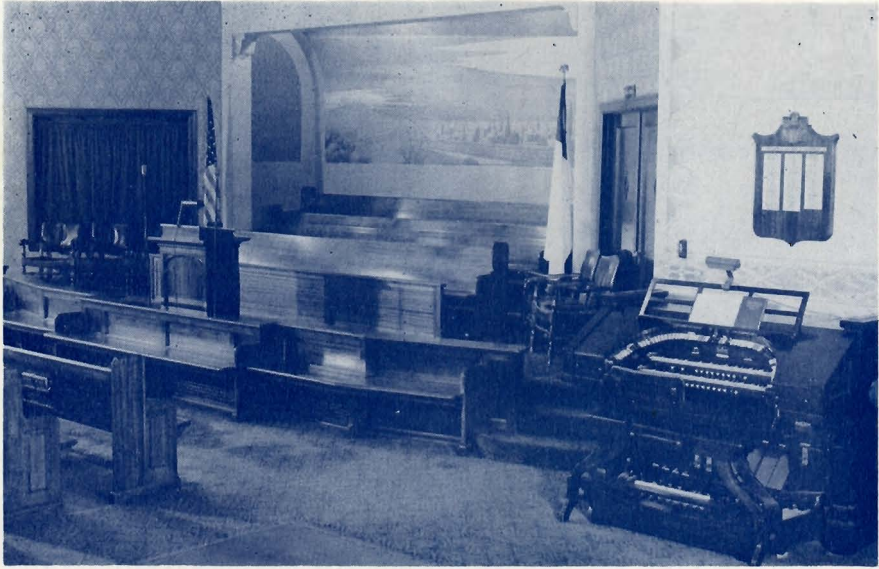
Once again we enjoy the presence of God as we gather together to worship Him . . .



With praise we look to God in thanksgiving for His guidance through another day at school . . .



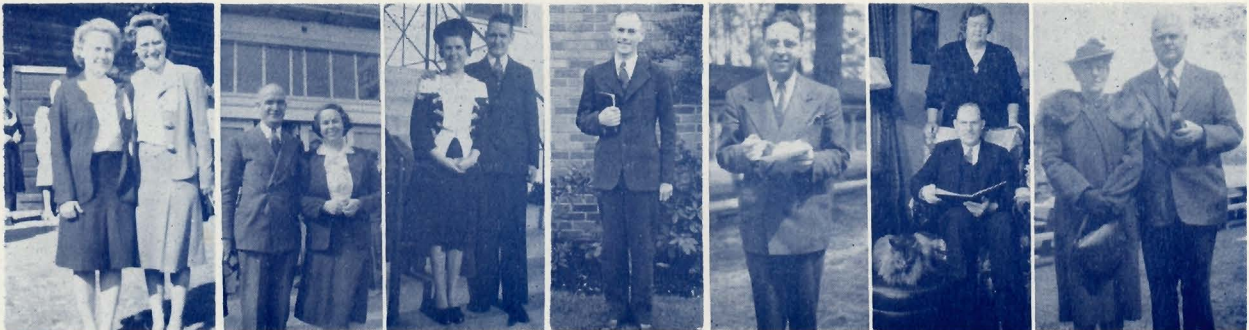
Chapel



Spiritual Life

A high spiritual atmosphere is maintained throughout the Institute, and the life of the school has been marked by many outpourings of the Spirit of God. The first period of each morning is devoted to prayer, and at noon a chapel service is conducted by the students. A part of each Friday afternoon is devoted to prayer for the mission fields by the various Missionary Bands. Correspondence is carried on with the missionaries on the field and special requests are thus brought before the prayer bands.

☆ All classes in the school are opened with prayer, and in many instances the power of God is so manifested that the entire period is devoted to praise and worship. Glorious spiritual victories are won during these seasons of devotion.



P
R
I
N
C
I
P
A
L



REV. HENRY H. NESS

Faculty

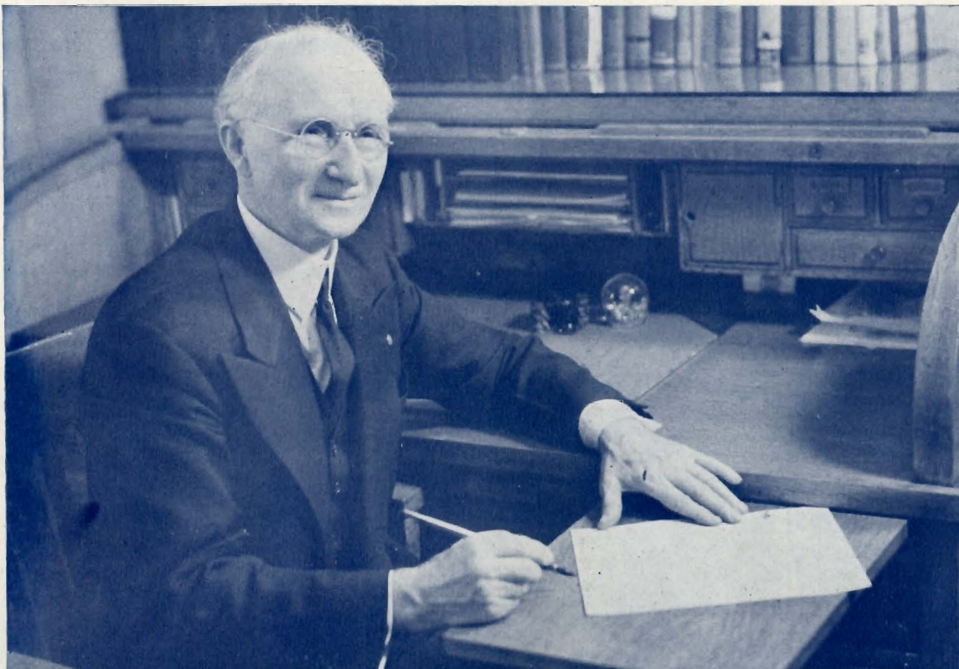
The faculty of the NORTHWEST BIBLE INSTITUTE consists of Spirit-filled, consecrated men and women, who, by their experience in the ministry, education, personal gifts and talents, are eminently fitted to teach. The faculty always endeavors to maintain the highest possible standard of Christian living among the students, and personal attention is given to every student.

BOARD OF DIRECTORS

REV. FRANK GRAY, Chairman
REV. R. F. ASHWORTH
REV. J. A. BOGUE
REV. W. H. BOYLES

REV. C. E. BUTTERFIELD
REV. J. J. CLEMENT
REV. R. E. MADER

REV. J. S. MANCHESTER
REV. A. R. MATTSON
REV. H. H. NESS
REV. F. W. RIDOUT



D
E
A
N

REV. C. C. BEATTY

PURPOSE . . .

Development of genuine Christian character and preparation for Christian service, by the promotion of a more thorough knowledge of God's Word. For those who have been called of God to enter the active ministry, and for others who feel their need of Bible knowledge and instruction, the Institute provides a practical course of instruction and training of ministers, missionaries, and Christian Workers, in an atmosphere conducive to the study and meditation upon God's Word.

The Northwest Bible Institute embraces as its teaching the fundamental doctrines of the Bible as outlined by the General Council of the Assemblies of God.

HISTORY . . .

Realizing the great need of training Christian young men and women so vitally needed in the service of the Lord, the Northwest Bible Institute was opened on October 1, 1934, as an official institution of the Northwest District Council of the Assemblies of God. The enrollment of the school has increased yearly, with a total of over 300 students this past year. Each year has been marked with continued spirituality, and God has marvelously blessed the study of His Word. To the first graduating class, the PIONEERS, have been added in successive years, the CONQUERORS, the LIFESAVERS, the TORCHBEARERS, the BUILDERS, the MESSENGERS, the CHALLENGERS, the REAPERS, and the WATCHMEN.

LOCATION . . .

The Northwest Bible Institute is located near beautiful Green Lake in the residential north-east section of Seattle. The quiet atmosphere and pleasant surroundings make it ideal from both the spiritual and natural standpoint. Seattle's many parks, museums, and scenic centers offer varied opportunities for wholesome recreation. Nearby shopping districts and its proximity to transit systems provide excellent positions in many fields of labor. The University of Washington and other prominent colleges are located in Seattle where students may take special work apart from that which is offered by this Institute.

Seattle is a city of unusual beauty, covering seven hills overlooking three large lakes. Here are some interesting facts that make Seattle an ideal place to visit and a still more wonderful place in which to live: Altitude—Sea level to an elevation of 450 feet. Health—One of America's healthiest cities; birth rate averages 17.65 per thousand population; death rate 9.75 per thousand people annually for the past fifteen years. Climate—It has a climate which is as near ideal as can be found anywhere. The average winter temperature is 41 degrees above zero, and the average summer temperature is 62 degrees. Rainfall—Seattle's average annual rainfall is 33 inches, which is less than that of Cleveland, St. Louis, Kansas City, Cincinnati, Philadelphia, Indianapolis, Boston, Washington, D. C., New York City, Little Rock, Ark., Atlanta and New Orleans. Population—The city's cosmopolitan area of 53.7 square miles embraces a population of 508,700. Seattle is the largest city of its age in the world.



General Information

SCHOOL FEES

Cost of the regular course per year, including notes, books, registration, tuition, library fee, and personal service is \$65.00. (This does not include board, room and laundry). Of this amount, \$35.00 must be paid when the student enters school.

REQUIREMENTS FOR ADMITTANCE

Requirements for admittance to the NORTHWEST INSTITUTE are as follows: a vital experience of Salvation; sound bodily health; age 18 years or older; assurance of compliance in full with all the rules and regulations of the Institution. Every question on the application blank **MUST** be answered.

EXAMINATIONS, REPORT CARDS, CERTIFICATES, DIPLOMAS, SPECIAL HONORS

Examinations are given from time to time during the school year and are compulsory for all students.

A careful record is kept of the subjects and scholastic marks of each student. Report cards are issued to students at the end of each term.

Certificates of promotion are given at the close of each year to students who have completed the year's work.

After a successful conclusion of three years of studies a diploma will be granted upon graduation.

Students who have averaged 95 for three years will be placed on the Honor Roll. Students who have maintained an average of 99 for three years will be given a special honor certificate as well as the special honor award, a gold key for the men and a gold pin for the women.

HOUSING ACCOMMODATIONS

The Institute owns four large houses which have been converted into men's and women's dormitories. These are conducted on a co-operative basis.

In view of the moderate charge for board and room, each student living in the dormitory is required to contribute a portion of time each day as his share towards maintenance.

EMPLOYMENT

The Institute assists in finding part-time employment in private homes for the young women students desiring such work, where they are given board and room, and compensation. In this way, many are able to work their way through school.

The Dean of Women in the Institute renders every reasonable service in assisting the students in securing employment.

Men students are able to obtain most any type of part-time employment.



MRS. GILES, Dean of Women

GOVERNMENT RECOGNITION

The Northwest Bible Institute is duly approved by Government Departments—The Department of Labor (foreign students may obtain a students' "visa" and are permitted to take employment), the Headquarters of Selective Service System (whereby students duly enrolled with this Institute for the purpose of training for the ministry are granted 4-D classification from their draft board), and approved as an Educational Institution for education or training under Veterans Readjustment Act, Public 346, 78th Congress (G. I. Bill).

Courses

- ACTS . . . A detailed study of the book of Acts, dealing with the history of the early Christian Church, and its origin and activity in spreading the Gospel. —Rev. E. V. Bronson.
- BIBLE ATLAS . . . A study of Biblical geography including the drawing of corresponding maps. —Rev. E. V. Bronson.
- CHILD-YOUTH EVANGELISM . . . A study of methods of teaching the child and how to present to them the Gospel, and how to deal effectively with young people to win them to Christ. —Mrs. R. A. Busby.
- CHRISTIAN EVIDENCES . . . Provides an abundance of clear proof why Christianity is more than a mere religion, and is, in truth, the only way of salvation. Deals with the Divine authorship of the Bible and the Deity of Jesus Christ. —Rev. A. S. Ellis.
- CHURCH HISTORY . . . A course covering the history of the Christian Church since the days of the Apostles, and dealing with the Church's heroes and martyrs, the dark ages, and the reformation. —Rev. A. S. Ellis.
- COVENANTS . . . A comparative study of the Old and New Covenants, and God's dealings with His people. —Rev. H. H. Ness.
- DISPENSATIONAL STUDIES . . . God's dealing with mankind in various periods of Biblical history, and a detailed study of "God's Plan of the Ages." —Rev. A. S. Ellis.
- EFFECTIVE SPEAKING . . . Training the student in the art of clear and forceful speech from the standpoint of voice, bodily gesture, and organized thought. The delivery of original speeches is required. —Prof. D. L. Cox.
- ENGLISH . . . The Bible cannot be properly studied nor correctly interpreted and expounded without a thorough understanding of English. For the prospective missionary this course is essential as a foundation for the study of foreign languages. —Prof. D. L. Cox.
- EPISTLES . . . Analyzing of the General and Pauline Epistles written to the early church. —Rev. J. J. Clement.
- HISTORY OF MISSIONS . . . The origin and development of foreign missions, with studies of famous missionaries down through the years. —Rev. E. V. Bronson.
- HERMENEUTICS . . . A course in the science of interpretation and explanation of the Scriptures. —Rev. E. V. Bronson.
- HOMILETICS . . . The sermon, its preparation, and delivery. Opportunity is given for the student to present his sermon before the class. —Rev. E. V. Bronson.
- HYGIENICS . . . A practical course in first aid, personal hygiene, practical nursing, and tropical diseases. —Mrs. H. Giles.
- MINISTERIAL ETHICS AND ETIQUETTE . . . Ethical practices in the life of the minister. —Rev. H. H. Ness.

of Study

MUSIC . . . Music fundamentals, the names of the lines and spaces, scales, counting, syllables, the application to hymns and church music, and conducting. —Prof. D. L. Cox.

NEW TESTAMENT SYNTHESIS . . . A study of the Gospels, including the life of Christ. —Rev. A. S. Ellis.

OLD TESTAMENT SYNTHESIS . . . The presenting of human history beginning with Genesis, and including the study of the important Old Testament characters. —Rev. J. J. Clement.

PARLIAMENTARY LAW . . . A most practical study of the parliamentary procedure necessary in the conducting of business meetings in the church. —Rev. A. S. Ellis.

PASTORAL THEOLOGY . . . Practical studies regarding the duties, activities, and problems of the pastor. —Rev. E. V. Bronson.

PERSONAL EVANGELISM . . . A study involving the worker's need of contacting God and methods to be followed in winning souls for Christ. —Rev. A. S. Ellis.

PNEUMATOLOGY . . . A study in the theology of manifestations and gifts of the Holy Spirit. —Rev. H. H. Ness.

POLEMICS . . . A study which will equip the personal worker to deal intelligently with those who have become ensnared with false religious systems and to prepare the pastor to protect his flock therefrom. —Rev. A. S. Ellis.

PRACTICAL LANGUAGE STUDY PRINCIPLES . . . A study regarding correct methods to be used in learning a new language. —Rev. J. J. Clement.

PRACTICAL MISSIONARY PRINCIPLES . . . The prospective missionary and his preparation for the foreign field. —Rev. J. J. Clement.

PROPHECY . . . Concerning Israel and the surrounding nations; fulfilled prophecies pertaining to Christ and those soon to come to pass; and an outline of the book of Revelation. —Rev. A. S. Ellis.

SPECIAL LECTURES . . . This course includes studies in Church Government, Divine Healing, Pioneer Work, Etc. —Rev. H. H. Ness.

SUNDAY SCHOOL ORGANIZATION . . . Presenting the organization, management, and maintenance of the Sunday School. —Rev. E. V. Bronson.

SYSTEMATIC THEOLOGY . . . A course covering the fundamental doctrines of the Bible, dealing separately with each in a careful and inspiring study. —Rev. E. V. Bronson.

THEOLOGY OF BAPTISMS . . . Scriptural teaching concerning the significance of Christian Baptisms. —Rev. H. H. Ness.

TYPOLOGY . . . A foreshadowing of Christ and the Church in types, forms, and ceremonies as given in the Old Testament. —Rev. E. V. Bronson.



A. Ackerman L. Ackerman V. Adolph G. Aldrich R. Ammon C. Anderson E. Anderson E. Ashworth E. Atwood E. Ausin V. Badten V. Badten



W. Bjur W. Bogart E. Bonner E. Borden E. Boring D. Brandow A. Brooks M. Brougber E. Brown W. Brown M. Brueggemann D. Buell



L. Cook N. Cook E. Courtney J. Covey M. Crowell E. Crouch C. DeMars T. DeVries B. Dalan Z. Dalton V. Denney J. Dickinson



D. Falconer G. Falconer G. Falconer F. Fetcho J. Filardo T. Fischer T. Fiss L. Ford R. French H. Frois L. Furgason A. Gaub



M. Hale W. Hanawalt A. Hanson L. Hanson B. Hawks E. Helm L. Helnick M. Henderson



M. Hint E. Huntington M. Hutchcroft V. Howe C. Iceogle R. Iverson A. Johnson J. Johnson



M. Kiesser A. Kilmer A. Kinsey V. Koch C. Koeth J. Korth M. Kosanke M. Kunz



D. Jaonier F. Lundquist E. McLough H. McLeran B. McLeran G. McMillan E. McNatt W. Malvany



E. Millard I. Millard I. Miller M. Miller W. Miller J. Modahl L. Munges J. Munson D. Mussell G. Nash G. Neeley D. Nelson



A. Peters F. Peters M. Peterson L. Phillips J. Phillips G. Purier I. Postors K. Pitter V. Jotter R. Pressell D. Rank B. Ray



M. Sell P. Sieg D. Simmer L. Shamp H. Shalto H. Snotland R. Stanford M. Stickman A. Stone M. Storer I. Storzow K. Sover



D. Tomlin L. Torgerson J. Turner P. Tutmarc W. Hies K. U'Ren R. Varca Y. Elbauer E. Wagenman J. Wagner J. Walsh R. Weaver



Rev. H. H. Ness

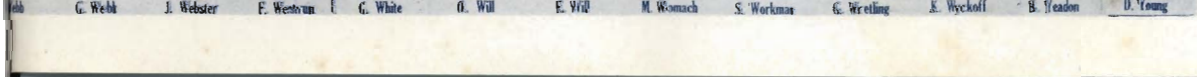
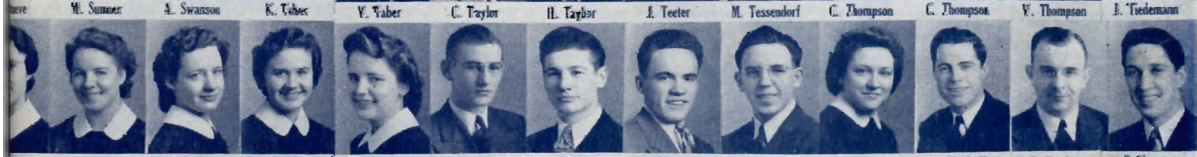
Rev. E. V. Bronson

Prof. D. L. Cox

Beryl Busby

4

FA



Rev. C. C. Beatty



Helen Giles



Dorothy Sozanshen



Rev. E. J. Clement

45

FACULTY

S. Ellis

W. ...

W. ...

W. ...

W. ...

Curriculum Outline

FIRST YEAR

SUBJECT:	Hours Weekly
New Testament Synthesis	4
Old Testament Synthesis	4
Systematic Theology I	1
Covenants	1
Christian Evidences	2
Personal Evangelism	1
Effective Speaking I	1
Church History I	1
English I	1
Music I	1
Hygienics I	1
Practical Work	1
Child-Youth Evangelism	1
Practical Missionary Principles	1
Practical Language Study Principles	1

SECOND YEAR

Systematic Theology II	2
Epistles II	2
Prophecy	2
Church History II	1
Dispensations	2
Typology	2
Polemics	1
Homiletics II	1
Effective Speaking II	1
English II	2
Music II	1
Hygienics II	1
Acts	1
Theology of Baptisms	2
Pneumatology	1
Child-Youth Evangelism II	1

THIRD YEAR

Systematic Theology III	2
Epistles II	2
Pastoral Theology	2
History of Missions	1
Sunday School Organization	1
Homiletics II	1
Public Speaking	1
English III	2
Music III	1
Parliamentary Law	1
Hygienics III	1
Senior Girls' Hygiene	1
Ministerial Ethics and Etiquette	1
Revelation	2
Bible Atlas	1
Divine Healing, Church, Government, Pioneer Work, Etc.	1
Hermeneutics	1
Child-Youth Evangelism III	1



REV. GRAY

Rev. Frank Gray is the Chairman of the Board of Directors of the Northwest Bible Institute. Rev. Gray has at heart the spiritual welfare of young men and women, and especially those who feel a definite call to the ministry.

☆ Rev. Gray stands ever ready to help those who are contemplating entering the ministry not only while attending the institute, but also after they have entered the ministry and are on the field.

"Knowledge shall be increased." This sign of the times is fulfilled around us today in the natural, unregenerate world from which we seek to win converts. We are understanding, "but in understanding be men."

☆ How can we better obey this command and be better equipped to work among an educated public than by going aside to study God's word and giving ourselves unreservedly for a number of years to improving our own knowledge and understanding?

☆ To this end our Bible Institutes have been established and are functioning. They offer prospective Christian workers complete training and thorough preparation for effective Christian work. We advise and urge our consecrated young people to take advantage of these schools which have been provided for them.



REV. RIGGS

RALPH M. RIGGS,

Assistant General Superintendent, General Council of the Assemblies of God.



REV. PERKIN

The outstanding need in every country as far as gospel work is concerned is for young men and women taught in the Scriptures and filled with the Spirit to proclaim the Word to their own nation. It is to this end that one of the first things our missionaries seek to establish is some form of Bible school in the respective countries.

☆ A Bible school graduate thus has an excellent background for helping to train others, and such instruction as is received in a Bible School course is practically essential for missionary work.

NOEL PERKIN,

Missionary Secretary of the General Council of the Assemblies of God.

Certificate of Endorsement



The General Council of The Assemblies of God
336 West Pacific Street Springfield, Missouri

This is to Certify that the

Northwest Bible Institute

located at

Seattle, Washington

having met the requirements for endorsement as set forth in the
Bylaws of the General Council of the Assemblies of God,
is hereby officially recognized and endorsed as an accredited

Theological School

of the Assemblies of God

For the School Year 1944-1945

Given at Springfield, Missouri, this Seventh day of
September, 1944



Ernest Williams
General Superintendent

Rowell Flower
General Secretary

Paul Spang
Educational Secretary

☆ *Our 1945 Addition to the Alumni*



N. B. I. ALUMNI ASSOCIATION

Former students and graduates of the Northwest Bible Institute constitute a fellowship known as the Alumni Association.

☆ The "ALUMNI NEWS," which is published twice yearly, stimulates the spirit of fellowship among the Alumni, serving as a medium through which members of the Association may keep in contact with one another.



With

On

A
L
A
S
K
A



AMERICAN
INDIANS



K
E
N
T
U
C
K
Y
M
T
S.

P
H
I
L
I
P
P
I
N
E
S



Our Alumni

The

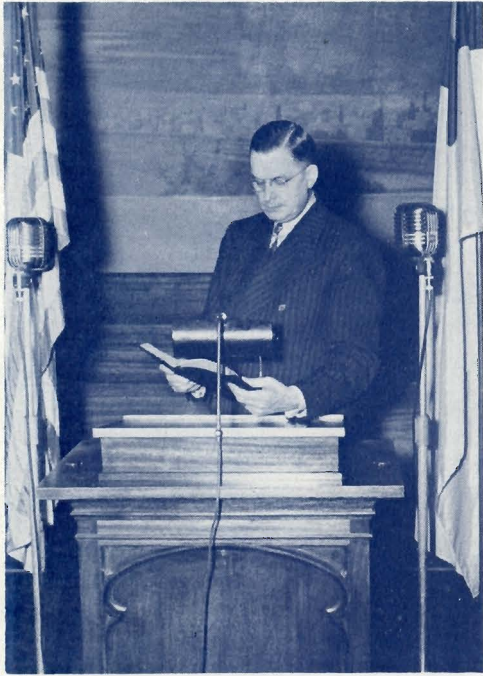
Missionary Field

... "Go ye into all the world
and preach the gospel to every
creature." Mark 16:15

SOUTH AMERICA

CENTRAL AMERICA





REV. NESS

Radio Ministry

Radio broadcasting is being conducted under the direction of Rev. Henry H. Ness, the Principal, each morning 7:30 until 8:00 from the Main Auditorium of the Institute over Station KRSC. This presents a wonderful opportunity for students to acquire experience in the conducting of radio broadcasting.



PROF. COX AT THE CONSOLE OF THE KIMBALL PIPE ORGAN



☆ *Institute Choir and Orchestra*



The Choir and Orchestra, under the direction of Professor Delbert L. Cox, are two departments of the Institute which offer special instruction to those with musical talent. Choir and Orchestra, however, are not required.



Student Body 1944-1945

SENIORS



DEAN YOUNG, President, Anacortes, Washington
KEITH NICHOLS, Vice-President, Ontario, Oregon
IRMA OHLUND, Secretary-Treasurer, Port Orchard, Washington

Ackerman, Arlene, Portland, Oregon
Badten, Vernon, Withrow, Washington
Bahnsen, Alfred, Salem, Oregon
Bassett, Helen, Camas, Washington
Bogart, Winifred, St. Andrews, Washington
Boring, Ethel, Gooding, Idaho
Brown, Elbert, Seattle, Washington
Brueggemann, Martha, Boise, Idaho
Buckley, Phyllis, Hoquiam, Washington
Bye, Helen, Greenacres, Washington
Chesnut, Arthur, Bow, Washington
Chrisman, Roy, Arlington, Washington
Cochran, Birdie, Olympia, Washington
DeMars, Carlos, Seattle, Washington
Driver, Betty, Waterville, Washington
Falconer, Goldie, Grandview, Washington
Ford, Leonard, Seattle, Washington
Freze, Ruth, Miles City, Montana
Fross, Helen, Moses Lake, Washington
Hanson, Alfred, Packwood, Washington
Hanson, Lillian, Toppenish, Washington
Hahn, Dorothy, St. Andrews, Washington
Hill, Marie, Moses Lake, Washington
Hunt, Martha, Deer Park, Washington
Hutchcroft, Marion, Prosser, Washington
Huwe, Viola, Lansford, North Dakota
Johnson, Arthur, Great Falls, Montana
Johnson, Louise, Ryderwood, Washington
Johnston, Betty, Granger, Washington
Jorstad, Floyd, Monroe, Washington
Juarez, Joseph, Granger, Washington
Kenney, Auldy, Forks, Washington
Kilmer, Nellie, Forks, Washington

Korth, Clara, Seattle, Washington
McMillan, Georgia, La Grande, Oregon
Maser, Edward, Everett, Washington
Maxwell, Paula, Seattle, Washington
Mayfield, James, Thermopolis, Wyoming
Millard, Evelyn, Brush Prairie, Washington
Millard, Levi, Brush Prairie, Washington
Munson, Jean, Conrad, Montana
Nash, Clayton, Great Falls, Montana
Peters, Algot, Portland, Oregon
Peters, Fred, Portland, Oregon
Peterson, Melvin, Tacoma, Washington
Phillips, Colleen, Portland, Oregon
Porter, Gladys, Ridge, Montana
Presnell, Ruby, Longview, Washington
Ray, Anna, Edmonds, Washington
Richards, Harold, Yakima, Washington
Ruthford, Douglas, Seattle, Washington
Sala, Bonnie, Spokane, Washington
Seale, Herbert, Midway, Texas
Seat, Leona, Port Angeles, Washington
Shamp, Lionel, Bucoda, Washington
Stanford, Richard, Deferiet, New York
Stickelman, Mary, Gig Harbor, Washington
Sumner, Martin, Seattle, Washington
Tessendorf, Myron, Vancouver, Washington
Tutmarc, Paul, Seattle, Washington
U'Ren, Katharine, Seattle, Washington
White, Genevieve, Juneau, Alaska
Will, Oscar, Seattle, Washington
Workman, Silas, Riffe, Washington
Wyckoff, Keith, Touchet, Washington

Student Body 1944-1945

JUNIORS



LEONARD LANPHEAR, President, Spokane, Washington
DAN SINNER, Vice-President, Wapato, Washington
ANITA BROOKS, Secretary-Treasurer, Hoquiam, Washington

Ackerman, Lucille, Portland, Oregon
Ammon, Ruth, Los Angeles, California
Armstrong, Alyce, Monroe, Washington
Atwood, Eileen, Oak Harbor, Washington
Badten, Vera, Withrow, Washington
Baunggard, Revella, Seattle, Washington
Bethune, Marjorie, Winlock, Washington
Booker, Dorothy, Seattle, Washington
Borden, Ethel, Seattle, Washington
Brougher, Mary, Ketchikan, Alaska
Click, Mervin, Seattle, Washington
Cole, Cleo, Seattle, Washington
Cook, Nellie, Loomis, Washington
Courtney, Emma, Dufur, Oregon
Crouch, Emma, Naches, Washington
Cummings, Frances, Cosmopolis, Washington
Dinstel, Marjorie, Ridge, Montana
Falconer, Dorothy, Grandview, Washington
Gibbons, Donald, Kirkland, Washington
Gillespie, Margaret, Yakima, Washington
Gonser, Virginia, Longview, Washington
Gould, Hazel, Lodi, California
Gould, LaVerne, Seattle, Washington
Greeley, Floyd, Chewelah, Washington
Herboldt, Dave, Caldwell, Idaho
Hill, Reuban, Moses Lake, Washington
Holmquist, Esther, Kalispell, Montana
Hunt, Maxine, Yakima, Washington
Huntington, Evelyn, Seattle, Washington
Janes, Glade, Deer Island, Oregon
Kaul, Richard, Fallon, Montana
Kiesser, Margaret, Cut Bank, Montana
Kinsey, Alice, Sunnyside, Washington
Lee, Beulah, Riffe, Washington
Lindgren, Myron, Selah, Washington

McLeran, Helen, Yakima, Washington
McLeran, Roscoe, Yakima, Washington
McNutt, Ellen, Spokane, Washington
Maguire, Mabel, Chelan, Washington
Marr, Orland, Seattle, Washington
Miller, Irene, Mullan, Idaho
Modahl, Jesse, Milton, Washington
Neeley, Gene, Puyallup, Washington
Nelson, Dorothy, Mullan, Idaho
Olsen, Myrtle, Seattle, Washington
Parker, Glenn, Auburn, Washington
Peretti, Jack, Seattle, Washington
Personeus, Marjory, Bremerton, Washington
Poston, Lucille, Sedro Woolley, Washington
Potter, Richard, Toppenish, Washington
Potter, Vera, Toppenish, Washington
Randall, Dorothy, Wapato, Washington
Ray, Lowell, Madison, Nebraska
Rientjes, Cornelius, Seattle, Washington
Rientjes, Joan, Seattle, Washington
Roth, Marie, Lind, Washington
Schneider, Joyce, Carmangay, Alberta, Canada
Sell, Marjorie, Seattle, Washington
Snortland, Helen, Bellingham, Washington
Taylor, Harlan, Seattle, Washington
Teeter, Joyce, Yakima, Washington
Thompson, Clifford, Vancouver, Washington
Thompson, Violet, Vancouver, Washington
Torgerson, LeRoy, Sedro-Woolley, Washington
Ulin, William, Port Angeles, Washington
Vilhauer, Virginia, Portland, Oregon
Wagner, Jene, St. John, Washington
Webb, Elizabeth, Watertown, South Dakota
Wretling, Geraldine, Homedale, Idaho
Yeadon, Bertram, Seattle, Washington

Student Body 1944-1945

FRESHMEN



EDWIN JORSTAD, President, Monroe, Washington
LLOYD STORMOEN, Vice-President, Minneapolis, Minnesota
RUTH IVERSON, Secretary-Treasurer, Yelm, Washington

Adolph, Viola, Roundup, Montana
Aho, Raymond, Seattle, Washington
Aldrich, Gertrude, Centralia, Washington
Anderson, Cale, Weott, California
Anderson, Edward, Carnation, Washington
Ashworth, Eunice, Yakima, Washington
Austin, Evelyn, Yakima, Washington
Bailey, Phyllis, Vancouver, Washington
Baldwin, Joy, Post Falls, Idaho
Barger, John, Thorhild, Alberta, Canada
Barnes, Lois, Sweet Home, Oregon
Barrett, Joseph, Ryderwood, Washington
Barton, Lorene, Ellensburg, Washington
Batten, Ida, Port Orchard, Washington
Benningfield, James, Vancouver, Washington
Benningfield, Naomi, Vancouver, Washington
Birkeland, Benny, Seattle, Washington
Bixler, Leon, Seattle, Washington
Bjur, Wesley, Ridgefield, Washington
Bonner, Esther, Longview, Washington
Brandow, Dona, Laurel, Nebraska
Brown, Wallis, Touchet, Washington
Buell, Donelda, Toppenish, Washington
Bunn, Dormalee, Salem, Oregon
Cadwell, Grace, Ranch Creek, Montana
Calapp, Quentin, Bothell, Washington
Cameron, Phyllis, Juneau, Alaska
Carlson, Oliver, Bothell, Washington
Carson, Georgia, Poulsbo, Washington
Coe, Betty, Mullan, Idaho
Combs, Dora, Tacoma, Washington
Cook, Leonard, Yelm, Washington
Covey, James, Omak, Washington
Crowell, Mary Louise, Clovis, California
Dalan, Bernice, Yelm, Washington
Dalton, Zeta, Marysville, Washington
Denney, Virginia, Miles City, Montana
DeVries, Ted, Portland, Oregon
Dickinson, James, Bethpage, New York
Dinstel, Eleanor, Ridge, Montana
Dotson, Elisabeth, Elma, Washington
Dudley, Ruth, Post Falls, Idaho
Durych, Mildred, Tacoma, Washington
Dyksterhuis, Grace, Mt. Vernon, Washington
Eldred, Mary, Chehalis, Washington
Eldred, Rose, Chehalis, Washington

Ellis, Marjorie, Los Angeles, California
Emerson, Austa, Marsing, Idaho
Eudaily, Bernadean, Kelso, Washington
Evans, Douglas, Seattle, Washington
Falconer, Gloria, Grandview, Washington
Fetcho, Floreine, Spokane, Washington
Filardo, Joseph, San Jose, California
Fischer, Travis, Alba, Texas
Fiss, Ted, Seattle, Washington
French, Ralph, White Swan, Washington
Furgason, Leona, Anaconda, Montana
Gaub, August, Fallon, Montana
Glover, Jonathan, Bremerton, Washington
Glover, Marjorie, Bremerton, Washington
Goldsmith, Everett, Lyndon, Kansas
Greeley, Bernadine, Chewelah, Washington
Greer, Robert, Weott, California
Grosser, Hazel, Tacoma, Washington
Gunnarson, Lorna Mae, Seattle, Washington
Hamilton, Elwood, Seattle, Washington
Hanawalt, William, Seattle, Washington
Hawks, Betty, Longview, Washington
Helm, Eileen, Centralia, Washington
Helmick, LaVerne, Centralia, Washington
Henderson, Marie, Issaquah, Washington
Holm, Jenny, Poulsbo, Washington
Hoskins, John, Lewiston, Idaho
Hunt, Everett, Kirkland, Washington
Icenogle, Clyde, Seattle, Washington
Johnson, Jean, Juneau, Alaska
Johnson, Marilyn, Seattle, Washington
Koch, Virginia, Dishman, Washington
Korth, John, Seattle, Washington
Kosanke, Marian, Sedro-Woolley, Washington
Kunz, Maudie, Juneau, Alaska
Larson, Verna, Kelso, Washington
Lawrence, Albert, China Grove, North Carolina
Lidstrom, Audrey, Seattle, Washington
Lindgren, Eldo, Selah, Washington
Lindseth, Einar, Cosmopolis, Washington
Little, Betty, Seattle, Washington
Loomis, Dorothy, Mt. Vernon, Washington
Losvar, Viola, Everett, Washington
Lundquist, Fred, Marysville, Washington
McCullough, Eleanore, Wrangell, Alaska
Malvaney, William, Seattle, Washington

Student Body 1944-1945

Markham, LaVelle, Irrigon, Oregon
 Mayrand, Shirley, Poulsbo, Washington
 Messer, Maxine, Wallace, Idaho
 Milam, Paul, Bothell, Washington
 Miller, Robert, Yakima, Washington
 Moores, Lucille, Grand Junction, Colorado
 Munger, Lorraine, Seattle, Washington
 Mussell, David, Payette, Idaho
 Newlun, Albert, Spokane, Washington
 Nickel, Paul, Snohomish, Washington
 Nowowiejski, Warren, Monmouth, Oregon
 Oberg, Lawrence, Seattle, Washington
 Oliver, Lyle, Wapato, Washington
 Olp, Gene, Malone, Washington
 Olsen, Lorraine, Deer Island, Oregon
 Pedersen, William, Toppenish, Washington
 Peretti, Gene, Seattle, Washington
 Phillips, John, Bellevue, Washington
 Reep, Beatrice, Detroit, Texas
 Rehard, Margie, Seattle, Washington
 Richards, George, Outlook, Washington
 Robinson, Phyllis, Boise, Idaho
 Roy, Betty, Chehalis, Washington
 Schneider, Franklin, Langley Prairie, British Columbia, Can.
 Shatto, Howard, Omak, Washington

Sieg, Pauline, Hartline, Washington
 Stone, Artie, Yakima, Washington
 Storer, Marie, Quilcene, Washington
 Stover, Kathleen, Bonners Ferry, Idaho
 Stueve, Esther, Stanton, Nebraska
 Swanson, Agnes, New Rockford, North Dakota
 Taber, Kathern, Seattle, Washington
 Taylor, Caroll, Dudley, Idaho
 Thompson, Clara, Coeur d'Alene, Idaho
 Tiedemann, J. R., Seattle, Washington
 Tomlin, Dorothy, Forks, Washington
 Turner, Joyce, Olympia, Washington
 Vance, Grace, Seattle, Washington
 Vance, Rosalie, Jerome, Idaho
 Wagenman, Emma, Toppenish, Washington
 Walsh, Joseph, Bonners Ferry, Idaho
 Weaver, Ray, Alderwood Manor, Washington
 Webb, Genevieve, Grandview, Washington
 Webster, Jean, Mullan, Idaho
 Westrum, Myrtle, Kelso, Washington
 Will, Emil, Seattle, Washington
 Womach, Lillian, Spokane, Washington
 Womach, Merrill, Spokane, Washington
 Wonser, Edwin, Grandview, Washington

SPECIAL STUDENTS

Anderson, Lily, Edmonds, Washington
 Ayers, Anne, Ellensburg, Washington
 Ayers, Claretta, Anaconda, Montana
 Brooks, William, Tacoma, Washington
 Eskesen, Mary, Seattle, Washington
 Fielding, Mrs. Erma, Roseburg, Oregon
 Gaub, Mrs. August, Fallon, Montana
 Greyll, Lillie, Port Orchard, Washington
 Hale, Everett, Seattle, Washington
 Hale, Myrtle, Seattle, Washington
 Hansen, Norman, Chinook, Washington
 Humphries, Mrs. Wilma, Louisville, Kentucky
 Hutchcroft, Vera, Seattle, Washington
 Jackson, Opal, Seattle, Washington
 Jernberg, Donna, Spokane, Washington
 Krosley, Ethel, Seattle, Washington

Larsen, Zola, Seattle, Washington
 Lohr, Corinne, Seattle, Washington
 Lohr, Oscar, Seattle, Washington
 Marsh, Wilfred, Seattle, Washington
 Miller, Mary, Ellensburg, Washington
 Nauditt, Alvin, Prosser, Washington
 Nelson, Frances, Chewelah, Washington
 Orndorff, Sidney, Vallejo, California
 Peterson, Martha, Puyallup, Washington
 Peterson, Paul, Everet, Washington
 Rathjen, Dorothy, Seattle, Washington
 Steffensrud, Eleanor, Seattle, Washington
 Taber, Vernon, Seattle, Washington
 Tague, Eva, Seattle, Washington
 Tigner, Donna, Grandview, Washington
 Weger, Helen, Seattle, Washington

FRIDAY STUDENTS

Askren, Doris, Bothell, Washington
 Carlbom, Mrs. Harold, Tacoma, Washington
 Crane, Edith, Seattle, Washington

Philp, Mrs. Richard, Buckley, Washington
 Riddoch, Jessie, Everett, Washington
 Scott, Mrs. B. G., Everett, Washington



School

Life

