

# The Campus

## BULLETIN

February 9, 1983

*"Therefore come out from them and be separate, says the Lord. Touch no unclean thing, and I will receive you. I will be a Father to you, and you will be my sons and daughters, says the Lord Almighty."*

II Cor. 6:17,18

### DON'T FORGET...

Chapel guests for Monday, Feb. 14th will be Dean and Mary Brown, music that ministers.

### FREE CERAMIC CLASSES:

and a 10% discount on Grunware and Suyalies, also firing to all Northwest College students and families. Schandel's Ceramic

7879 159th Pl. NE  
Redmond, Bus. Trade Center  
(across the street from  
Kentucky Fried Chicken)

Redmond, WA - Phone 881-1719.

### ATTENTION!!!

Evangelism students! This Friday the Evangelism MIG will once again share in an evening of evangelism. (Don't put it off any longer - plan to come out!) 6:30 in the SUB.

### CHILDREN'S MIG...

Will be leaving Guy Perk's lounge today at 3:45 to go to lake shore condominiums for a bible club.

### GUARANTEED STUDENT LOAN APPLICATIONS - 1983-84

GSL applications for the next school year will not be available until mid-March. Notice will go in the student bulletin when they are ready for distribution. Thank you!

### 1983-84 FINANCIAL AID FORMS

Just a reminder that Financial Aid Forms are available for students to apply for financial aid next year. You should plan to apply now if you want aid consideration because funds are there but they are limited, so the early bird gets the worm, so to speak! Thanks!

### 1982-83 GSL LOANS ARE STILL AVAILABLE!

Guaranteed Student Loans are still available for the 1982-83 academic year if you are anticipating the need for some financial aid to help pay off winter quarter and/or spring quarter. Come by the financial aid office for application forms as soon as possible. Thanks!

### SCHOLARSHIP OPPORTUNITIES

1. Black Student Scholarship - \$500 per year given by the General Council of the Assemblies of God to a deserving black student.
2. Elsi Peters Deaf Scholarship - \$250 per year given by the General Council to a deserving student interested in deaf ministry.
3. National Jewish Committee Scholarship \$500 per year given by the General Council to a deserving student interested in ministry to Jews.

See Bev Johnson right away for application forms. Deadline for submission of scholarship applications is February 18, 1983.

### INCOME TAX RETURNS...

Dale Sorensen is available again this year to prepare tax returns. Call for appointments in the evening at 821-8136 or in the Accounting Dept. at 822-8266 (Ext. 281) Reasonable rates.

### CHAPEL...

- MONDAY: Dean and Mary Brown (Music)  
TUESDAY: ASB  
WEDNESDAY: Home Missions/Eugene Born  
 Emphasis Bob Pirtle  
THURSDAY: Home Missions Eugene Born  
 Emphasis-Bob Pirtle  
FRIDAY: WOM - Dave Roever

### SOPHOMORES OR JUNIORS...

who have taken Comm. 121 (Speech) and Bible 203 (Principles of Interp.) are encouraged to take Homiletics I during summer school. It may free up an hour for your fall quarter schedule.

### AWS-AMS

### WORSHIP AND PRAISE NIGHT !!!

(Thursday, February 10th at 7:00 p.m. in the L-Building)

We will have a joint meeting, simply for the purpose of worshiping God and relaxing in His presence. Come and hear Kellie Pace, Radiance, and Praise Song. Come prepared to sing praises to our great God! Leave whenever you want...the atmosphere will be totally casual.

FOR SALE:

1977 Olds Omega in very good condition-  
\$2,000 (negotiable) 827-5646 or 525-7471.

CHAPEL GUEST FRIDAY!

February 11th - Madeline Manning Mims  
Currently holds American record for 800  
meter run, member of four Olympic Teams,  
and named outstanding young women of Amer-  
ica in 1981. With a powerful testimony and  
ministry in music.

COLLEGE CHOIR-

is in need of both Men and Women. We meet  
Tuesdays and Thursdays 2nd period in A-7.  
Beginning February 1st we will be having  
evening rehearsals on Tuesdays and Thursdays  
from 7:00 to 7:45. If you would like to  
help a Senior Graduate contact Richard En-  
gland at 486-3342, 747-7020, or SUB #26.

COLLEGE SNOW RETREAT:

at Camp Kaches Feb. 25-27: Skiing and inner  
tubing available! Theme: Thinking like a  
servant/plus Cornerstone-NW College singing  
group. Cost \$25.00 to \$30.00 not set as of  
this date. More information contact: Lori  
VanBebber - NWC Student or  
Kelley Jones/ Youth Pastor K.F.B. 822-9201

HAVE A HAPPY VALENTINES DAY  
EVERYONE !!!

SUMMER EMPLOYMENT OPPORTUNITIES ARE...

available with the Totem Girl Scout Council.  
Positions and job descriptions are available  
in the Registrar's office. These are paid  
positions. For direct contact: Call Totem  
Girl Scout Council. Judy L. Bittenbender,  
3611 Woodland Park Avenue North, Seattle, WA  
98103. Tel. 633-5600

URGENT! READ IMMEDIATELY!

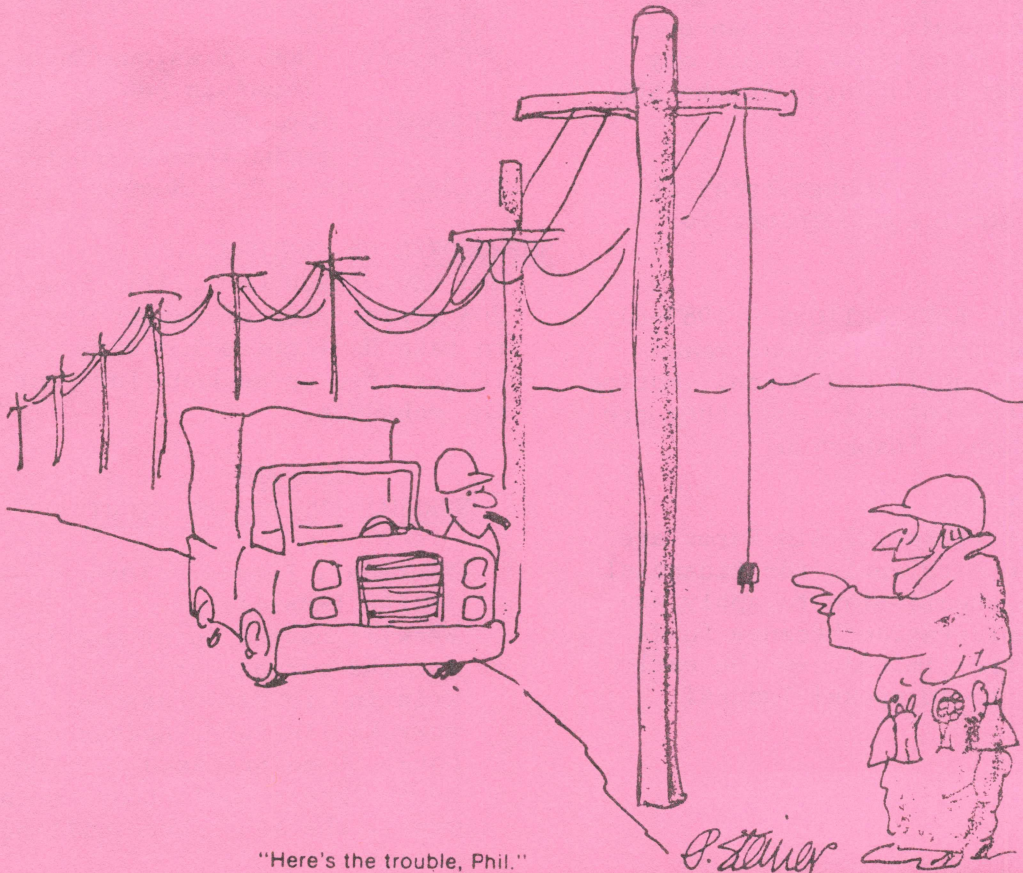
The blue student identification cards are  
required for all library transactions. All  
students should have their cards validated  
at the circulation desk as soon as possible.

SERVICEMEN'S MIG:

That right! We're still around! and we still  
need people to get involved in this vital  
ministry to servicemen at Fort Lewis. We meet  
in the SUB at 5:30 p.m. every Saturday for  
prayer and then leave at 6:00p.m. We get  
back around 11:00 p.m. Come and get involved  
and minister at Genesis II Coffee House, Fort  
Lewis!

"CHRISTIANITY TODAY" ARTICLE FEATURES ASSEMBLIES  
OF GOD - SPRINGFIELD MO.

"Church watchers may have suspected as much,  
but two new statistical studies make it clear:  
the fastest growing denomination in America  
is the Assemblies of God (A/G)." With this  
statement Dean Merrill begins an article in  
the January 7, 1983, edition of Christianity  
Today entitled "The Fastest Growing American  
Denomination."



"Here's the trouble, Phil."