



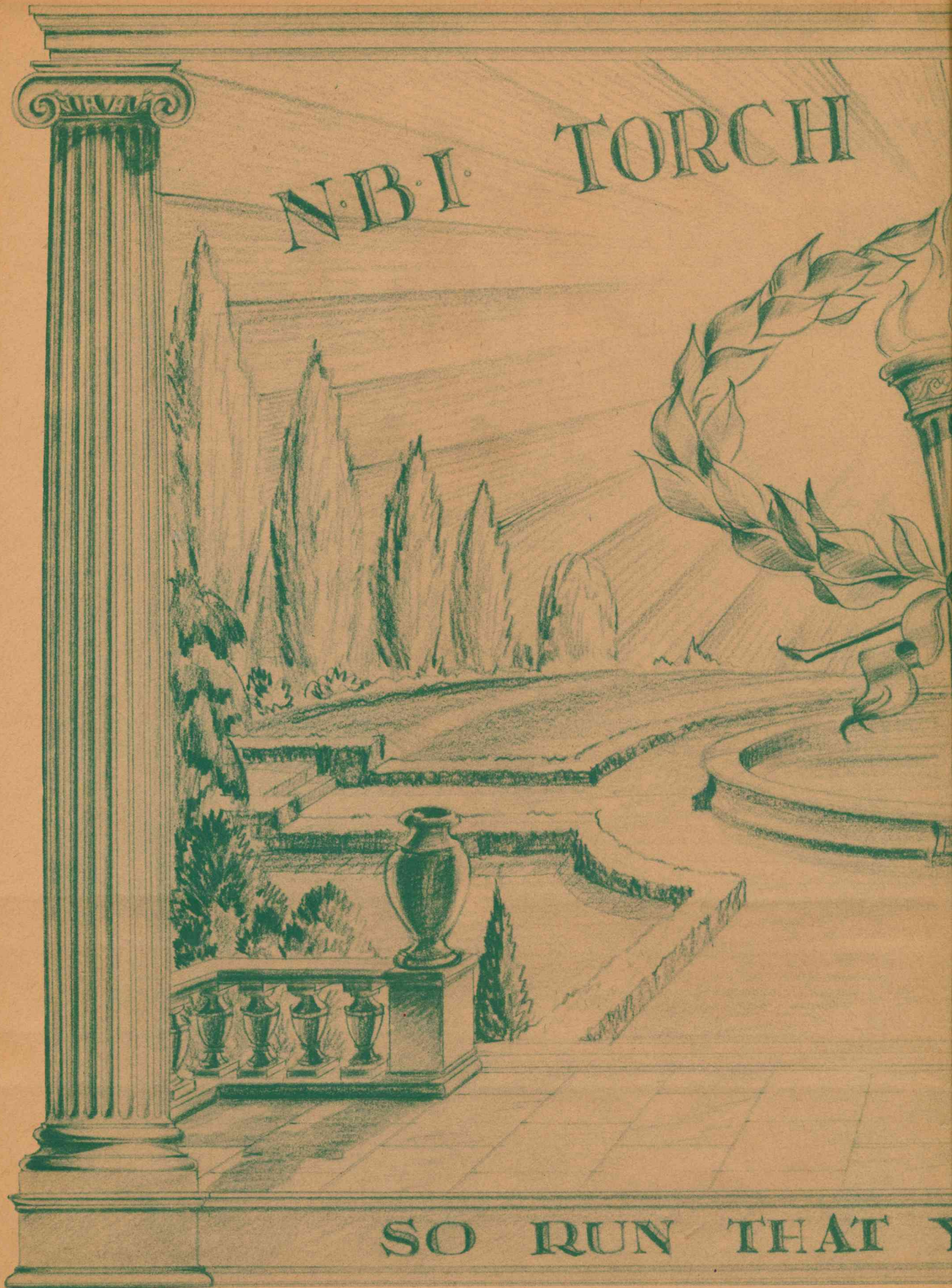
TORCHBEARERS

N·B·I·



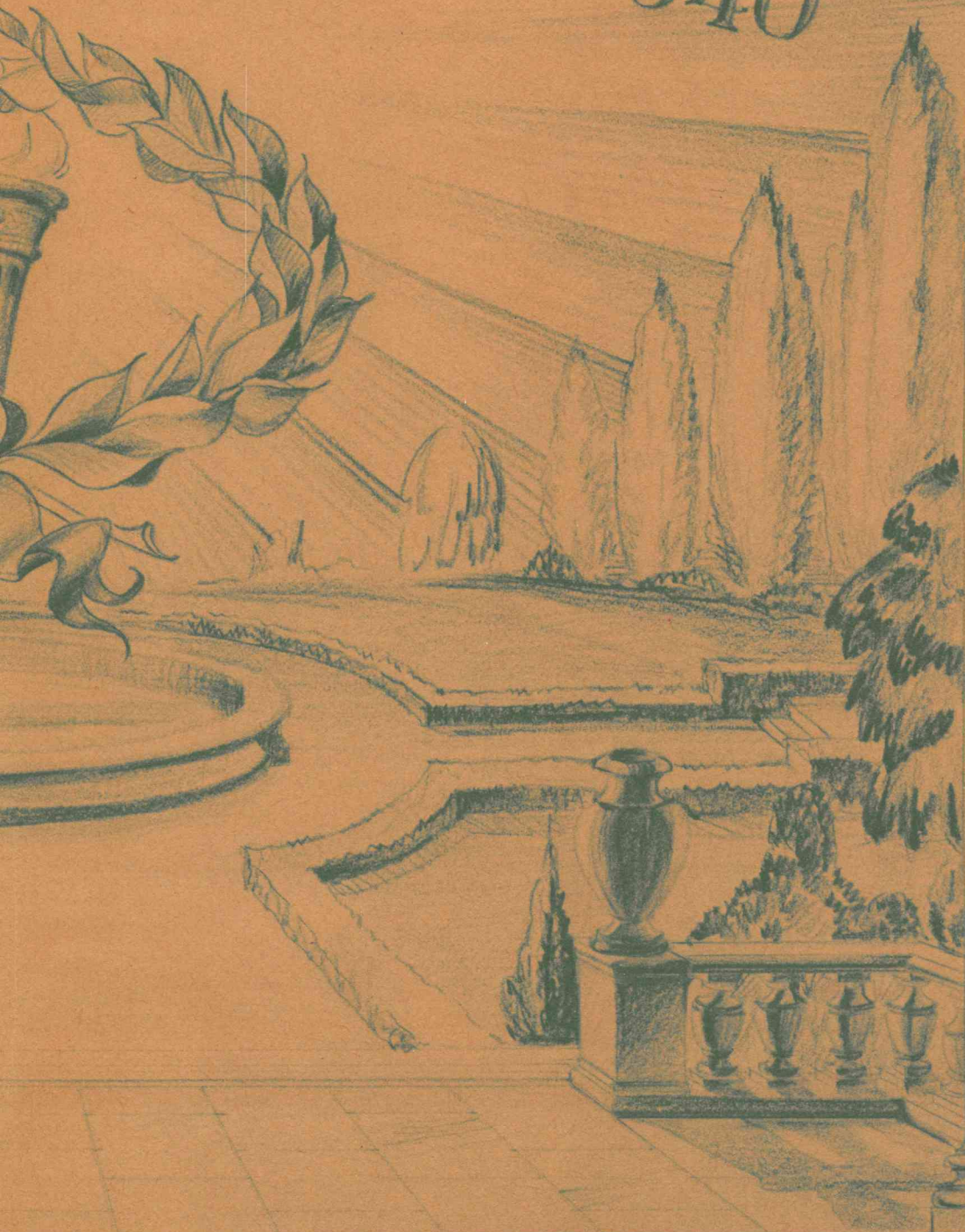
1940

N.B.I. TORCH

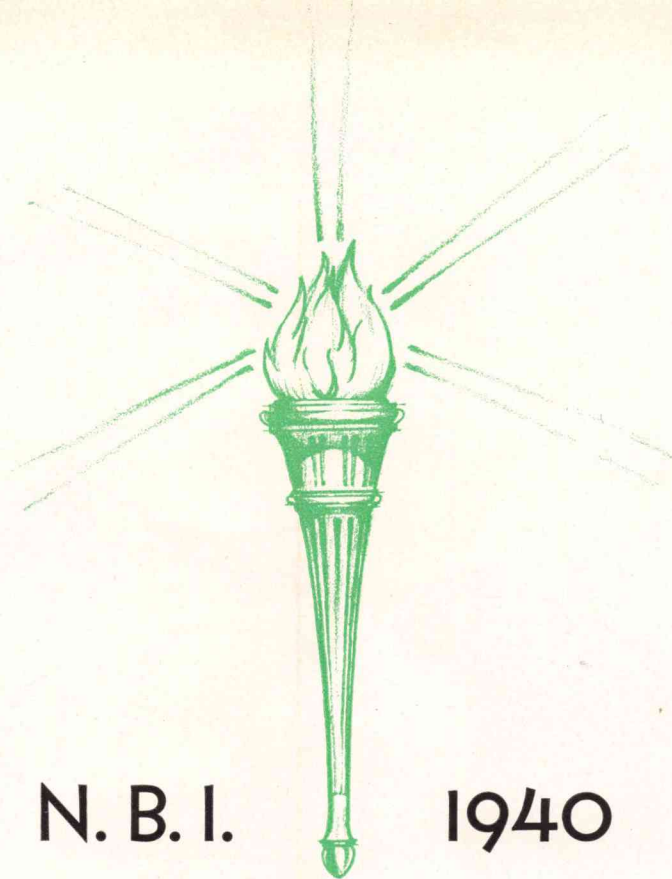


SO RUN THAT Y

BEARERS 1940



MAY OBTAIN



N. B. I.

1940

TORCHBEARERS



THE NORTHWEST BIBLE INSTITUTE



N. B. I.

TORCHBEARERS

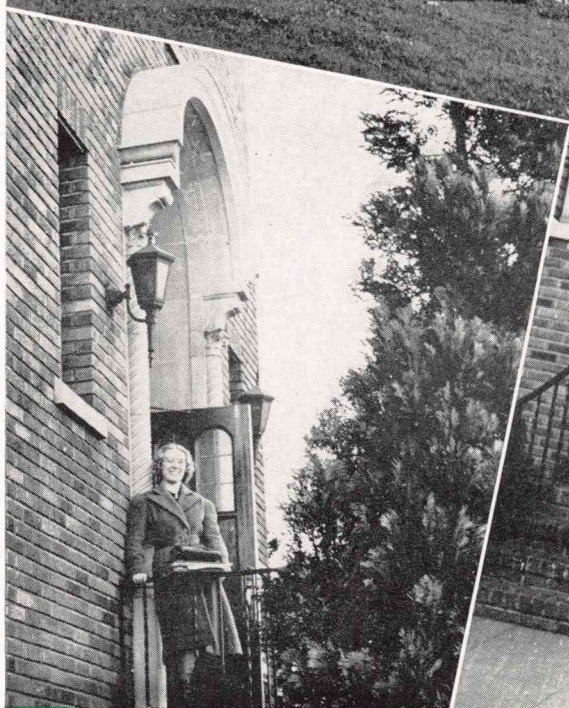
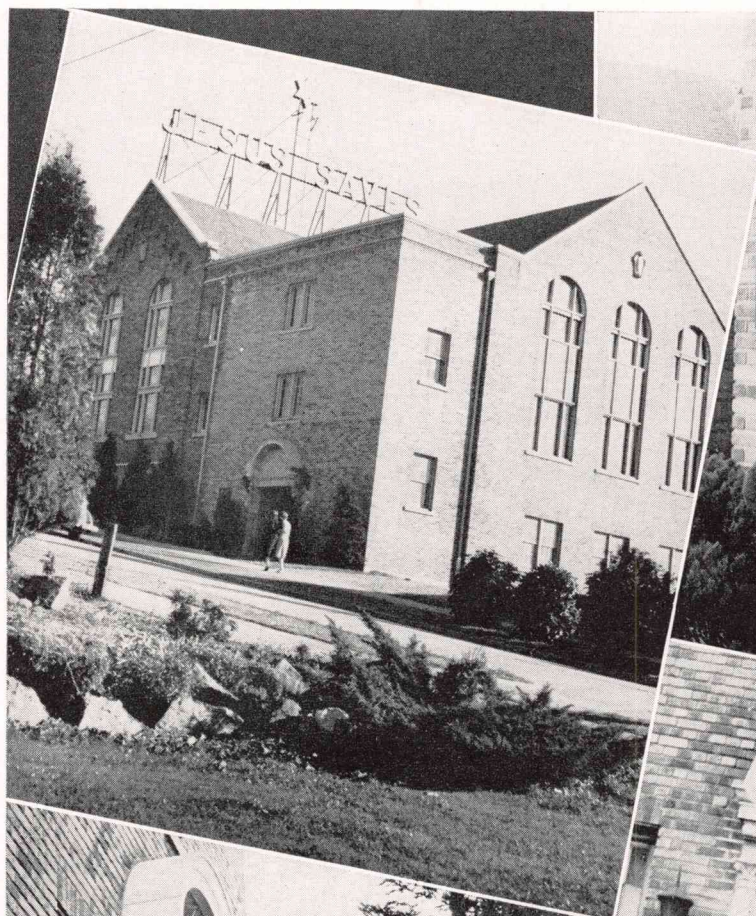
1940

YEARBOOK OF THE
NORTHWEST BIBLE INSTITUTE
6817 EIGHTH AVENUE NORTHEAST
SEATTLE, WASHINGTON



JEAN GRIEVE, *Editor*

PAUL TRULIN, *Business Manager*





Dedication



Torchbearers of the Truth!

For twenty centuries, the Torch of Truth has been faithfully carried by Christian men and women possessed with strength and determination.

In the early days of the Christian era, St. Paul, Tertullian, and St. Augustine bore the torch under almost unbearable persecution throughout the Roman Empire. Centuries later, Luther, Zwingli, and Knox fearlessly spread the truth across Europe. Britain was rekindled by the flame through the Wesleys and Whitfield. Carey sped with the message to India; Judson to Burma; Livingstone to Africa. America was revived by the ministries of godly Finney and saintly Moody.

To the innumerable Torchbearers of the past, and to those of this present day, we dedicate this volume.

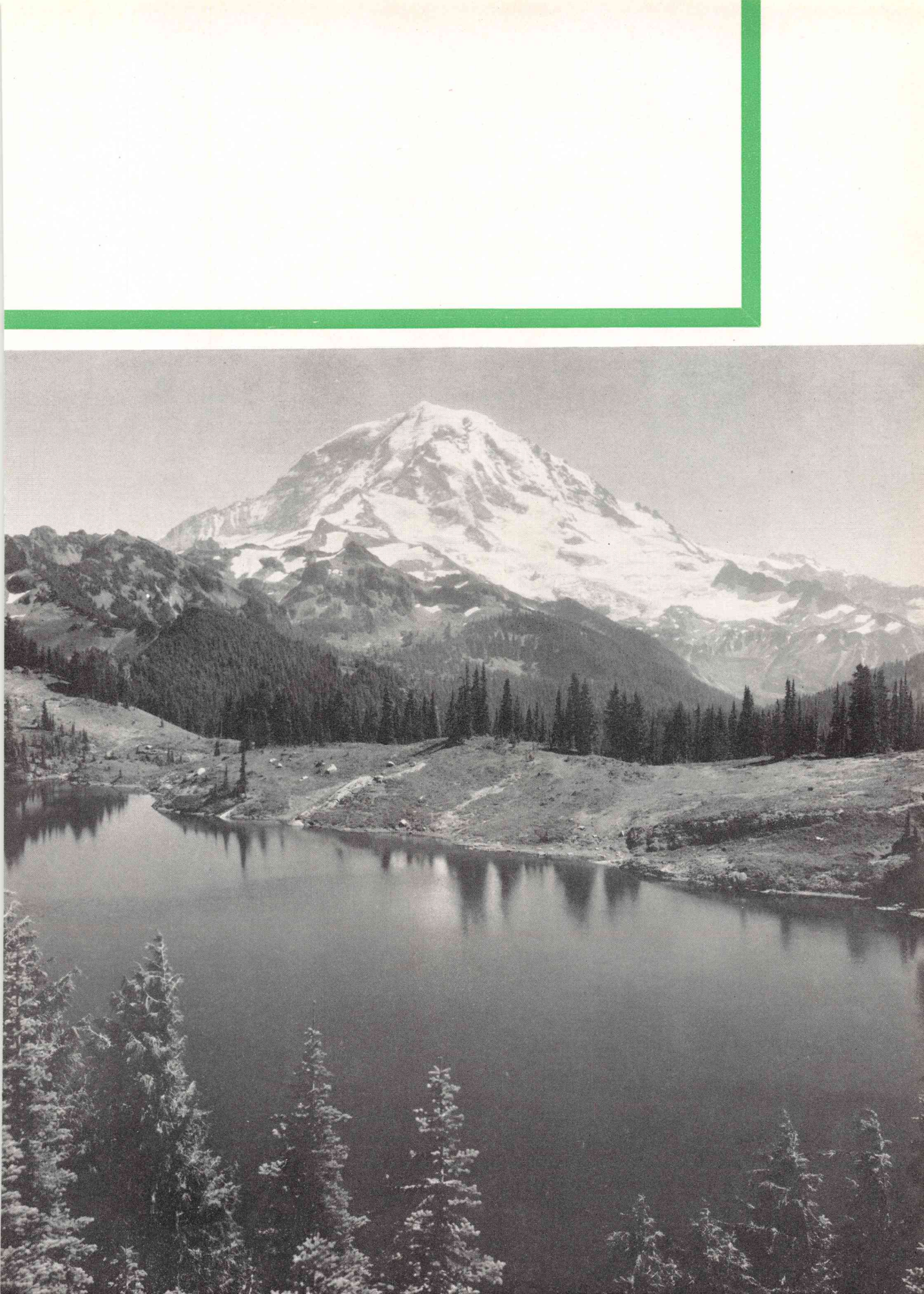


FOREWORD



The lighted torch, held aloft by faithful hands, symbolizes the immutable Word of God shedding spiritual light on the pathway of our pilgrimage through life to eternal righteousness and peace. In presenting to the reader our 1940 yearbook, the Torchbearer, we intend primarily to set forth the many phases of school life. There is, however, a deeper purpose behind its production: to send forth the Word of God to those who tread a doubtful path, even to some who walk in midnight darkness. It is our earnest desire that the spiritual message woven throughout these pages will prove to be a help and inspiration to the reader, and that it may be a beacon, guiding some wayfarer safely to his Heavenly Father's home, there to abide happily throughout eternity.





CONTENTS

- ADMINISTRATION

- CLASSES

- ACTIVITIES





A MESSAGE



FROM REV. HENRY H. NESS, OUR PRINCIPAL

YE ARE THE LIGHT OF THE WORLD

—Matthew 5:14

A Christian worker is essentially a Torchbearer or a Light-bearer. Millions of human souls are groping in darkness, searching for something, they know not what. We, then, as Christian workers, have been commissioned and sent out to lighten the pathway and illumine the minds of these bewildered, lost individuals. We must show them the pathway of Redemption which leads to Glory.

We become Lightbearers only as we carry the true Light—the Light of the world, which is the Lord Jesus Christ—in our own hearts and lives. He it is who seeks to radiate His light through us. How important it is, therefore, to permit this Light, the Lord Jesus, always to shine brightly.

Remember, students, we are only the bearers of the light. May the Lord help you to radiate His light and to preach His message wherever He may send you.

My highest hope for each Torchbearer is that the Lord may use you to fulfill this great commission and be sin-dispelling lights in this darkened world.

—HENRY H. NESS



FROM OUR DEAN...

As Torchbearers you have a priceless privilege and a grave responsibility. Multitudes of people are groping in darkness and many will pass into eternal midnight unless the Light is taken to them. The angels of God would gladly undertake the task, had it been so ordained, but to you the opportunity is given.

The responsibility seems too great to assume, for should you fail, how terrible would be the loss—eternal loss!

But you will not fail. True Torchbearers must succeed no matter what obstacles arise, what difficulties must be overcome, what temptations are encountered.

Remember that He who said, "I am the light," also said, "Lo, I am with you always." With Him as your companion and guide, all the powers of darkness combined cannot impede your progress or hinder your carrying the Light of the Gospel to the uttermost parts of the earth.

March on, Torchbearers, with this song on your lips:

"We'll work till Jesus comes
And then be gathered home."

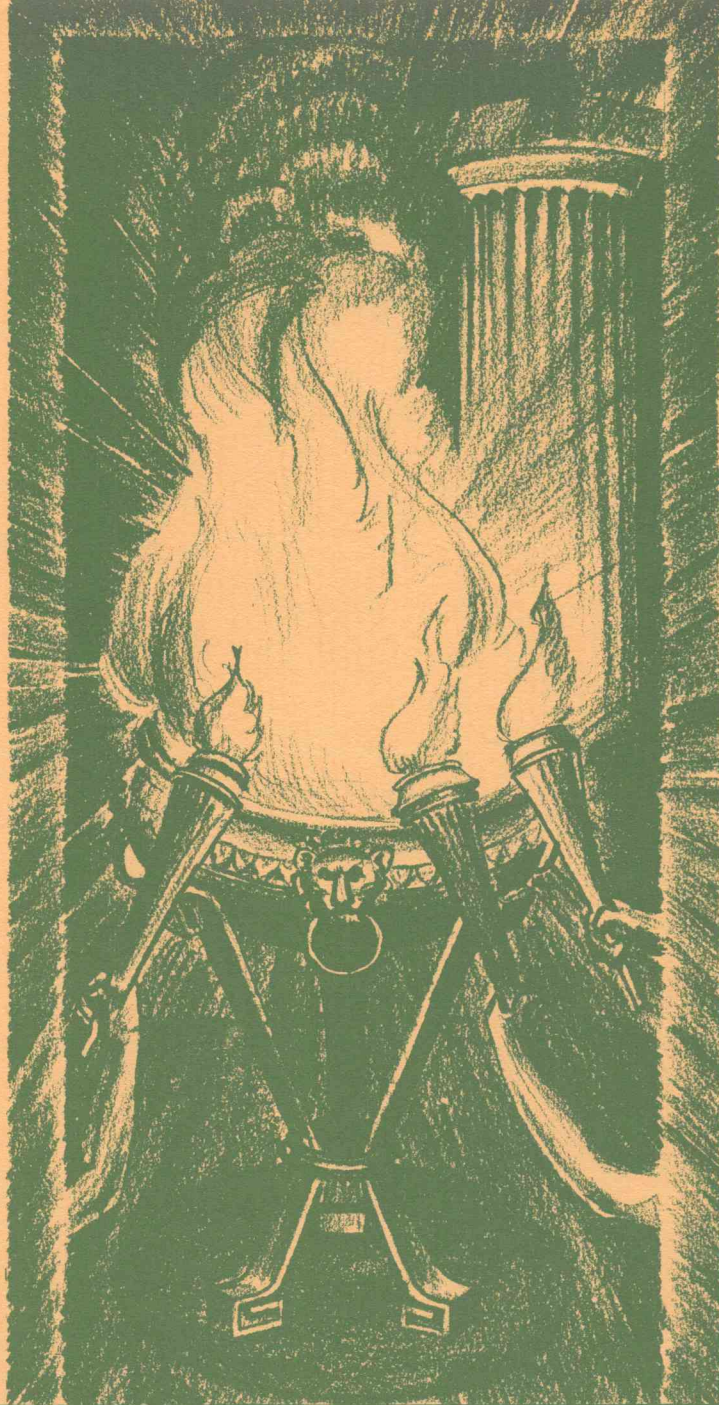
—C. C. BEATTY



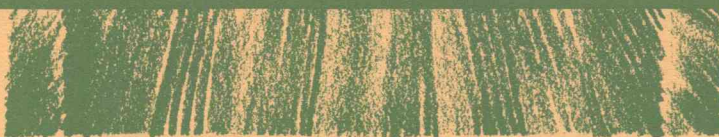
ADMINISTRATION

*A vast crowd has gathered in the arena.
From the altar each runner takes a flaming
torch. The signal is given and the
contestants leap into the race.*

*As the ancient Grecian torchbearer re-
ceived a lighted torch from the altar, so
we, as Christians, are summoned by the
Word of God to bear aloft the message of
free salvation through Jesus Christ. Out
of simple gratitude to God for His price-
less gift, it becomes our duty to gladly
respond to His call to service.*



ADMINISTRATION



LIGHTING THE WAY FOR OTHERS

"Let your light so shine before men, that they may see your good works, and glorify your Father which is in heaven."—Matthew 5:16.

"Torchbearers," the name you have chosen, indicates one of the most important and responsible phases of Christian Life and Service. The far-reaching ministry of word and deed is constantly shining out from every life, and only in the world to come will we know the effect it has had upon those for whom we have illuminated the path of life.

Fashion your lives after our Lord Jesus Christ, so that others may follow your light as you follow His. Your greatest joy in Heaven will be the presence of those who entered because they followed your "Guiding Light." May your joy be full, and your reward great!

—FRANK GRAY

BIBLE SCHOOL COMMITTEE

Rev. Frank Gray, Chairman
Rev. R. F. Ashworth
Rev. C. T. Walberg
Rev. H. H. Ness
Rev. D. H. McLaughlin
Rev. J. E. Rasmussen

BOARD OF DIRECTORS

Rev. Frank Gray
Rev. J. A. Bogue
Rev. P. S. Jones
Rev. O. C. Arnesen
Rev. R. F. Ashworth
Rev. C. E. Butterfield
Rev. R. J. Carlson
Rev. G. L. Coleman
Rev. H. M. Doyle
Rev. K. Leonard
Rev. D. H. McLaughlin
Rev. J. E. Rasmussen
Rev. H. J. Steil
Rev. C. T. Walberg

Honorary Member
Rev. C. G. Weston,
Supt. Oregon Dist. Council



N. B. I. PROGRESSES

The Northwest Bible Institute opened on October 1, 1934, as the official institution of the Northwest District Council of the Assemblies of God. It had been in the minds of the presbyters of the District for some time to establish a Bible Institute. Several attempts were made, but it was not until 1933 that the reality of such an institution began to take concrete form. The Rev. Henry H. Ness, who had just taken the pastorate of the Hollywood Temple, saw the need of a Bible Institute in the Northwest which he presented before the Northwest District Council in session at the Camp Meeting in the summer of 1934. It was then unanimously agreed to establish such an Institute in Seattle. An offer by the Hollywood Temple to house the school free of charge until it was self-sustaining was gratefully accepted by the Council. The Rev. Mr. Ness was appointed principal. Shortly after, the Rev. C. C. Beatty, then laboring with the North Central Bible Institute, Minneapolis, Minnesota, accepted the offer to become Dean of the Institute, and arrived the latter part of August to assume his responsible position.

Literature was printed, and contacts were made with prospective students. On the opening day, eighteen students were enrolled. There was a splendid spirit of co-operation from the beginning, and others came until the enrollment reached forty-eight before the first term ended. Many obstacles had to be overcome, but God over-ruled and the first year proved to be encouraging. At the close of the school term the students went away filled with enthusiasm over their new institution.

During that year, the students made numerous trips in the school bus and many successful services were held, through which other prospective students were contacted.

N. B. I.'s second year was opened October 1, 1935, with an enrollment of one hundred and fifty-three students. The experimental stage past, everyone seemed ready to settle down to hard work. The out-station work increased greatly, thereby creating a demand for students to fill various needs in outlying districts. Many victories were won during the term and the spiritual interest was intensified.

Enlargement of our borders became necessary. A new main office, principal and faculty offices, a music studio and a Senior classroom were added. The prayer room as well as the main auditorium was nearly doubled in capacity. We admire the students and the faculty who day by day competed with the incessant noise of hammers and the raucous buzz of saws during this reconstruction. Great was the rejoicing when on March 7, 1937, the new addition was dedicated unto the Lord.

That year was climaxed by the first graduation of the Northwest Bible Institute, when forty Pioneers received diplomas. Two other classes have followed them into the harvest field of the Lord—the Conquerors and the Life Savers.

The life of the school has been marked by many outpourings of the Spirit of God, when classes have been abandoned and the prayer room filled with students desiring to know God's will for their lives. During these times many received calls—some to foreign lands as missionaries and others as evangelists and pastors in the fields of the homeland.

The Institute, now in its sixth year, has ten missionaries laboring in distant parts of the earth, and other graduates are eagerly waiting for the time when they, too, can go forth to the lands of their calling.

Opportunities to do service for Christ during the 1939-40 school term have increased remarkably. Assignments have included visits to British Columbia, Canada; Gray's Harbor, Yakima Valley, Kittitas, and Raymond, in Washington. On these trips it has been the privilege of the students to witness the conversion of souls and refreshing showers of blessing upon God's children.

As the present term draws to a close, we are anticipating another inspiring graduation when the Torchbearers shall depart from their spiritual home to radiate the Gospel light in a world wrapped in darkness and sin.

May the Northwest Bible Institute continue to be blessed of God, as a great citadel and training quarter for Christian service.

COUNSEL FROM OUR FACULTY . . .



REV. HENRY H. NESS
Principal

Doctrine,
Covenants,
Church Government,
Special Lectures.

BE STRONG

The ancient torchbearers considered their race to be the most important athletic event in their day. Just as the best fitted were the only ones chosen as contestants so each of God's servants must be spiritually strong in order to run successfully the Christian race. He must prepare himself by constant, daily renewing of his spiritual strength. Of necessity this requires a keeping under and bringing into subjection our carnal ambitions and desires. Power to win requires self-government and self-denial without which no one can expect to succeed.

—H. H. NESS



REV. C. C. BEATTY
Dean

Old Testament,
Epistles.

BE PATIENT

Part of the exhortation found in the opening verse of Hebrews twelve is, "Let us run with patience the race that is set before us."

We should remember, however, that in order to run a race with patience, one must necessarily be patient in preparation. "Behold the husbandman", says James, "waiteth for the precious fruit of the earth, and hath long patience for it." After he has labored and planted his seed he must exercise patience.

Thus it is with the student. In training for the race ahead, he must with much patience apply himself to his studies.

—C. C. BEATTY



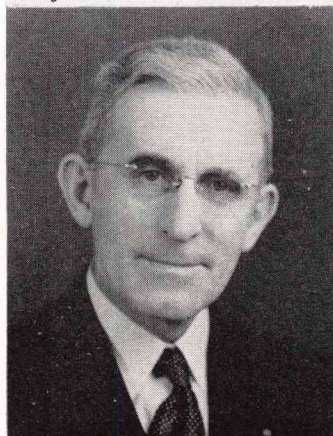
REV. J. A. BOGUE

New Testament, Prophecy,
Christian Evidences, Public and
Effective Speaking, Parliamentary
Law, Dispensations.



REV. E. V. BRONSON

Pastoral Theology, Homiletics,
Doctrine, Polemics, Typology,
Acts, Bible Atlas, Sunday School
Organization.



REV. P. S. JONES

Church History, History of Mis-
sions, Personal Evangelism.

BE DETERMINED

The racer, fixing his eyes upon the goal, leans forward and presses with determination toward the prize. If he turns aside, he misses the mark and loses the reward. The great prizes of life are gained only by physical and mental endurance. However prodigious may be the gifts of genius, they can be developed to perfection only by toil and study.

The prize of the Christian race—the crown of life—is worthy of the most laborious and self-denying efforts. When your heart grows weary by continual exertion, a glimpse of the diadem provided by Christ, will renew your energy.

—J. A. BOGUE

BE PERSEVERING

One of the main essentials in a footrace is perseverance. A contestant may start well, and have promise of becoming a winner, but fail, discouraged by obstacles in the way. A runner may, unwisely, begin the race at top speed, but he will be unable to continue to the end. The marathon runner is a better example of perseverance, because he assumes a slower and more even gait, and maintains it until the goal is reached. We who are in the Christian race must start well and continue at a steady pace to the end, in spite of all difficulties that might hinder.

—E. V. BRONSON

BE VIGILANT

VIGILANCE in running a race is a determining factor of success. The contestant is called upon to examine himself closely, to be examined, and to be prepared to make every needful sacrifice. There must be minute scrutiny of all correlating conditions and a perfect understanding of race principles. Speed is a contributing requisite to win, but even speed must be subordinated to wise control. Overstrain might prove fatal. Under-estimation of the effort demanded to finish the course may easily lead to disaster, and over-confidence also may cause defeat.

By vision, by impartial examination, and by absolute obedience, life's race can be finished with the joy of reward.

—P. S. JONES

BE ANIMATED

"And whatsoever ye do, do it heartily . . ."

The word "animation" implies enthusiastic activity. A righteous cause and a sound program are not sufficient in themselves to guarantee success—action is necessary. Your testimony of what you believe and have experienced must be backed up by spirited, forceful effort in order to bring about real results for God. Activity that is motivated by a genuine inborn desire to win souls will always serve as a testimony to the world of the reality of your Christian experience and the truth of your message.

—D. L. COX

BE DILIGENT

The aim of every runner in a race is to break the tape—a goal not easily attained. They who would run must deny themselves, and be diligent in living up to certain athletic rules which will fit them for the race. We too, as Christians, are in a race, with Heaven as our goal. As we press onward we find that the road is hard. We must "Strive to enter in at the strait gate."

Paul said, "Let us so run, that we may obtain." This we may do, not by turning aside, but, with diligence, keeping our eyes fixed on our goal.

—MRS. HELEN GILES

BE DELIBERATE

Deliberation is a splendid asset to anyone in any undertaking. It is especially essential to the one who is running in a race. By deliberate planning he may best prepare himself for the contest before him.

Paul gave us a valuable exhortation when he said, "Let us lay aside every weight, and the sin which doth so easily beset us." He was comparing the Christian life to the Grecian athletic events so familiar to the early Christians.

As participants in the Christian race, we must consider carefully the obstacles that may impede our progress and prepare ourselves to overcome them successfully.

—MRS. A. B. CHRISTENSEN



PROF. DELBERT L. COX,
B.A., M.A.

Theory of Music and Harmony,
Director of Choir and Orchestra, English.



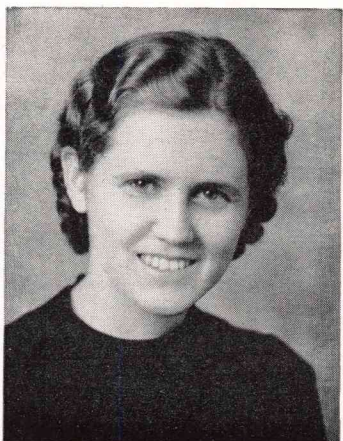
MRS. HELEN GILES,
B.S., R.N.

Personal Hygiene, First Aid, Practical Nursing, Tropical Diseases.



MRS. A. B. CHRISTENSEN

Matron



Janet West
Registrar

"The entrance of thy
words giveth light."
—Psalms 119:130.

"Light is sown for the
righteous, and gladness
for the upright in heart."
—Psalms 97:11.



Ruth Cox
Stenographer

THROUGH THE SCHOOL WINDOWS

SCHOOL OFFICE
Business carefully transacted.

TEACHERS' ROOM
Information willingly supplied.

MUSIC STUDIO
Instruction patiently imparted.

MATRON'S OFFICE
Counsel wisely administered.



JESUS, THE LIGHT OF THE WORLD

REV. E. V. BRONSON

Two mighty opposing forces dominate this world—Jesus Christ, the risen Lord, the Light of the world, and Satan, who rules over the kingdom of darkness. All who are out of Christ are living and walking in darkness. Education and man-made schemes, with all that they have accomplished, could not change the spiritual condition of the world. It has no more knowledge of God and His Word than in the beginning. "None can by searching find out God." "The god of this world hath blinded the minds of them which believe not, lest the light of the glorious Gospel of Christ, who is the image of God, should shine unto them."

But the infinite, all-wise and perfect God has a way, superior to the reasonings of man, by which He is made known. He has provided a Light for this world which is sitting in darkness. It was prophesied, "The people that walk in darkness have seen a great Light: they that dwell in the land of the shadow of death, upon them hath the Light shined." He came with the purpose of "opening the blind eyes", and what He did to the bodies of men was an indication of what He was to do, and did do, to the minds and hearts of men. He gave spiritual sight and understanding. He said to the people, "I am the Light of the world: he that followeth Me shall not walk in darkness, but shall have the Light of life."

Light dispels darkness. As it is in the natural realm, so it is in the spiritual realm. When people who are living in the darkness of sin, receive the light of God's truth coming to them through the written Word and the spoken Word, they enter into light.

Light reveals. A sudden flash of light will expose many things. "The thing that is hid bringeth He forth to light." "The Lord will come who both will bring to light the hidden things of darkness, and will make manifest the counsels of the hearts."

Light reproves. When men receive a revelation of Christ in His purity and glory, that revelation of Him reproves them for their sin.

Light guides. As it was with the pillars of cloud and of fire to the Israelites in the wilderness, showing them the way wherein they should go, by day or by night, so it is now with the Gospel light.

The wicked rebel against the light. They do not want their ways exposed, and they do not part easily with their sinful thoughts and deeds. They say by their actions, if not by their words, "We desire not a knowledge of Thy ways." "Every one that doeth evil hateth the light, neither cometh to the light, lest his deeds should be reprov'd." "Rebellious man is under condemnation, "and this is the condemnation, that light is come, and men love darkness rather than light, because their deeds are evil." Hence they reject it, shun it, and run from it.

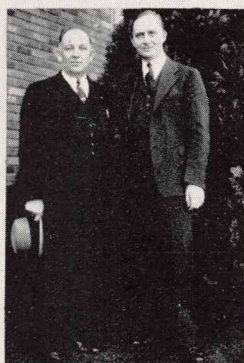
The righteous, however, believe in the light, and love it, for it witnesses to them instead of condemns. They rejoice in it, and seek it continually. They love Jesus, who is the Light of the world, and they delight to read His Word and to fellowship with His people.

For those who reject the light there is still greater blindness, and still deeper darkness. "If a man walk in the night he stumbleth, because there is no light in him." As a man in the night gropes in darkness so they are groping because they refuse and reject the only way out of their hopeless condition. Because they reject the light here they will dwell in darkness eternally.

The children of light, those who accept it, and walk in it, have increasing light. "The path of the just is as the shining light, that shineth more and more unto the perfect day." They shall dwell in the light eternally, and "the city to which they are going has no need of the sun, neither of the moon to shine in it, for the glory of God does lighten it, and the lamb is the light thereof."



ADMINISTRATION AND VISITING MINISTERS



"Happy birthday, Rev. Bronson!"

The family altar.

Time out—Rev. Bogue.

Rev. Johnstone visits N.B.I.

Our radio friend—
First Mate Bob.



Visitors from Headquarters.

Pastor Butterfield, neighboring minister.

The Dean and his wife.

Our studious Professor.

Interesting reading, A.B.C.

A windy day.

"Church History, Rev. Jones?"

Spare moments—Mrs. Giles

Bronson, Beatty, Miller,
Ness, Bogue.

Mother to us all—
Mrs. Christenson.



Rev. Gabrielson, Rev. Ness,
and Rev. Stump.

Oregon visitor—Rev. Weston.

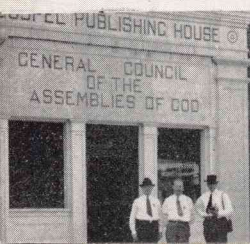
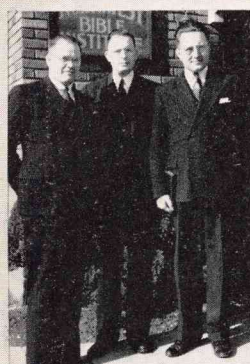
Evangelist Ross.

Rev. Robinson, Victoria, B. C.

Visiting at Springfield.

Gaining back expended
energy—our Dean.

Behind the scenes.



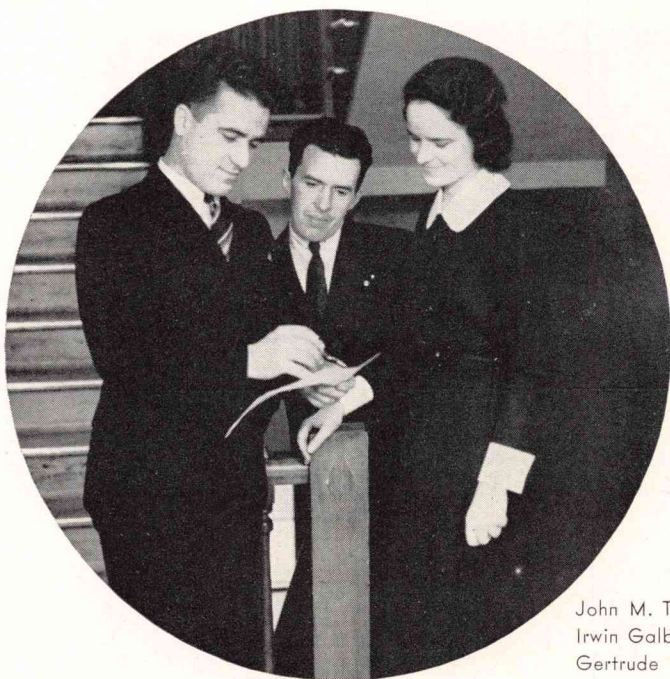


CLASSES

Eager, energetic arms carry their lighted torches swiftly forward with a determination to reach the goal and receive the prize that awaits the successful runner. Thus should we, the bearers of the Gospel of Jesus Christ, give our best for the spreading of this message of light and life. We feel impelled to diligently apply ourselves to study, for there are lessons to be learned and much experience to be gained if we would so run that we may obtain "the incorruptible crown."



CLASSES



CLASS OFFICERS

John M. Tappero, President (left)
Irwin Galbraith, Vice-President (center)
Gertrude Wilkinson, Secretary-Treasurer
(right)

P R E S I D E N T ' S M E S S A G E

Dear Fellow-Seniors:

As we review the past three years we see God's loving hand directing the course of our surrendered lives. Time well spent in profitable training has resulted in our becoming better equipped and disciplined to meet the world. We have been coached to run the Christian race in a more intelligent and effective manner.

A world filled with possibilities lies before us. Realizing this, we feel impelled to take up the challenge and grasp the torch that is extended toward us—the same torch which ministers of the past dared to bear in the spiritual darkness that engulfs the earth.

It is incumbent to us to fearlessly enter the race and bring the light of the Gospel to souls groping in darkness.

My earnest prayer for each one is that every torch may be aflame when He comes.

In His service,
JOHN M. TAPPERO.



S E N I O R C L A S S

"... that ye should shew forth the praises of Him who hath called you out of darkness into His marvelous Light."—I Peter 2:9.

"Follow Me." Thus flashed the call to us from our Lord Jesus Christ, the Light of the world—a call to a definite salvation.

Receiving the Torch of Truth, ignited by the fire of the Holy Spirit, we were placed in N. B. I.—although to some the reason was somewhat unapparent. Under the ministrations of godly, Spirit-filled men, who before-times had received the light of the glorious Gospel, we became more capable of unwaveringly holding aloft our Torches.

We are now better equipped to take our place along life's route, and reveal the true Way to others. With an unshakeable faith in God we shall join with His people who have gone before, as the lights of God in dark places.

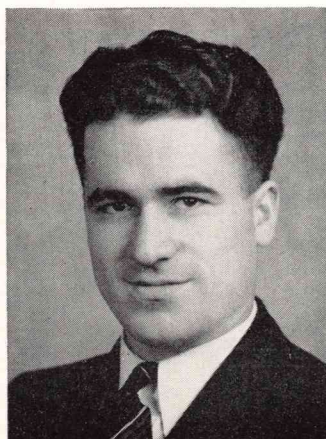
May we lift high the light of Truth in name, deed, and reality, until "the Sun of Righteousness arise," forever dispelling the powers of darkness!

S E N I O R S

JOHN M. TAPPERO, President
Vancouver, B. C., Canada

Distinctive personality, demonstrated leadership, consecrated vitality.

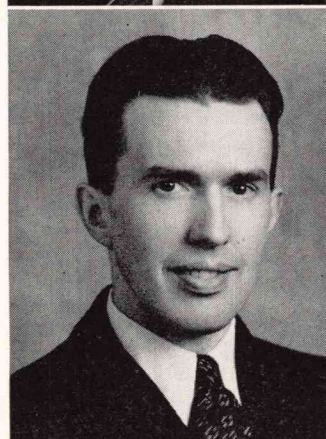
"The fear of the Lord is the instruction of wisdom; and before honour is humility." Proverbs 15:33



V. IRWIN GALBRAITH, Vice-President
Seattle, Washington

Only a true Christian can be a gentleman.

"There is no wisdom nor understanding nor counsel against the Lord." Proverbs 21:30



GERTRUDE F. WILKINSON, Secretary-Treasurer
Great Falls, Montana

Every true friend is a glimpse of God.

"Our help is in the name of the Lord, who made heaven and earth." Psalms 124:8



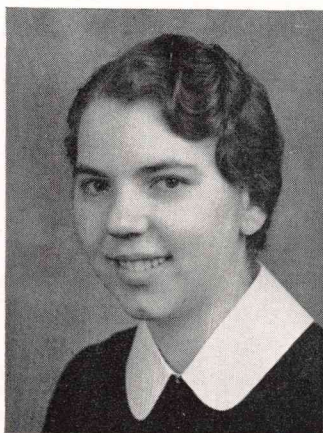
L. CLARE ALLEN
Yakima, Washington

Patience is powerful.

"Man shall not live by bread alone, but by every word that proceedeth out of the mouth of God." Matthew 4:4



S E N I O R S



HILDUR C. ANDERSON
Everett, Washington

The pioneer spirit—the conquering faith.

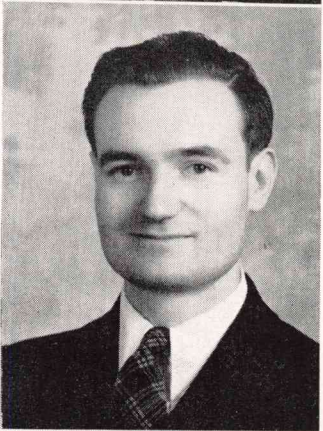
"A good name is rather to be chosen than great riches, and loving favour rather than silver and gold." Proverbs 22:1.



MARGARET E. BANKS
Albany, Oregon

Give us such hearts that are large as their heritage, spirits as free as the breeze.

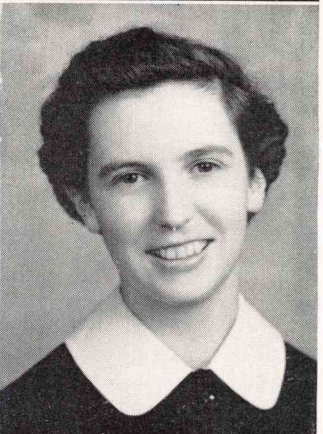
"Let my heart be sound in Thy statutes." Psalms 119:80.



HENRY BERENTSEN
Seattle, Washington

Cheerfully ambitious—ready for service!

"He that winneth souls is wise." Proverbs 11:30



ROSALIE P. COWPER-SMITH
Salmon Arm, B. C., Canada

Outward sunshine, inward joy.

"Yet I will rejoice in the Lord, I will joy in the God of my salvation." Habakkuk 3:18.

S E N I O R S

FRANK R. DAVIS
Yoncalla, Oregon

A good heart never changes, but keeps his course truly.

"The fear of the Lord is the beginning of wisdom." Proverbs 9:10



MARY N. FARRANT
Chilliwack, B. C., Canada

Depth of friendship can only be measured by the depth of the heart.

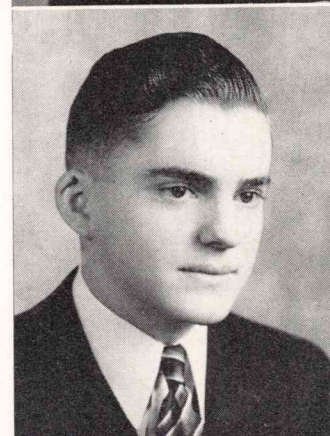
"Not by might, nor by power, but by my spirit, saith the Lord of hosts." Zechariah 4:6



BEN R. FORD
Ellensburg, Washington

Great men can do their greatest work no better than "just so."

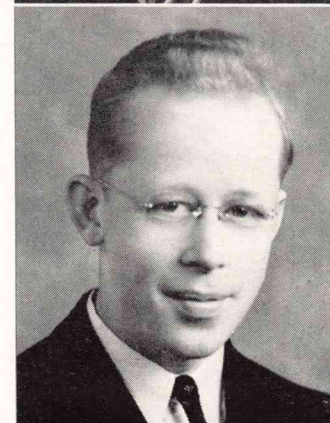
"Commit thy works unto the Lord, and thy thoughts shall be established." Proverbs 16:3



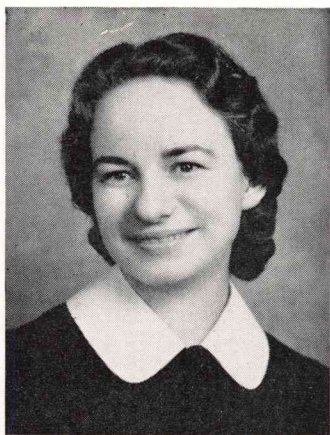
HARRY D. FRANCIS
Victoria, B. C., Canada

Youth holds within itself the fashion of its future.

"The Lord is good, a strong hold in the day of trouble." Nahum 1:7



S E N I O R S



EUNICE M. FRANK
Seattle, Washington

Those who bring sunshine to the lives of others cannot keep it from themselves.

"The fear of the Lord is a fountain of life." Proverbs 14:27



EMMITT E. GEESEY
American Falls, Idaho

The heart that leans on God is happy anywhere.

"A soft answer turneth away wrath: but grievous words stir up anger." Proverbs 15:1



JEAN E. GRIEVE
Mirror, Alberta, Canada

Her ways are ways of pleasantness and all her paths are peace.

"In the way of righteousness is life; and in the pathway thereof there is no death." Proverbs 12:28



DORIS E. HANSON
Fargo, North Dakota

A soul expressed in "music that gentler on the spirit lies than tir'd eyelids upon tir'd eyes."

"In the fear of the Lord is strong confidence." Proverbs 14:26

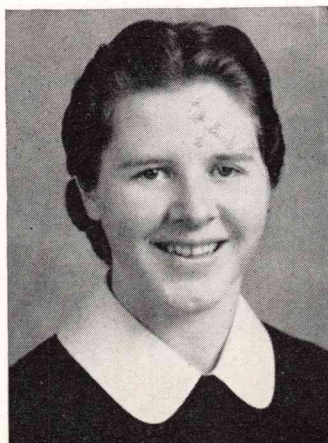
S E N I O R S

MARIAN A. HARPER

Billings, Montana

Virtue is true happiness, simplicity true beauty.

"A faithful man shall abound with blessings." Proverbs 28:20



ARLO B. HENDRICKS

Prescott, Arkansas

The endurance of the cross is the assurance of the crown.

"He that followeth after righteousness and mercy findeth life, righteousness, and honour." Proverbs 21:21

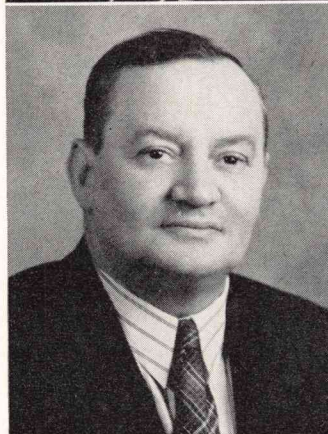


WILLIAM R. HOEFER

Seattle, Washington

They see best who see Christ alone.

"He that handleth a matter wisely shall find good: and whoso trusteth in the Lord, happy is he." Proverbs 16:20



MYRTLE H. HOYLAND

Great Falls, Montana

Kind hearts are more than coronets.

"The name of the Lord is a strong tower: the righteous runneth into it, and is safe." Proverbs 18:10



S E N I O R S



DACIE P. JAMES
Myrtle Point, Oregon

A holy life is made up of a succession of holy moments.

"How much better is it to get wisdom than gold! and to get understanding rather to be chosen than silver!" Proverbs 16:16



MARCELLA I. JOHNSON
Melrose, Minnesota

The Old Story in the heart, expressed in a joyous new song on the lips.

"He is a shield unto them that put their trust in Him." Proverbs 30:5



WAYNE O. JOHNSTON
Walla Walla, Washington

The look composed, and steady eye
Bespeak a steady constancy.

"A man shall not be established by wickedness: but the root of righteousness shall not be moved." Proverbs 12:3



LEROY K. LEONARD
Bremerton, Washington

Determined pursuing determines achievement.

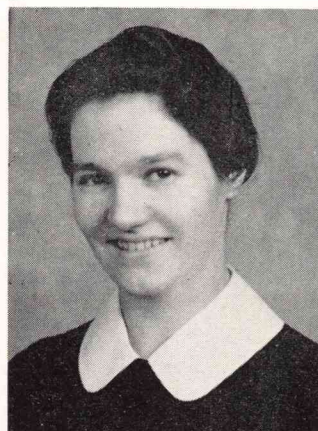
"He that waiteth on his master shall be honoured." Proverbs 27:18

S E N I O R S

ANNE LITTLE
Seattle, Washington

A loyal heart—a spirit pure and true.

"Take away the dross from the silver, and there shall come forth a vessel for the finer." Proverbs 25:4



PRISCILLA C. MARR
Seattle, Washington

With Christ enthroned within, gentleness and peace prevade without.

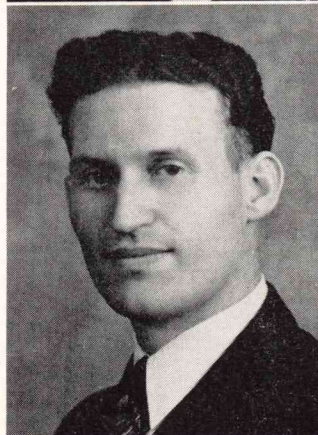
"The fear of the Lord tendeth to life: and he that hath it shall abide satisfied." Proverbs 19:23



HAROLD W. MATSON
Victoria, B. C., Canada

His treasures—God and souls.

"Ask of me, and I shall give thee the heathen for thine inheritance." Psalms 2:8



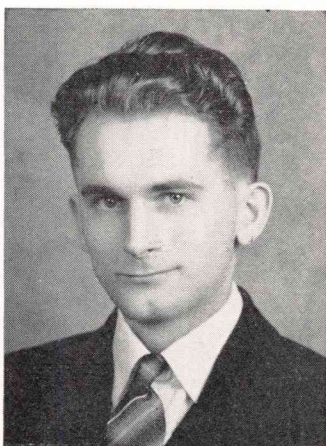
NANCY O. NORMAN
McKenna, Washington

Where words are scarce, they are seldom spent in vain.

"The path of the just is as the shining light, that shineth more and more unto the perfect day." Proverbs 4:18



S E N I O R S



C. PHILIP NORMAN
McKenna, Washington

Not known by bustle, but by useful deeds.

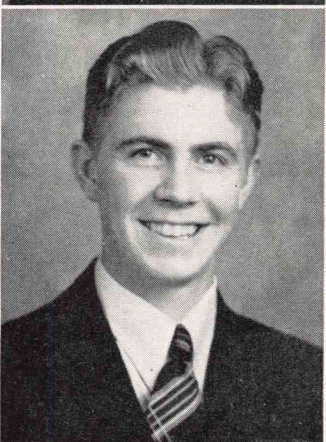
"Thy word is very pure: therefore thy servant loveth it." Psalms 119:140



ELSIE F. OLSEN
Rainier, Oregon

A Dorcas' hand, a Mary's heart.

"Better is little with the fear of the Lord than great treasure and trouble therewith." Proverbs 15:16



PAUL B. OLSON
Kalispell, Montana

Humility is the hall-mark of wisdom.

"The righteous shall flourish as a branch." Proverbs 11:28



DOROTHY J. SCHUSTER
Seattle, Washington

Speech is silver, silence is golden.

"In the morning sow thy seed and in the evening withhold not thine hand." Ecclesiastes 11:6

S E N I O R S

FRED A. SHAMP
Winfield, Alberta, Canada

Difficulties become opportunities to those who act for God.

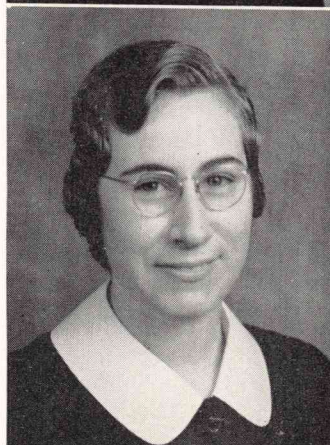
"I have set the Lord always before me: because he is at my right hand, I shall not be moved." Psalms 16:8



VERNA I. SPENCER
Seattle, Washington

Discouragements overcome become encouragements to others.

"A word fitly spoken is like apples of gold in pictures of silver."
Proverbs 25:11



FRANCES L. THOMPSON
Seattle, Washington

Kindness has resistless charms.

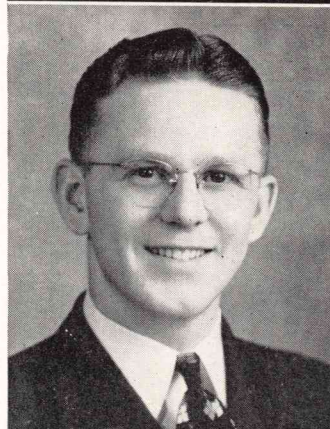
"The fear of the Lord is the beginning of knowledge." Proverbs 1:7



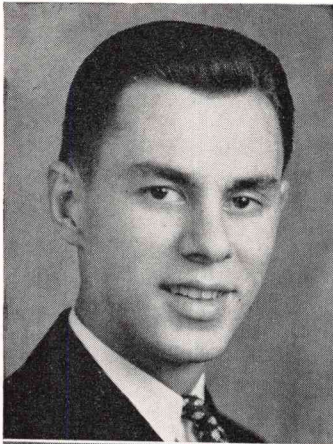
PAUL G. TRULIN
Oakland, California

Experience is by industry achieved.

"Where there is no vision the people perish." Proverbs 29:18



S E N I O R S



MAGNUS E. UDD
Raymond, Washington

A merry heart goes twice the way.

"I will love thee, O Lord, my strength." Psalms 18:1



ETHEL WADELIN
Eburne, B. C., Canada

Consecrated ability and reliability make a good team.

"Whatsoever thy hand findeth to do, do it with thy might."
Ecclesiastes 9:10



CHRIS R. WALKER
Seattle, Washington

Give to God of the best you have and His best will come back to you.

"Wisdom is the principal thing; therefore get wisdom: and with all
thy getting get understanding." Proverbs 4:7



EDNA A. WAUGH
Great Falls, Montana

Of every noble work, the silent part is best.

"In thy presence is fullness of joy." Psalms 16:11

ROSE M. WEBB
Livingston, Montana

Good deeds are ever-blooming flowers.

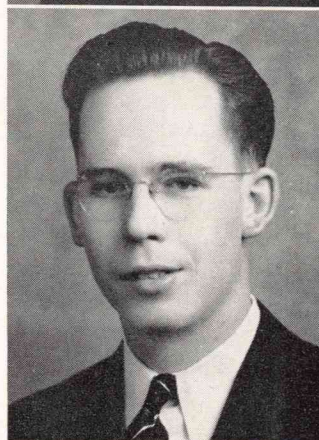
"He that speaketh truth, sheweth forth righteousness." Proverbs 12:17



ANDREW G. WEK
Nemiscam, Alberta, Canada

The best of all the preachers are the men who live their creeds.

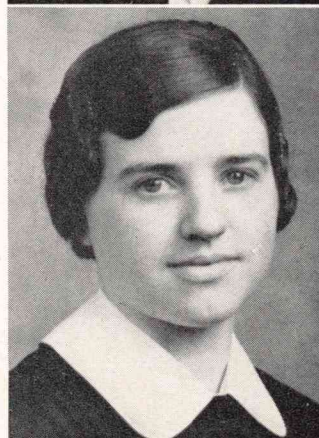
"Good understanding giveth favour; but the way of transgressors is hard." Proverbs 13:15



JULIA N. WELTER
Nashville, Oregon

A constant fidelity in small things is a great and heroic virtue.

"He taught me also, and said unto me, Let thine heart retain my words: keep my commandments, and live." Proverbs 4:4



PHYLLIS B. ZAPUTIL
Aberdeen, Washington

The Christ of the Cross is the theme of her song.

"In all thy ways acknowledge him, and he shall direct thy paths." Proverbs 3:6



A
DAY'S OUTING
FOR THE
TORCHBEARERS



**CLASS OFFICERS**

Leland Morse, President (left)
Harriet Kampfer, Vice-President (center)
Olga Wek, Secretary-Treasurer (right)

We, the Junior Class, have spent many precious hours together feasting on the truths hidden in the eternal Word of God and have experienced its sanctifying influence upon our lives. During this, our second year, our hearts and minds have been illuminated and the Holy Spirit has revealed Jesus unto us, in a clearer and more soul-stirring way.

One thing that we have learned is that the first essential in witnessing for God is a life pleasing to Him. It was the spiritual life and background which aided every worker for Christ in the past, and our God has never changed. Timothy's humble, godly, and Spirit-filled life serves as a good example of this. Through prayer, Bible study, and practical work, we are permitting our blessed Lord to equip us for the great task of soul-winning which lies before us, for "the harvest truly is plenteous, but the labourers are few."

It is in gratitude for what Jesus Christ means to us that we consecrate our lives for the furtherance of His Gospel.

J U N I O R S



LELAND MORSE,
President
HARRIET KAMPFER,
Vice-President
OLGA WEK,
Secretary-Treasurer
CARL ANDERSON

AGNES APELAND
CORNELIUS ASKREN
HELEN BEAT
VIRGINIA BRUSS

LEONA BURDICK
DAVID BURKE
FLORENCE CHAMBERS
BEULAH CHAMBERS

WESTMORE COWPER-SMITH
TRESSIE CUNNINGHAM
WILLIAM DUTTON
INEZ DYE

WYLIE ELDER
LOUISE FENTON
LLOYD FOSNER
JOHN FRIESEN

FRANK GIBBONS
MILDRED GIESLER
LOUIS GOSLING
RAY GRAFFE

MARGARET GUSTAFSON
EVA HANSEN
DAVID HARRIS
CARL HINES

PHYLLIS HUENEFELD
LUANA HURD
EFFIE HUSET
RUBY HUTTON

J U N I O R S

PEARL INDBJO
JESSIE IRBY
ROBERT JOHNSON
MARIE JOHNSRUD



DICK JOHNSTON
MILDRED JONES
JUNE LUNDQUIST
WALTER LYON



RACHEL MASER
VELMA McELYEA
ALLEN MILLER
IRA MONSON



ARLEON PARSONS
EVELYN PETERSEN
MAXINE RICHARDSON
JESSIE RIDDOCH



NILS SATTERLUND
DOROTHY SCHMUDE
THOMAS SHAW
DOROTHY SIEG



DOROTHY VANYI
EMIL VANYI
AMANDA VOLLERTSEN



PHYLLIS WAKEFIELD
HELEN WEGER



19

41

BUILDERS



A place of interest—the
Bulletin Board

"... and who knoweth whether thou art come to the kingdom for such a time as this." Esther 4:14

Our hearts are stirred when we meditate upon the grave possibility that we have been destined to be the mediators of the hour: those who are to be instrumental in reconciling the souls of men to God.

Conscious of this deep realization and challenge within the depths of our hearts, that the Torch of Christ's Gospel message must be borne by us, we have entered this Institute to study God's Word. Days, precious days have lengthened into months. Joys and sorrows, defeats and victories have drawn us closer to our Master and have bound us together in Christian fellowship.

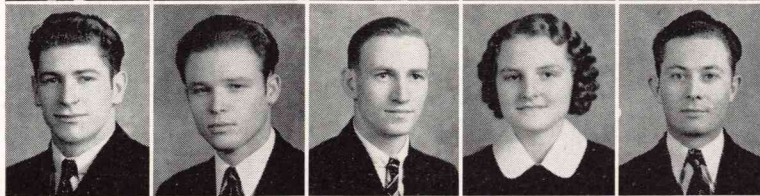
As we look out upon a darkened world, from within comes the cry, "Oh, God, keep us faithful to Thee. Help us ever, by godly, consecrated lives, to hold the Torch of Truth, that precious souls in darkness may come to know Thee, 'whom to know aright is life eternal.' "

FRESHMEN

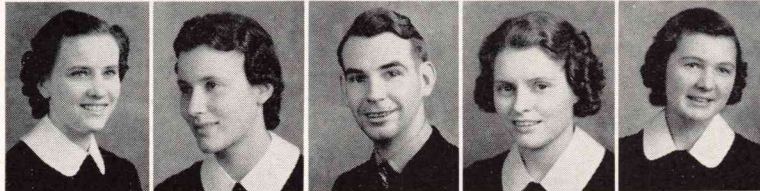
WILLIAM ALEXANDER
JANE ARMSTRONG
ALLEN BABCOCK
ANNA BADTEN
RUTH BADTEN



NEWTON BAKER
JOHN BARROWS
LEONARD BEALE
MARGARET BORN
LEONARD BREWER



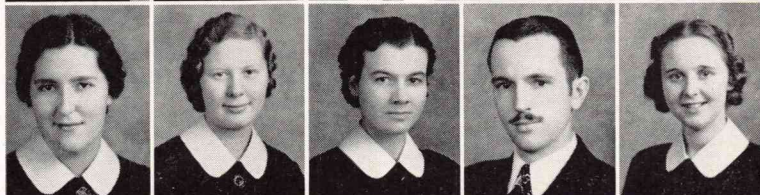
MARGARET BROWN
JANE CHANDLER
RALPH CHERRY
MARGARET CHESNEY
LOREE COLLINS



BERNICE CONNICK
VIVIAN DOLLARHIDE
MARIE DRESSLER
GEORGE EFFMAN
KENNETH ELLSWORTH



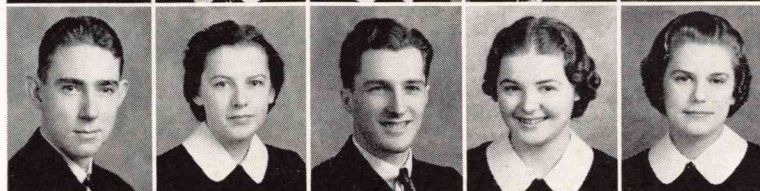
PEARL ESTEP
BONNIE FENTON
LILLIAN FENTON
PAUL FENTON
RENA FOSNER



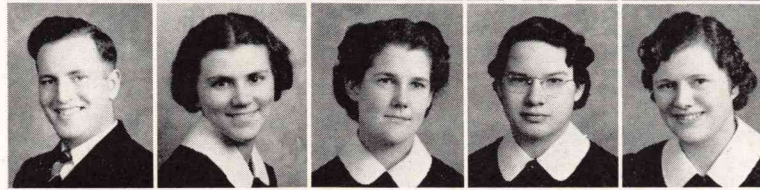
FERN FREDERICK
ANNA BELLE FRIEND
GLADYS FURLIE
GEORGE GEESEY
CORA GILLEY



KENNETH GREGG
MABEL HAGEN
CHESTER HALL
WILMA HALL
HAZEL HAUGLAND



ALFRED HAYES
RUTH HAYES
GERTRUDE HEICKSEN
PAULINE HINES
ALICE HITCHEN



ERNA HOLAN
ELEANOR HOSKINS
HELEN ISAAK
LORENE ISAAK
CATHERINE JOHNS



F R E S H M E N



ELOISE JOHNSON
PAULINE KELLMER
ROBERT KIMBALL
ADA KRELL
JOYCE LA COUNT

ROBERT LANG
CLAUDIO LANUZA
FRANCES LENKER
RESSA LEONARD
ALICE LIERMAN

JUNE LILLY
OLGA LJUNGHAMMAR
LEO LOVIN
DALE LOVING
GRACE MADSEN

DOROTHY McCULLEY
NORMAN McMANUS
JUNE MITCHELL
JUNE MORSE
LEONARD OLSON

OTTO OLSON
MARJORIE PAGE
NORAH PALMERTON
CLEM PEARSON
PETER PETERSEN

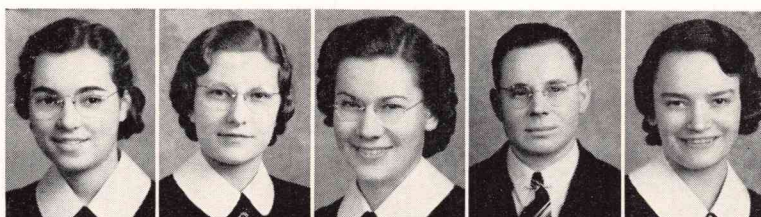
EVELYN PETERSON
ARTHUR PHILLIPS
DAVID PHILLIPS
ESTHER PISTER
DOROTHY RATHJEN

LYDIA RICH
VIOLET RICHARDS
NORMA ROBERTS
RUTH RUFF
ORLO ROWE

DELORIS SCHAEFER
DOROTHY SCHEIBNER
OLIVER SEARL
FLORA SHAFER
RAYMOND SHAMP

FREDA SHOOK
LUELLE SIEG
PAULINE SKJEIE
GENEVIEVE SPAIN
LUCILLE STARNES

KATHERINE STAVROS
LeMARTHA STEHR
VIOLA STEINER
HAROLD STIMMEL
DOROTHY THOMPSON



EUNICE TVARUZEK
CONSTANCE UPSHAW
THORA WAAG
EARL WAUGH
FOSTER WOOD

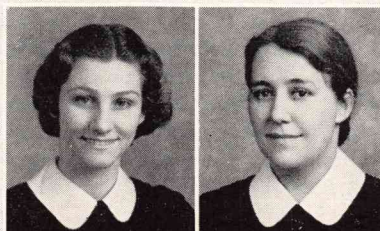


MARGARET WOODS
WARD WOODS
JOHN ZYSSET

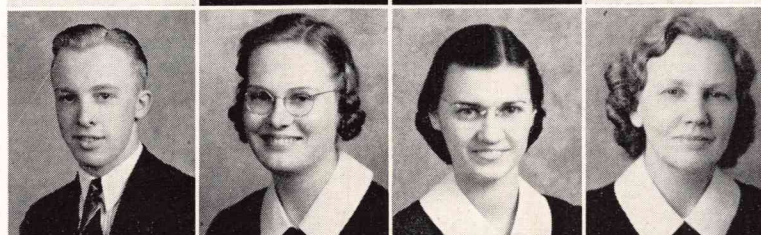


SPECIAL STUDENTS

RUBY ALLEN
MARGUERITE EMERICK



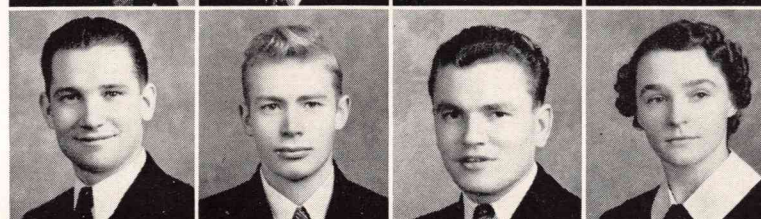
WESLEY HANSEN
HELENE HOALAND
ROSALIE JOHNSTON
VIOLET KASPARIE



ALBERT MALTBIE
ROBERT PEEL
MARIE PETERSEN
ALICE SCHUBERT



THEODORE STOHR
WARREN TABER
HARDY THOMPSON
MARY VOSPER



THE TORCH RACE

Rev. P. S. Jones

The world has ever suffered by placing emphasis on the wrong thing, exalting the physical nature of man to the neglect of the spiritual. In old books we read of the ancient Greeks marshalled into mighty amphitheaters to enjoy many forms of athletic excitement and to feast their sensuous natures in looking upon different kinds of sports. The same paganizing influence is at work today, for we behold an appalling interest in physical development and entertainment throughout all departments of national and individual life.

The true Christian, although not in sympathy with the carnal, sporting spirit of the age, can find many beautiful spiritual lessons by perusing the story of historic competitive games.

Strenuous preparations were demanded of the participants in these Olympic games. There was perfection of training for utmost strain and stress, and to the fittest went the laurel crowns and the plaudits of the nation.

The record is found of special torchlight races, one particular kind of which was a relay race, with lines of runners posted at intervals. The race was severe, and preparation involved sacrifice. The lighted torch taken from the altar of a pagan god was handed from runner to runner placed at designated points, running at topmost speed. Plato speaks of "handing the torch of life from one generation to another."

Surely there is truth here for the Christian runners, prepared unto every good work, running full speed and with all diligence, handing the blessed torchlight of Truth from one to the other, and ever striving for the prize that is set before. The torches are lighted at God's altar, and the runners are prepared with necessary training for the race that demands utmost effort. Body, soul, and spirit must be well formed for tremendous exertions, for it is "he that endureth unto the end" that shall be saved.

The Greek runner of old must run "light." Even an extra ounce of added weight might defeat his cherished ambitions. So the Christian must be stripped of all accessories and lay aside all impedimenta that would reduce speed.

The competitor of old, in making ready for the race, must exercise his body regularly and intelligently, and must eat of those things that would build up his stamina. Here again are lessons for the Christian, who will need to exercise his spiritual nature by prayer and supplication, finding that the "Spirit helpeth our infirmities", and who will be called upon to eat the pure Word of God which giveth strength to the soul.

The Greek contestant must breathe deeply of the pure air so that his lungs would be able to meet the demand of mighty effort. No Christian can afford to live in the polluted atmosphere of this world, but he must dwell in the pure fellowship of the Spirit and amid the holy associations of God's sanctuary.

There was only one starting place for the runners, and there is only one place where the Christian can begin to run toward Heaven: it is "at the Cross, where we first saw the light."

There were many stipulations given the runners of old, many rules and regulations to be observed. No Christian can run for God unless His precepts and counsels are adhered to. There is no separated individualism in racing, but a submission to His will in all things. "Forgetting the things that are behind," and taking no notice of the comments of onlookers, the successful runner steadily pursues his course.

There is a thrill about a race. The crowds of this world watch with bated breath and rise to unbounded enthusiasm as the runners advance. There is a bigger thrill about the Christian race. Amid an innumerable company of heavenly witnesses, the runner covers the course, holding aloft the torchlight of the Gospel, ever pressing toward the mark for the prize of the high calling of God in Christ Jesus. God grant that the race may be run with patience, looking unto Jesus, the author and finisher of our faith!



ACTIVITIES

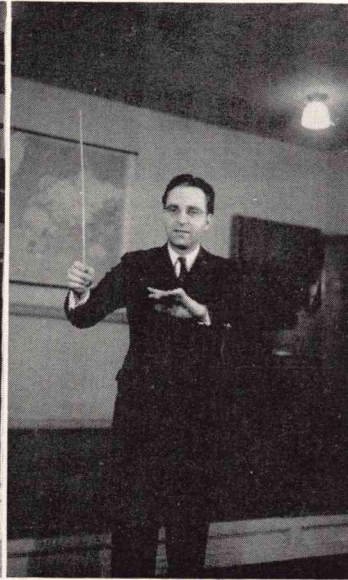
The moment of triumph! Arduous, painful effort exerted in the race is more than repaid, for the runner has reached the goal. When the Christian has finished his race, every act of service motivated by holy desire will reap a sure reward, even the 'Crown of Righteousness' which was spoken of by Paul. Let us strive to keep our spiritual vision centered upon the promise of Him who said: "Be thou faithful unto death, and I will give thee a Crown of Life."



ACTIVITIES



Prof. D. L. Cox, Music Director
Doris Hanson, Choir Pianist



Professor Cox conducting

M U S I C

"Music can move or melt an audience and ought therefore to be made a powerful auxiliary to the faithful preacher." These are the words of a gospel song writer who speaks out of the experience of years spent in Christian work. It is an undisputed fact that today the gospel ministry of music occupies a place of unequalled importance in Christian activity.

At the Northwest Bible Institute, musical instruction has been given a place of prominence. It is not only included in the regular classwork of the three-year course, but it is also sponsored in many extra-curricular activities. Our large student orchestra and radio choir offer talented students valuable opportunities for practical musical experience, and the many vocal and instrumental solos, duets, and other combinations are always in demand for use in public gatherings.



CHOIR PERSONNEL

SOPRANO

Margaret Banks
Virginia Bruss
Eunice Frank
Fern Frederick
Luana Hurd
Rosalie Johnston
Harriet Kampfer
Dorothy Scheibner
Dorothy Sieg
Genevieve Spain
LeMartha Stehr
Mary Vosper
Phyllis Wakefield
Olga Wek

ALTO

Wylie Elder
Mary Farrant
Rena Fosner
Jean Grieve
Doris Hanson
Pearl Indbjo
Marcella Johnson
Anne Little
Priscilla Marr
Lucille Starnes
Katherine Stavros
Viola Steiner
Margaret Woods
Phyllis Zaputil

TENOR

Henry Berentsen
Westmore Cowper-
Smith
William Dutton
Dick Johnston
Robert Peel
Thomas Shaw

BASS

Cornelius Askren
David Burke
Harry Francis
John Friesen
Leroy Leonard
Magnus Udd
Andrew Wek

MUSIC COMBINATIONS

1. "The Twins", David and Arthur Phillips.
2. Orchestra Leader—David Burke.
3. Doris Hanson and Luana Hurd.
4. The Torchbearers Trio.
5. Robert Kimball, a serious saw soloist.
6. The Everett Duet.
7. A group of smiling soloists.
8. Olga and Rosalie.
9. The Sieg sisters.
10. The Yakima Valley Quartet.
11. The Builders Trio.
12. A band of Gospel Accordionists.
13. The Senior Trumpeters, John and Andrew.
14. Hammering Harmoniously — LeMartha and Marcella.

ORCHESTRA PERSONNEL

Prof. Delbert L. Cox, B.A., M.A., Director

VIOLIN

Westmore Cowper-Smith
Rena Fosner
Helen Isaak
Eloise Johnson
Harriet Kampfer
Robert Peel
Marie Petersen
Maxine Richardson

MANDOLIN

John Friesen
Paul Olson
Viola Steiner

GUITAR

Ruby Allen
Walter Lyon
Norah Palmerton
Evelyn Petersen
Harold Stimmel

BANJO

Olga Wek

SAW

Robert Kimball

CLARINET

Luana Hurd
Wayne Johnston
Emil Vanyi

SAXOPHONE

David Burke
Ralph Cherry
Phyllis Huenefeld

CELLO

William Dutton

TRUMPET

Harry Francis
Louis Gosling
David Harris
June Lundquist
Flora Shafer
Luella Sieg
John Tappero
Andrew Wek

TROMBONE

George Effman
Mary Farrant
Fern Frederick
Dick Johnston
Arthur Phillips
David Phillips
Deloris Schaefer
Thomas Shaw

ACCORDION

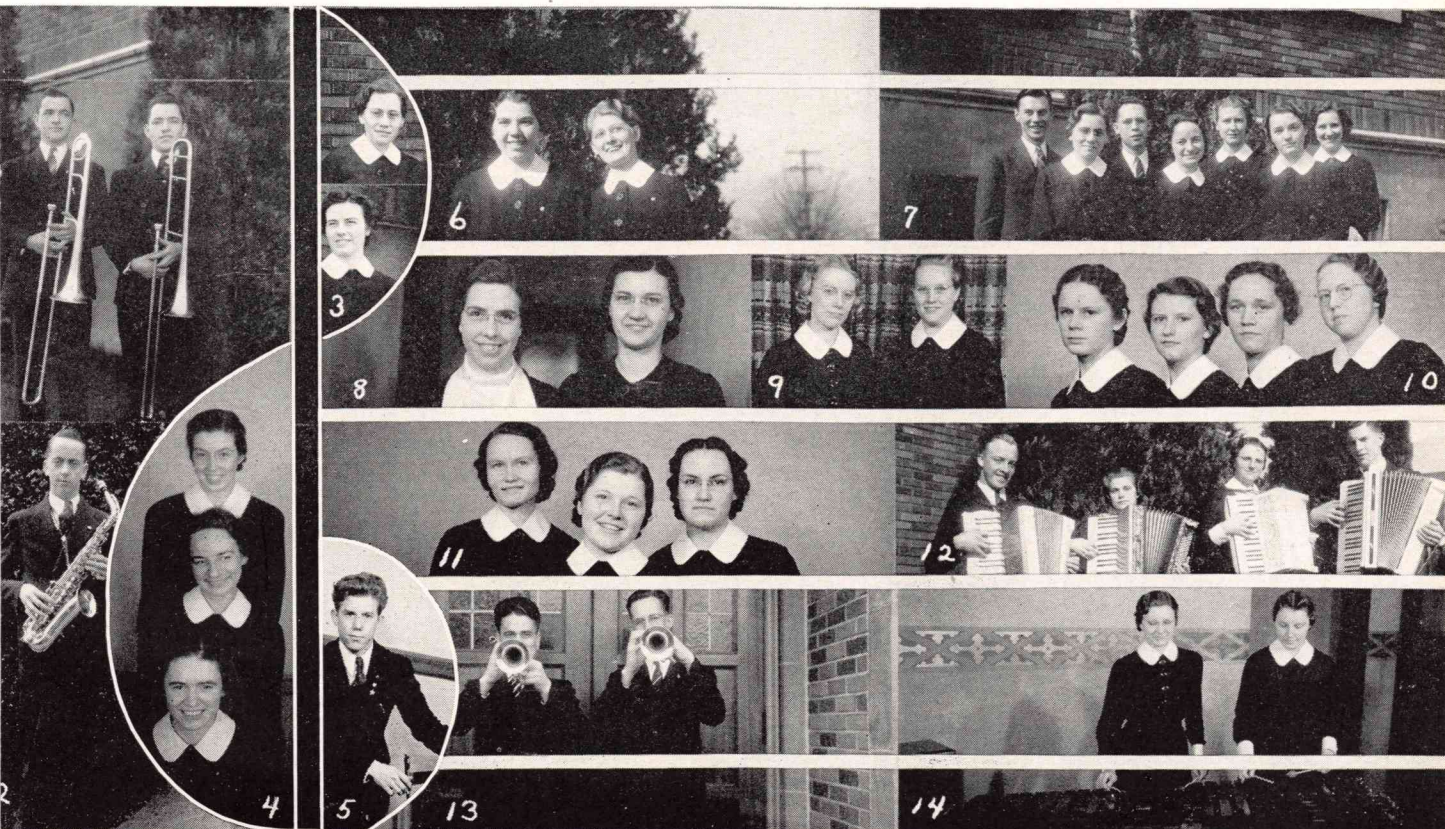
Allen Babcock
Wylie Elder
Wesley Hansen
Hazel Haugland
Marie Johnsrud
Leo Lovin

DRUMS

Leroy Leonard

MARIMBA

Marcella Johnson
LeMartha Stehr





1. The first strains of the theme song swell. 2. Rev. Ness—director of the program. 3. The feature of the broadcast—radio choir. 4. The Word of God goes forth. 5. Rev. Jones brings the message. 6. Our soloist thrills the hearts of the listeners. 7. The choir in action. 8. NBC emblem. 9. Gospel duet. 10. "God bless you! Good night."

R A D I O

As the soft, mellow strains of the studio organ are carried through the microphone and over the ether waves, another Northwest Bible Institute student broadcast has commenced. Reverend Ness steps to the microphone and makes a few brief opening remarks, after which the choir and various musical groups offer a program of sacred music and one of the faculty delivers a short gospel message.

Since this new branch of our school's activity was inaugurated on November 17, 1939, over KJR, the most powerful radio station in the Pacific Northwest, it has proved to be a source of immeasurable inspiration and help to the listening audience. They have testified to this in many letters of appreciation received from such points as Minnesota, Kansas, North Dakota, South Dakota, Idaho, Oregon, Montana, northern Canada, Alaska, and California.

Radio is, without a doubt, the most modern and effective means of spreading the message of the Gospel quickly and efficiently. As the newest channel of N. B. I.'s evangelistic activity, its possibilities are almost unlimited, both to bring a message of cheer and comfort to fellow-Christians and friends of the school and also to carry the Gospel of Jesus Christ to those who would not otherwise hear it. It is the earnest prayer of all those who take part that this student broadcast may continue to be used in a mighty way for the furtherance of His Kingdom.

ANNUAL STAFF

We, of the annual staff, whose privilege it has been to compile the Torchbearer, have had before us a task that has proved to be one of absorbing interest and valuable experience. In a project such as ours both energetic activity and divine guidance are required if the resulting publication is to be what we have striven for. We can recall with satisfaction the many past weeks of laboring together, during which we have found this fact to be a practical truth. As with a runner striving for a goal, we have encountered many obstacles, but perseverance and prayer have proved more than adequate to overcome them.

Now the goal has been reached — the annual is published. We have not only endeavored to introduce the reader to our school, but also to present a spiritual message in an interesting style and acceptable manner. To whatever success we have attained we gratefully acknowledge the help of the Lord, the kindly advice of the faculty, and the hearty co-operation of the student body and friends who have assisted us in the production of the N. B. I. Torchbearer of 1940.

Priscilla Marr,
Assistant Editor

Staff at Work.
Janet West, our expert "Panneeler."

Cornelius Askren,
Associate Editor

Ben Ford
Olga Wek

Jean Grieve,
Editor-in-Chief

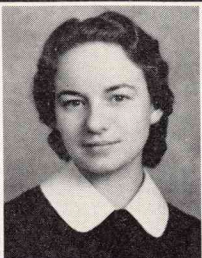
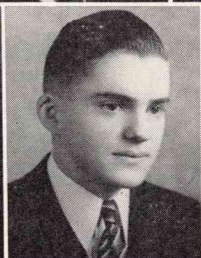
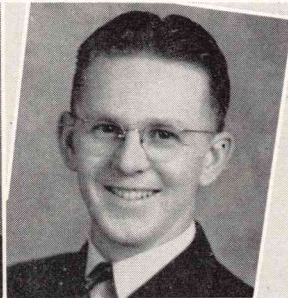
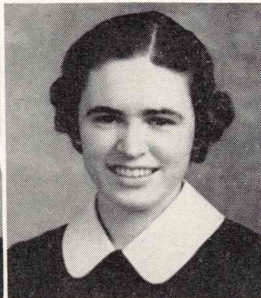
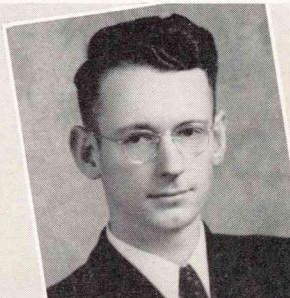
Eunice Frank
Robert Peel

Paul Trulin,
Business Manager

Magnus Udd
Gordon Nickell,
Contributing Artist

John Tappero,
Ass't Business Manager

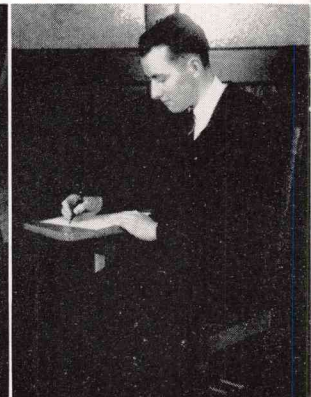
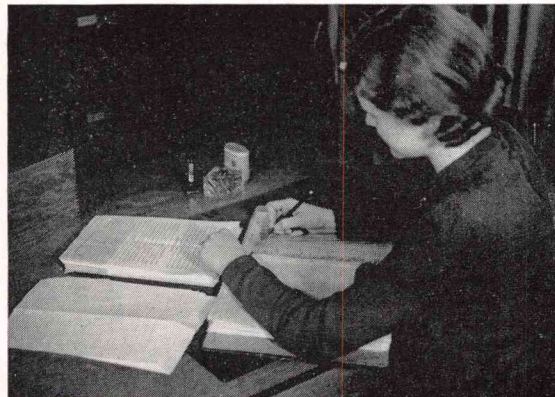
Counting the day's receipts.
The high "Torchbearer" salesmen.



PRACTICAL WORK

One of the most interesting phases of school life, and perhaps most enjoyable to the student, is the opportunity afforded by the practical work department for actual training in Gospel channels. Through the medium of outstation work, the student not only is provided an outlet for his Christian zeal and talents, but he experiences in reality the many situations and problems which he will face in the future upon leaving school. The attitude he takes toward his assignments, the willingness shown in co-operation, and the cheerfulness with which he takes up his duties help to determine what kind of a worker he will be on the field. The importance of practical work is therefore apparent, for it has become instrumental in the development of each student into a successful soul winner.

Throughout the present school year over fifty different places of contact have been opened to the student. The field of service includes training along both pastoral and evangelistic lines. Radio, street, and jail services, slum mission work and hospital visitation have developed the student in the ministry of personal work, and the efforts put forth have been crowned with results that will last throughout eternity.



Janet West, Assignment Director
Leaving on an Assignment

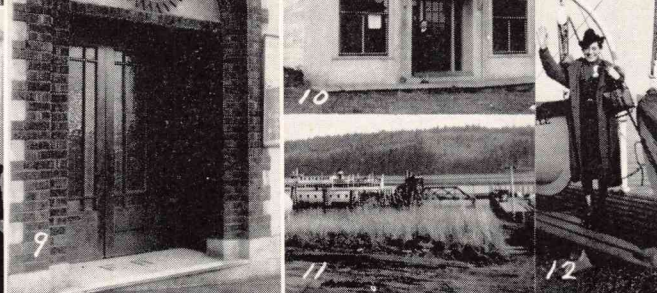
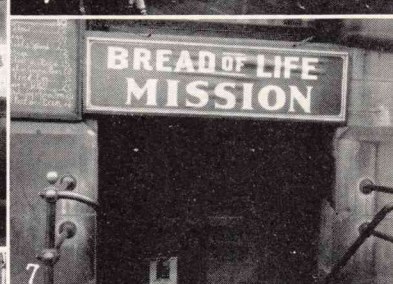
Student completing Weekly
Reports
N. B. I.'s obliging chauffeurs



THE PRACTICAL SIDE OF SCHOOL LIFE



1. Concluding a service at Raymond, Wash.
2. Vancouver assignment homeward bound.
3. Sight-seeing near Vancouver—British Properties.
4. Students gain experience at the Gospel Chapel.
5. "The little Baptist Church," Ballard.
6. Enroute to Vancouver—Canadian Customs.
7. Where both physical and spiritual needs are met.
8. The anti-climax at the Brighton Chapel.
9. The Salvation Army, a familiar entrance for students.
10. Students assist at Port Townsend.
11. Ferrying to service.
12. All aboard for Seattle!
13. An outstation in the Oriental section.



MISSIONARY SOCIETY

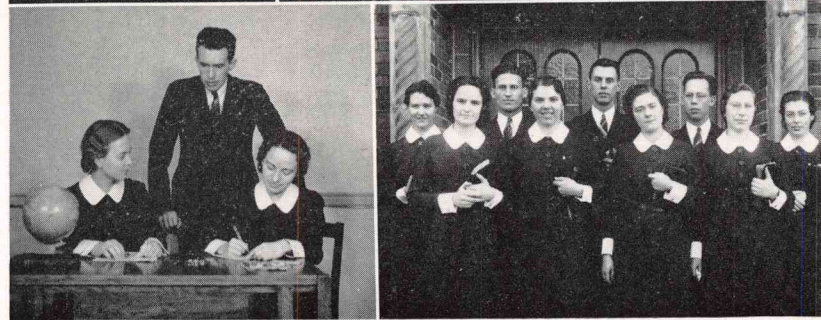
As our school has grown from year to year, we have found that our missionary endeavor has more than kept pace with its development. There was much prayer among the students of N. B. I. in the first few years that God would call and thrust forth many laborers into His great whitened harvest field, and that prayer has been abundantly answered.

This year we have the joy of claiming ten former students as missionaries, who are laboring in at least five different foreign lands. Several other graduates and students anticipate being called to the field soon. This is cause for continued rejoicing and thanksgiving to God.

We feel our added responsibility to pray for these dear ones whom we have known and loved, who are now facing the enemies

of God on the battlefield. Through study, letters, and prayer requests of missionaries we better understand the various needs and are enabled to pray more intelligently, realizing that prayer is the greatest weapon against Satan's strongholds.

Not least in importance is our ministry of giving. This we would not limit to our means, but seek first to give ourselves to God. We know that He will use each consecrated life to spread the Gospel Light to earth's dark corners, and bring glory and honor to His eternal Name.



Ethel Wadelin
President

Irwin Galbraith
Vice-President

Eunice Frank
Secretary-Treasurer

Officers Confer

Group Leaders

MISSIONARY SOCIETY

AFRICA

Magnus Udd, Leader. W. Alexander, C. Allen, N. Baker, J. Barrows, H. Berentsen, L. Collins, B. Connick, T. Cunningham, P. Estep, B. Fenton, G. Furlie, E. Geesey, G. Geesey, C. Gilley, R. Graffe, C. Hall, W. Hall, D. Hanson, M. Harper, R. Hayes, P. Huenefeld, L. Hurd, J. Irby, H. Isaak, L. Isaak, M. Johnsrud, R. Lang, F. Lenker, L. Leonard, A. Lierman, J. Lilly, J. Lundquist, A. Maltbie, P. Olson, N. Palmerton, A. Phillips, D. Phillips, L. Rich, R. Ruff, R. Shamp, L. Starnes, L. Stehr, V. Steiner, F. Thompson, E. Waugh, F. Wood, M. Woods, W. Woods, P. Zaputit, J. Zysset.

PALESTINE AND ARABIA

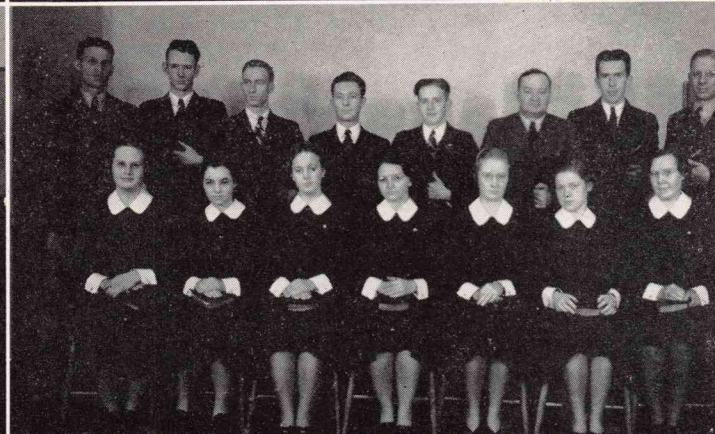
Gertrude Wilkinson, Leader. C. Anderson, J. Armstrong, B. Ford, L. Fosner, R. Fosner, H. Haugland, K. Johns, M. Johnson, V. Kasparie, P. Kellmer, J. Morse, C. Pearson, E. Peterson, D. Rathjen, D. Schaefer, D. Schmude, D. Thompson, H. Thompson, P. Trulin, C. Walker.

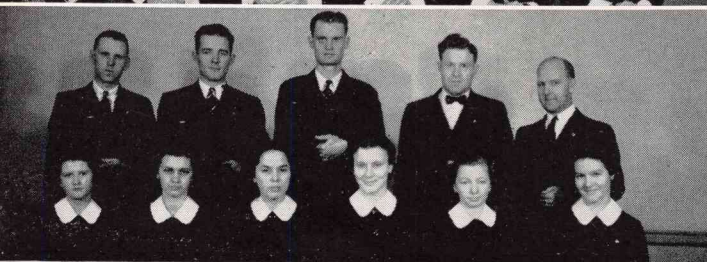
ORIENT

Verna Spencer, Leader. H. Beat, M. Banks, M. Born, V. Bruss, L. Burdick, M. Chesney, V. Dollarhide, W. Dutton, W. Elder, H. Francis, M. Hagen, E. Hansen, G. Heiksen, C. Hines, A. Hitchen, E. Holan, E. Hoskins, P. Indbjo, D. Johnston, H. Kampfer, A. Krell, J. LaCount, O. Ljunghammar, R. Maser, D. McCulley, N. McManus, M. Page, N. Roberts, D. Scheibner, D. Schuster, P. Skjeie, H. Stimmel, A. Vollertson, P. Wakefield, R. Webb.

LATIN AMERICA

Harold Matson, Leader. C. Askren, L. Beale, E. Frank, I. Galbraith, W. Gregg, M. Gustafson, D. Harris, A. Hendricks, H. Hoaland, W. Hoefer, R. Hutton, A. Miller, N. Norman, J. Riddoch, O. Rowe, F. Shamp, K. Stavros, W. Taber, E. Wadelin.





MISSIONARY SOCIETY

ISLANDS OF THE SEA

Louise Fenton, Leader. R. Allen, R. Badten, M. Dressler, A. Friend, K. Gregg, W. Hansen, A. Hayes, M. Hovland, R. Kimball, C. Lanuza, D. Loving, W. Lyon, V. Richards, A. Parsons, E. Tvaruzek.

CANADA

Andrew Wek, Leader. M. Brown, R. Cowper-Smith, W. Cowper-Smith, M. Farrant, J. Friesen, J. Grieve, I. Manson, R. Peel, M. Petersen, M. Richardson, J. Tappero, O. Wek.

ALASKA

Anne Little, Leader. A. Apeland, J. Chandler, F. Davis, R. Johnston, M. Jones, J. Mitchell, E. Olsen, L. Olson, P. Petersen, N. Satterlund, T. Shaw.

INDIA

Priscilla Marr, Leader. F. Chambers, R. Cherry, M. Giesler, L. Gosling, D. James, W. Johnston, V. McElyea, P. Norman, O. Olson, E. Petersen, D. Vanyi, E. Vanyi.

RUSSIA AND EASTERN EUROPE

Hildur Anderson, Leader. A. Badten, F. Gibbons, P. Hines, R. Johnson, L. Lovin, G. Madsen, E. Pister, G. Spain, D. Sieg, L. Sieg, M. Vosper, T. Waag.

AMERICAN INDIAN

Helen Weger, Leader. I. Dye, E. Effman, K. Ellsworth, L. Fenton, F. Frederick, E. Huset, F. Shook, J. Welter.

ALUMNI ASSOCIATION

"Blest be the tie that binds our hearts in Christian love." A large number of young men and women, former students and graduates of the Northwest Bible Institute, constitutes a fellowship known as the Alumni Association. Some of the members are pastors, others evangelists, and several are missionaries in foreign lands. There are those who are engaged in secular occupations and yet active in witnessing for their Lord.

From home and abroad comes news from N. B. I.'s representatives. Sturdy, stalwart Pioneers are faithfully breaking the sod, tilling the soil, and sowing the Seed. Courageous, invincible Conquerors are persistently fighting the good fight of faith, enduring hardness as good soldiers of the cross. Brave, fearless Lifesavers are throwing out the Life line, rescuing the perishing, and caring for the dying. Of these ministering servants it can well be said that God is working with them, confirming His Word "with signs following."

Twilight is stealing over this old world, evening shadows are lengthening, a setting sun is in view, and the members of the Alumni Association are reassured that "the night cometh." The Pioneers will soon have gathered their last sheaf, the Conquerors will soon have fought their last foe, and the Lifesavers will soon have thrown out the Life line for the last time. "The coming of the Lord draweth nigh." With eager anticipation each noble young laborer yearns to hear those words: "Well done, good and faithful servant, enter thou into the joy of thy Lord."

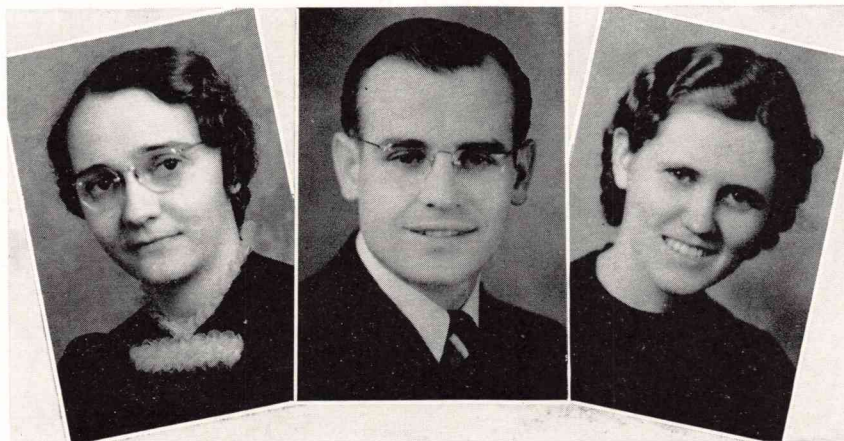
Torchbearers, we welcome you as new members into our Alumni family. In unity there is strength; may we ever be "one in hope and doctrine, one in charity."

ALUMNI OFFICERS

Margaret Knutsson
Vice-President

Velmer Gardner
President

Janet West
Secretary-Treasurer



ON FOREIGN SOIL



Rudy Esperanza's Sunday School, Philippine Islands

Bergman Lee, a "Pioneer" in China

Servillano Obaldo—all aboard for the Philippines!

The Williscrofts—home from Danzig

The Tangens—all ready to go.

"Missions at home and abroad"—Rev. Vogler and Rev. Perkin visit N. B. I.

The Hie Maru prepared for her voyage

Anchors aweigh!

Home ties are severed—"till we meet again."

IN THE HOMELAND

1. Maynard Oss—Pastor at Enumclaw.
2. Bessie Guy—Gospel work in and around Port Angeles.
3. Phil Gaglardi—Pastor at Langlie Prairie, B.C.
4. Genevieve Alexander—Campbell Schoolhouse.
5. Bill McNutt—Pastor at Renton.
6. Maurine and Grace with their assembly at Grandview.
7. Harry and Verna Pennington and baby Gladys.
8. Esther Patey finds opportunity in California.
9. Mary Carnes and Zelma Lontz Stellar.
10. Fixing a "flat".
11. Veeda and Velma's church at Redland.
12. Ruby Montgomery.
13. Violet Nelson.
14. Earl Wilkie pastoring at Metaline Falls.
15. Another "Pioneer"—Leonard Philp.
16. Port Townsend for Christ.
17. Myrtle Low.
18. Camp Meeting—a favorite gathering place.
19. Edriss and Ethel throw out the "life line" at Burns, Oregon.
20. Katharyn Stone—busy at Brighton Chapel.
21. Clara Johnsen, "a Salvation Army lassie."
22. "Mr. and Mrs." Willard Howell.
23. Sherman Williams conquers for Christ in Montana.





NORTHWEST BIBLE INSTITUTE

FRESHMAN

Alexander, William
Armstrong, Jane
Babcock, Allen
Badten, Anna
Badten, Ruth
Baker, Newton
Barrows, John
Beale, Leonard
Born, Margaret
Brewer, Leonard
Brown, Margaret
Chandler, Jane
Cherry, Ralph
Chesney, Margaret
Collins, Loree
Connick, Bernice
Dollard, Vivian
Dressler, Marie
Effman, George
Ellsworth, Kenneth
Estep, Pearl
Fenton, Bonnie
Fenton, Lillian
Fenton, Paul
Fosner, Rena
Frederick, Fern

Friend, Anna Belle
Furlie, Gladys
Geesey, George
Gilley, Cora
Gregg, Kenneth
Hagen, Mabel
Hall, Chester
Hall, Wilma
Haugland, Hazel
Hayes, Alfred
Hayes, Ruth
Heicksen, Gertrude
Hines, Pauline
Hitchen, Alice
Holan, Erna
Hoskins, Eleanor
Isaak, Helen
Isaak, Lorene
Johns, Catherine
Johnson, Eloise
Kellmer, Pauline
Kilmer, Nellie
Kimball, Robert
Krell, Ada
LaCount, Joyce
Lang, Robert

Lanuza, Claudio
Lenker, Frances
Leonard, Ressa
Lierman, Alice
Lilly, June
Ljunghammar, Olga
Lovin, Leo
Loving, Dale
Madsen, Grace
McCulley, Dorothy
McManus, Norman
Mitchell, June
Morse, June
Olson, Leonard
Olson, Otto
Page, Marjorie
Palmerton, Norah
Pearson, Clem
Petersen, Peter
Peterson, Evelyn
Phillips, Arthur
Phillips, David
Pister, Esther
Rathjen, Dorothy
Rich, Lydia
Richards, Violet

Roberts, Norma
Rowe, Orlo
Ruff, Ruth
Schaefer, Deloris
Scheibner, Dorothy
Searl, Oliver
Shafer, Flora
Shamp, Raymond
Shook, Freda
Sieg, Luella
Skjeie, Pauline
Spain, Genevieve
Starnes, Lucille
Stavros, Katherine
Stehr, LeMartha
Steiner, Viola
Stimmel, Harold
Thompson, Dorothy
Tvaruzek, Eunice
Upshaw, Constance
Waag, Thora
Waugh, Earl
Wood, Foster
Woods, Margaret
Woods, Ward
Zysset, John

JUNIOR

Anderson, Carl
Apeland, Agnes
Askren, Cornelius

Beat, Helen
Bruss, Virginia
Burdick, Leona

Burke, David
Chambers, Beulah
Chambers, Florence

Cowper-Smith, Westmore
Cunningham, Tressie
Dutton, William



FACULTY AND STUDENT BODY 1939-40

Dye, Inez
Elder, Wylie
Fenton, Louise
Fosner, Lloyd
Friesen, John
Gibbons, Frank
Giesler, Mildred
Gosling, Louis
Graffe, Ray
Gustafson, Margaret
Hansen, Eva
Harris, David

Hines, Carl
Huenefeld, Phyllis
Hurd, Luana
Huset, Effie
Hutton, Ruby
Indbjo, Pearl
Irby, Jessie
Johnson, Robert
Johnsrud, Marie
Johnston, Dick
Jones, Mildred

Kampfer, Harriet
Lundquist, June
Lyon, Walter
Maser, Rachel
McElyea, Velma
Miller, Allen
Monson, Ira
Morse, Leland
Parsons, Arleon
Petersen, Evelyn
Richardson, Maxine

Riddoch, Jessie
Satterlund, Nils
Schmude, Dorothy
Shaw, Thomas
Sieg, Dorothy
Vanyi, Dorothy
Vanyi, Emil
Vollertsen, Amanda
Wakefield, Phyllis
Weger, Helen
Wek, Olga

SENIOR

Allen, Clare
Anderson, Hildur
Banks, Margaret
Berentsen, Henry
Cowper-Smith, Rosalie
Davis, Frank
Farrant, Mary
Ford, Ben
Francis, Harry
Frank, Eunice
Galbraith, Irwin

Geesey, Emmitt
Grieve, Jean
Hanson, Doris
Harper, Marian
Hendricks, Arlo
Hoefer, William
Hovland, Myrtle
James, Dacie
Johnson, Marcella
Johnston, Wayne
Leonard, Leroy

Little, Anne
Marr, Priscilla
Matson, Harold
Norman, Nancy
Norman, Philip
Olsen, Elsie
Olson, Paul
Schuster, Dorothy
Shamp, Fred
Spencer, Verna
Tappero, John

Thompson, Frances
Trulin, Paul
Udd, Magnus
Wadelin, Ethel
Walker, Chris
Waugh, Edna
Webb, Rose
Wek, Andrew
Welter, Julia
Wilkinson, Gertrude
Zaputil, Phyllis

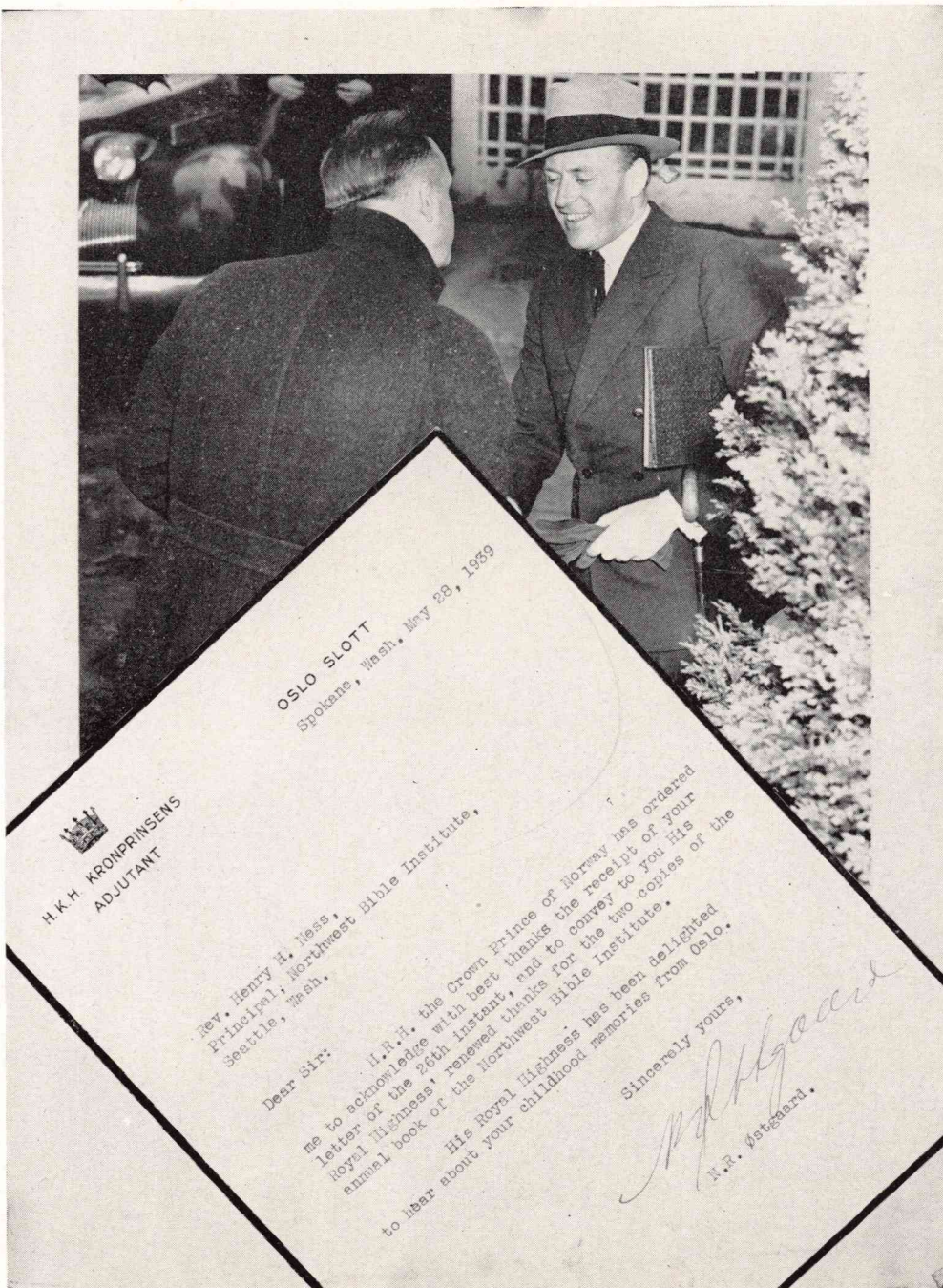
SPECIAL STUDENTS

Allen, Ruby
Emerick, Marguerite
Hansen, Wesley
Hoaland, Helene

Johnson, Delbert
Johnston, Rosalie
Kasparie, Violet
Maltbie, Albert

Peel, Robert
Petersen, Marie
Schubert, Alice
Stohr, Theodore

Taber, Warren
Thompson, Hardy
Vosper, Mary



Norway's Crown Prince Olav Is Presented with
Copies of the N. B. I. Yearbook by Our Principal



Class of '40 Presents . . .

Torchbearers' ROLL

- | | |
|----------|----------|
| 1. | 23. |
| 2. | 24. |
| 3. | 25. |
| 4. | 26. |
| 5. | 27. |
| 6. | 28. |
| 7. | 29. |
| 8. | 30. |
| 9. | 31. |
| 10. | 32. |
| 11. | 33. |
| 12. | 34. |
| 13. | 35. |
| 14. | 36. |
| 15. | 37. |
| 16. | 38. |
| 17. | 39. |
| 18. | 40. |
| 19. | 41. |
| 20. | 42. |
| 21. | 43. |
| 22. | 44. |

45.

AUTOGRAPHS



AUTOGRAPHS



God Bless You,
"TORCHBEARERS" of '40
We Welcome You to the Fields;
"THEY ARE WHITE—ALREADY TO HARVEST"

N. B. J. Alumni Association

VELMER GARDNER, President

MARGARET KNUTSSON, Vice-Pres.

JANET WEST, Secy.-Treas.

Sherman A. Williams, Jr.—Pastor
ASSEMBLY OF GOD
2822 Minnesota Avenue
Billings, Montana

William McNutt—Pastor
ASSEMBLY OF GOD
Renton, Wash.

Harry Pennington—Pastor
GOSPEL MISSION
Marblemount, Wash.

Ernest Francis—Pastor
FULL GOSPEL TABERNACLE
Port Alberni, B. C.

Leonard J. Philp—Pastor
GOSPEL TABERNACLE
410 Main Street
Roundup, Montana

Maurice Petersen—Pastor
ASSEMBLY OF GOD TABERNACLE
Forks, Wash.

Katharyn Stone—S. S. Missionary
HOLLYWOOD TEMPLE
Seattle, Wash.

Bessie Guy—Christian Worker
COMMUNITY CHURCH OF BLYN
Blyn, Wash.

Esther Patey—Evangelist
Ferndale, Wash.

Walter Wheeler—Pastor
FULL GOSPEL TABERNACLE
Spanaway, Wash.

Richard J. Teeter—Pastor
ASSEMBLY OF GOD TABERNACLE
219 South Broadway
Buhl, Idaho

Margaret Knutsson—Church Missionary
HOLLYWOOD TEMPLE
Seattle, Wash.

Maynard S. Oss—Pastor
FULL GOSPEL TABERNACLE
Enumclaw, Wash.

Genevieve Alexander—Christian Worker
CAMPBELL SCHOOL HOUSE
Seattle, Wash.

Zelma Lontz Steller—Christian Worker
BETHEL CHURCH on the HIGHWAY
Montesano, Wash.

Ethel Berglund—Edriss Daugherty
ASSEMBLY OF GOD
Burns, Oregon

Willard Howell—Ass't Pastor
GOSPEL MISSION
Poplar, Montana

Mary Carnes—Evangelist
1020 East Denny Way
Seattle, Wash.

Tune in

HAVEN OF REST

MUTUAL DON LEE BROADCASTING SYSTEM

4:15 - 4:45 P. M. — MONDAY TO FRIDAY

COAST TO COAST — 12:30 - 1:00 P. M. SUNDAY, P. S. T.

First Mate Bob and the Crew of the Good
Ship *Grace* extend their best wishes to
"Torchbearers" Class of '40.

ADDRESS ALL MAIL: HAVEN OF REST, HOLLYWOOD, CALIF.

L
O
V
I
N
G

G
R
E
E
T
I
N
G
S



"T
O
R
C
H
B
E
A
R
E
R
S"

BETHANY TEMPLE

Everett, Washington

Pastor, C. E. BUTTERFIELD

Christian Greetings and Congratulations

Brownstown, Wn.
Pentecostal Assembly
WESLEY H. BANTA, *Minister*

Ellensburg, Wn.
Bethany Pentecostal Church
WESLEY W. FLEMING, *Minister*

Goldendale, Wn.
Assembly of God
VELMER J. GARDNER, *Minister*

Grandview, Wn.
Assembly of God
MAURINE MOSS & GRACE FISHER,
Ministers

Granger, Wn.
Assembly of God
ROLAND BUCK, *Minister*

Kittitas, Wn.
Bethel Chapel Assembly
of God
EUGENE A. BORN, *Minister*

Naches, Wn.
Full Gospel Assembly
of God
EINER O. SMESTAD, *Minister*

T
O
R
C
H
B
E
A
R
E
R
S

C
L
A
S
S

O
F

'
4
O

Prosser, Wn.
Assembly of God
Tabernacle
H. W. MURPHY, *Minister*

Selah, Wn.
Selah Pentecostal Church
A. E. ROBECK, *Minister*

Sunnyside, Wn.
Assembly of God
EVAN H. DAVIS, *Minister*

Toppenish, Wn.
Assembly of God
J. S. EATON, *Minister*

Union Gap, Wn.
Assembly of God
PRESTON WORRELL, *Minister*

Wapato, Wn.
Pentecostal Assembly
of God
E. M. McLAUGHLIN, *Minister*

Yakima, Wn.
Full Gospel Tabernacle
H. L. & ELSIE STENBERG,
Ministers

Yakima, Wn.
First Pentecostal Church
R. F. ASHWORTH, *Minister*

From the Churches and Ministers

of the

YAKIMA VALLEY

Section 6 of the Northwest District Council
of The Assemblies of God

CONGRATULATIONS

"Torchbearers"

Full Gospel Church

4th and E St. N.E.
AUBURN, WASHINGTON
H. W. CROWDER, *Pastor*

GREETINGS

Class of Torchbearers



BELLEVUE ASSEMBLY OF GOD

Bellevue, Washington



Evang. Arne Vick
Rochester, N. Y.

G
R
E
E
T
I
N
G
S

"T
O
R
C
H
B
E
A
R
E
R
S"

"MAY THE FLAME NEVER DIE"

GREETINGS

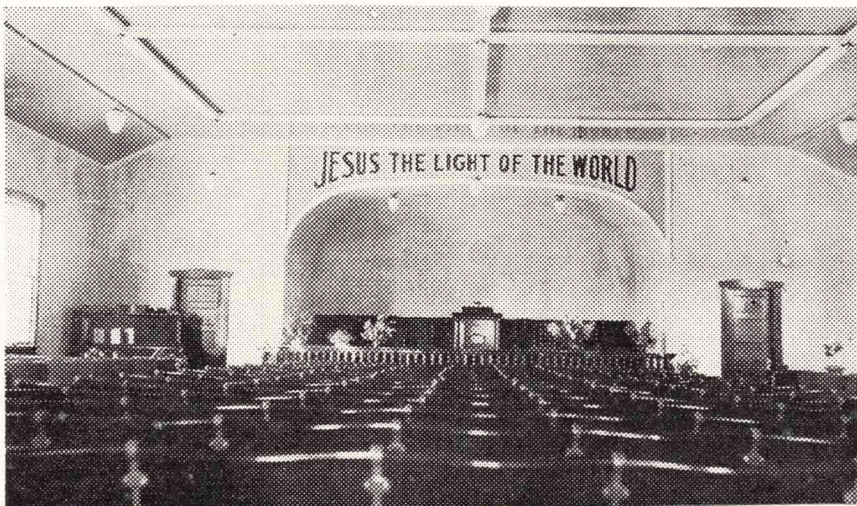
IN

JESUS' NAME

Keep the Torch

Burning for Christ

and Souls



SERVICES:

10:00 A.M. Sunday School
11:00 A.M. Morning Worship
7:30 P.M. Evangelistic
7:30 P.M. Tuesday & Friday
7:30 P.M. Sat., Young People

ASSEMBLY OF GOD TABERNACLE

Ninth and Veneta Streets
BREMERTON, WASHINGTON

KARL LEONARD, *Pastor*

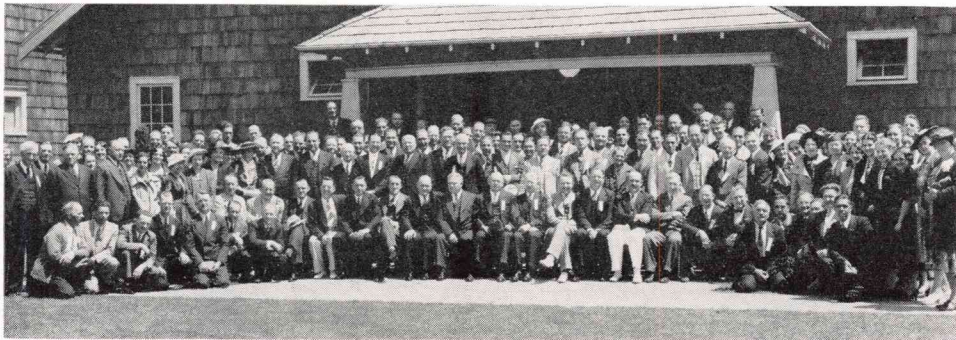
"We Welcome You"

Christian Greetings and Congratulations
 TO THE
TORCHBEARERS CLASS OF '40
 OF THE NORTHWEST BIBLE INSTITUTE
 FROM THE
Northwest District Council
 OF THE ASSEMBLIES OF GOD

Frank Gray.....*Superintendent*
 J. A. Bogue.....*Secretary*
 P. S. Jones.....*Treasurer*

DISTRICT PRESBYTERS

O. C. Ornesen	H. M. Doyle
R. F. Ashworth	Karl Leonard
C. E. Butterfield	D. H. McLaughlin
R. J. Carlson	J. E. Rasmussen
G. L. Coleman	H. J. Steil
C. T. Walberg	



Ministers and Delegates at the 1939 Convention

We Welcome You to
NORTHWEST DISTRICT COUNCIL
 to be held at the First Pentecostal Church,
 310 No. 2nd Avenue, Walla Walla Washington — May 23 and 24, 1940
Come and Enjoy the Fellowship of the Brethren

Best Wishes, "Torchbearers" of 1940

EVANGELIST G. H. MITCHELL

"Be Ready Always"—I PETER 3:15

**THE PENTECOSTAL
TESTIMONY**

A Full Gospel Magazine
Published Twice Month-
ly at Toronto, Canada

\$1.00 per year—3 cents each
in rolls of ten or more.

**Congratulations to the
WINNING SALES GROUP**

HAZEL HAUGLAND, *Leader*

High Salesmen

LEROY LEONARD HAZEL HAUGLAND

God's Speed and Blessing to the
Torchbearers of '40



*The light that shines the farthest
is the brightest at its source.*



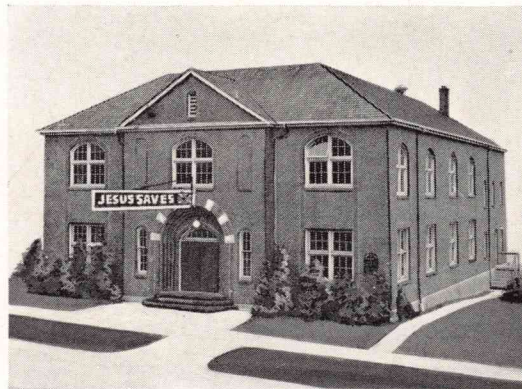
**FIRST PENTECOSTAL
ASSEMBLY**

310 No. 2nd Ave. Walla Walla, Wash.

REV. D. H. McLAUGHLIN, Pastor

**MAY GODLY PROSPERITY FOLLOW THE
GRADUATING CLASS OF 1940**

*God hath
spoken once,
twice have I
heard this;
that power
belongeth
unto God.*



*Also unto thee,
O Lord,
belongeth
mercy: for
thou renderest
to every man
according to
his work.*

PSALM 62:11, 12.

753 North 35th Street
Seattle, Washington

Fremont Tabernacle

THE N. B. I. MISSIONARY SOCIETY

WISHES GODSPEED

to the

TORCHBEARERS OF '40

*"How beautiful are the feet of them that
preach the gospel of peace, and bring
glad tidings of good things."*

ROM. 10:15

ETHEL WADELIN, *President*

IRWIN GALBRAITH, *Vice-President*

EUNICE FRANK, *Secretary-Treasurer*

AFRICA

LeaderMAGNUS UDD

INDIA

LeaderPRISCILLA MARR

LATIN AMERICA

LeaderHAROLD MATSON

ISLANDS OF THE SEA

Leader.....LOUISE FENTON

PALESTINE - ARABIA

LeaderGERTRUDE WILKINSON

ALASKA

LeaderANNE LITTLE

ORIENT

LeaderVERNA SPENCER

AMERICAN INDIAN

LeaderHELEN WEGER

RUSSIA and EASTERN EUROPE

Leader.....HILDUR ANDERSON

CANADA

Leader.....ANDREW WEK

Congratulations to
The Torchbearers



May the gleam of your
torch light the path of
the wayfarer and lead
him to Christ



GREAT FALLS
CHRIST AMBASSADORS

Rev. Homer Rugwell
Pastor

213 - 9th St. No. Great Falls, Mont.

God Bless "THE TORCHBEARERS"
SIXTH AVENUE TABERNACLE
FIRST PENTECOSTAL CHURCH
VANCOUVER, B. C.



CECIL and MOLLIE PERKS, Pastors

CONGRATULATIONS

TO THE
TORCHBEARERS
OF
N. B. I.
1940



Glad Tidings
Temple

So. 527 Spokane St.
SPOKANE, WASH.

FROM
REV. AND MRS.
W. J. LEWIS



THE OFFICIAL BOARD



CHRIST AMBASSADORS
MR. DAVID SCOTT, *President*



THE SUNDAY SCHOOL
MR. SAM SOLEM, *Supt.*

"A WARM WELCOME ALWAYS"

Congratulations

Torchbearers '40



*The Torch of Jesus Christ you have,
Be yours to hold it high;
That men, through you be drawn to Him
And Life receive--to never die.*

*"I will also give thee for a light to the Gentiles, that
thou mayest be my salvation unto the end of the earth."*

The Freshmen Class



Congratulations
to the
Torchbearers
of
N. B. I.

*Ye are the Light
of the World.*

Hollywood Temple

REV. HENRY H. NESS, *Minister*

"the voice of morning worship"

"FOR HE SHALL PUT
A NEW SONG IN MY MOUTH."

—Psa. 40:3

PERSONNEL

SAM NORIN
ANNOUNCER
C. T. WALBERG
EXPOSITOR
PHIL GIBSON
BASS—CLARINET
MAE MINER
SOPRANO
ANINA SORENSEN
CONTRALTO—
PIANO
ROBERT SISTIG
TENOR—VIOLIN
JOHN BANGS
BARITONE
EVERETT
McLAUGHLIN
TENOR
MELVIN HANSEN
ORGANIST

Monday—"Religious
News Reporters"

Tuesday—"True Christ-
ian Experiences of
Others"

Wednesday—"Devo-
tional"

Thursday—"True Christ-
ian Experiences of
Others"

Friday—"Digest of
Christian Thought"

Saturday—"True Christ-
ian Experiences of
Others"

- EACH WEEK DAY
- MORNING FROM
- 9 to 9:30 A.M.
- STATION KELA—
- 1000 WATTS,
- 1440 KILOCYCLES

IN THE
COOL
STILLNESS
OF THE
MORNING—
BEFORE THE
CITY HAS
AWAKENED
FOR THE
COMMERCE
OF THE DAY
—OUT OVER
THOSE IN-
TANGIBLE
LANES OF
SOUND
TRAVEL THE
THROBBING
TONES OF
THE ORGAN
COUPLED

WITH THE VIBRANCY OF THE HUMAN VOICE; EXPRESSING THE SONGS OF REDEMPTION, OF WHICH WE NEVER TIRE. THE DESTINATION OF THESE WORDS OF LIFE IS AS INDETERMINATE AS THE FLIGHT OF A SWALLOW, BUT WITH OBEDIENCE TO THE SCRIPTURAL INJUNCTION—WE CAST OUR "BREAD TO THE WINDS" AND TRUST GOD FOR THE INCREASE. THE "VOICE OF MORNING WORSHIP" GREETES YOU IN THE NAME OF OUR LORD AND EARNESTLY SOLICITS AN INTEREST IN YOUR PRAYERS THAT SOULS MAY BE REACHED FOR TIME AND ETERNITY.

"Lord, in the morning thou shalt hear my voice ascending high;
To Thee will I direct my prayer—to Thee lift up mine eyes."—Watts.



MELVIN HANSEN—A MUSICIAN OF RARE ABILITY BRINGS YOU THE SONGS THAT NEVER GROW OLD—THROUGH THE MEDIUM OF THE PIPE ORGAN.

KELA — CENTRALIA — CHEHALIS
SOUTHWEST WASHINGTON'S ONLY REGIONAL OUTLET FOR
DON LEE-MUTUAL BROADCASTING SYSTEM

Torchbearers

"Preach the Word"
"TO HELP YOU to help others
to know Christ"
is our prayer.

CHRISTIAN SUPPLY CENTER

(Nielsen Book Room)

Room 4455 — 4th Floor

White-Henry-Stuart Bldg.

MAin 3590 — Seattle, Wn.

Bibles, books, tracts, gifts, and S. S. supplies
that set forth the full Gospel.

GREETINGS AND BEST WISHES

from

WESTERN BIBLE COLLEGE

353 Cumberland Ave., Winnipeg, Canada

A thoroughly sound, comprehensive, three-year
course in Doctrine, Systematic Theology, Church
History, Bible by Books, English, Music, Voice
Culture, World Missions, Homiletics, Pastoralia,
Child Study, Vacation Schools, Public Speaking,
Evangelism, Prophecy and kindred subjects.

DR. J. E. PURDIE, Principal,
10 Martello Apts. Winnipeg, Canada

Congratulations "Torchbearers"

MAY ALL YOUR
NATURE FLAME
WITH ZEAL
FOR GOD

Evang.
Wallace G. Ross
Minneapolis, Minn.



GREETINGS

TO

"THE TORCHBEARERS"

from

Rev. & Mrs. O. C. Arnesen
and the

Firth Tabernacle
FIRTH, IDAHO

CONGRATULATIONS

Class of '40

GOSPEL PUBLISHING HOUSE

Publishers of

The Pentecostal Evangel, Christ's Ambassadors Herald,
Literature and Supplies for all departments of the
Sunday School, Religious Books and Bibles



336 West Pacific Street

Springfield, Missouri

CHRISTIAN GREETINGS

"Bread of Life"

STATION KMO 1330 KC
MONDAY - WEDNESDAY - FRIDAY
8:15 A. M. to 8:30 A. M.

From Your Friends at the

PENTECOSTAL TABERNACLE

So. 12th and G. Streets

TACOMA, WASH.

HARRY J. STEIL, *Pastor*

EXTEND CONGRATULATIONS AND BEST WISHES TO
EACH MEMBER OF THE
TORCHBEARERS CLASS OF 1940

SINCERE GREETINGS & HEARTY CONGRATULATIONS
TO "TORCHBEARERS" OF 1940

Oregon Assemblies of God



PRESBYTERY

Front Row (left to right)

ATWOOD FOSTER, *Secretary*, Cottage Grove
LEONARD WESTON, *Medford*
CHAS. G. WESTON, *Supt.*, Salem
CECIL W. AHALT, *Gen'l Presbyter*, Portland
ALAN H. BANKS, *Treasurer*, Albany

Back Row

H. IVAN RYAN, *Toledo*
A. HAROLD PERSING, *Roseburg*
A. H. HOSTVEDT, *Hood River*
LESTER CARLSEN, *General Presbyter*,
LaGrande
E. JAMES CORNWALL, *North Bend*
STERL D. SPIESZ, *Spray*

Keep IT
Burning

GOD'S SPEED
to the

TORCH
BEARERS

*"Bear the LIGHT," comes the Master's call;
"Bring us LIGHT" is the captive's cry.
"Proclaim the LIGHT" HE, the Lord of all,
For the LIGHT, through all eternity, is thine.*

JUNIORS BUILDERS "41"

*"The people
which sat in
darkness saw
a great light."
MATT 4:16.*

CONGRATULATIONS AND BEST WISHES

to the

TORCHBEARERS

CLASS OF 1940

*"... Be blameless and harmless, the Sons of God, without rebuke
in the midst of a crooked and perverse nation, among
whom ye SHINE as LIGHTS in the world;
holding forth the word of life."*

FIRST PENTECOSTAL CHURCH

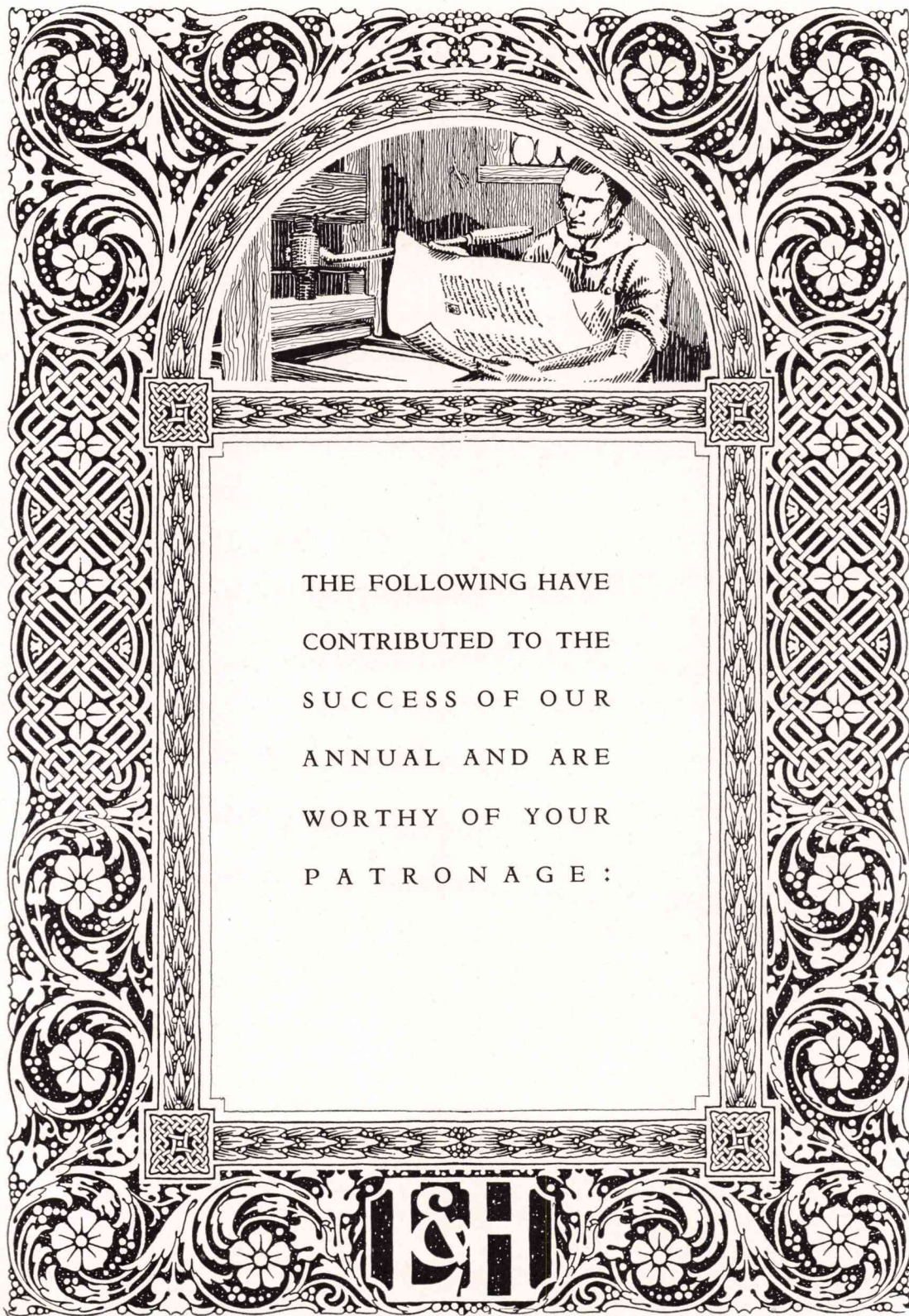
"The Church With the 'Old Time Religion' "

SPOKANE

Corner Spciffard and Post

WASHINGTON

J. E. RASMUSSEN, Pastor



THE FOLLOWING HAVE
CONTRIBUTED TO THE
SUCCESS OF OUR
ANNUAL AND ARE
WORTHY OF YOUR
PATRONAGE :

OUR ROOSEVELT DISTRICT
"THOSE WE PATRONIZE"

DR. E. A. RINEHART
DENTIST

6219 Roosevelt Way

KEnwood 8087

KE. 7085

Call & Deliver

HIGHLAND CLEANERS

Cleaning, Dyeing, Pressing, Repairs, Alterations
Hats Cleaned and Blocked

Rugs - Curtains - Draperies

Roosevelt Way at E. 65th St.

Best Wishes

from

Manville's Ten Cent Store

6504 Roosevelt Way

COMPLIMENTS

of

SEARS, ROEBUCK & CO.

ROOSEVELT STORE

65th & Roosevelt Way

KEnwood 6500



Store Hours: 9:00 A.M. - 5:30 P.M.

Saturday: 9:00 A.M. - 9:00 P.M.

Congratulations

TORCHBEARERS

— and —

Thanks to all N. B. I. students
for their cooperation in making
the Annual photos.



THE WHITE STUDIO

6304 Roosevelt Way

SEATTLE

Herbert Claussen—Mgr.

"Where Quality Is Paramount"

HINSON'S JEWELRY

6507½ Roosevelt Way

We Handle Nationally Known Merchandise:
Shaeffer, Waltham, Hamilton

Free Call & Delivery — KENwood 9744

AURORA DYE WORKS

7503 ½ Bothell Way H. Sakai, Prop.

WOMEN'S WEAR

Quality at Low Prices

LEVINSON'S

6514 ROOSEVELT WAY

MEN'S WEAR

Everything for Music

KENwood 4618

BROBERG MUSIC HOUSE

5517 University Way

Wide End of University Way

Congratulations

to

The Torchbearers Class '40



GENE SWENSEN

SERVICE STATION

5701 Roosevelt Way

WAYFAIR CAFE

North End Popular Family Restaurant

Sunday and Evening Dinners

OUR SPECIAL

50c - 60c - 75c

A. L. BROWN, Prop.

Compliments

BERKMAN'S

Quality

Foods

7501 Bothell Way

Our Specialty—

"Jumbo Malts"

RAINBOW ICE CREAM SHOP

Woodlawn & Ravenna WM. S. HOWELLS, Prop.

Nite Phone KENwood 8339 — Shop KENwood 9753

Six-Way Service & Garage

EXPERT AUTO REPAIRING

Overhauling Our Specialty

ALL WORK GUARANTEED

7809 Bothell Way

SEATTLE

MOEHRING'S SHOES

ELLIS H. MOEHRING, Prop.

1019 East 65th St.

Phone: KENwood 9813

COMPLIMENTS

MYLLENBECK PRINTING CO.


6211 ½ Roosevelt Way — VE 3000

"WE RECOMMEND"

MARYATT ELECTRIC LAUNDRY
Phone GARfield 8800 • DRY CLEANING

S
E
A
T
T
L
E

Paul Tutmarc
 MANUFACTURER
 AND TEACHER
**ELECTRIC
 GUITARS**
 \$3950 UP *All Private
 Lessons*
FREE DEMONSTRATION
 MA. 9770 • 806 PINE
If no answer call VE. 1863
 Evenings by appointment



W
A
S
H
I
N
G
T
O
N

FARMS - HOMES - RENTALS - EXCHANGES
 KEnwood 7735

MARTIN REALTY COMPANY

"SPECIALIZING IN HOMES"

M. Marion Martin, Manager

7511 Bothell Way

SEATTLE

ELIOT 0980

Bank & Office Equipment Co.

OFFICE FURNITURE HEADQUARTERS

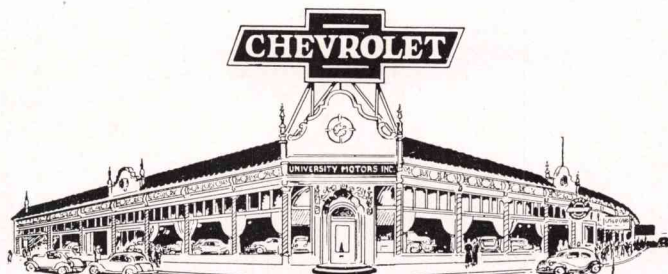
Hilding E. Halvarson

609 Third Avenue

SEATTLE



*Be sure to ask
 for*
**MR. WALTER
 HANSON**



E. 45th & ROOSEVELT WAY

When considering that New or Used
 Car, you can buy with confidence at

University Chevrolet, Inc.

Phone: MEIrose 2131

The RYDING COMPANY

- DUPLICATING MACHINES & SUPPLIES
- DICTATING MACHINES
- STAPLING MACHINES
- PORTABLE TYPEWRITERS
- GENERAL OFFICE SUPPLIES

911 Western Avenue SEATTLE, WASH.

Phone: ELiot 3186

All good wishes to Staff
and Student Body of
NORTHWEST BIBLE INSTITUTE

Sincerely

PACIFIC MUSIC Co.

1411 THIRD AVENUE
SEATTLE, WASHINGTON

FISHING – HUNTING

or any good, clean sport

SEE

FILSON'S

Second at Madison



LARGEST STOCK OF OUTDOOR
CLOTHING IN THE WEST

Sincere Wishes

Class 1940

YOUNGER'S CANDIES

KIRKLAND, WASHINGTON

COMPLIMENTS

of

**BUDDY SQUIRREL'S
NUT SHOPS**

322 Pike -- 809-2nd -- 4336 Univ. Way



LIGHT UP

your face . . . with a Smile!

Light Conditioning chases deep shadows away and relieves eyestrain. A new I. E. S. lamp will provide Better Light . . . Better Sight and help you do Better Home Work.

PUGET SOUND POWER & LIGHT COMPANY

GUARD YOUR SIGHT

Our Service Will Help You Do It

effectively

and at most reasonable cost

COLUMBIAN OPTICAL CO.

1315 Fourth • Ground Floor, Cobb Bldg.

Northwestern National Life Insurance Co.

offers you a safe plan for accumulation of a Life Income. An individual plan can be worked out for you by

MR. IRVING MOORE

420 Fourth Ave. Bldg. SEneca 0866

MElrose 6971

VErmont 4101

Delbert Lee Cox

B.A. MUSIC . . . M.A. EDUCATION

University of Washington

*Instruction given in voice, violin, piano,
and other orchestral instruments.*

Private and Class Lessons.

Fraternity, Class, Lodge Emblems, Rings
and Awards

The Pacific Emblem &
Manufacturing Co.

407 Collins Building

518 - 2nd Ave. at James SEATTLE

*Your Senior Pins and Other Emblem Pins
Are Made by Us.*

MAin 3541

When in the Market for Wearing Apparel, Shoes, Hats, and Furnishings,
remember that you can outfit the entire family on one credit account at



LOWEST PRICES, EASIEST TERMS—ALWAYS

E. R. ERICKSON, *Manager*

ELiot 6391

COMPLIMENTS

OF

WEST COAST CONSTRUCTION CO.

GENERAL CONTRACTORS

Lloyd Building

Seattle, Washington



FINIS

APPRECIATION

The Staff of Torchbearers '40 expresses with gratitude the services of the following:

FACULTY.

STUDENTS.

ADVERTISERS.

JANET WEST.

GORDON NICKELL, Artist.

MR. CLAUSEN, of White Studio.

MR. GOODRICH, of Fairview Photo Studio.

MR. FLINT, of Lowman & Hanford Co., Printers.

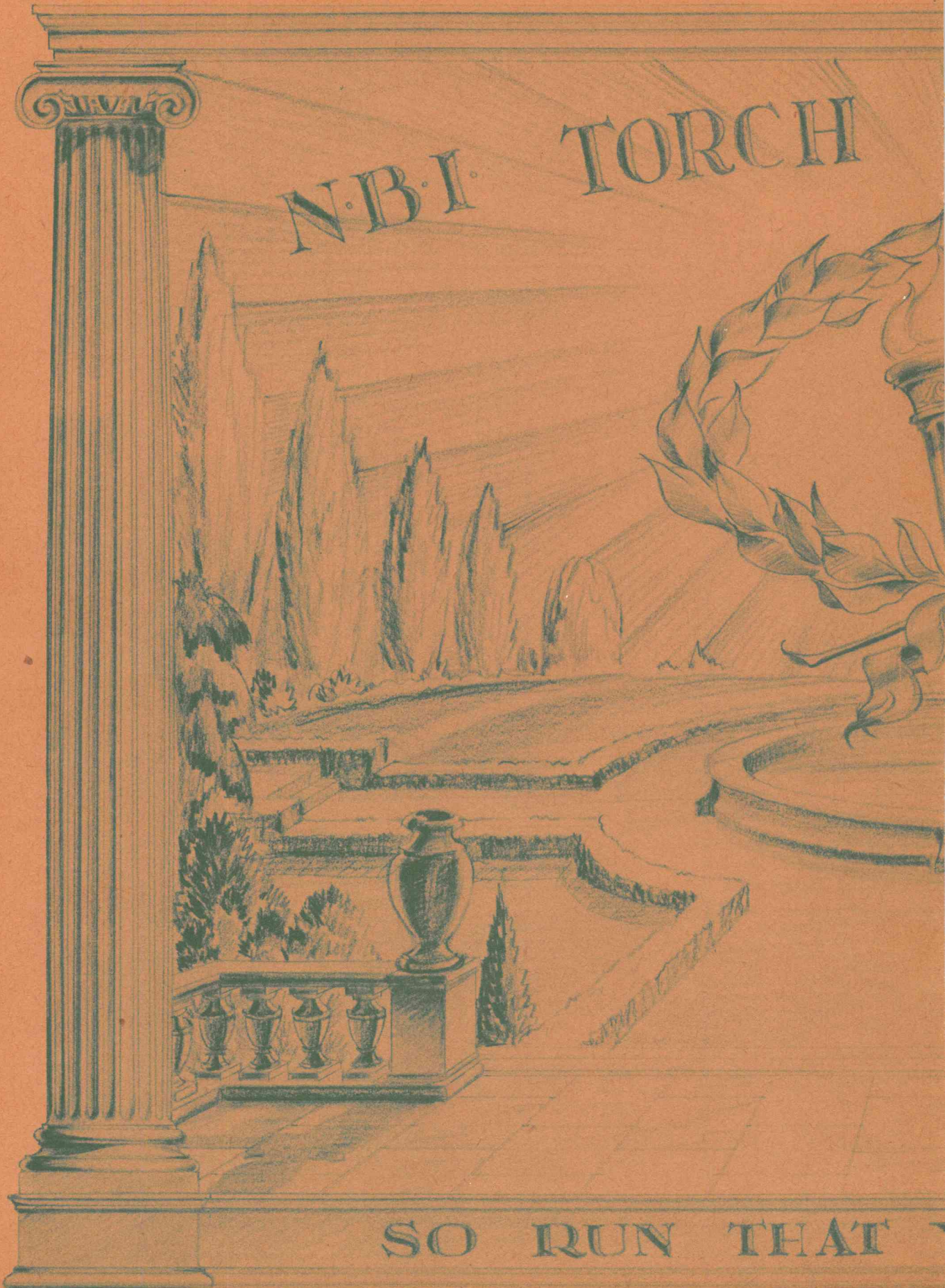
MR. SALISBURY, of

**WESTERN ENGRAVING
and COLORTYPE CO.**

SEATTLE, WASHINGTON
ENGRAVERS

WESTERN ENGRAVED ANNUALS ARE BETTER ANNUALS

N.B.I. TORCH



SO RUN THAT

BEARERS 1940



E MAY OBTAIN

