



STUDENT BULLETIN

FOR THE DAYS OF NOVEMBER 18 - 23, 1994

THIS WEEK IN CHAPEL

FRIDAY, NOVEMBER 18	PROFESSOR LARRY MALCOLM
MONDAY, NOVEMBER 21	MSA/AWS/AMS
TUESDAY, NOVEMBER 22	ASB with Josh Gerbracht
WEDNESDAY, NOVEMBER 23	PRESIDENT DAVIS
THURSDAY, NOVEMBER 24	THANKSGIVING HOLIDAY
FRIDAY, NOVEMBER 25	THANKSGIVING HOLIDAY

INTRAMURAL FOOTBALL CHAMPIONSHIP, top two teams - SATURDAY, NOVEMBER 19, at 1:30 p.m.

MEN'S BASKETBALL - FRIDAY and SATURDAY, NOVEMBER 18 & 19, Lewis-Clark State College TOURNAMENT, in Lewiston, ID. TUESDAY, NOVEMBER 21, NC AT Whitworth College in Spokane, 7:30 p.m. TUESDAY, NOVEMBER 29, NC HOME GAME with SPU, 8:00 p.m.



WOMEN'S BASKETBALL - FRIDAY, NOVEMBER 18, NC HOME GAME with Willamette University, 7:00 p.m. SATURDAY, NOVEMBER 19, NC HOME GAME with Linfield, College, 7:00 p.m. TUESDAY, NOVEMBER 22, NC HOME GAME with Concordia College, 7:00 p.m. TUESDAY, NOVEMBER 29, NC HOME GAME with Big Bend College, 6:00 p.m.

PEP BAND! PLAY AT THE MEN'S AND WOMEN'S HOME GAMES. Practices will start between November 28 to December 2. Depending on the availability of those involved, practice times may vary. If you have any questions, please contact Jenny Skotdal at 6315.



If you are planning to **GRADUATE** in the 1995-96 school year, you must fill out a Graduation Application in the Registrar's Office as soon as possible to have your audit completed for use in Fall 1995 registration.

SCHEDULE OF THE 1994 NC MUSIC DEPARTMENT CONCERTS AND RECITALS: RECITAL III (Intermediate or Advanced) - Tuesday, November 29 at 7:00 p.m. in the chapel.

CHRISTMAS CONCERT - Thursday, December 1, at 7:30 p.m. in the chapel. This program will feature our Concert Choir together with other special Christmas music presented by our music students and faculty.



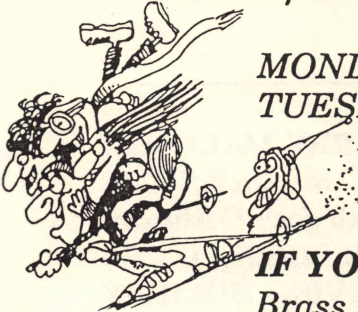
CHRISTMAS INTERIM HOUSING APPLICATIONS now available in the Student Life Office. Must be completed and turned in by December 12.

DON'T FORGET! If you haven't already registered for Spring Semester there is still time to do so before the Re-Applicants (December 1, 1994) and New Students (January 6, 1995) register. There are very few closed classes at this time, but December 1, 1994 is coming and classes will continue to fill. See the Registrar's Office for further details.

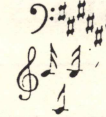
The Academic Computing Center will be closed this Wednesday, November 23 through November 27 for Thanksgiving vacation.

COMPUTER LAB HOURS FOR THIS WEEK ARE:

MONDAY 4:30-6:30 & 8:30-11:00
TUESDAY 4:00-6:00 & 7:30-11:00

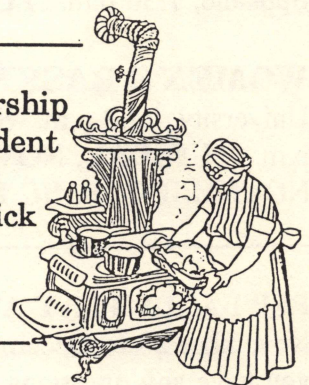
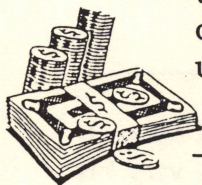


IF YOU ARE A BRASS PLAYER and would like to join the NC Brass Ensemble, please contact Ted Cory at 821-1841 or Professor Melidona at 5278.



PLEASE NOTE: As per College policy, "All tuition, fees, long-distance phone charges, rent, fines, and room and board charges must be paid in full in order to take final exams". (College Catalog, pg. 130)

ALPHA DELTA KAPPA ZETA CHAPTER is offering a scholarship for \$200 toward the purchase of teaching material for female student teachers. If you are currently or planning to do student teaching during this school year stop by the Financial Planning office to pick up an application. The deadline is January 15, 1995.



HEY SENIORS! TOMORROW NIGHT, November 19. . . . Lets go bowling!! Take a study break & join us at 7:00 p.m. **QUESTIONS,** call Denise Deatherage at 6338.

NOTES FROM THE LIBRARY: The library will close at 5:00 p.m. Wednesday, November 23, for the Thanksgiving Holiday Weekend and resume normal hours Monday, November 28, at 7:30 a.m. **REMEMBER,** You are responsible for knowing the due date of any library materials you have borrowed and returning or renewing our material on or before that date.



FOR THE 1995/96 SCHOOL - RA APPLICATIONS AND/OR SMALL GROUP APPLICATIONS are available now in the Student Life Office, your Resident Director, or Mike Nosser (he's in the Pecota Student Center).

Thanksgiving

The cafeteria has requested that a menu not be published this week. Questions, call Dan Pimm in the cafeteria at 5285.