

HURST LIBRARY, NORTHWEST UNIVERSITY

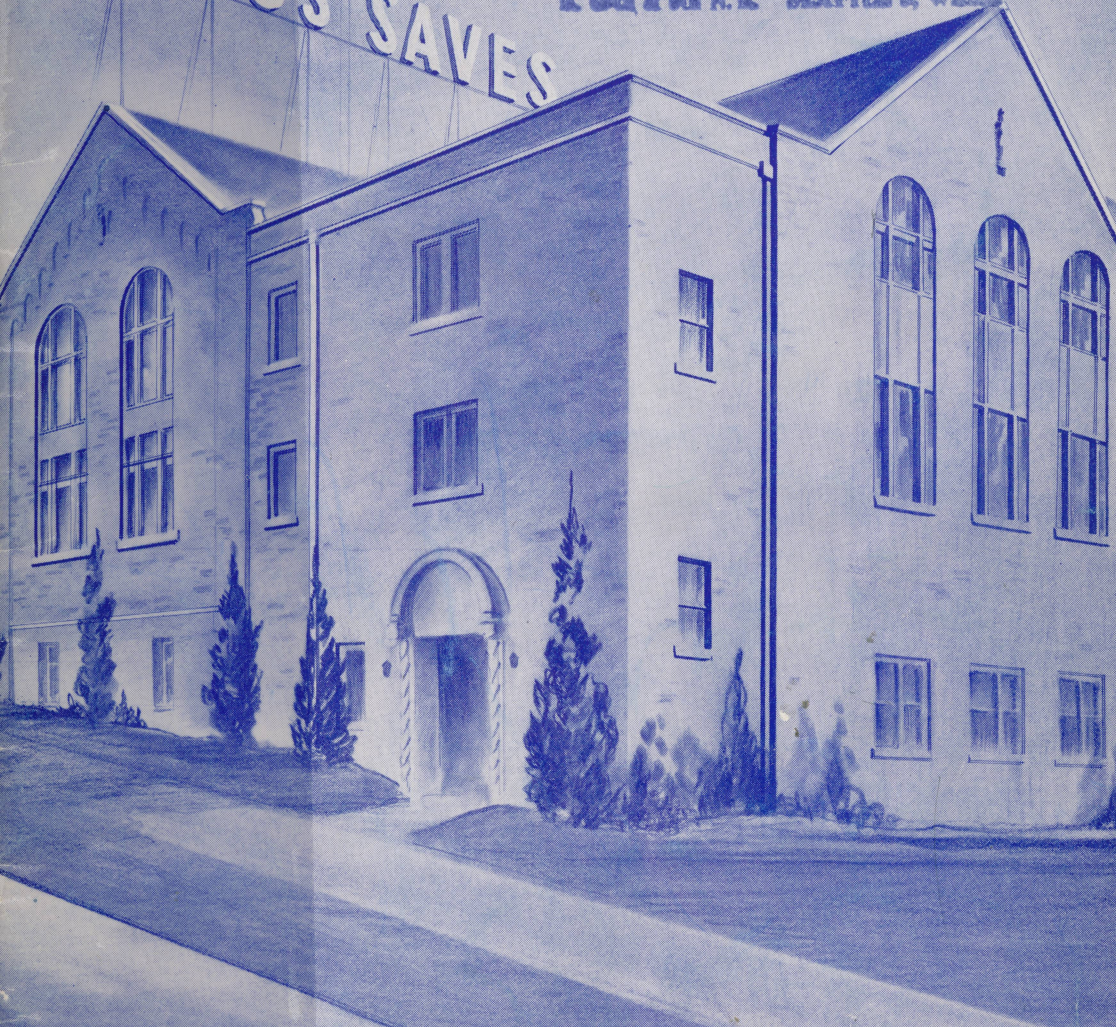


3 0579 00372 3837

College

Property of Library
NORTHWEST BIBLE COLLEGE
R. 22 & 9th N.E. SEATTLE 5, WASH.

JESUS SAVES



Archives

LD

4013

.N67

A22

1950-1951

NORTHWEST BIBLE COLLEGE

ANNUAL CATALOG

1950-51

Archives

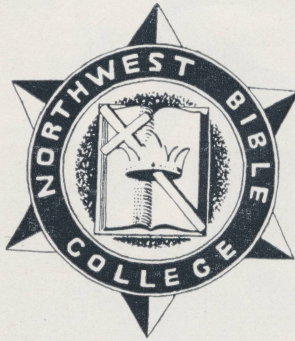
378.797 N8792a

32673

Northwest Bible College - Annual catalog
1950-1951

Calendar 32673

SEVENTEENTH ANNUAL BULLETIN



Northwest Bible College

East 69th and 8th Avenue Northeast

SEATTLE 5, WASHINGTON



REV. C. E. BUTTERFIELD
President

Calendar 1950-51

AUTUMN QUARTER

Registration	September 5-9
Class Instruction Begins.....	September 11
Faculty Reception of New Students.....	September 13
Matriculation	September 15
Last day to register with late fee or to add a course	September 25
Last day to drop a course without receiving "F" if unsatisfactory	October 6
Thanksgiving Recess Begins, 12:30 p.m.....	November 22
Thanksgiving Recess Ends—8:00 a.m.....	November 27
Class Instruction Ends.....	November 30

WINTER QUARTER

Registration.....	November 27 to December 1
Class Instruction Begins.....	December 4
Last Day to register with late fee or to add a course.....	December 11
Christmas Recess Begins, 12:30 p.m.....	December 21
Christmas Recess Ends, 8:00 a.m.....	January 3
Last Day to drop a course without receiving "F" if unsatisfactory	January 3
Holiday, Washington's Birthday.....	February 22
Class Instruction Ends.....	March 8

SPRING QUARTER

Registration	March 5-9
Class Instruction Begins.....	March 13
Last Day to register with late fee or to add a course.....	March 20
Easter Holiday Begins 12:30 p.m.....	March 23
Easter Holiday Ends 8:00 a.m.....	March 27
Last Day to drop a course without receiving "F" if unsatisfactory	April 6
Spring Vacation Begins 12:30 p.m.....	April 24
Spring Vacation Ends 8:00 a.m.....	April 30
Junior-Senior Banquet	May 9
All School Picnic.....	May 18
Baccalaureate	June 3
Class Night	June 5
Commencement	June 6

Table of Contents

Administrative Boards	5
Faculty Committees	5
Faculty	6, 7
General Information	8 to 14
History	8
Objectives	9
Accreditation	10
Location	11
Activities	11
Library	12
Equipment	13
Bookstore	13
Alumni	13
Publications	13
The Living Endowment Fellowship	14
Financial Information	15
Tuition and Fees	15
Refunds	15
Room and Board	15
Information for Veterans	15
Work Opportunities	15
Academic Information	16 to 18
Requirements for Admission	16
Application Procedure	16
Registration Procedure	16
Withdrawals	17
Incompletes	17
Student Classification	17
Academic Load	17
Grading System	18
Graduation Requirements	18
Honors	18
Curricula and Courses	19 to 22
Requirements for Diploma and Degree in Theology	19
Requirements for Diploma and Degree in Missions	20
Requirements for Diploma and Degree in Christian Education	20, 21
Requirements for Diploma and Degree in Music	21
Requirements for Diploma From E. T. T. A.	22
Courses of Instruction	23 to 26
Theological Course	23
Missionary Course	24
Christian Education Course	25
Music Courses	26
Description of Courses	27 to 34
Student Roster	35 to 37

Board of Directors

Rev. Frank Gray, *Chairman*
Rev. R. F. Ashworth
Rev. J. A. Bogue
Rev. W. H. Boyles
Rev. C. E. Butterfield
Rev. R. J. Carlson
Rev. D. H. Fee

Rev. R. E. Mader
Rev. W. F. Morton
Rev. J. O. McGahey
Rev. D. L. McLaughlin
Rev. M. S. Oss
Rev. F. W. Ridout
Rev. E. R. Scratch

ADMINISTRATIVE COMMITTEE

Rev. W. H. Boyles
Rev. C. E. Butterfield
Rev. D. H. Fee

Rev. Frank Gray
Rev. J. O. McGahey
Rev. E. R. Scratch

ADVISORY BOARD

Rev. Oscar Arnesen
Rev. Atwood Foster

Rev. Frank Gray
Rev. Currill Muirhead

OFFICERS AND STAFF

Rev. C. E. Butterfield.....*President*
Rev. E. V. Bronson.....*Dean*
Mrs. Mollie Perks.....*Dean of Women*
Amos D. Millard.....*Registrar*
Jeannette Finch.....*Assistant Registrar*
Yvonne Altura.....*Bookkeeper*

FACULTY COMMITTEES

ADMISSIONS: C. E. Butterfield, E. V. Bronson, A. D. Millard
CATALOG: R. W. Bishop, E. V. Bronson, L. S. Despain, A. D. Millard
ACADEMIC AFFAIRS: E. V. Bronson, R. W. Bishop, S. L. DeSpain
RADIO: D. L. Cox, R. W. Bishop
CHRISTIAN SERVICE: A. S. Ellis, R. B. Tangen, M. Perks, J. Finch
LIBRARY: R. W. Bishop, Yvonne Altura, M. Williams
STUDENT LIFE AND DISCIPLINE: E. V. Bronson, M. Perks,
S. L. DeSpain, A. Lopas
STUDENT GUIDANCE: A. S. Ellis, M. Perks, S. L. Despain, D. L. Cox,
R. B. Tangen

Faculty

C. E. BUTTERFIELD, *President*

Ordination, Assemblies of God, 1928; Pastor, 1926-49; Presbyterian, Northwest District Council of Assemblies of God, 1931-49; Instructor, Northwest Bible College, 1934-35; President, Northwest Bible College, 1949-50; Member, Board of Directors, 1934-50.

EUGENE V. BRONSON, *Dean*

Instructor in Theology and Apologetics, University of Illinois, 1900-1904; Garrett Bible Institute (M. E. Theological Seminary) 1904-1907. B.A., Northwest Bible College; Ordination, Methodist Episcopal Church, 1907; Pastor, M. E. Church, 1909-1925; U. S. Army Chaplain, 1917-19; Instructor, Glad Tidings Bible Institute, 1925-26; Principal Berean Bible Institute, 1930-34; Principal, Southern California Bible College, 1934-36; Instructor, Northwest Bible College, 1937-50; Dean, Northwest Bible College, 1949-50.

C. C. BEATTY, *Dean Emeritus*

Northwest Bible and Training School, 1903; A. H. University, Greensboro, North Carolina, 1914; Ordination, Northern Baptist Convention, 1902; Evangelist and Pastor, 1901-30; Superintendent, Bethel Society, Duluth, Minnesota, 1918; Field Superintendent, North Central District, Assemblies of God, 1928-30; Dean, North Central Bible Institute, 1930-33; Dean Northwest Bible College, 1934-49; Dean Emeritus, 1949-50.

MOLLIE J. PERKS, *Dean of Women*

Church of England School, Malvern, England; Public School Teacher seven years, England; Pastor and Evangelist, 1922-49. Dean of Women, Northwest Bible College, 1949-50

YVONNE ALTURA

Instructor in Spanish and French, Commercial Institute, Rome, Italy, 1938; University of Rome, Italy, 1941-44; Cambridge University, Rome, Italy, 1945-47; Diploma, Northwest Bible College, 1950; University of Washington, summer 1948, 1949; Instructor in Spanish, Northwest Bible College, 1948-50.

RICHARD W. BISHOP

Instructor in Old Testament and History, Diploma, Central Bible Institute and Seminary, 1938; B. A. Taylor University, Upland, Indiana, 1941; Graduate Work for Ph.D., University of Washington, 1943-49; Ordination, Assemblies of God, 1943; Evangelist and Pastor, 1941-50; Instructor, Northwest Bible College, 1945, 1947-50.

DELBERT L. COX

Instructor in Music, Seattle Pacific College, 1929-30; B.A., University of Washington, 1933; M.A., University of Washington, 1935; Graduate work for Ph.D., University of Washington, Columbia University; Instructor, Northwest Bible College, 1934-50.

S. LELAND DeSPAIN

Instructor in Psychology and English, Chillicothe Business College, Chillicothe, Missouri, 1928-29; George Washington University, 1932-33; A.B., Seattle Pacific College, 1948; Instructor, Northwest Bible College, 1949-50.

ALLAN S. ELLIS

Instructor in New Testament and Greek, Mill Hill College, London, 1911; Business College, 1912; Ordination, The Bible Institute of British Columbia, 1925; Public School Teacher, Canada, 1914, 1918; Evangelist and Pastor twenty-six years; Instructor, The Bible Institute of British Columbia, 1925-26; Instructor, Northwest Bible College, 1944-50.

ADELINE LOPAS

Instructor in Science, Diploma, Everett Junior College, 1946; Diploma, Everett General Hospital, 1946; R.N., State of Washington, 1946; Instructor, Northwest Bible College, 1949-50.

AMOS D. MILLARD, *Registrar*

B.A., Northwest Bible College, 1949; Registrar, Northwest Bible College, 1949-50.

ROBERT B. TANGEN

Instructor in Missions, Racine School of Accounting, 1935; Diploma, Northwest Bible College, 1939; College of Chinese Study, Peking, China, and Philippine Islands; University of Washington, 1945; Missionary to China, 1940-45, 47-49; Instructor, Northwest Bible College, 1949-50.

MAXINE WILLIAMS

Instructor in Christian Education, Diploma, Northwestern Schools, Minneapolis, Minnesota, 1934; Teacher's Certificate, Valley City State Teacher's College, 1947; B.A., Seattle Pacific College, 1950; Pastoral Work, 1934-37; Sunday School Representative, North Dakota, 1942-44; Public School Teacher, 1944-45; Instructor, North Central Bible Institute, Minneapolis, Minnesota, 1946-49.

MILDRED ZOPPELT

Instructor in Music, Diploma, Central Bible Institute and Seminary, 1947; A.B. in Music Theory, Seattle Pacific College, 1950; Private Instructor in Accordion, Northwest Bible College, 1949-50.

General Information

The Northwest Bible College is a theological school for the training of ministers, missionaries, teachers and Christian workers. It is operated under the supervision of the Northwest District Council of the Assemblies of God.

HISTORY

A knowledge of the history of the Northwest Bible College will inspire the student to greater faith and help him to appreciate the benefits to be derived from the training offered by the school.

Prior to the opening of the school, the need for such an institution had been felt throughout the Northwest District for some time. Much prayer was offered unto God by the brethren, and several efforts were made to establish a school.

It was because of the faith and vision of the first president, Dr. Henry H. Ness, that Northwest Bible Institute came into existence. It was only a short time after he had accepted the pastorate of Hollywood Temple that the Lord laid on his heart the need for training young people for the Lord's service and gave him a vision of Spirit-filled young men and women, thoroughly trained in the Word of God, going forth to the uttermost parts of the earth proclaiming the gospel of Christ.

Dr. Ness presented the need to the Board of Hollywood Temple and received its endorsement for housing such an institution. He conferred with Rev. Samuel Swanson, District Superintendent at that time, who requested that he present the proposition to the Northwest District Council in session at Centralia, Washington. The offer was accepted, and on October 1, 1934, Northwest Bible Institute, under the leadership of Dr. Ness, became a reality.

Eighteen students were present at school on the opening day, but by the close of the first year forty-eight had enrolled. The approval of the Lord was upon the school from the beginning, and the Holy Spirit was poured out upon the student body in an unusual way.

It was because of the sacrifice of the faculty that the school was made possible in those first few years of its existence. Many of them served with little or no salary. God rewarded their efforts, and the school grew in numbers and influence each year. At the close of the third year, when the first class was graduated, the school had an enrollment of 222. Since that time the school has made remarkable progress under God's blessing.

In the fall of 1947 a fourth-year course was added to the Institute, and the school began operating on a collegiate level. Fourteen students were graduated with a Bachelor of Arts Degree in Religious Education in the first class of 1948.

In January 1949, Dr. Ness resigned from the school, and Rev. C. E. Butterfield, pastor of Bethany Temple in Everett, was appointed the second president. Also, an executive committee, composed of the President, the District Superintendent, and four members of the Board of Directors, was appointed to aid in the administrative affairs of the school.

Because Northwest Bible Institute has been operating on a collegiate level for the past two years, the Board of Directors voted at the District Convention in June, 1949, to change the name to Northwest Bible College.

Graduates of NBC are scattered to the four corners of the earth. There are seventy-five on the foreign field and hundreds in the homeland who are proclaiming the gospel of Christ. Some have laid down their lives for the Lord; others have suffered hardships for His Name's sake. Victorious reports come from the various fields of labor of the blessing of the Lord upon their consecrated effort. Truly the vision and sacrifice of the first president and his co-workers were not in vain. God has crowned them with blessing.

The blessing of the Lord has been upon Northwest Bible College in a marked way from its inception, and thus it is with confidence that we look forward to the future knowing that "He which hath begun a good work will perform it until the day of Jesus Christ."

OBJECTIVES

Northwest Bible College believes that it is possible to combine sound scholarship and vital Christian living. Therefore, its entire curriculum has as its objective the realization of this purpose.

The specific aims of the College are:

- (1) To offer a thorough course of instruction in God's Word to all students so that each one will have studied by the time of his graduation every book in the Bible.
- (2) To organize the curriculum of study in such a way that each student will have an introduction to the basic fields of learning, such as language, literature, history, and science, as well as courses of a more specialized nature.
- (3) To help students form wholesome intellectual, social, and spiritual attitudes that they may be better prepared for college life, for citizenship in a democracy, and for effective Christian service.
- (4) To train pastors and evangelists by giving ministerial students suitable courses of instruction and opportunity for actual ministry.
- (5) To foster missionary interest and to help missionary candidates prepare for their fields of calling.
- (6) To provide training in Christian education for young men and women in order that they may be properly qualified either to engage full time in Sunday School and youth work, or to return to their home churches and become active and efficient lay workers.
- (7) To provide a complete course of instruction and adequate practical experience for those who desire to develop their musical talents or to devote their lives to the ministry of music.
- (8) To assist those who desire to prepare for the chaplaincy, for teaching, for nursing, and for other types of occupation and service.

- (9) To encourage all students to be filled with the Holy Spirit, to live consistent Christian lives, and to lead others to Christ.
- (10) To regulate the academic and spiritual life of the school in such a way that the Northwest Bible College will make a distinctive contribution to education and to the cause of Christ.

ACCREDITATION

Northwest Bible College is provisionally accredited by the Accrediting Association of Bible Institutes and Bible Colleges, which met in Chicago, October, 1948.

It is affiliated with the Evangelical Teacher Training Association, Chicago, Illinois.

It is accredited by the Educational Department of the General Council of the Assemblies of God, Springfield, Missouri.

It is approved by the Department of Justice (Immigration and Naturalization); by the Headquarters of the Selective Service System; and as an educational institution for education or training under Veterans' Readjustment Act, Public Law 346, 78th Congress (G.I. Bill).



*Panoramic view of down-town Seattle with Mount Rainier
in the background*

LOCATION

Northwest Bible College is located near beautiful Green Lake in the residential northeast section of Seattle. The quiet atmosphere and pleasant surroundings make it ideal from both the spiritual and natural standpoint. Seattle's three lakes, forty-four parks, and other scenic centers, offer varied opportunities for wholesome recreation. Nearby shopping districts and its proximity to transit systems provide excellent positions in many fields of labor. The University of Washington and other prominent colleges are located in Seattle where students may take special work in addition to that which is offered by this college.

Seattle is a city of unusual beauty located on the shores of beautiful Puget Sound between the Olympic mountains on the west and the Cascades on the east. It is the Gateway to Alaska and the nearest United States port by sea or air to the Orient. Seattle is not only an ideal place to visit but a wonderful place to live: Altitude—sea level to an elevation of 450 feet. Health—one of America's healthiest cities. Climate—as near ideal as can be found anywhere. The average temperature in winter is 41 degrees, and in the summer, 63 degrees. The city's cosmopolitan area of 73.2 square miles embraces a population of about 500,000 people. Seattle is the largest city of its age in the world.

ACTIVITIES

The Northwest Bible College has included in its program such activities as will develop the student spiritually and socially.

CHAPEL: Every morning the students gather for a devotional service of prayer, praise, and the reading of God's Word. From time to time outstanding Christian leaders and speakers address the student body. Daily attendance is required of all students.

MISSIONARY BANDS: Interest in missions is stimulated by praying for, giving to, and serving in a practical way the needs of the missionaries. The missionary bands are held once each week, and students may join the group of their choice.

STUDENT SERVICE: One night a week is set aside for a service which is conducted by the members of the student body. All students are required to attend the service.

GOSPEL TEAMS: Students are given opportunity to serve in a practical way by means of gospel teams. Requests come from churches and religious organizations in Seattle and vicinity for students to participate in services, teach Sunday School classes, lead song service, speak in youth meetings and special services, and render vocal and instrumental numbers.

FACULTY RECEPTION OF NEW STUDENTS: An informal gathering is held on Wednesday evening following the opening of school for the purpose of welcoming the new students and introducing them to the faculty and other students.

MATRICULATION: It has been traditional to hold a service on the first Friday night following the opening of school formally to start the new school year. Officials and ministers of the District, alumni, and friends of the school join with the students in this special service.

JUNIOR-SENIOR BANQUET: A Wednesday evening in the spring of the year is set aside for this special function when the Juniors are host to the Seniors.

ALL-SCHOOL PICNIC: Another annual affair which is attended by faculty and students is the all-school picnic which is held one Friday during the spring quarter.

SPORTS: Gymnasium facilities and athletic fields are available to the students where they may participate in all types of sports and physical culture. Students should bring their own physical education clothing.



LIBRARY

The constantly growing library of Northwest Bible College now contains over 5,000 volumes. The books are classified according to the Dewey Decimal system and are related in subject matter to the courses of instruction given in the school, in addition to other books of general interest. Also, a number of carefully selected periodicals are received regularly and are accessible to both faculty and students.

In addition to the college library, students have ready access to the Green Lake Branch of the Seattle Public Library which is located just a few blocks away and which contains 20,000 volumes, the University of Washington Library, 611,000 volumes, and the Seattle Public Library, 411,000 volumes.

EQUIPMENT

Bus. The associated student body of the college owns a 30-passenger International bus which is used to transport the choir and orchestra to their various engagements; it is used to transport student groups and gospel teams to the downtown missions and other places where student Gospel services are conducted; it is also used for student outings and social activities.

Recording Machine. The college owns a wire-recording machine which is used in connection with the speech classes and musical groups.

Transcription Machines. The school owns two machines which are used in the language classes for the transcribing of records. The school also has a library of recordings in the French and Spanish languages.

Musical Instruments. From time to time the school has purchased instruments for the use of students participating in the orchestra and other instrumental groups. Further purchases of instruments will be made this fall.

Religious Visual Aid Equipment. The school owns two projectors—S.V.E. Instructor and a Stereopticon slide projector together with equipment and materials for making slides. This equipment is used in connection with the course in Religious Visual Aids.

BOOKSTORE

A bookstore is maintained by the College where students may purchase books and supplies. A discount is given to students on all textbooks.

PUBLICATIONS

The HANDBOOK is published by the College each year, and a copy is given to each student at the beginning of the autumn quarter. It contains information regarding the facilities, curriculum, and rules and regulations of the school.

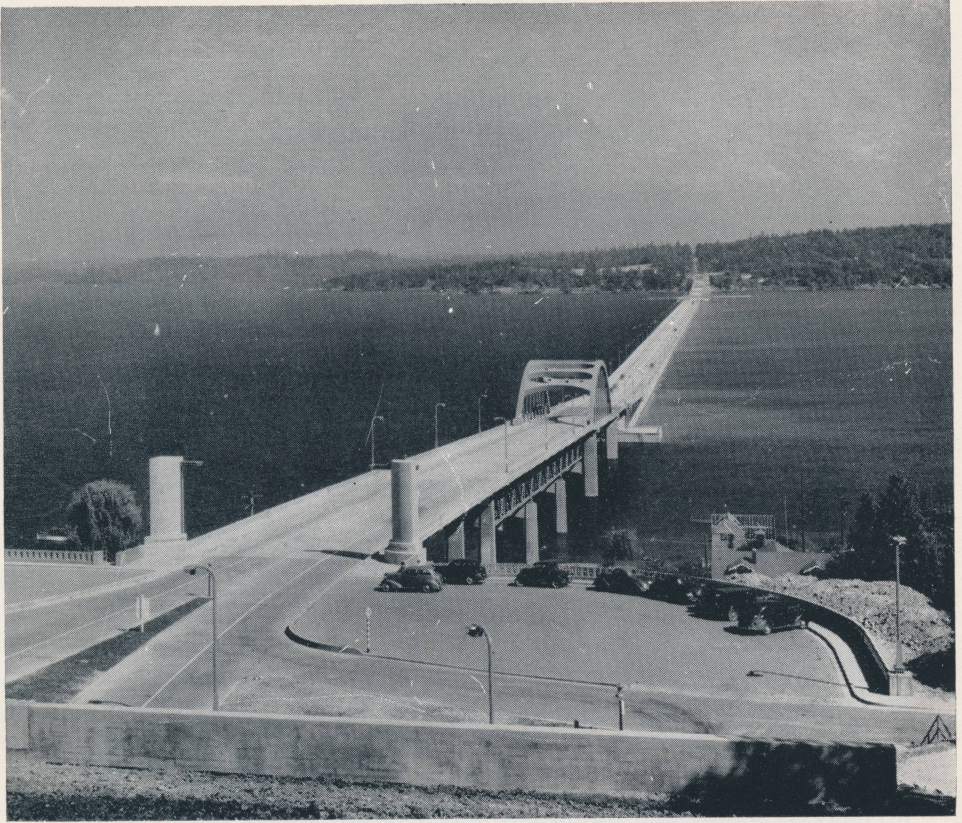
The KARISMA, which takes its meaning from the Greek word for anointing, unction, is the name of the yearbook which is edited and published each year by the students. It contains hundreds of pictures of school life which become the cherished record of the students.

ALUMNI

MEMBERSHIP. All graduates of Northwest Bible College (or Northwest Bible Institute) are eligible for membership in the Alumni Association, while former students may become associate members. The graduates and former students now total approximately 2100.

OFFICERS: The newly elected officers of the Association for 1950-51 are: President, Virgil Dickinson; Vice-President, Russell Emerson; Secretary-Treasurer, Jeannette Finch.

ACTIVITIES. On the last day of each school year alumni from many states convene at Northwest Bible College. First they assemble with the student body and take charge of the morning chapel service; next, they meet in the lower auditorium for their annual business meeting at which time they elect their officers for the coming year and transact other business for the association; this is followed by the alumni luncheon and then in the afternoon comes the traditional Alumni-Senior baseball game, which is held in nearby Woodland Park.



View of Seattle's Lake Washington Floating Bridge

THE LIVING ENDOWMENT FELLOWSHIP

To supplement the income of the school and to help keep the cost of tuition down, a program known as the LIVING ENDOWMENT FELLOWSHIP was launched in the Spring of 1950.

The LIVING ENDOWMENT FELLOWSHIP is composed of a group of persons interested in Northwest Bible College who propose to contribute regularly to the college. The annual dues of \$10.00 per unit of membership provide a regular income equivalent to the returns from an invested endowment. The Fellowship itself becomes the endowment.

The present goal is 2,500 units of membership. As the student enrollment grows, more will be needed. More specifically, our goal is for every Assembly of God minister in this region to be a member; for every alumna and alumnus to be a member; for every former student to be a member, and for every Assembly of God Church to be represented by membership. A certificate of membership is issued to all members.

Financial Information

EXPENSES

The school year is divided into three quarters of twelve weeks each, and tuition is based on the quarter. Students are expected to pay tuition and fees on the date of registration.

TUITION AND FEES

Tuition, per quarter.....	\$67.00	Student fee, per year.....	10.00
Ten credits or less,		Late entrance fee, per day..	1.00
per credit	6.10	Change in registration.....	.50
Registration fee, per year....	10.00	Special examination fee.....	1.00
Library fee, per year.....	5.00	Graduation fee	5.00

APPLIED MUSIC

Students may obtain private instruction on the pipe organ, piano, orchestral instruments, or in voice. See Applied music in Description of Courses.

Beginners, per month.....	\$6.50
Advanced, per month.....	7.50

REFUNDS

Students who withdraw from school within the first four days after instruction begins will be refunded all their tuition. Students who withdraw within the first six weeks after instruction begins will be refunded one-half of their tuition. After six weeks no tuition will be refunded. All fees are non-refundable. No refunds will be issued for meals missed by dormitory students.

ROOM AND BOARD

The cost of room and board will depend upon the type of housing the student selects. The charge for room and board in the dormitories is \$35.00 per month for women and \$40.00 per month for men. Students who reside in the dormitories furnish their own bedding.

Many students have been able to reduce the cost by living in groups and sharing expenses. Rooms may be obtained in private homes at a cost of \$15.00 to \$25.00 per month.

INFORMATION FOR VETERANS

Since the Northwest Bible College is an educational institution approved for education or training under Veterans Readjustment Act, Public 346, 78th Congress (G.I. Bill), veterans may receive their Christian education and training without cost to them. Every eligible veteran will have his tuition, fees, books, and supplies paid and will receive a subsistence allowance in addition. Subsistence allowance is paid on the following basis:

Without dependents.....	\$ 75.00 per month
With one dependent.....	105.00 per month
With two or more dependents.....	120.00 per month

WORK OPPORTUNITIES

Seattle provides ample opportunity for students to obtain part-time employment while attending school. The Dean of Women assists students in securing suitable places of employment.

Academic Information

REQUIREMENTS FOR ADMISSION

Religious Experience. Applicants for admission to the Northwest Bible College must have a vital experience of salvation and be of good Christian character. Those who have not received the Baptism of the Holy Spirit will be encouraged to do so. Students are admitted only on recommendation of their pastor and a Christian friend who has a knowledge of the applicant.

Education. Applicants seeking admission must be graduates of a high school. Only a limited number of mature non-high school graduates will be admitted as special students if they have sufficient training to warrant entrance and if they feel God's call upon their lives for Christian service. No diploma or degree will be granted to the special students unless they make up their high school work.

Health. It is recognized that sound physical health is essential to the satisfactory progress of a student who is expected to do a college level of work. Therefore an applicant must be able to present a physician's certificate concerning the status of his health if requested to do so.

Students are not permitted to enter into matrimonial engagements or to get married during the school year. Anyone violating this rule will be dismissed immediately from the school.

It is expected that all students who are accepted into the college will comply with the rules and regulations.

APPLICATION PROCEDURE

Applicants desiring to enter the Northwest Bible College must submit an application for admission (application form is attached to this catalog). Upon receipt of the application the Registrar will write to the references for recommendation.

Applicants should request the high school from which they were graduated to send a transcript of credits to the College.

After the recommendations are received from the references, the Committee on Admissions will review the application; and applicants will be notified by mail whether or not they are accepted.

Transfer students from other colleges or Bible schools should request that a transcript from the school be sent to the Registrar of the Northwest Bible College.

If possible, applications should be in at least one month before the opening of school.

REGISTRATION PROCEDURE

Registration dates for each quarter may be found in the school calendar. All former students and new students should report to the Registrar's office during the scheduled time to be properly registered. No one will be admitted to the class until his registration is completed.

LATE REGISTRATION

A late registration fee of one dollar per day is charged to all students who do not register before the scheduled time. Late registration fees are not paid by the Veterans' Administration. Students are not permitted to register for credit after one week of class instruction, except by special permission of the admissions committee.

CHANGE IN REGISTRATION

If a student wishes to make a change in his selection of courses, he may do so if he receives the written consent of the Registrar and the instructor concerned. A fee of fifty cents is charged for each change in registration. Students are not permitted to make a change in registration after one week of class instruction.

WITHDRAWALS

A student who wishes to withdraw from a course must first receive the written permission of the Registrar and the instructor concerned; otherwise he will be given an "F." A student who withdraws according to proper procedure during the first four weeks of the quarter will be given a "W" in the course from which he withdraws. After four weeks such a grade can be given only if the student is doing passing work at the time of the withdrawal.

If a student wishes to withdraw from school, he must first consult with the Dean and then notify the Registrar. If this is impossible because of illness or an emergency, then the student must notify the Registrar within one week after leaving school. If the above procedure is not followed, the student will be given a grade of "F" in each course for which he is enrolled.

INCOMPLETES

An incomplete in a course must be made up within six weeks after the end of the quarter, or the grade will automatically become an "F." Incompletes are given only in case of absence due to illness or an emergency.

STUDENT CLASSIFICATION

Freshmen—Students having less than 45 quarter hours credit.

Juniors—Students having at least 45 quarter hours credit.

Seniors—Students having at least 90 quarter hours credit.

Fourth-year students—Students having at least 135 quarter hours credit.

ACADEMIC LOAD

CREDITS—The term credit means a unit of measure for class work. One credit signifies the value toward graduation, if satisfactorily completed, of a class meeting fifty minutes each week for a quarter of twelve weeks.

REDUCTION OF LOAD—A student's academic load is subject to reduction if his working schedule outside of school is too heavy. The

following regulation was adopted by the faculty to govern outside work in relation to the academic load.

<i>Outside Work Allowable</i>	<i>Academic Load</i>
Twenty hours or less per week.....	16 to 18 credits
Twenty-five hours or less per week.....	13 to 15 credits
Thirty or less hours per week.....	10 to 12 credits
Thirty or more hours per week.....	12 credits maximum

GRADING SYSTEM

Grades	Significance	Grade Points
A	Excellent	4
B	Superior	3
C	Average	2
D	Passing	1
F	Failure	0
I	Incomplete	0
W	Withdrawal	0

GRADUATION REQUIREMENTS

The following requirements must be met in order for a student to receive a diploma or a degree.

1. The following credits must be earned:
 - a. A total of 135 credits for the three-year course with diploma.
 - b. A total of 180 credits for the four-year course with degree.
2. The student must satisfy the major and minor requirements of the course for which he is enrolled.
3. In order to receive a degree a student must maintain a least a 2.0 average for the four years.
4. The student must have a character above reproach.
5. The student must have a reasonable proficiency in English.
6. The student must be in residence at least one year.
7. The student must have all his accounts with the college paid in full.

HONORS

Students who have maintained an average of 3.5 for the three or four years will be placed on the Honor Roll. Students who have maintained a 3.8 average or over for four years will have the baccalaureate degree conferred "magna cum laude." Those whose grade point is 3.5 but less than 3.8 will have the degree conferred "cum laude." Students who have maintained an average of 3.8 or over for the four years will be given a special honor certificate as well as a special honor award, a gold key for the men and a gold pin for the women. Students transferring from other schools will be eligible for membership in the Honor Society provided that their averages in the schools where they formerly attended are 3.8 or more and that their averages in Northwest Bible College are 3.8 or better.

Curricula and Courses

In order that a student may specialize in the field of his interest, the Northwest Bible College has provided in its curriculum courses in Theology, Missions, Christian Education, and Music. At the time of entrance the student will enroll in the department which he selects.

The College offers a three-year course and a four-year course in each of the above-named departments. A diploma is granted to those who satisfactorily complete the three-year course, and a B.A. degree in Religious Education is conferred upon those who satisfactorily complete the four-year course. Certain requirements must be met in each course in order for a student to earn a diploma or a degree. These requirements are set forth in COURSES OF INSTRUCTION which follow.

REQUIREMENTS FOR DIPLOMA IN THEOLOGY

A total of 135 quarter hours is required for graduation with a diploma of which the following must be included:

	Quarter Hours
Bible	45
Including 105, 106, 111, 112, 113, 206, 207, 208, 214, 309	
Systematic Theology	15
Including 121, 324, 325, 326	
Apologetics 231	3
Christian Education	3
Practical Theology 140, 306, 307	9
Missions	3
Psychology 130	2
History 241 and 242	10
English 101, 102, 203, 204	16
Speech 210, 211	6
Music 160	3
Electives	20
	135

REQUIREMENTS FOR DEGREE IN THEOLOGY

A total of 180 quarter hours is required for graduation with a Bachelor of Arts degree of which the following must be included in addition to those listed above:

	Quarter Hours
History 444	5
Apologetics 432 or 433	3
Science 473	5
Philosophy 431, 451	8
Language	15
Electives	9
	180

REQUIREMENTS FOR DIPLOMA IN MISSIONS

A total of 135 quarter hours is required for graduation with a diploma of which the following must be included:

	Quarter Hours
Bible and Theology.....	45
Bible 105, 106, 111, 112, 113, 206, 207, 208, 214, 309	
Theology 121, 324, 326	
Apologetics 231.....	3
Christian Education.....	3
Practical Theology 140, 306.....	6
Missions and language (a minimum of 15 hours required)	30
Psychology 130.....	2
History 241.....	5
English 101, 102, 203, 204.....	16
Speech 210, 211.....	6
Music 160.....	3
Science 270, 371 *392.....	6
Electives.....	20
	135

* Required of Girls.

REQUIREMENTS FOR DEGREE IN MISSIONS

A total of 180 quarter hours is required for graduation with a Bachelor of Arts degree in the Missionary course of which the following must be included in addition to those listed above:

	Quarter Hours
History 444.....	5
Apologetics 432 or 433.....	3
Missions 466, 468.....	6
Science 473.....	5
Electives.....	26
	180

REQUIREMENTS FOR DIPLOMA IN CHRISTIAN EDUCATION

A total of 135 quarter hours is required for graduation with a diploma of which the following courses must be included:

	Quarter Hours
Bible and Theology.....	45
Bible 105, 106, 111, 112, 113, 206, 207, 208, 214, 309	
Theology 121, 326	
Christian Education.....	30
Including 250, 251, 352, 353, 354, 355, 453, *455	
Practical Theology 140.....	3
Missions 260.....	3
Psychology 130, 331.....	7

History 240, 242.....	8
English 101, 102, 203, 204.....	16
Speech 210, 211.....	6
Music 160.....	3
Electives	14
	<hr/>
	135

* Minimum of 2 hours required; maximum, 4 hours.

A total of 180 quarter hours is required for graduation with a Bachelor of Arts degree in the Christian Education course of which the following must be included in addition to those listed above:

	Quarter Hours
History 444.....	5
Science 473.....	5
Language	15
Christian Education 456, 457, 453.....	9
Electives	11
	<hr/>
	180

REQUIREMENTS FOR DIPLOMA IN MUSIC

The selection and order of music courses will be made on the basis of the student's background and will be made with the guidance of a faculty counsellor from the music department. A total of 135 quarter hours will be required for graduation with diploma of which the following basic requirements must be included in addition to a minimum of 30 quarter hours taken in the music department. All music majors must have a minor in some field of applied music, such as, organ, piano, voice, etc.

	Quarter Hours
Bible and Theology	45
Bible 105, 106, 111, 112, 113, 206, 207, 208, 214, 309	
Theology 121, 326	
Practical Theology 140	3
Psychology 130	2
English 101, 102, 203, 204	16
Speech 210	3
Music (minimum 30)	30
Electives	36
	<hr/>
	135

For the Bachelor of Arts Degree in Music, a total of 180 quarter hours is required of which the following must be included in addition to a minimum of 45 quarter hours taken in the music department and the basic requirements listed above:

	Quarter Hours
History 444	5
Science 473	5
Language	15
Christian Education 453	3
Music (minimum)	15
Electives	2
	180

EVANGELICAL TEACHER TRAINING ASSOCIATION

For the purpose of standardizing requirements for prospective Christian educational workers who are training in Bible Institutes and Bible Colleges, an organization was founded among these schools in 1930 known as the Evangelical Teacher Training Association. To each Bible Institute or Bible College student who completes the prescribed courses of study which is set forth by the E.T.T.A., a special diploma is issued by this organization. This diploma is of value to those who plan to enter the field of Christian education in any of its various phases.

The E.T.T.A. requirements for the Gold Seal Diploma may be met by taking the following courses offered in Northwest Bible College:

Bible 105, 106, 111, 112	12 hours
Personal Evangelism 140	3 hours
Missions 260	3 hours
Bible Introduction 433	3 hours
Child Study 354	3 hours
Pedagogy 251	3 hours
Sunday School Administration 355	3 hours
Department Specialization	4 hours
Elect four hours from one of the following departments:	
Children's Department 250, 353, 354	
Youth Department 457, 354	
Adult Department 331, 431, 330, 456	
Electives	2 hours
	36 hours

Courses of Instruction

THEOLOGICAL COURSE

FIRST YEAR

Autumn Quarter

	Credit Hours
111 Old Testament Pentateuch.....	4
105 Harmony of the Gospels.....	4
130 Orientation	2
101 English Composition I.....	5

Winter Quarter

112 Old Testament Historical Books	4
106 Acts	3
102 English Composition II.....	5
160 Music Fundamentals.....	3

Spring Quarter

113 Old Testament Poetical Books	3
121 Fundamentals of Doctrine..	3
120 Typology	3
260 History of Missions.....	3
140 Personal Evangelism.....	3

SECOND YEAR

Autumn Quarter

	Credit Hours
206 Pauline Epistles	5
214 Major and Minor Prophets	4
222 Dispensations	3
210 Fundamentals of Speech.....	3

Winter Quarter

207 Pauline Epistles.....	4
241 Church History.....	5
231 Polemics	3
211 Advanced Speech.....	3

Spring Quarter

208 General Epistles.....	4
223 Prophecy	3
242 History of Christianity In America.....	5
204 Survey of American Literature	3

THIRD YEAR

Autumn Quarter

	Credit Hours
324 Systematic Theology.....	4
330 Pastoral Theology	3
308 Daniel	2
327 Christology	3
Elective	3

Winter Quarter

325 Systematic Theology	4
309 Revelations	3
343 Ancient History	3
306 Homiletics	3
Electives	2

Spring Quarter

326 Pneumatology	3
305 Isaiah	3
331 Apologetics	3
307 Advanced Homiletics	3
355 Sunday School Organ- ization	3

FOURTH YEAR

Autumn Quarter

	Credit Hours
311 Romans	3
431 Pastoral Counselling	3
444 American History	5
301 Language	5

Winter Quarter

310 John	3
or	
433 Biblical Introduction	3
451 Introduction to Philosophy..	3
473 Survey of Physiology	5
302 Language	5

Spring Quarter

410 Hebrews	2
432 Biblical Archaeology	3
452 Philosophy of the Christian Religion	5
303 Language	5

MISSIONARY COURSE

FIRST YEAR

Autumn Quarter

	Credit Hours
111 Old Testament Pentateuch.....	4
105 Harmony of the Gospels.....	4
130 Orientation	2
101 English Composition I	5

Winter Quarter

112 Old Testament Historical Books	4
106 Acts	3
102 English Composition II	5
160 Music Fundamentals	3

Spring Quarter

113 Old Testament Poetical Books	3
121 Fundamentals of Doctrine.....	3
120 Typology	3
260 History of Missions	3
140 Personal Evangelism	3

SECOND YEAR

Autumn Quarter

	Credit Hours
206 Pauline Epistles	5
214 Major and Minor Prophets.....	4
222 Dispensations	3
210 Fundamentals of Speech.....	3

Winter Quarter

207 Pauline Epistles	4
241 Church History	5
231 Polemics	3
211 Advanced Speech	3

Spring Quarter

270 First Aid, Hygiene	3
208 General Epistles	4
223 Prophecy	3
204 Survey of Literature	3
251 Principles of Teaching	3

THIRD YEAR

Autumn Quarter

	Credit Hours
362 Missionary Principles and Practices	3
371 Tropical Diseases	3
324 Systematic Theology	4
301 Language	5

Winter Quarter

361 Linguistics and Phonetics.....	3
309 Revelations	3
302 Language	5
372 Principles of Obstetrics (girls)	2
306 Homiletics	3

Spring Quarter

463 Survey of Missions	3
305 Isaiah	3
326 Pneumatology	3
303 Language	5

FOURTH YEAR

Autumn Quarter

	Credit Hours
444 American History	5
301 Language or elective	5
431 Pastoral Counseling	3
311 Romans	3

Winter Quarter

302 Language or elective	3
473 Survey of Physiology	5
466 Missionary Anthropology.....	3
433 Biblical Introduction	3
310 John	3

Spring Quarter

303 Language or elective	3
463 Survey of Missions	3
432 Archaeology	3
410 Hebrews	2
Electives	4

CHRISTIAN EDUCATION COURSE

FIRST YEAR

Autumn Quarter

	Credit Hours
111 Old Testament Pentateuch.....	4
105 Harmony of the Gospels....	4
130 Orientation	2
101 English Composition I	5

Winter Quarter

112 Old Testament Historical Books	4
106 Acts	3
102 English Composition II	5
160 Music Fundamentals	3

Spring Quarter

113 Old Testament Poetical Books	3
121 Fundamentals of Doctrine..	3
120 Typology	3
260 History of Missions	3
140 Personal Evangelism	3

SECOND YEAR

Autumn Quarter

	Credit Hours
206 Pauline Epistles	5
214 Major and Minor Prophets..	4
222 Dispensations	3
210 Fundamentals of Speech....	3

Winter Quarter

211 Advanced Speech	3
207 Pauline Epistles	4
352 Introduction to Christian Education	5
240 Historical Geography	3

Spring Quarter

251 Principles of Teaching	3
242 History of Christianity in America	5
208 General Epistles	4
204 Survey of Literature	3

THIRD YEAR

Autumn Quarter

	Credit Hours
331 General Psychology	5
354 Christian Education of Children and Youth	5
308 Daniel	2
Elective	3

Winter Quarter

250 Religious Visual Aids	3
455 Practice Teaching	2
309 Revelations	3
343 Ancient History	3
433 Biblical Introduction	3

Spring Quarter

353 Vacation Bible School	3
355 Sunday School Organ- ization	3
455 Practice Teaching	2
326 Pneumatology	3
305 Isaiah	3

FOURTH YEAR

Autumn Quarter

	Credit Hours
444 American History	5
456 Christian Education of Adults	3
304 Language	5
311 Romans	3

Winter Quarter

305 Language	5
457 Worship in Christian Education	3
473 Survey of Physiology	5
310 John	3

Spring Quarter

453 Philosophy of Christian Education	3
410 Hebrews	2
432 Biblical Archaeology	3
306 Language	5
Elective	2

MUSIC COURSES OFFERED

1950-51

Starred courses listed below will be taught in the quarters designated provided that there is a minimum registration of eight students for each course.

AUTUMN QUARTER

	Hours
Music Fundamentals	3
*Harmony II (Prerequisite, Harmony I)	5
*Orchestral Instruments	3
*Instrumental Conducting	3
Choir (1 credit per quarter)....	2
Orchestra (1 credit per quarter)	2
*Music Appreciation	3

WINTER QUARTER

	Hours
*Sight-Singing	5
*Music Theory	5
*Orchestral Instruments	3
*Choral Conducting	3
Choir (1 credit per quarter)....	2
Orchestra (1 credit per quarter)	2

SPRING QUARTER

	Hours
*Harmony I	5
*Hymnology	3
*History of Music	3
*Advanced Sight-Singing	5
Choir (1 credit per quarter)....	2
Orchestra (1 credit per quarter)	2

Description of Courses

BIBLE

105—Harmony of the Gospels

4 credits, Autumn Quarter. A comparative study of the four gospels with a view to discovering the distinctive contribution each makes.

106—Acts

3 credits, Winter Quarter. A detailed study of the book of Acts, dealing with the history of the early apostolic Christian Church, its origin and activities.

111—Old Testament Pentateuch

4 credits, Autumn Quarter. A thorough study of the first five books of the Bible, with special emphasis upon Genesis.

112—Old Testament Historical Books

4 credits, Winter Quarter. An introduction and survey of each of the historical books of the Old Testament, giving outline studies and the living message of every book.

113—Old Testament Poetical Books

3 credits, Spring Quarter. Biblical poetry is of the very highest order. This course is designed to give the student a thorough knowledge of Job, Psalms, Proverbs, Ecclesiastes, and the Song of Solomon.

206-207—Pauline Epistles

5 credits, Autumn Quarter. 4 credits, Winter Quarter. An analysis of Paul's letters to the early churches with special emphasis on the great doctrines of the church.

208—General Epistles

4 credits, Spring Quarter. An analytical study of the general Epistles for the contribution which each makes to New Testament doctrine.

214—Major and Minor Prophets

4 credits, Autumn Quarter. A survey of the Old Testament prophets, the times in which they lived, and the books which they wrote.

305—Isaiah

3 credits, Spring Quarter. An intensive study of this important book, including a consideration of its unity, authorship and messianic prophecies.

308—Daniel

2 credits, Autumn Quarter. A careful analysis of both the historical and the prophetic portions of the book, including a study of the life and times of the prophet.

309—Revelation

3 credits, Winter Quarter. A prophetic and spiritual analysis of the Book of Revelation.

310—John

3 credits, Winter Quarter. A thorough study of the Gospel of John, which supplements the synoptic Gospels and presents Christ as the Son of God.

311—Romans

3 credits, Autumn Quarter. A thorough analysis of the logical unfolding of the great doctrine of justification and sanctification, as well as a study of God's plan for Israel and of the Christian's duty to God and to his government.

410—Hebrews

2 credits, Spring Quarter. An intensive study of this important book, showing the superiority of the New Covenant to the Old and setting forth Christ as the Great High Priest.

APOLOGETICS**231—Polemics**

3 credits, Winter Quarter. A study which will equip the Christian worker to combat intelligently the false religious systems of our day.

331—General Apologetics

4 credits, Spring Quarter. A course which provides abundance of proof that Christianity is God-ordained and of divine origin.

432—Biblical Archaeology

3 credits, Spring Quarter. The scientific study of the material remains of past human life and activities, as shown by relics, artifacts, implements, inscriptions, interments, and monuments of ancient times.

433—Biblical Introduction

3 credits, Winter Quarter. Biblical introduction is that part of theology directly preliminary to actual exegesis and concerned with the literary and external history of the Bible. It presents the age, authorship, genuineness and canonical authority of the Scriptures, tracing their origin, preservation and integrity.

PRACTICAL THEOLOGY**140—Personal Evangelism**

3 credits, Spring Quarter. A study of effective methods to produce the best results in evangelism.

306—Homiletics

3 credits, Winter Quarter. A study of the preparation, outlining, and delivery of sermons.

307—Advanced Homiletics

3 credits, Spring Quarter. A course designed to acquaint the student with various aspects of preaching and special types of sermons. Students will be expected to deliver sermons before the class.

330—Pastoral Theology

3 credits, Autumn Quarter. A practical study dealing with the pastor's relationship to God, to his church, to his denomination, and to the community. This course will include both church administration and ministerial ethics.

350—Church Architecture

2 credits, Winter Quarter. A practical study in designing and building churches, including cost and location.

SYSTEMATIC THEOLOGY**120—Typology**

3 credits, Spring Quarter. A study of Christ and the Church in types, forms, and ceremonies as given in the Old Testament.

121—Fundamentals of Doctrine

3 credits, Spring Quarter. An outline study of the basic doctrines of the Bible employing non-technical terminology.

222—Dispensational Studies

3 credits, Autumn Quarter. God's dealing with mankind in various periods of Biblical history, and a detailed study of "God's Plan of the Ages."

223—Prophecy

3 credits, Spring Quarter. A course designed to establish faith in the inspiration of the Scriptures by a study of fulfilled prophecy; also a consideration of prophecies yet to be fulfilled.

324, 325—Systematic Theology

4 credits, Autumn and Winter Quarters. A systematic presentation of the fundamental doctrines of the Bible, dealing with each one separately and exhaustively. These concern the Scriptures, the Godhead, Man, moral obligation, the doctrines of salvation, the church, and last things.

326—Pneumatology

3 credits, Spring Quarter. A study in the theology of the manifestations, gifts, and fruits of the Holy Spirit.

327—Christology

3 credits, Autumn Quarter. A study of the four principle supernatural aspects of the life of Christ during His earthly life, viz. His Virgin Birth, His miracles, His Transfiguration, and His Resurrection. This study acquaints the student with the anti-supernaturalistic philosophies relative to the life of Christ together with a true analysis of such theories so that he may more intelligently deal with them.

CHRISTIAN EDUCATION

250—Religious Visual Aids

3 credits, Winter Quarter. The use of visual aids as an effective means of presenting the gospel to children.

251—Principles of Teaching

3 credits, Spring Quarter. A course of study designed to meet the need of all those who plan to be engaged in a teaching capacity, whether in the public schools, the Sunday School, the pastorate, or the mission field.

352—Introduction to Christian Education

5 credits, Winter Quarter. An introductory course designed especially for Sunday School workers which seeks to acquaint them with the history and methods of religious education.

353—Vacation Bible School

3 credits, Spring Quarter. The organization and administration of Vacation Bible School will be considered with the emphasis upon practical aids and materials which will equip the student to go into the work as a director or teacher.

354—Christian Education of Children and Youth

5 credits, Autumn Quarter. A study of the religious nature and needs of children and youth. Special attention will be given to the principles and methods of religious instruction and the development of Christian character.

355—Sunday School Organization

3 credits, Spring Quarter. Presenting the organization, management, and maintenance of the Sunday School.

453—Philosophy of Christian Education

3 credits, Spring Quarter. A re-thinking and re-evaluation of the true purpose of education, the role of the teacher in the school, and the contribution of the Christian school to society.

455—Practice Teaching

2 credits, limit, 4 credits, all Quarters. One hour of teaching in the church school and one hour of conference each week.

***456—Christian Education of Adults**

3 credits, Autumn Quarter. A study of the needs and problems of adult life; effective methods and materials in the Christian education of adults; the organization, administration, and supervision of adult education in the church.

***457—Worship in Christian Education**

3 credits, Winter Quarter. A consideration of the vital role of worship in Christian experience; how to plan worship services for children and young people; the promotion of worship in the home.

* Not offered in 1950-51.

MISSIONS

260—History of Missions

3 credits, Spring Quarter. (For description see History 260.)

361—Linguistics and Phonetics

3 credits, Winter Quarter. A study regarding the correct methods and the formation of sounds to be used in learning a new language.

362—Missionary Principles and Practices

3 credits, Autumn Quarter. A course designed to help the prospective missionary in preparation for the foreign field.

463—Survey of Missions

3 credits, Spring Quarter. A study of present-day conditions in every mission field, designed to acquaint the student with today's needs and the best methods for meeting them.

466—Missionary Anthropology

3 credits, Winter Quarter. A survey of physical and cultural anthropology which will help the missionary to understand and interpret the significance of the material, social and religious culture which he will encounter on the foreign field.

PSYCHOLOGY AND PHILOSOPHY

130—Orientation

2 credits, Autumn Quarter. This course will be given to freshmen in the first quarter of their college career for the purpose of acquainting them with tested scientific methods of reading, preparing for examinations, and studying in general.

331—General Psychology

5 credits, Autumn Quarter. An introduction to the basic principles of human behavior, taught from the Christian viewpoint.

354—Christian Education of Children and Youth

5 credits, Autumn Quarter. (For description see Christian Education 354.)

431—Pastoral Counseling

3 credits, Autumn Quarter. A study of mental disorders and the Scriptural application as a remedy.

***432—Psychology of Christian Religion**

4 credits. A practical study of the psychology of man in the Bible and in Christian religious experience.

***450—Ethics**

3 credits, Autumn Quarter. A study of the underlying moral principles of human conduct. Christian solutions are suggested for the personal, economic, social, and religious problems of our own day.

451—Introduction to Philosophy

3 credits, Winter Quarter. A study of the basic problems of life and existence, such as the nature and scope of knowledge, the nature of morality, the relation of science to religion and the significance of human history. Emphasis is given to the development of wholesome Christian philosophy of life.

452—Philosophy of Christian Religion

5 credits, Spring Quarter. This course sets forth the philosophy of the Christian religion, and shows its superiority to other religious systems. It also examines the basic Biblical facts upon which the Christian philosophy is established and the validity of Christian religious experience.

453—Philosophy of Christian Education

3 credits, Spring Quarter. A re-thinking and re-evaluation of the true purpose of education, the role of the teacher in the school, and the contribution of the Christian school to society.

* Not offered in 1950-51.

HISTORY

240—Historical Geography of the Bible

3 credits, Winter Quarter. A study in the geographical aspects of Bible lands with emphasis on historical events, manners, and customs.

241—Church History

5 credits, Winter Quarter. A comprehensive study of the Christian Church from the apostolic age to the present, with special attention given to the rise of the papacy, the Great Schism, and the Reformation.

242—History of Christianity in America

5 credits, Spring Quarter. An interesting study of the establishment and development of the Church in America. Special attention will be given to the influence of the great religious revivals and the history of the various denominations, including the Assemblies of God.

260—History of Missions

3 credits, Spring Quarter. The origin and development of foreign missions, with studies of famous missionaries.

343—Ancient History

3 credits, Winter Quarter. A course designed to provide additional knowledge for the understanding of the Bible. The rise and fall of great empires are studied in their relation to Israel, including the Inter Testament Period.

444—History of the United States

5 credits, Autumn Quarter. A survey of the social, political, and cultural development of the United States from colonial times to the present.

ENGLISH AND SPEECH

101, 102—English Composition

5 credits, Autumn Quarter, 5 credits, Winter Quarter. A vital study of the fundamentals of writing and the principles and practice of composition.

203, 204—Survey of American Literature

3 credits, Spring Quarter. A study of the representative works in American literature from the colonial period to the present. Emphasis placed on writings of the chief interpreters of American life and religious thinking.

210—Fundamentals of Speech

3 credits, Autumn Quarter. This course is designed to teach students the basic principles of speech, including organization and delivery.

211—Advanced Speech

3 credits, Winter Quarter. This course deals with audience analysis and problems of organization and delivery. Attention is given to the presentation of special types of speeches.

212—Parliamentary Law

2 credits, Spring Quarter. The principles of parliamentary procedure are studied and opportunity is given for them to be applied in the classroom.

306, 307—Homiletics

3 credits each quarter. (For description see Practical Theology 306, 307.)

361—Linguistics and Phonetics

3 credits, Winter Quarter. (See Missions 361 for description.)

*485—Radio Technique

3 credits. (For description see Music 485.)

JOURNALISM

381—Religious Journalism

3 credits, Autumn Quarter. A course of study designed to aid the Christian writer in the preparation of articles on spiritual themes for secular and religious publications. Prerequisite: 10 hours English Composition.

382—Newswriting for Publication

3 credits, Winter Quarter. The preparation of feature articles for magazines and newspapers. Prerequisite: 10 hours English Composition, and Journalism 381.

383—Creative Writing

3 hours, Spring Quarter. A study of each of the literary forms including trial writing. In the latter part of the course the student will specialize on some type of writing of his own choosing. Prerequisite: 10 hours English Composition and Journalism 381.

* Not offered in 1950-51.

LANGUAGES

301, 302, 303—Elementary Greek

5 credits, Autumn, Winter, Spring Quarters. Grammar and composition with reading from the Greek New Testament.

301, 302, 303—Elementary French

5 credits, Autumn, Winter, and Spring Quarters. Pronunciation, essentials of grammar composition, and conversation. Readings from textbooks and French Bible.

301, 302, 303—Elementary Spanish

5 credits, Autumn, Winter, and Spring Quarters. Pronunciation, essentials of grammar composition, and conversation. Readings from textbooks and Spanish Bible.

304—Spanish Grammar Review

5 credits, Autumn Quarter. Prerequisite: 1 year Beginner's Spanish, taken either in college or high school. A refresher course in Spanish grammar.

305, 306—Spanish Conversation and Composition

3 credits, Winter and Spring Quarters. This course gives the more advanced phases of Spanish grammar and conversation. The Spanish Bible is studied in this course.

MUSIC

160—Music Fundamentals

3 credits, Winter Quarter. An approach to music from the beginning, principles of notation, counting, elementary sight-singing and ear-training, and conducting.

261—Music Theory

4 credits, Winter Quarter. Prerequisite: music fundamentals or instructor's permission. Sight-reading and ear-training, scales, counting, notation, and chord structure.

262—Sight Singing

5 credits, Winter Quarter. To present to the student an approach to the study of harmony through the development of the hearing of music, participation in singing and music dictation. Prerequisite: music fundamentals, or instructor's permission.

266—Harmony I

5 credits, Spring Quarter. A course in the writing and harmonizing of simple melodies. Prerequisite: music theory and sight-singing.

264, 265—Elementary Orchestra Instruments

3 credits. Teaching orchestral instruments to students who have never had experience with the instrument they chose. The purpose is to enable them to have a working knowledge of the instrument and be able to teach the basic principles in a beginning orchestra. Excellent exploratory experience for a student to acquaint himself with other instruments. There will be a rental fee for use of the instruments the school does not own.

367—Harmony II

5 credits, Autumn Quarter. A continuation of Harmony I.

368—Instrumental Conducting

3 credits, Autumn Quarter. A study of the technique of conducting instrumental groups. Music majors on instructor's permission.

369—Choral Conducting

3 credits, Winter Quarter. A study of the technique of conducting choral groups. Prerequisite: instructor's permission.

370—History of Music

3 credits, Spring Quarter. The study of music from the earliest beginning. Special emphasis is placed on outstanding composers. Class work in singing, playing, and recordings.

371—Hymnology

2 credits, Spring Quarter. A study of the origin and development of church music.

372—Music Appreciation

3 credits, Autumn Quarter. Analysis of various types of music through records and class participation. Instrumental and vocal combinations.

Advanced Sight-Singing

5 credits, Spring Quarter. A continuation of Sight-Singing.

***480—Counterpoint**

5 credits. A course in the regulation of concurrent melodies.

***481—Music Composition**

5 credits. The writing of music in larger forms. Both instrumental and vocal.

***485—Radio Technique**

3 credits. A study in planning radio programs. Records made of class programs. Actual radio experience given.

College Choir

1 credit per quarter, maximum six. Two rehearsals per week. Open to men and women upon try-out.

College Orchestra

1 credit per quarter, maximum six. Two rehearsals per week. Open to both men and women who play orchestral instruments.

APPLIED MUSIC

1 credit is given for one lesson and five hours of practice per week. The student may earn two credits by taking two lessons per week and by practicing ten hours per week. No credit is allowed if the student misses more than two lessons during a quarter.

Private lessons and classes in music are offered on the following instruments: Pipe-organ, piano, violin, cello, viola, string bass, accordion, flute, clarinet, oboe, trumpet, trombone, baritone, voice, sousaphone, tuba, marimba, vibraharp, drum, saxophone. French horn and *Fretted Instruments. (*Academic credit will not be issued for fretted instruments.) For applied music fees see Financial information.

SCIENCE**270—Hygiene-First Aid**

3 credits, Spring Quarter. A practical course in personal hygiene and first aid.

371—Tropical Diseases

3 credits, Autumn Quarter. A study to aid in prevention, diagnosis and treatment of common communicable diseases as well as the diseases most common on the various mission fields. This course is especially helpful to those planning to go to the mission field.

372—Principles of Obstetrics

2 credits, Spring Quarter. A study of a science dealing with the art of childbirth. Moving pictures are used to aid in this study. This course also includes some study of practical nursing.

473—Survey of Physiology

5 credits, Winter Quarter. A study of the relationship between the structure and function of the human body.

* Not offered in 1950-51.

ENROLLMENT FOR 1949-50

Enrollment for the School Year

	Men	Women	Total
Freshman Class	41	28	69
Junior Class	33	22	55
Senior Class	33	34	67
Fourth Year Class	24	3	27
Special Students	17	8	25
Totals	148	95	243
In Percentages	60%	40%	100%

1949-50 GEOGRAPHICAL REPRESENTATION OF STUDENT BODY

Arkansas	1	New Jersey	1
California	4	New York	2
Colorado	3	North Dakota	3
Idaho	14	Ohio	1
Illinois	1	Oklahoma	1
Iowa	1	Oregon	23
Montana	7	Pennsylvania	1
Nebraska	4	Washington	161

OUTSIDE OF UNITED STATES

Alaska	1	Italy	2
Canada	7	Jamaica	1
Hawaii	2	Norway	2

Student Roster--1949-50

FRESHMAN CLASS

Ackerman, Richard—Portland, Oregon	Clemo, Bernice—Victoria, B. C., Canada
Agnew, Agnes—Vancouver, B. C., Canada	Cline, Carroll—Sunnyside, Washington
Ahrens, Glenn—Medical Lake, Washington	DeBock, Ronald—Tacoma, Washington
Allee, Donald—Malone, Washington	Decker, Myrl—Kirkland, Washington
Andrews, Robert—Seattle, Washington	Dregnie, Charlotte—De Lake, Oregon
Arbuckle, Betty—Kendrick, Idaho	Dykeman, Roy—Puyallup, Washington
Atkinson, Thelma—Yoncalla, Oregon	Erlandson, Linnea—Yakima, Washington
Balam, Velma—Seattle, Washington	Evans, Richard—Seattle, Washington
Beardsley, John—Laupahoehoe, Hawaii	File, James—Aniak, Alaska
Blaker, Vera—Enumclaw, Washington	Forsman, Robert—Payette, Idaho
Blaker, Verna—Enumclaw, Washington	Fukui, Likio—Laupahoehoe, Hawaii
Brazle, Dean—Loomis, Washington	Fuller, Nellie—Wapato, Washington
Cade, Eleanor—La Grande, Oregon	Gangwish, Leslie—Aberdeen, Washington
Carmelia, Cecil—Millville, New Jersey	Gawith, Geraldine—Buckley, Washington
Clark, Marvin—Sunnyside, Washington	Grimes, Geneva—Seattle, Washington

Hall, Wayne—Ontario, Oregon
 Harris, Joan—Sunnyside, Washington
 Henager, Louise—Spokane, Washington
 Irby, Elwood—Kelso, Washington
 Irwin, Elvin—Ridgefield, Washington
 Johnson, Clayton—Tacoma, Washington
 Johnson, Gene—Leavenworth, Washington
 Johnson, Muriel—Tonasket, Washington
 Jones, Claude—Yakima, Washington
 Lehrman, June—Suquamish, Washington
 Lien, Audrey—Edmonds, Washington
 Lindgren, Phyllis—Selah, Washington
 Lundquist, Lillian—Seattle, Washington
 McDonald, John—De Lake, Oregon
 Millhouse, Dallas—Ottumwa, Iowa
 Overland, Naomi—Sunnyside, Washington
 Peterson, Alvin—Seattle, Washington
 Pettis, Wilma—Wapato, Washington
 Plumb, Jim—Port Orchard, Washington

Rhymes, Hubert—Seattle, Washington
 Rhymes, Paul—Seattle, Washington
 Ritter, Phil—Sunnyside, Washington
 Russell, Gloria—Vale, Oregon
 Schwabbauer, Joan—Salem, Oregon
 Sharpe, Russell—Portland, Oregon
 Simpson, John—Seattle, Washington
 Slattum, Lyle—Kathryn, North Dakota
 Stevens, Jim—Paonia, Colorado
 Storer, Jack—Seattle, Washington
 Swanson, Walter—Seattle, Washington
 Taft, Ellouise—Kelso, Washington
 Walker, Dave—Newberg, Oregon
 White, Margaret—Conrad, Montana
 Williams, Cecil—Toppenish, Washington
 Wilson, Lee—Anacortes, Washington
 Wingard, Cecil—Tacoma, Washington
 Young, Ray—Anacortes, Washington



JUNIOR CLASS

Balam, John—Seattle, Washington
 Benson, Eda—Seattle, Washington
 Bjur, Ralph—Ridgefield, Washington
 Boersma, Richard—Everett, Washington
 Bogue, Donald—Seattle, Washington
 Buckingham, Emily—Waterville, Wash.
 Buhler, Duane—Kelso, Washington
 Burner, Dorothy—Auburn, Washington
 Byrd, Lester—Arlington, Washington
 Christenson, Kelly—Everett, Washington
 Cleveland, Lester—Kirkland, Washington
 Cole, Marvin—Tacoma, Washington
 Crowder, Daniel—Yakima, Washington
 Crowder, Linfield—American Falls, Idaho
 Dalan, May—Yelm, Washington
 Danielson, LeRoy—Seattle, Washington
 Day, Harriet—Hartford, Washington
 Doehne, Melvin—Kelso, Washington
 Dougherty, Hazel—Payette, Idaho
 Eager, Donald—Seattle, Washington
 Emory, Leonard—Arlington, Washington
 Fate, Irvin—White Salmon, Washington
 Filan, Leona—Walla Walla, Washington
 Fountain, Tunis—Winlock, Washington
 Greenwood, Mildred—Modesto, California
 Greenwood, Wayne—Modesto, California
 Hamann, James—Cicero, Illinois

Hamar, Boyd—Chelan, Washington
 Hamar, Leo—Hamilton, Montana
 Hodges, Evelyn—Buckley, Washington
 Humphrey, Gene—Kettle Falls, Washington
 Irwin, Barbara—Ridgefield, Washington
 Jacobsen, Stanley—Seattle, Washington
 Joos, Arthur—Seattle, Washington
 Lanegan, Alvon—Depoe Bay, Oregon
 Leighty, Albert—Grandview, Washington
 Lindseth, Oscar—Cosmopolis, Washington
 Lopas, Gerald—Everett, Washington
 Lunde, James—Puyallup, Washington
 Manke, Wilda—Portland, Oregon
 McComb, Roxy—Sequim, Washington
 Mustard, Fay—Tonasket, Washington
 Phillips, Vivia—Port Antonio, Jamaica,
 B. W. I.
 Portin, Lloyd—Portland, Oregon
 Quanrud, Percy—Seattle, Washington
 Redlin, Delores—DeSart, North Dakota
 Rice, Charles—Olympia, Washington
 Rinell, Louise—Buckley, Washington
 Robbins, Peter—Blaine, Washington
 Schroeder, Joyce—Ferndale, Washington
 Sutherland, Bonnie—Kingston, Washington
 Teeter, Donald—Yakima, Washington
 Telecky, Stanley—Ritzville, Washington



SENIOR CLASS

Altura, Yvonne—Rome, Italy
 Anderson, Arden E.—Silverton, Oregon
 Arcangeli, Maria—Rome, Italy
 Armstrong, Phyllis Marie—Clarkston,
 Washington
 Arneson, Jacob—Egersund, Norway
 Atkinson, Loraine F.—Yoncalla, Oregon

Baldwin, Bernard L.—Homedale, Idaho
 Barron, Vivian—Valier, Montana
 Bennett, Donna Jean—Boring, Oregon
 Bishop, Gertrude M.—Richland, Washington
 Blackledge, Alice M.—Hay Springs, Neb.
 Bogue, Dorothy N.—Anacortes, Washington
 Brubaker, Minnie Dee—Winlock, Wash.

Bunney, Lucille R.—Anacortes, Washington
 Capps, Burton—Tacoma, Washington
 Childs, Dorothy M.—Anacortes, Wash.
 Clark, Marvin—Yakima, Washington
 Crane, Phyllis E.—Belt, Montana
 Davis, Albert C.—Centralia, Washington
 Davis, Delores C.—Centralia, Washington
 Devin, Florence Ruth—Seattle, Washington
 Everson, Donald E.—Seattle, Washington
 Faulkenburg, Russell D.—Loma, Colorado
 Fiddler, Betty Jean—Sequim, Washington
 Filan, Anita M.—Walla Walla, Washington
 Foster, Hoyt A.—Marsing, Idaho
 Freitas, Leslie Herman—Tacoma, Wash.
 Gaetz, Delia E.—Edmonton, Alberta,
 Canada
 Garrett, Harry S.—Libby, Montana
 Haner, Milton—Aberdeen, Washington
 Hartman, Richard W.—Marysville, Wash.
 Haselwood, Olyve Louise—Sedro-Woolley,
 Washington
 Hayes, Lindsey T.—Jackson, Ohio
 Heppner, Allan Ward—Vancouver, B. C.
 Herbaugh, Georgia Lee—Mount Vernon,
 Washington
 Hinshaw, Robert—Puyallup, Washington
 Hinshaw, Wilma—Puyallup, Washington
 Jackson, Alma C.—Sidney, Montana
 Janzen, Herman R.—Turner, Oregon

Jones, Dorothy G.—Portland, Oregon
 Kirsch, Charles B.—Burton, Nebraska
 Kirsch, Marian H.—Burton, Nebraska
 Kleiven, Helen Vanita—Hoquiam, Wash.
 Lanphear, Howard D.—Spokane, Wash.
 Lanphear, Philip L.—Spokane, Wash.
 Little, Robert W.—Seattle, Washington
 Marek, Adele L.—Buffalo, New York
 Martin, Anna Jean—Hamilton, Montana
 Meador, Gordon—Seattle, Washington
 Monroe, Paul C.—Valentine, Nebraska
 Newton, Ben E.—Omak, Washington
 Oberg, Ethel C.—Ridgefield, Washington
 Payne, Doris L.—Seattle, Washington
 Pitts, Mildred Mae—Wenatchee, Wash.
 Rhymes, William—Winslow, Washington
 Richards, Claire T. Jr.—Paonia, Colorado
 Scoggin, Charlotte K.—Pomeroy, Wash.
 Smith, Eutallah R.—Sequim, Washington
 Stevens, Vera Lee—Tonasket, Washington
 Swope, Robert L.—Aloha, Oregon
 Tague, Robert D.—Seattle, Washington
 Taylor, Kenneth D.—Marysville, Wash.
 Tursa, Peter E.—Brooklyn, New York
 Ulrich, Herbert J.—Napavine, Washington
 Varney, Harry—Cathlamet, Washington
 Veland, Melvin—Everett, Washington
 Wilson, Rosella E.—Council, Idaho



FOURTH YEAR CLASS

Barrans, Wayne—Valley, Washington
 Berry, Loyd—Seattle, Washington
 Berry, Marie—Seattle, Washington
 Bixler, Ralland—Seattle, Washington
 Bjur, Verle—Ridgefield, Washington
 Busch, Robert—Seattle, Washington
 Deweber, Hubert—Pasco, Washington
 Edler, Mary—Olds, Alberta, Canada
 Emerson, Russell—Hoquiam, Washington
 Foster, Mary—Marsing, Idaho
 Hagglund, Delmer—Everett, Washington
 Heimbuch, Howard—Vancouver, Wash.

Higbee, Russell—Richmond, California
 Kelly, LeRoy—Seattle, Washington
 Langford, Marvin—Payette, Idaho
 Lusher, Frank—Montour, Idaho
 Madson, Eugene—Parkland, Washington
 Nelsen, Walter—Mirror Lake, Washington
 Rice, Walter—Green Castle, Pennsylvania
 Smith, Donald—Lewiston, Idaho
 Teeter, Robert—Seattle, Washington
 Vath, Lewis—Sunnybrook, Alberta, Canada
 Whitfield, William—Sweet Home, Oregon



SPECIAL STUDENTS

Ackerman, Lucille—Portland, Oregon
 Bateman, Charles R.—San Diego, California
 Beebe, Donald—Buhl, Idaho
 Beetchenow, Theodore—Omak, Wash.
 Bradley, Earl—Tonasket, Washington
 Coffman, Shirley—Mount Vernon, Wash.
 Crawford, Kenneth—Tulsa, Oklahoma
 Erlandson, Robert—Yakima, Washington
 Govier, Richard—Chehalis, Washington
 Henry, Lorraine—Buckley, Washington
 Houghton, James—Seattle, Washington
 Heppner, Joyce—Vancouver, B. C.

Jackman, Kenneth—Seattle, Washington
 Jordon, Jack—Benton, Arkansas
 Littrell, Jack—Eugene, Oregon
 Odle, Glen—Renton, Washington
 Payne, Dora—Seattle, Washington
 Redlin, Orville—DeSart, North Dakota
 Salmi, Ruth—Warrenton, Oregon
 Satrang, Arne—Honefoss, Norway
 Smith, Doris—Chehalis, Washington
 Stedman, Samuel—Kendrick, Idaho
 Steller, Archie—Seattle, Washington
 Varney, Lois—Cathlamet, Washington

