

NORTHWEST COLLEGE . . . a College Fulfilling its Mission

Northwest College rests on the foundation of the Great Commission of our Lord epitomized in three imperatives . . . "go" . . . "baptize" . . . "teach."

Three presidents have stood at the administrative helm of the College—each making a distinctive contribution to its development and growth. Founding President, Dr. Henry H. Ness, gave the impetus and the kind of leadership needed to thrust the fledging College forth and to establish its basic goals, spirit and character during its first fifteen years. Second President, Dr. C. E. Butterfield, gave leadership and brought to Northwest the strength of regionalization of its constituency and governing body. During his eighteen year administration professional accreditation was attained; the curriculum was further enriched to meet the emerging needs of the times; a new multi-million dollar campus was acquired and developed. These were the developing years . . .

Under the College's third and present President, Dr. D.V. Hurst, have come years of consolidation, refinement and continued development. Regional accreditation has been gained; the enrollment has grown; the faculty has been increased in number and strengthened academically; additional property has been secured; a master plan for the campus has been developed and updated; the region was enlarged with the inclusion of Alaska and Wyoming; seven major building programs, including a one-million dollar library, were completed; and many advances in the academic and professional programs of the College were realized.

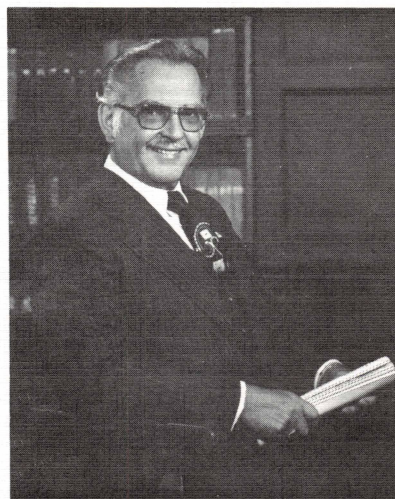
The history of Northwest College strongly suggests it is a building fitly framed together. Jesus Christ is its Chief Cornerstone . . . its Master Builder . . . its central classroom figure . . . its Great Teacher. . . As its walls have risen, its purposes and programs have unfolded and its students have filled its halls and then gone from them it has become clear that Northwest College is more than a building of wood and stone. It is people framed together in a spiritual house, people on an eternal, spiritual mission. Planted in the hearts of students, as a seed, has been the same spirit, vision, commitment and persis-

tence that moved the College founders, so that they, too, have "gone, baptised an taught."

From the time of its inception in October, 1934, the College's reason-for-being has been evangelical and missionary in character. With a beginning enrollment of 18 students on its opening day the College set a new record of 688 the fall of 1977. Through the years the cumulative enrollment has reached over 7,000 students. They have gone to nearly every mission field and region of ministry on the face of the earth. Truly, the Light does shine out from Northwest College.

As Northwest College turned the page of its fourth decade—and now moves along in its fifth it looks to the future with confidence. It has built well. Its accomplishments have been many. It is *still on course* without change of purpose. Its programs have been greatly enriched. Its enrollment has grown. Its marks of academic excellence are most evident in its dual accreditation. Its influence is constantly expanding.

Yes, there are new challenges! But faith says, "These challenges will be met!"



President Dr. D.V. Hurst came to Northwest in 1966 and has already served the College over a full decade. He brought with him a background of fifteen years of church administrative and executive leadership. He had also taught in two other Assemblies of God Colleges. He was recognized as a writer, conference and camp speaker and administrator. Under his leadership the College has continued to grow and develop on the same foundation of mission and purpose on which it was established over four decades ago.

The strength of faculty and administration is measured in excellent Christian Commitment, in a total of 521 years of ministry, an aggregate of 306 years of service to Northwest College and in academic accomplishments. The average length of service to Northwest College for these faithful people is eleven years. Almost all teaching faculty have one or more Master's degrees

and seven hold earned Doctoral degrees (or candidate status). The academic strength of the faculty is largely responsible for the level of dual accreditation enjoyed by Northwest College — both professional with the American Association of Bible Colleges, and general with the Northwest Association of Schools and Colleges.

Leading Northwest College in its Administrative Council are:

Seated left to right: *Development Director, Reverend H.W. Crowder*, who came in 1955, served for many years as Business Manager. He figured strongly in the acquisition of the Kirkland campus. For the past ten years he has traveled extensively in stewardship seminars. He brings an example of faith and spirit to the work.

Academic Dean, Dr. Frank B. Rice, came in 1962 and for the past ten years has served as Dean. His long experience as teacher and keen Bible College philosophy give strength as he heads in development of instructional programs.

President, Dr. D.V. Hurst

Dean of Admissions and Registrar, Dr. Amos Millard, came in 1949 and holds the distinction of longest tenure on campus. His many talents provide a rich resource to the College. His faithfulness challenges all.

Business Manager, Reverend Owen S. Hodges, served as District Secretary in Montana for fourteen years and then joined Northwest in 1967. His sterling Christian character and commitment make him a shining example of Christian gentlemen.

Standing: *Public Relations Director, Reverend Robert Griffin (Griff)*, came to Northwest in 1975. He is admired by the students and loved by the P.R. groups whom he organizes and schedules. He is a natural as a P.R. man and his is truly a labor of love.

Dean of Students, Reverend Waymon ("Tex") Rutledge, joined Northwest College in 1977. After many years of pastoring he served the State of Oregon in corrections consultation. His sense of humor and his relaxed approach have quickly carved his place at Northwest.

Stewardship Consultant, Reverend Woodrow Fletcher, came to Northwest College in 1976. He pastored eight churches and founded three. His genuine manner has already won a place of effective service within the College constituency as he works in planned giving Seminars.

These men provide leadership for Northwest College along with the faculty and under direction of the Board of Directors. Their records of tenure speak of stability and strength as they seek to serve God and Northwest in the days ahead.

Following is the faculty with teaching fields and years at Northwest College.

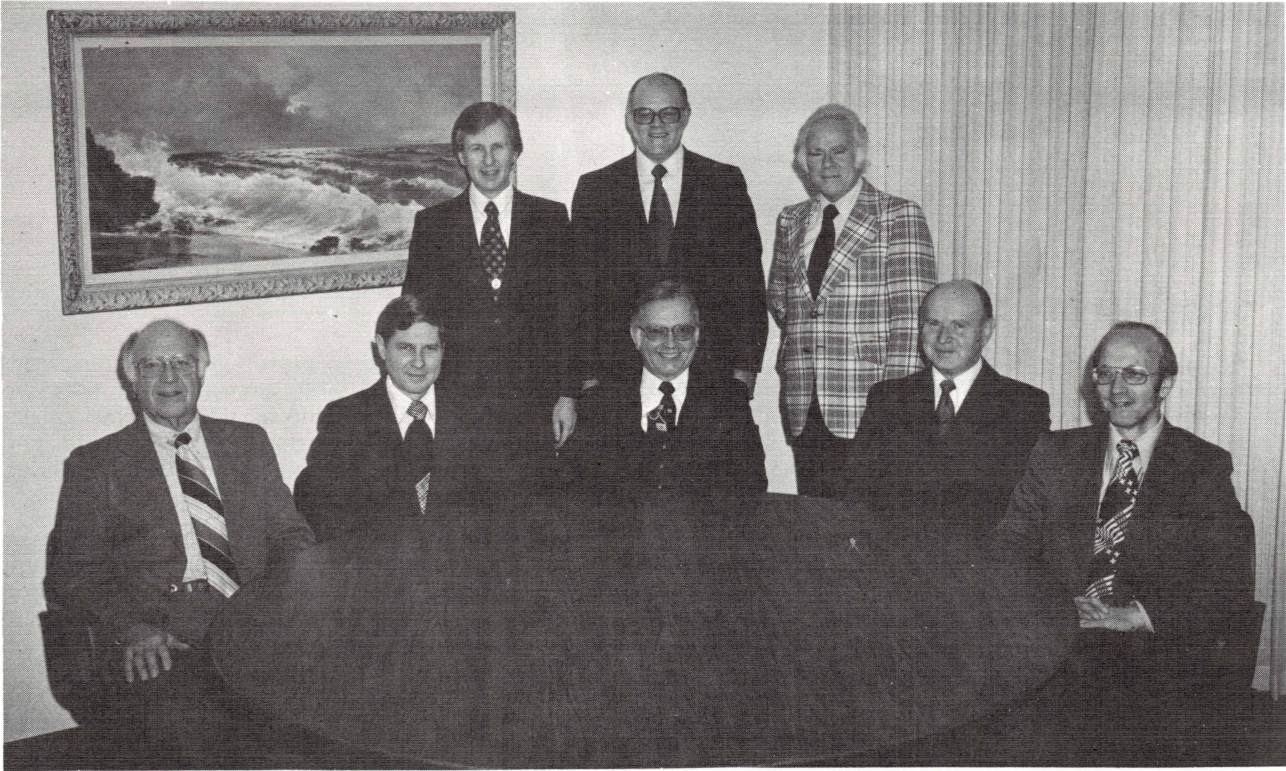
FIRST ROW: Left to Right — *Rev. Owen Hodges*, Business Manager, eleven years; *Professor Esther Harmon*, Business, twelve years; *Dr. D. V. Hurst*, President, twelve years; *Professor Dwaine Braddy*, Pastoral Studies, one year; *Mrs. Julie Meier*, Acting Librarian, one year; *Professor Shirley Clark*, Early Childhood Education, five years.

SECOND ROW: *Dr. Amos Millard*, Old Testament History and Biblical Archeology, twenty-nine years; *Dr. Frank Rice*, English and Literature, sixteen years; *Dean Bessie Guy*, Christian Education, twenty years; *Professor Robert Abbott*, Missions, one year; *Professor Maxine Williams*, Spanish and Christian Education, twenty-eight years; *Dr. Robert Parlotz*, Counseling Ministries, one year; *Rev. Robert Griffin*, Public Relations Director, three years.

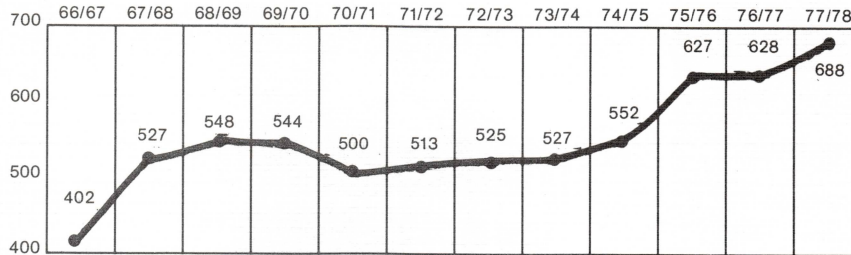
THIRD ROW: *Professor LeRoy Johnson*, History and Political Science, eleven years; *Professor Phil Gustafson*, Chemistry and Mathematics, twelve years; *Professor Francis Thee*, Biblical Studies, fifteen years; *Professor Orville Clark*, Social Studies, seven years; *Rev. Herbert Crowder*, Director of Development, twenty-four years; *Rev. Waymon Rutledge*, Dean of Students, one year.

FOURTH ROW: *Dr. Robert Swaffield*, Sacred Music, nine years; *Dr. Daniel Pecota*, New Testament Greek and Theology, twenty years; *Professor Kristi Brodin*, Physical Education, eight years; *Dr. John Pope*, Philosophy and Church History, nineteen years; *Professor Jack Dorwart*, English and Literature, twelve years; *Professor Melvyn Ming*, Christian Education, two years.

FIFTH ROW: *Professor William Randolph*, Biological Sciences, ten years; *Professor Calvin White*, Sacred Music, three years; *Professor Darrell Hobson*, Biblical Studies, five years; *Professor Carl Kinney*, Physical Education, six years; *Professor Dan French*, Communications, two years.



The record of fall enrollments at Northwest for the past decade shows a growth trend



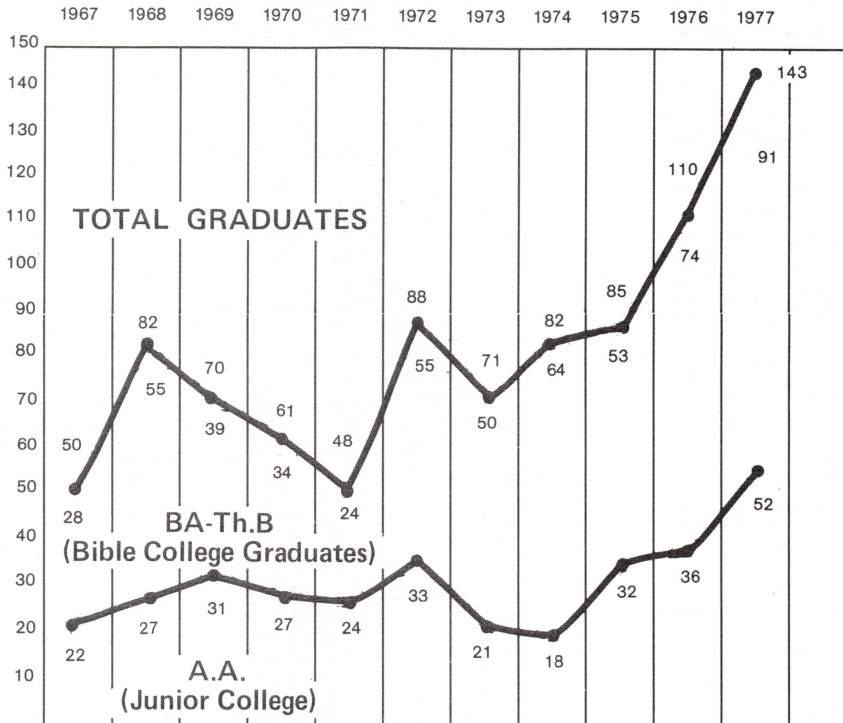
A major economical slump paralleled the drop in the 1970-71 year. The recovery which followed was slow. However, the gains in the past few years have been significant, especially in 1975 when we grew 75 and now in 1977 when we have grown 60. They closely compare to 1967 when we grew 65. Last year we held even.

Of the total enrollment 73% is now enrolled in the Bible College Division. This year among new freshmen, the Junior College enrollment held up to 44% of the 305 Freshmen enrolled. Not only are new Freshmen enrollments up (13%) from last year, the

Sophomore enrollments are up by 11%; Junior enrollments are up by 27%. Senior enrollments are down slightly but will climb as third quarter Juniors achieve senior standing during the year after the current quarter. The number of men students is up by 2% from last year.

Of more interest, however, than the statistics is the spiritual impact they represent. They represent young people — heading for the ministry! Young people who have heard the call of God, who desire to give themselves . . . to prepare . . . to go! The Church they represent is alive and well.

Graduates show the same growth trend



The number of total graduates over the last decade has shown a good trend. Although not a steady increase, there has been a significant growth. Reaching an all time record of 91 four year grads and 52 two year grads in 1976 was cause for thanksgiving to God.

It's also significant that the prospect of graduation from Northwest College once a student has enrolled has increased sharply. Within the last decade two five-year studies were conducted. The ratio of

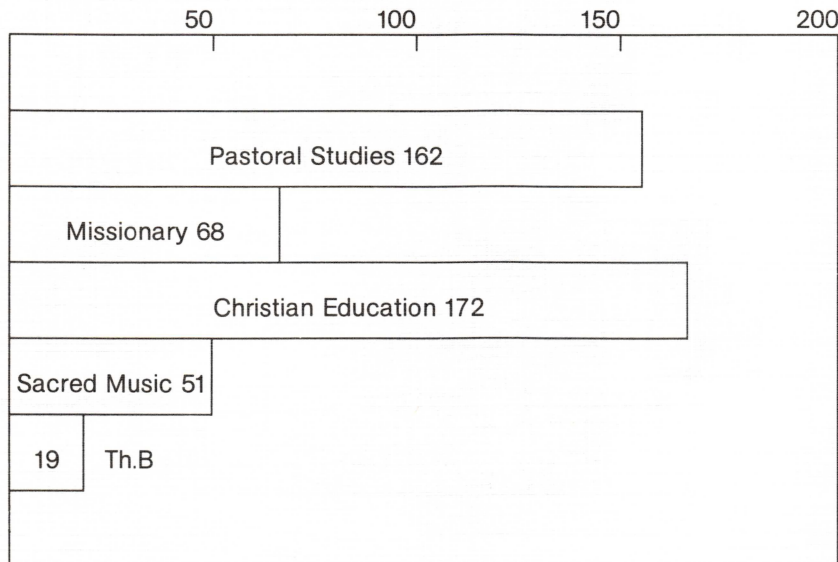
graduates to matriculants has risen each of the last five years. Of the 1969 freshmen a total of 25% graduated; 1970 - 33%; 1971 - 35%; 1972 - 43%; and 1973 - 55%.

It is the students who work through an academic program, who fully prepare themselves that make the impact in the church in Christian Service. It's the number of graduates and the ratio of graduates to enrollees that really tell the story of a college.

THE BIBLE COLLEGE GRADUATES

The total of 518 students have graduated from the four year program during the last ten years. An additional 19 have graduated from the fifth year Th.B program. This graph shows the number that have

gone through the various academic programs. Records show that 85 to 90% of these graduates either go into the ministry or on to graduate studies and then into the Ministry.

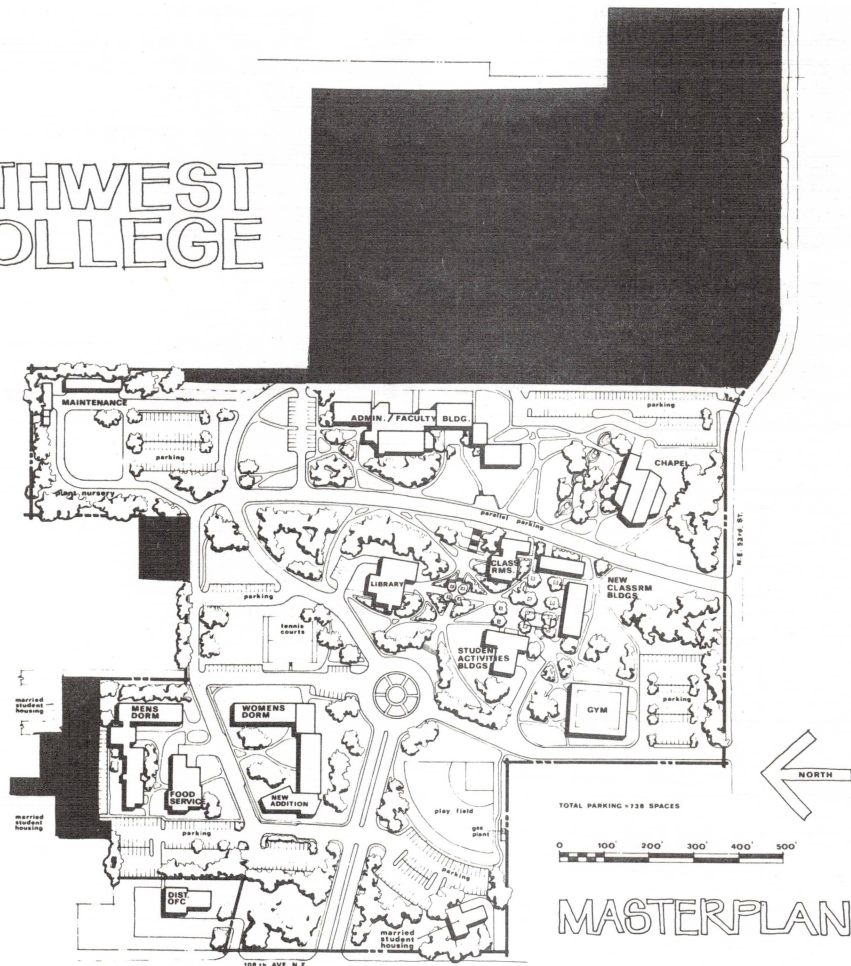


CURRICULUM DEVELOPMENT

During the decade significant curriculum and faculty staffing improvements were made. Although Northwest College had the courses and required them, the general education patterns were more clearly articulated in response to the Northwest Association of Schools and Colleges' recommendations. Subsequently Northwest was accredited by that body. The Missions Program has been improved and strengthened in faculty resource. The Christian Education major was developed and faculty resources were en-

riched—with strong C.E. background. The Early Childhood Education program was added. A strong Pastoral Counseling program was developed and added. The Sacred Music minor was expanded to a Major and greatly strengthened. The Pastoral Studies minor was expanded and redeveloped making a very comprehensive and practical Pastoral Studies program. District Superintendents, Pastors and Associates and educators worked together to develop this major. It has been well received by the students.

NORTHWEST COLLEGE



MASTER PLAN

From 35 acres the campus has been increased to 55 during the decade, a 57% increase. Purchases from as small as one lot to as large as ten acres through the years have made this possible. The Board of directors has set a goal of consolidating the borders. This may result in a few more small purchases. The current value of the campus land alone is at least \$1,100,000. It is situated strategically in the heart of the Puget Sound area and the great Northwest, a beautiful campus overlooking Lake Washington and the Olympic Mountains.

The value of the campus as it presently stands and in terms of the cost of land, buildings and equipment, etc. (total assets), when acquired or erected

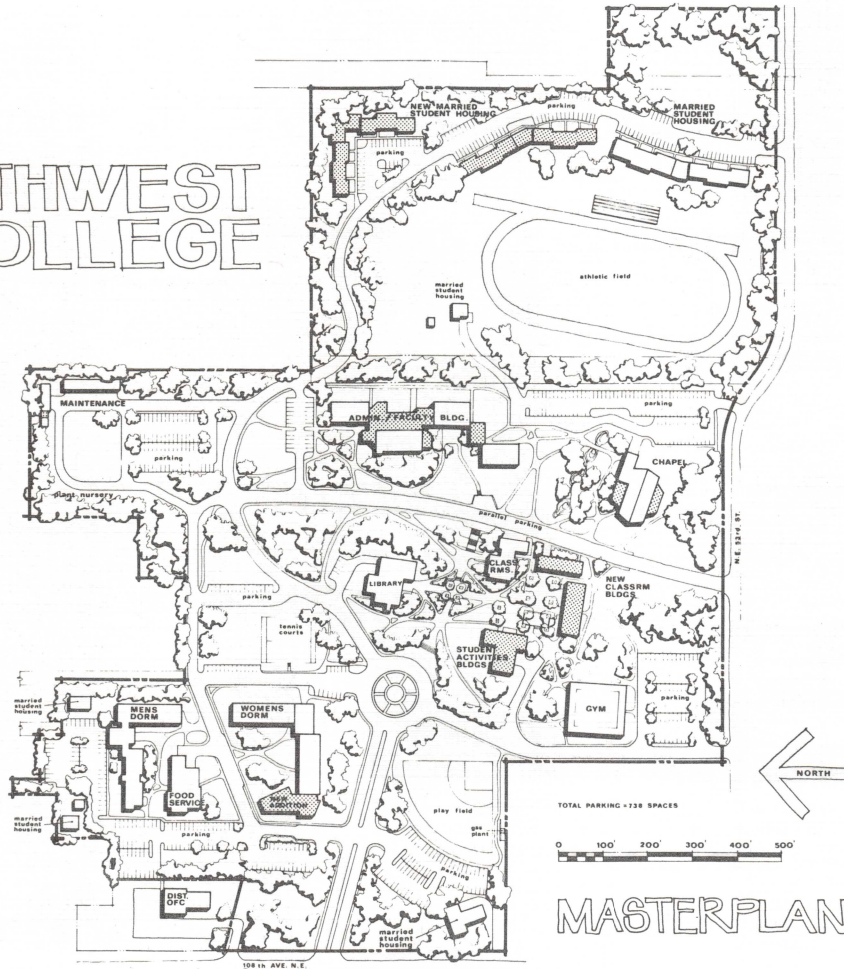
is \$4,597,792. This represents an increase of \$2,577,042 in the past eleven years. The net investment in the plant fund itself has grown from \$1,115,721 to \$2,720,557, an increase of 143%.

In terms of the present day replacement cost the campus would have to be valued at between \$7,500,000 to \$8,500,000!

Truly, God has been good to Northwest College!

When the campus was originally purchased a plan for development was laid out. Completion of planned buildings, growth of the College, and the addition of property necessitated a new comprehensive

NORTHWEST COLLEGE



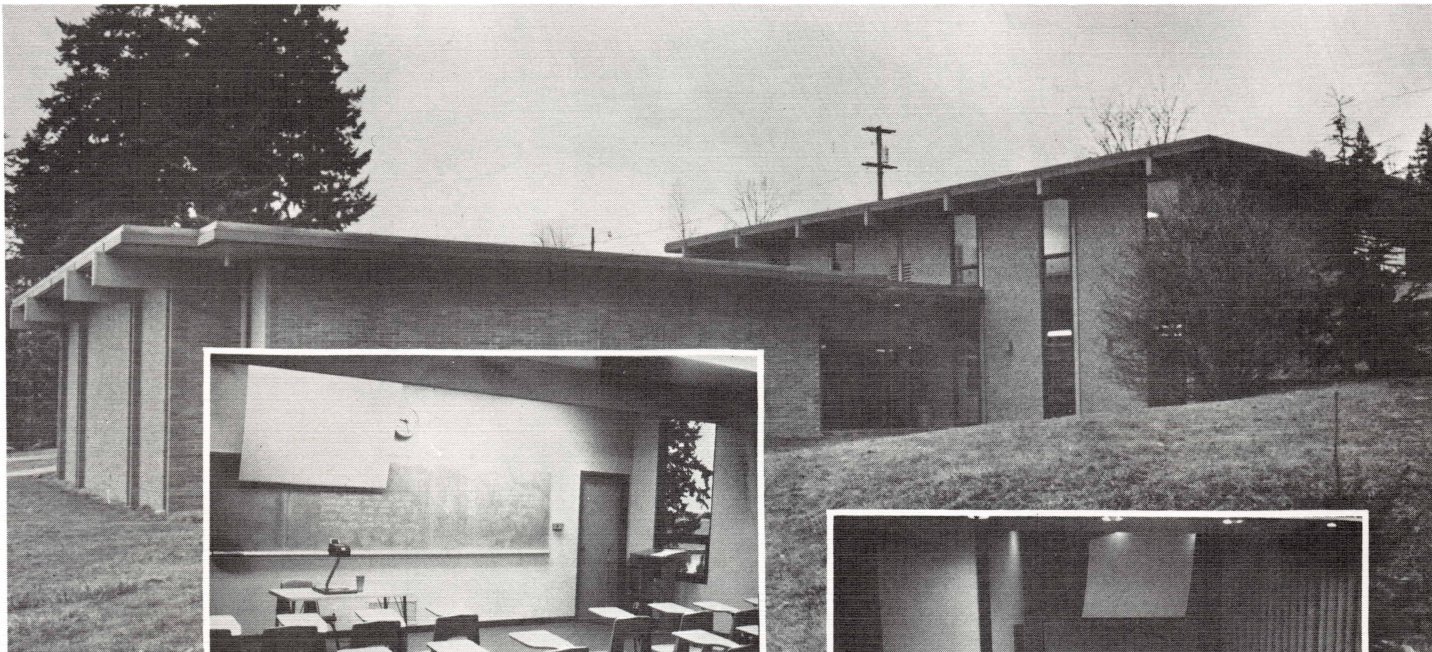
Master Plan. Careful study by the College Planning Commission and architects was done. The new Master Plan was adopted and unveiled in 1970. Since then it has been redeveloped twice; once when ten acres was purchased and after another series of smaller purchases most recently in October, 1977.

There are distinct design and zone concepts in the plan. Buildings are clustered together around each activity or function. There are six clusters: single residential, administrative and faculty, student activities and athletic, spiritual and married student residential. This cluster concept was adopted to preserve open space and retain the quality of the Northwest environment built into the campus.

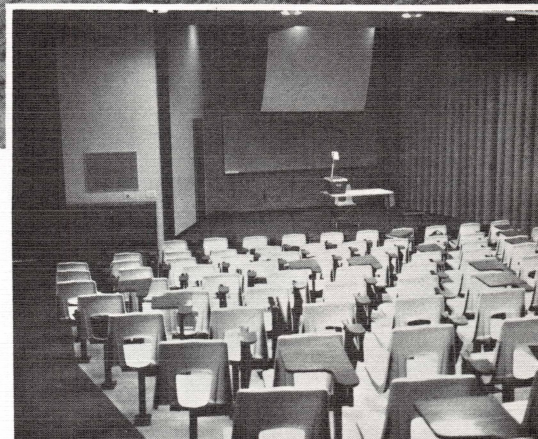
The road and walk system is designed to permit one to enter the campus and go directly to the zone of his choice without penetrating the other zones.

The ultimate plan calls for a strong unifying design force to be situated in the Administrative and Faculty area overlooking the main entrance and serving as central focus of interest. Also significant in the main entrance will be the large pool and jet fountain. The "reaching arms" fountain, located in the upper campus will be moved to the large pool. It will be replaced by a small fountain, enhancing the outdoor student relaxation area.

Thus, there is built into the Master Plan a concept of total environmental design.



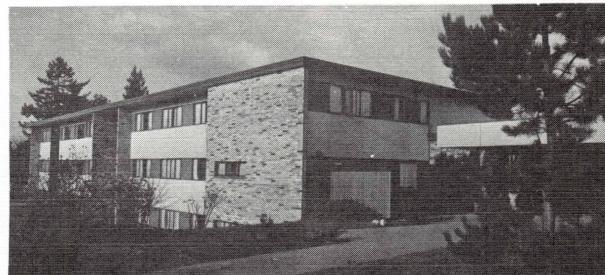
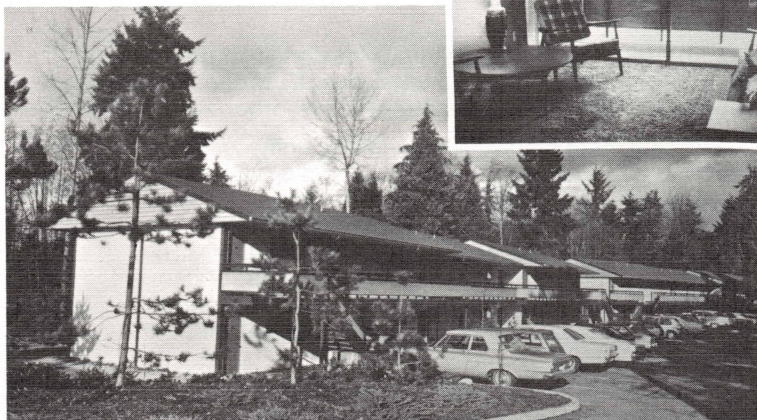
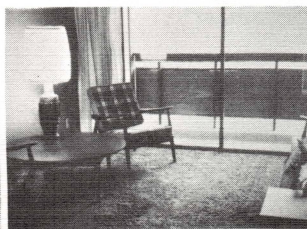
The Learning Center, with three sixty-student classrooms, three faculty offices and two 124 student lecture halls (which combine to make a 248 seat lecture and performance hall), was dedicated in 1969.

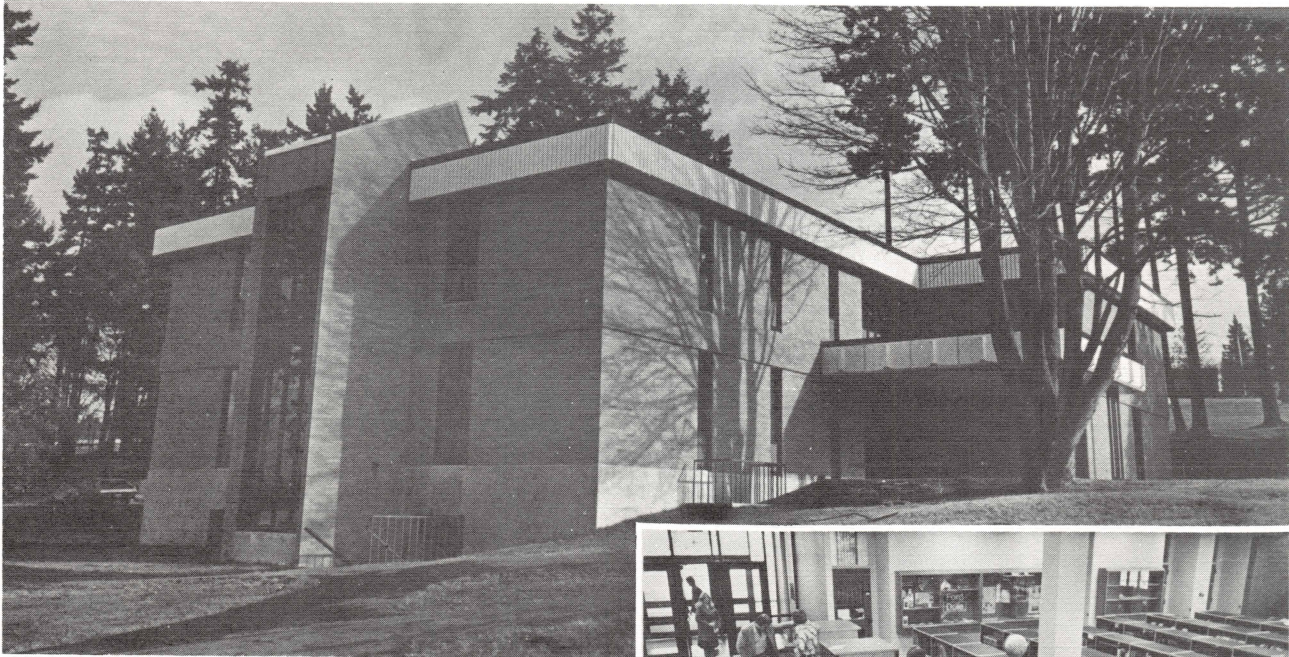


The first two twelve apartment units—R.J. Carlson and D.H. McLaughlin Halls—of The Firs were dedicated in 1973.

Since then the College has been able to add six more individual married student units. These commodious apartments for young married couples have proven to be a real blessing to the students.

Gray Hall, housing 101 men, an Assistant Dean of Men apartment, a prayer chapel and a recreation room, was dedicated in 1971.





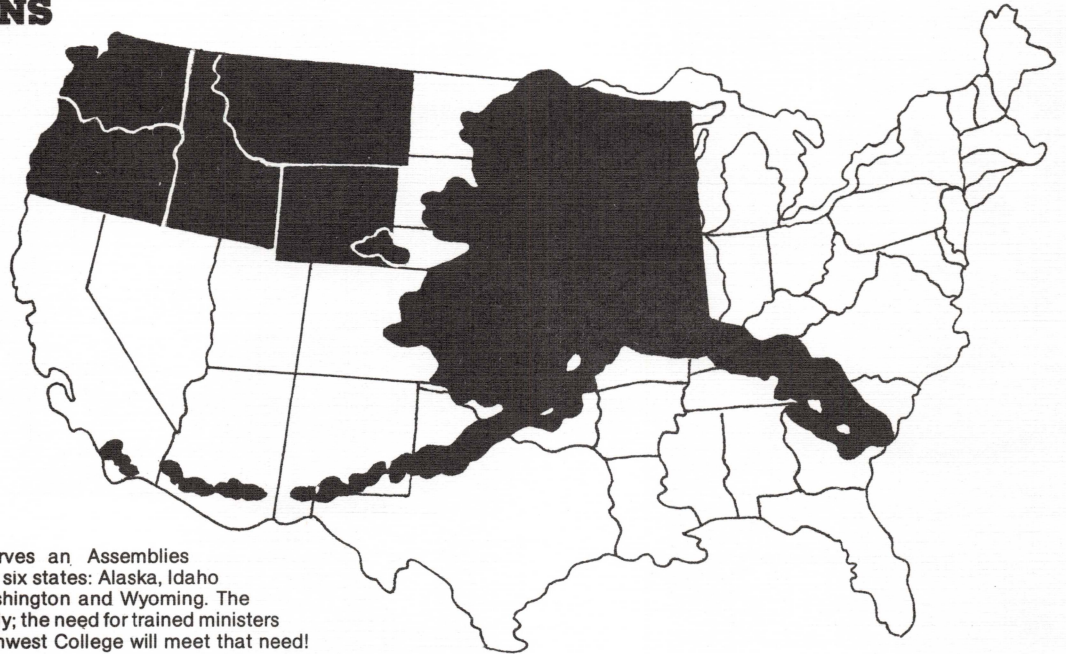
Perhaps the most significant building to be placed on campus, apart from the Chapel, itself, has been the D.V. Hurst Library. It was dedicated in 1976 and by action of the Board of Directors later named in honor of the College's third president at the tenth anniversary of his service to Northwest.

At a cost of almost one million dollars, the three story building includes over 24,000 square feet of space. The two floors now in use provide space for 75,000 volumes, two hundred study positions and space for many special services. Also included is a spacious board room divisible into four lovely conference and group study rooms. The most recent campus addition is the new Dorothea Amundsen Music Center. Located in the first floor of the Chapel (former library location), it provides 6,500 square feet of space. It includes two classrooms, one choir room and recording studio with control room, thirteen applied music practice rooms, four faculty offices, a conference room and a secretary's office. Also provided is a spacious Music Center foyer.

An inside photo of part of the equipment in the control room at the recording studio of the Music Center.

The Book Store

OPERATIONS



Northwest College serves an Assemblies of God constituency of six states: Alaska, Idaho, Montana, Oregon, Washington and Wyoming. The church is growing rapidly; the need for trained ministers is growing with it. Northwest College will meet that need!

The current, annual operational Budget of Northwest College is \$1,750,000. This includes approximately \$800,000 for salaries and benefits, \$110,000 for Maintenance, \$576,000 for auxiliary enterprises (cafeteria, residences, bookstore, etc.) and \$235,000 for debt service, and other.

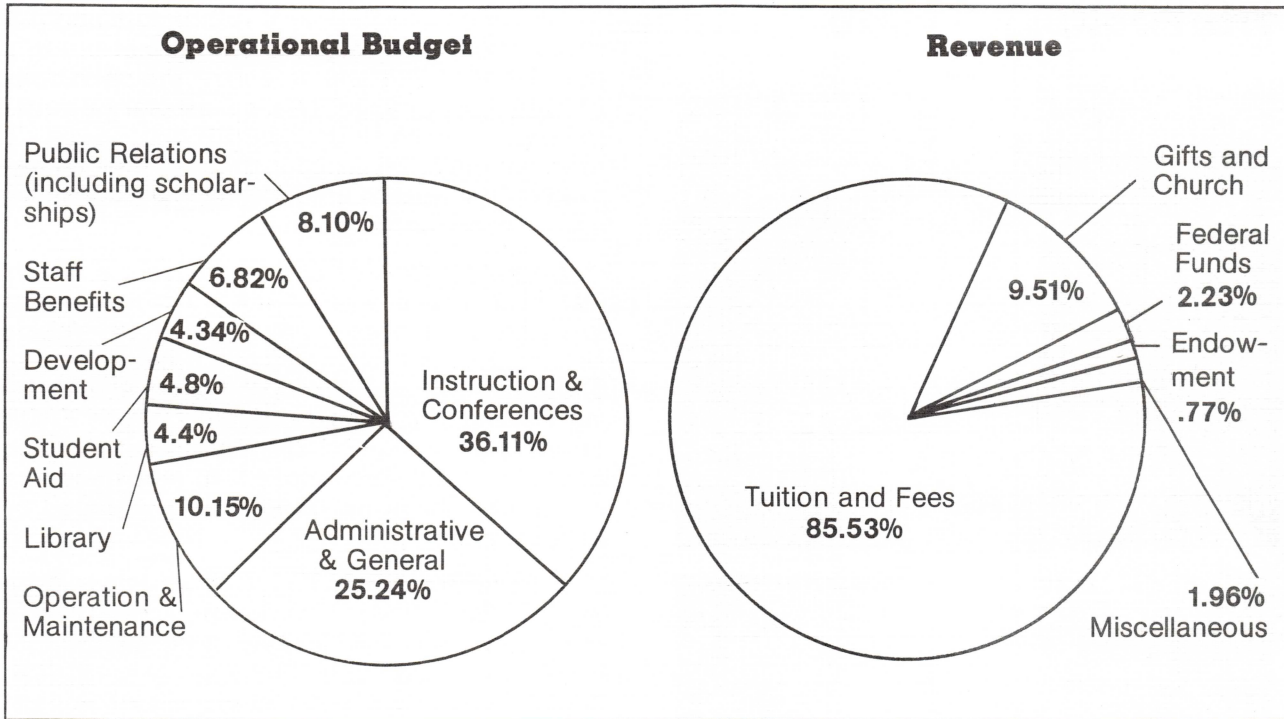
Strict attention to the College's financial operations and position includes twice yearly scrutiny of the entire budget and financial reports by the Board of Directors and its finance committee. Also, the internal budget committee does a full monthly analysis and weekly spot analyses. Needed adjustments are made during the year. Every effort is made at keeping costs as low as possible and making education available to young people as reasonably as possible.

The result has been the College has been in the black all but one of the past eleven years. It has shown a moderate but helpful surplus in

all but one of the remaining ten years. Also, maintenance and carpet and equipment replacement reserves have been developed which will provide for future needs.

The College continues to strive to find ways of reducing costs and increasing income from various sources. The accompanying graph shows three significant things:

1. **The student is required to pay too large a percentage of his educational cost.**
2. **There is urgent need to build the College endowment so that there will be larger subsidy coming to the general operations each year from this source.**
3. **There is a need for a significant increase in annual contributions from present and additional sources for the every day work of the College.**



Note: These comparisons exclude the auxiliary enterprises — Residence Halls, Food Service, Bookstore, etc. — which are self-sustaining.

CAMPUS DEVELOPMENT NEEDS

Enrollment growth has put new pressure on the existing buildings. Almost in every function on campus there is need for additional facilities. Recent studies show that these immediate needs include.

- * One twelve-unit married student residence hall.
- * The enlargement of the Administrative/Faculty Complex.
- * Enlargement of the Chapel.

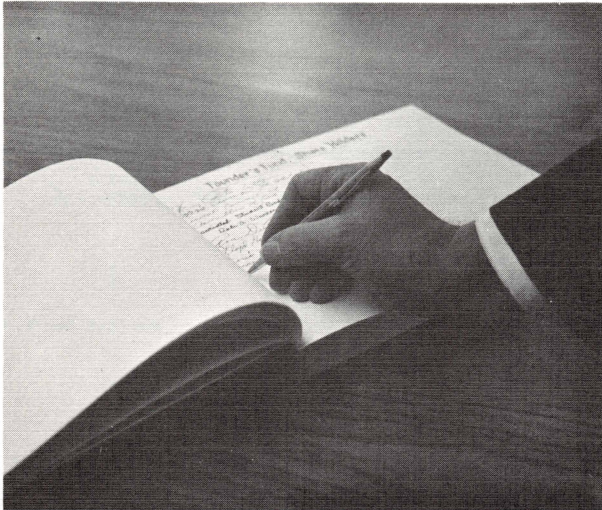
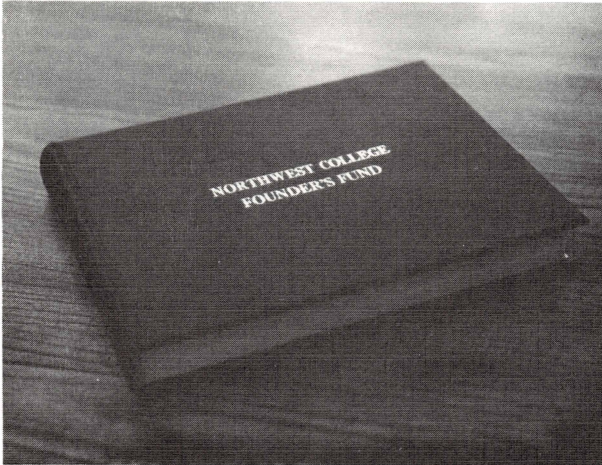
* Development of residence rooms in Perks Hall and two temporary classrooms in the first floor of the library. (This will provide for excellent use of this space until needed for the library function.)

* Development of the new entrance.

* Development of the athletic field.

The cost of all these improvements and additions will be at least one million dollars. The challenge is big—**BUT GOD IS BIGGER!**

THE FOUNDER'S FUND



Pictured in the launching of the Founder's Fund in April, 1977 are Dr. and Mrs. C.E. Butterfield, Mrs. Henry Ness, Dr. and Mrs. D.V. Hurst and Lay Council President, Wes Johnson.

Now the College Board of Directors and Administration have said it is time to set out in a new direction. *It is time to endow the operations of Northwest College.* This is necessary in order to further enrich and undergird the programs, to insure the continuing functions of the College, to keep the cost to students as low as possible and to raise faculty salaries.

Northwest College desires to avoid a "crash, let's keep it alive" kind of funding drive. It hopes to build steadily as it has through developing NOW a growing cash and other assets kind of endowment fund that will produce ever increasing earnings for subsidizing the College EACH YEAR! This is called the Northwest College Founder's Fund. Its purpose is to perpetuate the mission of Northwest College as envisioned by its founders!

Until very recently it had to be said that Northwest College had no endowment fund. However, gradually the annuity and endowment funds have grown until they aggregate approximately \$350,000 in cash assets, life income estates, as well as regular faculty writing, and scholarship endowments, etc.

Instead of raising funds for plant or campus development the next few years, the Board of Directors has authorized raising cash and other assets for the Founder's Fund. A goal of \$1,000,000 in cash and assets has been set for April 1980!

A Founder's Fund share is \$1,000, payable in three years at \$333 per year. Individuals, churches, districts—anyone who will—are invited to subscribe to at least one share. All who have participated in the Chapel and Library Share drives of the College are especially urged to participate.

A Founder's Fund share certificate will be given to the donor and a record of his gift will be made in the Founder's Fund book.

The important thing to remember is this: A gift to the Founder's Fund will never be spent. It will be an investment in ministry training. The earnings it generates will go to support the general operations of the College each year. This is the real work of preparing young people for the ministry!

