

BULLETIN OF NORTHWEST COLLEGE
OF THE ASSEMBLIES OF GOD



GENERAL

INFORMATION



Scene on the campus of NORTHWEST COLLEGE.

Founded in 1934, NORTHWEST COLLEGE was the answer to a need long felt throughout the Northwest District of the Assemblies of God for a Bible training institute. From 18 students who enrolled on the first day on October 1, 1934, the aggregate students during the past several decades of the school's history has grown to several thousand students. Of this number, over 200 have gone forth as missionaries; several hundreds have been trained for pastoral and evangelistic ministries; and several hundreds more have been trained as effective lay-workers in local churches.

Since 1955 the college has offered several programs of study in the liberal arts and pre-professional fields in order to provide additional educational opportunities in a distinctively Christian atmosphere.

In 1959 the college moved to its new campus in Kirkland. Overlooking beautiful Lake Washington with the panorama of the snow-clad Olympics in the background, this beautiful wooded campus of thirty-five acres provides a superb location wherein to study and to worship, and to enjoy Christian fellowship.

BIBLE COLLEGE

The programs of study in the Bible College are designed to prepare the student for the ministry in the fields of pastoral and evangelistic work, Christian education, sacred music and missions. The following is a brief description of each of the seven curricula offered in the Bible College:

BIBLE MAJOR WITH THEOLOGY MINOR

A four-year program leading to the Bachelor of Arts degree. It is designed to train the student for a ministry of preaching and teaching the Word of God. It includes a concentration in Bible, Theology and professional studies together with a broad foundation in liberal arts.

BIBLE MAJOR WITH MISSIONS MINOR

A four-year program leading to the Bachelor of Arts. Gives the student a broad foundation in general education and Bible together with orientation studies in preparation for missionary work.

BIBLE MAJOR WITH CHRISTIAN EDUCATION MINOR

A four-year program leading to the Bachelor of Arts degree. It is designed to train Christian education directors, child and youth workers, and Sunday school workers and administrators. Includes a concentration in Bible and professional studies in Christian education together with a broad foundation in general education.

BIBLE MAJOR WITH SACRED MUSIC MINOR

A four-year program leading to the Bachelor of Arts de-

JUNIOR COLLEGE

The Junior College provides educational opportunities of two types—(1) For those who desire to pursue training for some profession or vocation other than the ministry, and (2) for those desiring terminal training in Bible and related fields for lay service in the local church. Pervading all these programs of study are some foundational courses in Bible, doctrine, and practical theology designed for the personal spiritual development and Christian service development of the student. The following is a brief description of each of the six curricula offered in the Junior College:

PRE-LIBERAL ARTS

A two-year program leading to the Associate in Arts degree. It is designed to give the student foundational studies in the pursuit of a college major in some field of liberal arts, such as history, philosophy, political science, social studies, political science or speech. It is a flexible type program, permitting the student to adapt his courses to a selected field of study.

PRE-EDUCATION

A two-year program leading to the Associate in Arts de-

GE PROGRAMS

gree. It is designed to train ministers of music, choir directors and church musicians. This program includes a concentration in Bible and Music (theory, applied music and ensemble music) together with a broad foundation in general education.

PASTORAL COURSE

A four-year non-language program leading to the Bachelor of Science degree. This program lays stress on Bible and Theology together with professional studies for a pastoral ministry.

CHRISTIAN EDUCATION-MUSIC COURSE

A four-year, non-language program leading to the Bachelor of Science degree. It is designed to train the student for a combination ministry of Christian education and music in the local church. The emphasis is on Bible, professional studies in Christian Education and music, and general education.

BACHELOR OF THEOLOGY PROGRAM

A five-year program leading to the Bachelor of Theology degree. This is an advanced program in theology which is built upon the same curriculum leading to the B.A. in Bible and Theology, but offers advanced studies in Bible, Biblical language, Theology and Church history. It approximates the curricular scope of a seminary program, though on the undergraduate level.

GE PROGRAMS

gree. This is a two-year pre-professional type program for those who desire to prepare to teach school. It gives the student his or her basic liberal arts together with foundational courses in education.

PRE-MUSIC EDUCATION

A two-year pre-professional program leading to the Associate in Arts degree. It is for those who desire to teach music or to prepare for a career of music. It includes basic liberal arts courses, music theory courses and some education courses.

PRE-SCIENCE

A two-year program leading to the Associate in Arts degree. This is a transfer program for those planning to pursue a field of study leading to Bachelor of Science or similar degree. It gives emphasis to physical science, life science, and mathematics, and includes basic college courses in the humanities and social sciences. This program is adaptable according to the specific future educational and vocational goals of the student.

PRE-NURSING

A one-year non-degree program for those planning to go into nursing. It offers foundational studies in liberal arts and chemistry for nurses' training. This program is adaptable according to the requirements of the respective school of nursing to which the student plans to transfer.

RELIGION

A two-year terminal program in Bible and related courses leading to the Associate in Arts degree. It is designed for the training of Christian lay-workers for service in the local church. This program also affords the student "grounding" in the Word of God and in the basic doctrines of the Pentecostal Christian faith.

BULLETIN OF NORTHWEST COLLEGE

of the Assemblies of God

Kirkland, Washington

OFFICE OF ADMISSIONS
N.C.

Please Send

Catalog

Application Form

Further Information Concerning: _____

Name _____

City _____

State _____

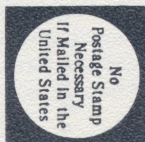
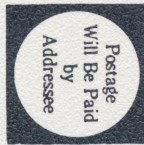
ZIP CODE _____

ADMISSION REQUIREMENTS

The College seeks students who have the purposes and qualifications to benefit from its educational program. Selection is based on academic ability and character qualifications. Applicants must have a vital experience of salvation and be of good Christian character. They must be graduates of a high school or otherwise establish high school equivalency standing through a series of examinations. Applicants must be of sound physical health. Medical examinations are not required except where a serious physical condition may have existed, or where there may be doubt about the applicant's health.

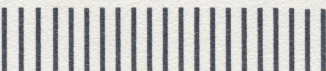
HOW TO APPLY

Persons wishing to apply for admission to the College should write for a catalog and study it. Thereafter they should detach the application form, which is printed in the catalog, fill it out following the instructions printed thereon, and mail it in to the Admissions Office at the College. They should simultaneously write or telephone the high school where they graduated and request a transcript of their high school record to be sent to the College. The College will send reference questionnaires to the applicant's references. Upon receipt of all these materials, the Admissions Committee will review the application and notify the applicant promptly of its decision. Applications should be submitted at least 30 days prior to the beginning of the term of enrollment.



BUSINESS REPLY CARD
First Class Permit No. 89, Kirklund, Wash.

OFFICE OF ADMISSIONS
NORTHWEST COLLEGE
KIRKLAND, WASHINGTON
98033



The college operates on the quarter system -- having three quarter terms in the school year. The approximate starting points of these quarters are as follows: Autumn Quarter--about October 1st; Winter Quarter--about January 1st; and Spring Quarter--about March 15th. Consult catalog for exact dates.

ESTIMATED EXPENSES

The following is a quarterly breakdown of estimated expenses which a student may have during the academic year:

	Autumn	Winter	Spring
Tuition	\$150.00	\$150.00	\$150.00
Fees - Academic	15.00	15.00	15.00
Board and Room	205.00	205.00	205.00
Books (average)	15.00	15.00	15.00
	385.00	385.00	385.00

The fees quoted above are academic fees only and do not include the student and class fees, health fees, or personal expenses.

The tuition charge quoted above is charged for all students carrying a normal load. A tuition charge of \$10.50 per quarter hour is made for less than 12 quarter hours, or for extra hours in excess of 18 quarter hours. The 12-18 credit hour range is covered by regular full-time tuition.

Housing costs on campus are established at the lowest possible rate and include board and room. Single students not commuting from their homes will be placed in on campus residence facilities as far as possible. Married students will be assisted in finding suitable housing in the vicinity of the college. The costs of these facilities will vary according to the type of accommodation, but every effort is made to find low - or reasonably priced accommodations.

STUDENT AID

To assist students finance their education, the College provides considerable help in various forms. The most extensive assistance is through the college employment service. The college maintains an employment office for direct job placement commensurate with calls and employment counseling and guidance to those desiring to make direct application to various business houses in the community for regular part-time employment. This service is rendered free of charge to the students.

A limited number of scholarships are available to qualifying students. Freshman scholarships to those attaining rank as valedictorians, salutatorians, and upper ten-percent rank in their graduating classes in high school are offered in the amounts of \$600.00, \$400.00, and \$200.00 respectively, applicable over a four-year period of enrollment. Foreign students are assisted from the Kerr Scholarship Fund, and limited assistance is available from time to time to preparing for missionary service from another fund.

The College also offers considerable help in the form of discounts to certain students. Ordained ministers or full-time pastors receive 50% discount on tuition; missionaries of furlough receive tuition-free privileges; dependent children of missionaries in service, 50% discount on tuition; and dependent children of recognized clergymen, 25% discount on tuition when paid by parent.

The College also makes available considerable help through loans. Short-term, low-interest loans are available through the Dull Loan Fund and the Garrison Memorial Loan Funds, and long-term, low-interest loans are available through the National Defense Loan Fund, in which program the college participates.

STUDENT LIFE

The greater Seattle metropolitan area offers college students exceptional cultural programs, recreation, church and Christian service opportunities. On the campus, spiritual life is emphasized not only in the class-rooms but through daily chapel services and in quarterly spiritual emphasis weeks, at which time outstanding Pentecostal speakers of spiritual stature give of their ministries to the student body. Several campus organizations, including the Associated Student Body, The Missionary Society and prayer bands, residence councils, the class organizations, and other groups offer opportunity for Christian fellowship, spiritual growth and student leadership development. Student wives have an organization known as the Co-Weds. All students are a member of the Associated Student Body and are represented through their classes on the Student Council.

Christian service is emphasized at the college, and all students participate in one form or another in the church life of the community. Special Christian service opportunities exist for mission work, hospital and jail services, street services and week-end assignments in churches. Special emphasis upon such experiences is given in the training programs of students preparing themselves for the ministry at the college.

All-school and group social activities include the Harvestime social in the fall, the all-school banquet in the Spring, and the all-school picnic towards the close of the school year. Classes and other student organizations sponsor other social activities among themselves.

Recreational and sports opportunities are afforded through the school-basket ball team and through intra-mural sports activities. The gymnasium, the tennis courts, and playing field facilities all provide an excellent physical medium for on-campus recreation and sports. The college is also located close to winter sports recreational areas.

Other special campus activities include the college and concert choirs and the student publication, the KARISMA, the college yearbook published by the Student Body.