

Archives

BULLETIN of INFORMATION

northwest

college

of the

Assemblies of God



*“And the ticket that I write is the one I must show  
And the road that I can build is the one I must take. . . .”*

from “The Road That I Can Build”  
© 1970, Susan F. Andrews





t  
h  
e  
  
n  
o  
r  
t  
h  
w  
e  
s  
t  
  
p  
e  
r  
s  
p  
e  
c  
t  
i  
v  
e

# College Calendar

## AUTUMN QUARTER

1971-72

Registration .....	Sept. 20-21
Upperclassmen .....	Sept. 20
Freshmen .....	Sept. 21
Orientation for Freshmen .....	Sept. 22
Class instruction begins .....	Sept. 23
Convocation .....	Sept. 27
Last date to register .....	Sept. 28
Spiritual Emphasis Week .....	Oct. 4-8
Thanksgiving Recess .....	Nov. 24
Classes resume .....	Nov. 29
Final Exams .....	Dec. 8-10
Christmas interim .....	Dec. 10-Jan. 2

## WINTER QUARTER

Registration	
Students in residence .....	Nov. 15-24
New Students .....	Jan. 3
Class instruction begins .....	Jan. 4
Last date to register .....	Jan. 10
Spiritual Emphasis Week .....	Jan. 10-14
Washington's Birthday .....	Feb. 21
Final Exams .....	Mar. 13-15
Spring interim .....	Mar. 15-20

## SPRING QUARTER

Registration	
Students in residence .....	Feb. 14-23
New students .....	Mar. 20
Class instruction begins .....	Mar. 21
Campus Day .....	Mar. 31
Spiritual Emphasis Week .....	Apr. 3-7
Last date to register .....	Mar. 27
Baccalaureate .....	May 27
Commencement .....	May 28
Final Exams .....	May 29- May 31



Northwest College is a Christian institution of higher learning offering programs of study on the undergraduate level. The college provides educational opportunities for those who desire a general college education, training for full-time Christian service, or preparation for other professional fields of activity. The college is operated under the control of the Alaska, the Montana, the Northwest, and the Southern Idaho District Councils of the Assemblies of God.

Northwest College is affiliated with the Assemblies of God and adheres to its Statement of Fundamentals of Faith.

## EDUCATIONAL STANDING

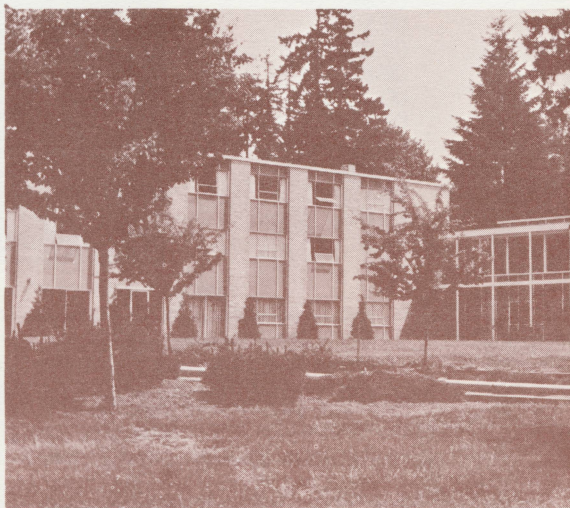
NORTHWEST is an accredited member of the Accrediting Association of Bible Colleges. It is listed in the current bulletin "Accredited Higher Institutions" by the United States Office of Education. The college is recognized by the New York State Board of Regents for transfer of credit to the New York University on a provisional basis. The college meets the criteria for endorsement by the Educational Department of the Assemblies of God, Springfield, Missouri. It has institutional membership in the American Association of Collegiate Registrars and Admissions Officers, and the Pacific Coast Association of Collegiate Registrars and Admissions Officers. It is approved by the State Department of Education for the training of veterans, by the Department of Justice for the training of foreign students, and by the U.S. Department of the State for participation in the Exchange Student Program.

The College is recognized by the Northwest Association of Secondary and Higher Schools as a candidate for accreditation. This association recommends that all colleges receive credits in transfer from Northwest College.

## CAMPUS AND BUILDINGS

The campus is a semi-wooded tract of 35-acres overlooking Lake Washington and metropolitan Seattle with a view of the Olympic mountains on the western skyline.

Fourteen new buildings of modern design have been constructed on the campus. They are: Administration buildings; Bronson Hall, housing faculty offices and some administrative offices including the Registrar's office; Education Building, housing four lecture rooms; Chapel Building, housing chapel, college library, and some lecture hall space; Learning Center, housing three lecture rooms and a multi-purpose lecture auditorium, and office space; the Student Union Building, housing a student lounge, the Snack Shack, ASB offices, bookstore, the Dormalee Bunn Memorial Prayer Chapel, and the music hall; the Science Building, housing chemistry and biology labs and lecture rooms; the Cafeteria; the Northwest Pavilion (gymnasium); the Residence of the President; the Mollie J. Perks Residence Hall, housing 188 women students; and the Gray-Beatty Residence Hall, housing 200 men.



## REQUIREMENTS FOR ADMISSION

The Northwest College reserves the right to change the rules regulating admission to, instruction in, and graduation from the college, and to change any other regulations affecting the student body which shall apply not only to prospective students, but also to those presently matriculated in the school.

# a d m i s s i o n s

Admission to the College is granted to applicants meeting the College admissions requirements without regard to race, color, or national origin. However, admissions are made on a selective basis according to the criteria as follows:

All applicants must give evidence of sound moral character and are expected to have a vital experience of salvation through faith in Jesus Christ. Applicants are admitted only upon satisfactory recommendations from sources as specified on the College admissions application form.

Applicants must be graduates of an accredited high school with sixteen Carnegie units. The following distribution of preparatory work is recommended: English, 3 units; History, 1 unit; Mathematics, 2 units; Science, 1 unit, and Foreign language, 1 unit. Applicants may be admitted on the basis of satisfactory scores on the General Educational Development Tests as established by State Competency standards.

Regular standing is granted approved applicants who have achieved a C average in college preparatory courses and attain a class rank in the upper three-fourths of their graduating classes or who achieve satisfactorily in a college ability test.



Provisional standing is granted to a limited number of selectively-admitted students who do not qualify for regular standing but who, in the judgement of the Admissions Committee, show promise of benefit from the opportunity to pursue college work at Northwest College.

A limited number of mature persons who are not graduates of a high school may be admitted on a selective basis as special students. Degrees or certificates of graduation may be granted to high school graduates only.

All approved applicants will be sent a health form for completion by a physician. The report is to be returned to the College before school starts or otherwise completed by the College physician within one week after the quarter of matriculation.

## APPLICATION PROCEDURE

Application for admission is made on the form provided by the College. Forms may be secured by addressing the Registrar at the College. Applications should be received one month prior to the term for which the applicant desires to enroll. However, applications will still be received after these dates and will be processed on a space-available basis. No assurance of acceptance should be assumed until the applicant receives a letter of approval from the Admissions Office. The application fee (\$10) together with a photo or snapshot must accompany the application before it will be considered. The College Registrar will write to the applicant's references for recommendations.

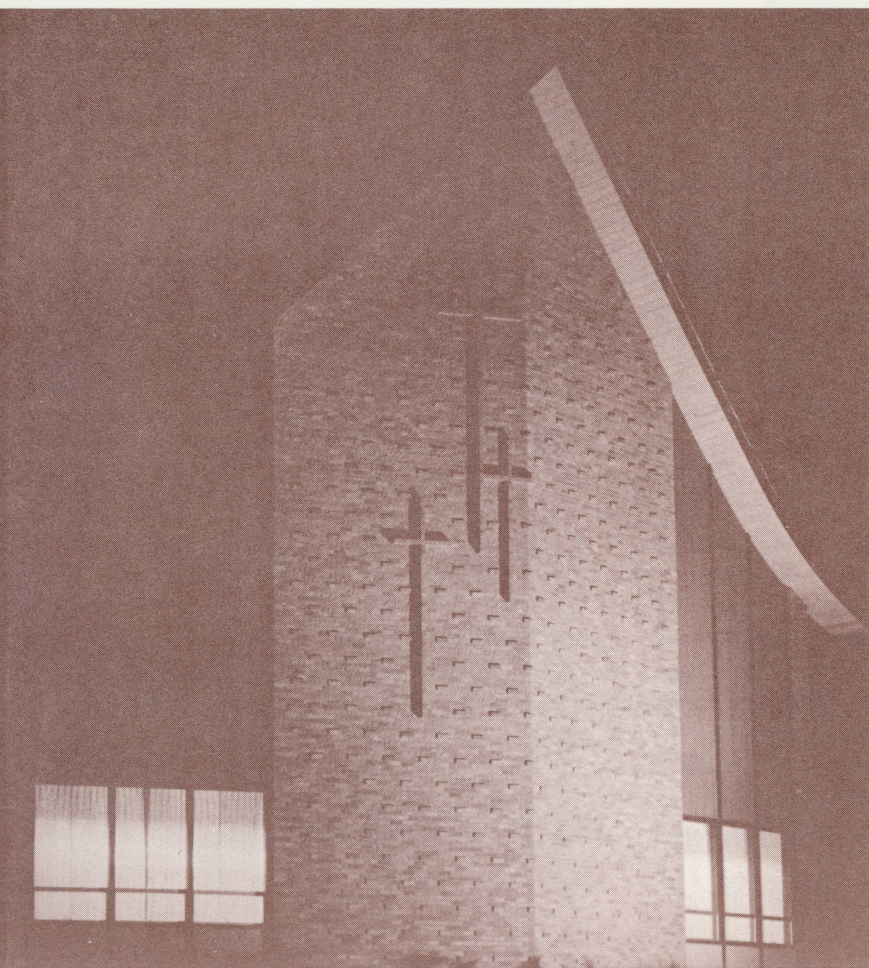
It is the responsibility of the applicant to see that his high school transcript and a transcript for any college work attempted are sent to the Admissions Office at the College. This may be done by filing a letter of request with the schools concerned. After the recommendations and transcripts have been received, the Admissions Committee will evaluate the application. Applicants will be notified by mail whether or not they are accepted. The application fee is non-refundable.

An enrollment confirmation deposit of \$25 must be submitted to the College upon notice of acceptance in order to hold an enrollment reservation. Dormitory students must additionally submit a deposit of \$25 to hold a room reservation. Deposits for the fall quarter must be submitted by August 1, or within ten days after date of acceptance if after August 1. Deposits are refundable upon written notice of cancellation by September 1. Thereafter they are refunded only if the applicant is unable to enroll for reasons of illness or emergency.

## ADMISSION TO ADVANCED STANDING

Students desiring to transfer to the College from another institution of recognized collegiate rank must follow the general instructions for admission and must see that transcripts of previous college work are sent to the College Admissions office. Course work in parallel courses or areas of instruction will be considered for transfer provided that they show a C average and that the transcript shows that the student is entitled to honorable dismissal.

Candidates for graduation must complete three quarters in Northwest College irrespective of the number of transfer credits. Normally work considered terminal or occupational or deficiency course work is not recognized for transfer. Work from unaccredited institutions will be considered on an individual basis, and when accepted, must be validated by a minimum of three quarters' satisfactory work completed in the Northwest College and/or by examination.





## DEGREES AND REQUIREMENTS

Northwest College offers the Associate in Arts Degree after successful completion of the two-year curriculum and the Bachelor of Arts or the Bachelor of Science Degrees after successful completion of a four-year curriculum. It offers the Bachelor of Theology degree upon successful completion of the five-year curriculum.

Candidates for a degree must satisfactorily complete 93 credits for the A.A. degree, 183 credits for the B.A. or B.S. degree, and 228 credits for the Th. B. degree, including General Studies requirements and the requirements of a specific program as outlined in the catalog. They must achieve a 2.0 (C) average. They must complete a minimum of one year of work within one division in Northwest College, including their final quarter of required work prior to graduation. Candidates for graduation must make formal application for their degrees during the first quarter of their year of graduation.



# CURRICULUM ORGANIZATION

## I. DIVISION OF GENERAL STUDIES

### HUMANITIES

English, Literature, and Speech  
Modern Languages  
Music  
Speech and Communications

### SOCIAL STUDIES

Business Education  
Education and Psychology  
History and Political Science  
Health and Physical Education  
Sociology

### NATURAL SCIENCE and MATHEMATICS

Biological Sciences  
Physical Sciences  
Mathematics

## II. DIVISION OF RELIGION AND PHILOSOPHY

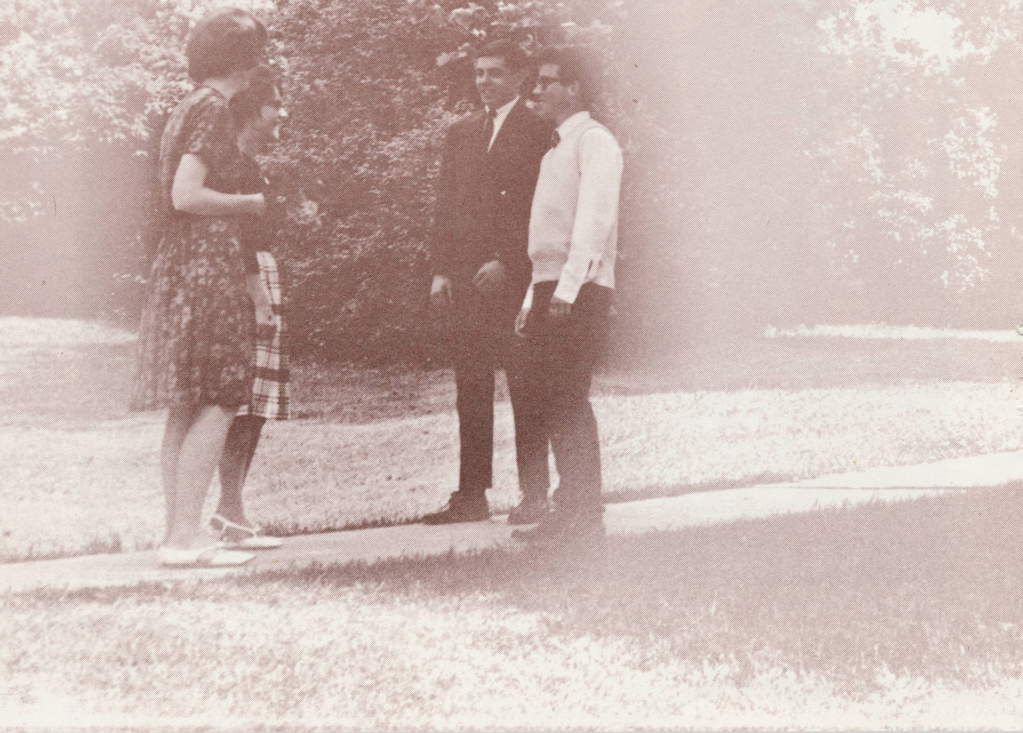
### RELIGION

Biblical Literature  
Biblical Languages  
Christian Education  
History of Christian Life and Thought  
Missions and International Studies  
Practical Theology  
Theology  
Speech and Preaching

### PHILOSOPHY

General Philosophy  
Christian Philosophy

C  
U  
R  
R  
I  
C  
U  
L  
U  
M  
S  
&  
M  
A  
J  
O  
R  
S



## I. THE DIVISION OF GENERAL STUDIES

Subject matter in the Division of General Studies is grouped in three broad study areas, (1) Humanities (2) Social Studies and (3) Natural Science and Mathematics, and is presented in this order. An overview of the purpose of each area of subject matter is outlined in the following paragraphs.

### RECOMMENDED CURRICULUM OF GENERAL STUDIES WITH HUMANITIES EMPHASIS

This selection of subject-matter is designed for those planning college majors in English, Speech, Modern Languages, Philosophy, or in some field of fine arts.

First Year	Second Year
English 101, 102 . . . . . 6	English 203 . . . . . 3
Literature . . . . . 5	Speech 121 . . . . . 3
Music 101 . . . . . 3	Foreign Language . . . . . 15
Bib 105, 110, Th 121 . . . . . 9	Science/Mathematics . . . . . 15
History/Pol. Sci. . . . . 5	Theo. 223, Miss 141 . . . . . 6
Psychology 191 . . . . . 5	Philosophy 285 . . . . . 5
Sociology 111 . . . . . 5	
Physical Education and Hygiene . . 5	

### RECOMMENDED CURRICULUM OF GENERAL STUDIES WITH BUSINESS EDUCATION EMPHASIS

This selection of courses would be useful for those planning a career in office work or who might desire foundational studies for professional training in business. The emphasis in the courses offered is toward secretarial services and office practice.

First Year	Second Year
English 101, 102 . . . . . 6	English 203 . . . . . 3
Business Education . . . . . 12	Business Education . . . . . 12
Sociology 197 . . . . . 5	Science/Mathematics . . . . . 15
Psychology 191 . . . . . 5	Literature . . . . . 5
Religion: Bib 105,110, Th.121 . . 9	Speech 121 . . . . . 3
History/Political Science . . . . . 5	Music 101 . . . . . 3
Physical Education and Hygiene . 5	Religion: Missions 141 . . . . . 3
	History/Political Science . . . . . 5

## RECOMMENDED CURRICULUM OF GENERAL STUDIES WITH EMPHASIS IN PRE-EDUCATION

This selection of courses would be useful for those planning to pursue a program in preparation for teaching.

First Year	Second Year
English 101, 102 . . . . . 6	English 203 . . . . . 3
Psychology 191 . . . . . 5	Speech 121 . . . . . 3
Sociology 197 . . . . . 5	Psychology 292 . . . . . 5
Education 101 . . . . . 5	Education 203 . . . . . 3
Religion: Bib 105,110,Th 121 . . . 9	Science, Mathematics . . . . . 15
Music 101 . . . . . 3	Literature . . . . . 5
History/Political Science . . . . . 5	Religion: Missions 141,Th 223 . . 6
Physical Education and Hygiene . . 5	Electives . . . . . 5
Electives	

## RECOMMENDED CURRICULUM OF GENERAL STUDIES WITH MUSIC EDUCATION EMPHASIS

This selection of subject-matter is recommended for those planning to major in music for performing arts or for music education.

First Year	Second Year
Music 100, 111, 112 . . . . . 11	Music 101,211,212,213,230 . . . 17
Applied Music . . . . . 3	Ensemble Music . . . . . 3
Ensemble Music . . . . . 3	Applied Music . . . . . 3
English 101, 102 . . . . . 6	English 203 . . . . . 3
Psychology 191 . . . . . 5	Literature . . . . . 5
Sociology 197 . . . . . 5	Religion: Miss 141 . . . . . 3
Bible 105,110, Theo 121 . . . . . 9	History/Pol. Sci. . . . . 5
Physical Education and Hygiene . 5	Science & Math . . . . . 15
Speech 121 . . . . . 3	

## RECOMMENDED CURRICULUM OF GENERAL STUDIES WITH EMPHASIS IN COMMUNICATIONS AND SPEECH

First Year	Second Year
Communications . . . . . 9	Communications -(selected from 15*
incl. Spch. 121, 222	Spch/Journalism)
English 101, 102 . . . . . 6	English 203 . . . . . 3
Music 100/101 . . . . . 3	Science/Math . . . . . 15
Bib 105, 110, Th 121 . . . . . 9	Literature . . . . . 5
History/Pol.Sci. . . . . 5	Miss 141 . . . . . 3
Psychology 191 . . . . . 5	Electives . . . . . 5
Sociology 111 . . . . . 5	
P.E./Hyg . . . . . 5	
Total . . . . . 47	Total . . . . . 46

\*If a Foreign Language is required in the program the student will pursue after the second year, it may be taken as part of the second year in NC, in which case the student should include language in the hours assigned to Communications and electives.



**NATURAL SCIENCES AND MATHEMATICS GROUP:**

Biological Sciences, Physical Sciences, Mathematics.

**RECOMMENDED CURRICULUM OF GENERAL STUDIES WITH EMPHASIS IN SCIENCE AND MATHEMATICS**

This selection of subject-matter would be useful for those seeking a General Science foundation for science and math majors.

First Year	Second Year
English 101, 102 ..... 6	Science* ..... 15
Math. 101, 102, 103, 124, 125, 126.. 15	English 203 ..... 3
Bib 105, 110, Theo. 121 ..... 9	Literature..... 5
Psych. 191 ..... 5	Speech 121..... 3
Sociol. 197 ..... 5	History/Pol. Sci..... 5
Physical Ed. and Hyg. .... 5	Theo. 223, Miss. 141 ..... 6
	Music 101 ..... 3
	Electives ..... 5

\*Those interested in biological science should select from 110, 111, 112, 116; those interested in physical science should select from 120, 121, 122, 123, 124, 220.

**RECOMMENDED ONE-YEAR CURRICULUM WITH PRE-NURSING EMPHASIS**

This selection of subject-matter is designed for those planning to enter a nursing program leading to the R.N. It provides basic general studies and chemistry together with some foundational courses in religion for personal biblical knowledge and spiritual culture.

Course	Hrs.
English 101, 102, 203.....	9
Chemistry 120, 121 or 122, 123 .....	10
Religion: Bible 105, 110, Theo. 121.....	9
General Psychology 191.....	5
Sociology 197 .....	5
Physical Education and Hygiene .....	5

## II. THE DIVISION OF RELIGION AND PHILOSOPHY

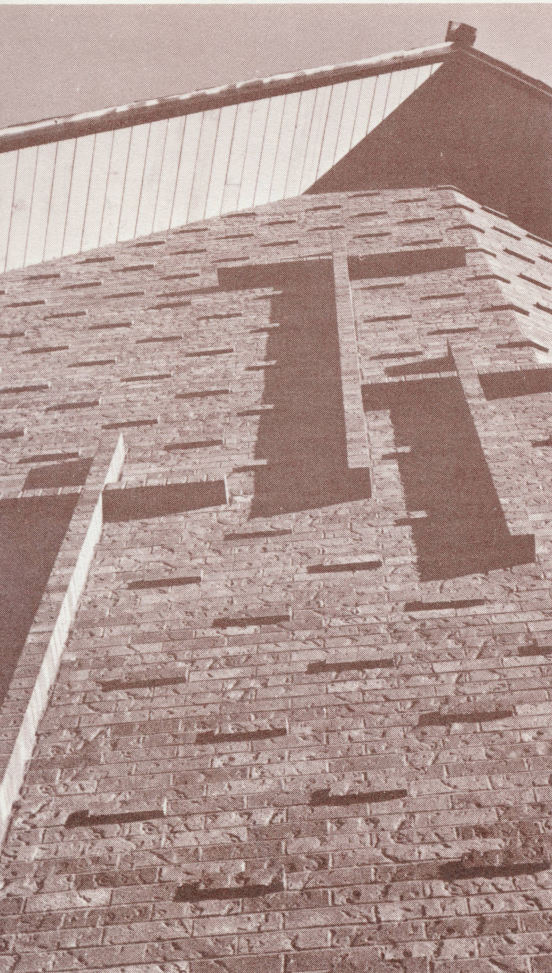
Majors: Biblical Literature, Christian Education, Missions and International Studies, Religion and Philosophy (divisional major).

Minors: New Testament Greek, Christian Education, Missions and International Studies, Sacred Music, Philosophy and Apologetics, Business Education (for church staff workers), Pastoral Studies.

**DIVISIONAL OBJECTIVES.** The Division of Religion and Philosophy seeks to provide in-depth training in Biblical and professional studies in preparation for the Christian ministry. Specifically comprehended within the scope of the division's aims is the preparation of pastors, evangelists, Christian education and youth ministers, ministers of sacred music, missionaries and church staff workers.

To provide a broad general education upon which to base the specialization, the student will pursue the General Studies requirements as outlined in this catalog and then select a major and a minor within the division corresponding to his special fields of interest. Each major within the division combines a concentration of studies in Biblical literature and theology together with professional studies, and by selecting a major and minor emphasis, it is intended to provide the student with skills-facility in more than one channel of communication and hence to enhance his usefulness as a minister. Certain of the four-year curriculums can be pursued towards graduation with either the Bachelor of Arts Degree or the Bachelor of Science Degree.

Those planning to go on to a graduate school of religion or to a seminary to prepare for the chaplaincy or for some other specialized purpose are encouraged to pursue the divisional major in Religion and Philosophy.



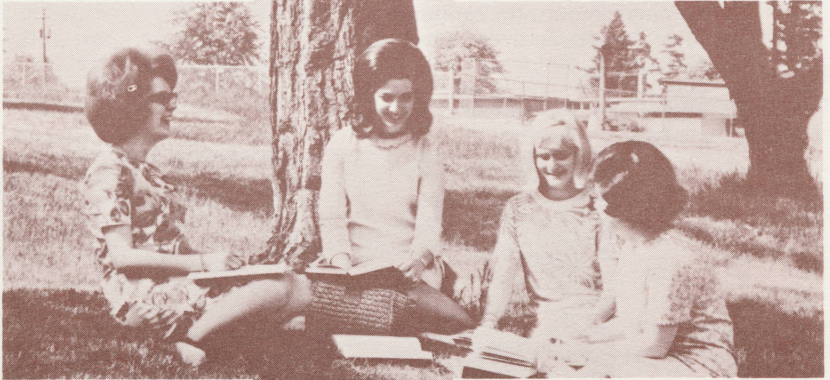
**RECOMMENDED STANDARD CURRICULUM FOR ALL  
MAJORS IN THE DIVISION OF RELIGION AND PHILOSOPHY**

**First Year**

Religion .....	12
Bible 105, 110	
Theology 121	
Missions 141	
English 101, 102 .....	6
History/Political Science. ....	10
Music 100 .....	3
Psychology 191 .....	5
Sociology 197 .....	5
Physical Education & Hygiene	5

**Second Year**

Religion .....	6-18*
Bible 211	
Theology 223	
Bible electives	
Speech 121, 122 .....	6
Foreign Language.....	15**
Literature .....	5
English 203 .....	3
Science/Mathematics .....	15



**Third Year**

Religion & Philosophy .....	20
Biblical Literature	
and Theology .....	15
Philosophy 285 .....	5
Major area studies .....	18
Minor area studies .....	9

**Fourth Year**

Religion & Philosophy .....	20
Biblical Literature and	
Theology, incl. Bible 420 ..	15
Church History 380 .....	5
Major area studies.....	18
Minor area studies.....	9

\*Students taking non-language programs may take Biblical Literature electives instead. Consult requirements of major.

\*\*Foreign language required of all students working towards the B.A. degree. Consult requirements of major.

## GENERAL CHARGES:

Application fee 1 . . . . .	\$10.00
Re-enrollment fee 2 . . . . .	5.00
Registration . . . . .	10.00
General fee, full-time students 3 . . . . .	30.00
General fee, part-time students, per credit hour 3 . . . . .	2.50
Late Registration fee . . . . .	10.00
Late test fee, Orientation examinations . . . . .	5.00
Change of course fee, per charge . . . . .	1.00
Student fee, per year 4 . . . . .	27.50
Health Insurance, per quarter (required of full-time students) . . . . .	7.50
Graduation fee . . . . .	25.00
Transcript fee (applies after first transcript) . . . . .	1.00
Evangelical Teacher-training Diploma . . . . .	5.00
Vehicle Parking, per quarter . . . . .	2.50
Motorized bicycles . . . . .	1.00

- 1 Non-refundable. Does not apply to other charges.
- 2 Applies to previously enrolled students who have been out of enrollment for more than one calendar year and who must submit up-dated application.
- 3 Covers library, student personnel services, including postal service, communications, on-campus first-aid and health services, and nominal amount for capitalization of college.
- 4 The Student Activity fee is charged once per year upon initial enrollment, and covers cost of yearbook, class dues, recreational activities, on-campus athletic admissions, all-school banquet ticket and other all-school socials.

# Financial



## INSTRUCTIONAL CHARGES:

Tuition, 12-17 credits per quarter . . . . .	\$270.00
Tuition, 11 credits or less, per credit . . . . .	22.50
Tuition, over 17 credits, per credit . . . . .	16.00
Auditing, per quarter hour . . . . .	11.25
Special course and lab fees . . . . .	
Business Machines . . . . .	7.50



Typewriting Classes, per quarter . . . . .	3.50
Office Practice . . . . .	5.00
Science Lab Fee . . . . .	5.00
Towel charge, P.E. Classes, per quarter . . . . .	2.25
Private Music Lessons (ten 30-minute lessons) per quarter . . . . .	30.00
Practice Room, per quarter	
Piano . . . . .	5.00
Organ . . . . .	7.50
Voice . . . . .	5.00

**DEPOSITS:**

Confirmation (see application procedure) . . . . .	\$25.00
Dormitory . . . . .	25.00
Room key deposit, dormitory students . . . . .	5.00
Science Lab breakage deposit, per quarter . . . . .	5.00

**BOARD & ROOM CHARGES:**

	Fall	Winter-Spring
Board, per quarter . . . . .	\$175.00	\$160.00
Room, per quarter (Perks & Beatty Halls) . . . . .	110.00	100.00
Room, per quarter (Gray Hall) . . . . .	125.00	115.00

Single occupancy an additional \$30.00 per quarter if space desired and available.

The College reserves the right to change tuition and fees during the period that this catalog is in force if it should become necessary.



**ESTIMATED COST PER QUARTER**

The estimated cost of tuition, fees; board and room, and books for one quarter is around \$625. This amount will vary according to academic loads carried, types of subject-matter (some requiring lab. fees, etc.) and whether or not a student takes special instruction in applied music. The cost of books will vary according to subject-matter, but students should plan on an average of \$25-40 per quarter. The estimated cost for students commuting from their homes will be around \$320 per quarter.

**VETERANS AND SOCIAL SECURITY BENEFITS**

The College is approved for students training under the provisions of educational benefits of the Veterans Administration and the Social Security Administration. Make application for benefits to local offices of these agencies. The College will make the proper certifications to activate benefits.

## FINANCIAL AID

The following forms of student aid are offered at Northwest College to assist in educational costs. Detailed information may be secured from the Admissions Office or from the Financial Aids Officer.

### Scholarships

**Freshman Scholarships:** to high school students graduating in the upper 12% of their class who matriculate at Northwest College. Graduated amounts of award.

**Youth Talent Scholarships:** to district, regional and national winners of the C.A. department competition (quiz, musical, Mr. or Miss C.A.).

**Missionary Internship Scholarships:** to students of the college approved for summer missionary internship.

**Alumni Scholarship Fund:** special awards made by selection of the Alumni Executive Committee.

**One-year Service Scholarships:** for service groups - usually in summer student recruitment travel.

**Gospel Publishing House Journalism Scholarship:** to junior, senior students interested in journalism.

### Loans

**The National Defense Loan:** long-range Government loans administered by the College.

**The Federally Insured Loan:** arrange through the Commercial Banks.

**General Council Ministerial Loan:** to upper division ministerial students.

Short Term Loans with low interest rate are available.

### Grants In Aid

Tuition Grants in Aid are offered as follows:

Ordained Ministers or full-time pastors .....	50%
Missionaries on furlough .....	50%
Dependent, unmarried children of:	
Missionaries .....	50%
Home Missionaries .....	25%
Full-time Ministers .....	10%
Wives of students (if husband is full-time student) .....	50%

### Employment Assistance

The college offers an employment service through the Office of the Dean of Women for off-campus employment. Applications for on-campus employment are handled by the Office of the Business Manager. The metropolitan area offers appreciable employment opportunities for part-time employment while attending the College.



As an academic institution, Northwest College has among its distinctive purposes for existence the stimulation and guidance of young people to a broadened spiritual and social awareness. The College considers that concern for and involvement in the spiritual and social welfare of its students are integral parts of its reason for being. In keeping with this concern, the College has sought to evaluate certain matters of conduct and has developed a code of student citizenship. It has concluded that such things as the use of alcoholic beverages, tobacco, the misuse of narcotics, the attendance at public theatres, dancing, or the reading of prurient or pornographic literature do not serve the best spiritual and social interest of the students. Such behavior disturbs and often destroys the spiritual and social educative processes the College seeks to conduct.

It is assumed that when a student applies for admission to Northwest College, he affirms that he is in agreement with the citizenship standard of the College and will conduct himself in a manner that is in keeping with that standard. It is further assumed that the College has the right to terminate the enrollment of any student who by his action disrupts any means the College attempts to attain its objectives.

## *student life*

### General Information

**Housing:** The College provides housing on campus for single non-commuting students. The housing office gives assistance to married students in finding reasonably priced off-campus living quarters.

**Health Services:** A registered nurse is on duty in the College Infirmary on a scheduled basis. All students are provided with a health insurance policy at the time of registration.

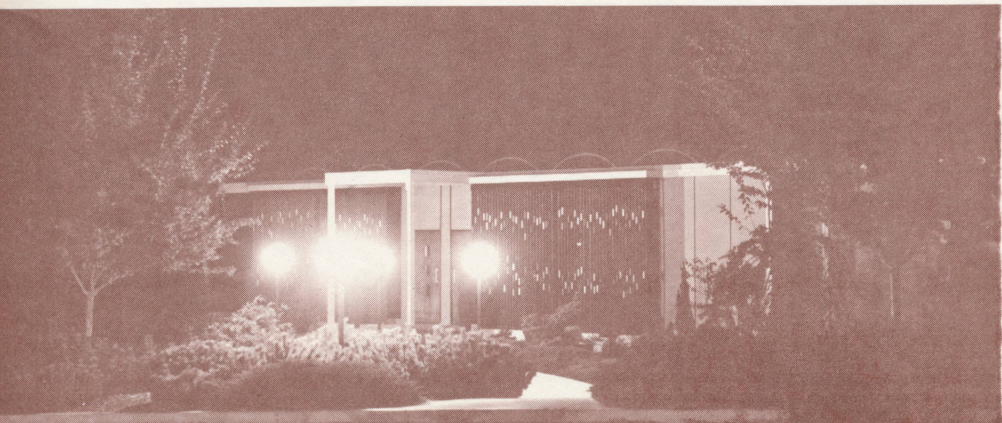
**Automobiles:** Automobiles that have been registered in the office of the Dean of Students may be brought on campus.

**Student Activities:** The Associated Student Body in cooperation with the College Administration sponsors a spiritual, cultural and social life program that has as its objectives the development of the whole person.

The World Outreach Ministries program provides the student with an opportunity for training and outreach in gospel teams, children and youth ministries, evangelism, world missions, hospital visitation and servicemen's work. Daily chapels and a spiritual emphasis week each quarter give opportunity for spiritual growth and worship.

A variety of cultural events are held throughout the year in order to expand the cultural awareness of the student.

The Associated Student Body and other organizations plan and promote a number of social events. These include the Harvestime Social in the fall and the All-School Banquet in the spring. Organizations such as the Associated Women Students, the Associated Men Students, the Radio Club, the Married Student Association, and class organizations are sponsored by the ASB and provide numerous opportunities for leadership experience and training.



*at northwest*

**For Registration Forms  
and Additional Information**

**write: NORTHWEST COLLEGE  
OFFICE OF ADMISSIONS  
P.O. BOX 579  
KIRKLAND, WASHINGTON 98033  
Phone (206) 822-8266**

---

