

Printed for Gen.  
Council in Mpls.  
Sept. 1941

# Northwest Bible Institute

*E. 69th and 8th Avenue N. E.  
Seattle, Washington*



*Affiliated With and Endorsed By The  
General Council of The Assemblies of God*

REV. HENRY H. NESS, Principal

REV. C. C. BEATTY, Dean

# *Institute Calendar*

## *October 1st to May 15th*

Classes are conducted daily except Saturday and Sunday  
From 8:00 A. M. to 12:30 Noon

FOR FULL PARTICULARS WRITE FOR COMPLETE CATALOG

—Address—

**NORTHWEST BIBLE INSTITUTE**

East 69th Street and 8th Ave. N. E.

Seattle, Washington

### THROUGH THE OFFICE WINDOWS

#### **DEAN'S OFFICE**

Instruction patiently imparted

#### **PRINCIPAL'S OFFICE**

Counsel wisely administered

#### **MATRON'S OFFICE**

Information willingly supplied

#### **SCHOOL OFFICE**

Business carefully transacted



## *General Information*

### **SCHOOL FEES**

Cost of the regular course per year, including notes, books, registration, tuition, library fee, and personal service is \$65.00. (This does not include board, room and laundry.) Of this amount, \$35.00 must be paid when the student enters school.

Tuition rates for special students is \$10.00 per month, which must be paid in advance, or \$75.00 for the entire year.

### **REQUIREMENTS FOR ADMITTANCE**

Requirements for admittance to the NORTHWEST BIBLE INSTITUTE are as follows: a vital experience of Salvation—"Ye must be born again"; sound bodily health; age 18 years or older; assurance of compliance in full with all the rules and customs of the Institution; every question of the application blank **MUST** be answered.

Applicant **MUST WAIT FOR NOTICE** that references have replied and that application has been approved by the faculty.

### **EXAMINATIONS, REPORT CARDS, CERTIFICATES, DIPLOMAS**

Examinations are given from time to time during the school year and are compulsory for all students.

A careful record is kept of the subjects and scholastic marks of each student. Report cards are issued to students at the end of each term.

Certificates of promotion are given at the close of each year to students who have completed the year's work.

Diplomas are awarded to those who satisfactorily finish the three-year course. A charge of one dollar is made for the diploma.

### **HOUSING ACCOMMODATIONS**

The Institute owns three large houses which have been converted into men's and women's dormitories. These are conducted on a co-operative basis.

Students living in the dormitories are organized into committees, with a chairman and a treasurer appointed by the principal, to insure proper management and conduct. Each student living in the dormitory is required to contribute two hours each day as his share towards maintenance. This arrangement provides splendid practical experience for the students.

Board and room are provided in the dormitories for \$15.00 per month. This amount must be paid each month in advance.

Students expecting to live in the dormitories should bring bedding—quilts, blankets, sheets—for single beds; pillows, pillowcases and all personal articles such as towels, wash cloths, etc., must also be supplied by the student.

### **EMPLOYMENT**

The Institute assists in finding part-time employment in private homes for the young women students desiring such work, where they are given board and room, and in most instances some compensation. In this way, many are able to work their way through school.

Because the NORTHWEST BIBLE INSTITUTE is an institution of learning duly recognized by the Department of Labor at Washington, D.C., Canadian students may obtain a "Visa" which will permit them to take employment.

The Matron of the Institute renders every reasonable service in assisting the young women in securing employment.

Some of the men students also have been able to obtain part-time work.





*Northwest Bible Institute Student Body and Faculty . . 1940, 1941*



## *Courses of Study*

The courses of study offered by the NORTHWEST BIBLE INSTITUTE conform to the courses of study offered by the other Bible Schools of the Assemblies of God.

### DOCTRINE

A careful and inspiring study of the fundamental doctrine of the Bible.

### COVENANTS

A study of the contrast between the Old and New Covenants.

### CHURCH GOVERNMENT

A study of Church Governmental Set-up in the light of the Scriptures.

### SPECIAL LECTURES

Studies on practical work, the opening of pioneer fields, the establishing of churches, etc.

### OLD TESTAMENT SYNTHESIS

A study of the beginning of human history and of the Old Testament characters, showing God's dealings with His chosen people, typical and illustrative of His dealings with the Church; also a study of the historical settings of the prophetic books.

### EPISTLES

A detailed study of the letters written by Paul and others to the early church.

### CHURCH HISTORY

The study of the history of the Christian Church since the days of the apostles, revealing how error came in and giving account of the Church's heroes and martyrs, the dark ages and the reformation.

### NEW TESTAMENT SYNTHESIS

A study of the life of Christ; the contrast between the Old and the New Covenants and the Gospels.

### PROPHECY

A study of the prophecies concerning Israel and the surrounding nations; prophecies already fulfilled concerning Christ and those which are soon to come to pass; a detailed study of Daniel and Revelation.

### CHRISTIAN EVIDENCES

A study of the evidences of the Divine authorship of the Bible and the Deity of Jesus Christ. Provides an abundance of clear proof why Christianity is more than a religion, and is, in truth, the only way of salvation.

### PUBLIC SPEAKING

The purpose of this course is to train the student in the art of effective speaking from the standpoint of voice, bodily action and organized thought. Practice in the presentation of original speeches are required.

### PARLIAMENTARY LAW

A study designed to acquaint the student with parliamentary procedure necessary to conduct business meetings in the church.

### DISPENSATIONAL STUDIES

A study of the "Plan of the Ages," showing how God has dealt with mankind in the various periods of Biblical history.

### PERSONAL EVANGELISM

A study which deals with the methods to be followed and mistakes to be avoided in winning souls for Christ.

### PASTORAL THEOLOGY

A study of the duties, activities and problems of the pastor, ministerial courtesy and etiquette.

## HOMILETICS

Studies in the preparation and delivery of sermons; outlines of sermons are presented for discussion and criticism.

## POLEMICS

A study preparing the personal worker to deal intelligently with those who have become ensnared with false religious systems and to prepare the pastor to protect the flock therefrom.

## TYPOLOGY

The foreshadowing of Christ and the Church in types, forms and ceremonies as given in the Old Testament.

## ACTS

The history of the early Christian Church as to its origin and its activity in the spreading of the Gospel.

## ATLAS

A study of the geography of Bible lands.

## SUNDAY SCHOOL ORGANIZATION AND METHODS

A study covering the organization of Sunday Schools.

## HISTORY OF MISSIONS

A study principally for students preparing to be foreign missionaries. Special missionary lectures are delivered by visiting missionaries from various countries.

## MUSIC I

Music fundamentals: starting from the beginning with the names of the lines and spaces; scales, counting, syllables and the application to hymns and church music; elementary conducting.

## MUSIC II

Continuation of Music I with the addition of sight reading and ear-training and intermediate conducting of songs.

## MUSIC III

Continuation of Music II, developing choral music to four-part singing. Advanced conducting.

## ORCHESTRA

One period a week is devoted to regular rehearsal, and all students who play orchestral instruments are eligible for this instruction. The orchestra plays daily for all morning devotion services.

## CHOIR

Composed of 40 to 50 men and women who have passed a voice examination. The choir has had unusual opportunities for advancement in that it has been featured each Friday evening over KJR, the largest radio station in the Northwest and also in city-wide evangelistic services in the Civic Auditorium, Moore Theatre, Metropolitan Theatre and at Easter sunrise services.

## PRIVATE INSTRUCTION

Lessons are given in voice, piano, violin and other orchestral instruments including accordian and guitar. For those who wish to study music in advanced subjects, there are classes in Harmony, Orchestration and Conducting.

## ENGLISH

The Bible cannot be properly studied nor correctly interpreted and expounded without a thorough understanding of English. For the prospective missionary this course is essential as a foundation for the study of foreign languages.

## HYGIENICS

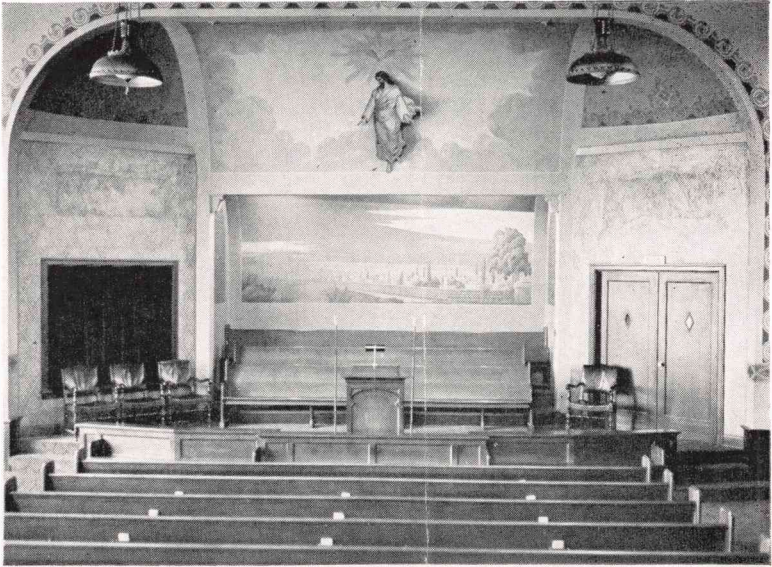
The study of first aid, personal hygiene and practical nursing.



## SPIRITUAL LIFE

A high tide of spirituality is maintained throughout the Institute, and the life of the school has been marked by many outpourings of the Spirit of God. The first period of each morning is devoted to prayer, and at noon a chapel service is conducted by the students. A part of each Friday afternoon is devoted to prayer for the mission fields by the various Missionary Bands. Correspondence is carried on with the missionaries on the field and special requests are thus brought before the prayer bands.

All classes in the school are opened with prayer, and in many instances the power of God is so manifest that it is impossible to conduct classes, and the entire period is devoted to praise and worship. Glorious spiritual victories are won during these seasons of devotion.



CHAPEL

### NORTHWEST DISTRICT COUNCIL EXECUTIVE BIBLE SCHOOL COMMITTEE

REV. FRANK GRAY, Chairman  
REV. R. J. CARLSON  
REV. D. H. McLAUGHLIN

REV. HENRY H. NESS  
REV. J. E. RASMUSSEN  
REV. C. T. WALBERG

### BOARD OF DIRECTORS

REV. FRANK GRAY, Chairman  
REV. J. A. BOGUE  
REV. A. R. MATTSON  
REV. R. F. ASHWORTH  
REV. C. E. BUTTERFIELD  
REV. R. J. CARLSON  
REV. G. L. COLEMAN

REV. A. B. CRABB  
REV. L. C. HODGES  
REV. K. LEONARD  
REV. D. H. McLAUGHLIN  
REV. W. F. MORTON  
REV. H. H. NESS  
REV. J. E. RASMUSSEN

REV. C. T. WALBERG

### HONORARY MEMBER

Rev. C. G. Weston, Superintendent Oregon District Council

### GENERAL COUNCIL EXECUTIVE BIBLE SCHOOL COMMITTEE

REV. W. I. EVANS, Dean, Central Bible Institute, Springfield, Missouri, Chairman  
REV. HENRY H. NESS, Principal, Northwest Bible Institute, Seattle, Washington  
REV. J. B. McCAFFERTY, Principal, Shield of Faith Bible Institute, Fort Worth, Texas  
REV. P. C. NELSON, Principal, Southwestern Bible School, Enid, Oklahoma  
REV. HAROLD C. NEEDHAM, Principal, Southern California Bible Institute, Pasadena, California