

For Northwest University,

Take

*Carry
the
Call*

Exit 17

Every Monday night, hundreds of Northwest students gather in the Chapel for Pursuit – a time of prayer and worship. This is just one of the ways we “do” chapel at Northwest.

TO LEARN MORE,
PLEASE SEE INSIDE.

Pursuit





If it's 9:30 p.m. on Mond

Jana Detrick leads worship with fellow student Jonette Hagebusch.



At Northwest University, we are committed to the spiritual development of each of our students. In chapel, influential speakers such as **George Wood** |1|, General Secretary of the Assemblies of God, and youth evangelist **Monty Hipp** |2| challenge our students to pursue their full potential as Christian leaders.

Chapels on the first Wednesday of each month are dedicated to **small groups**. It is my vision to see every student deeply involved in one of these groups, as they help students connect with others for fellowship and accountability. Chelsea Geier and Ashley Cronquist |3| planned

a trip to Starbucks with their group.

Student ministries provide opportunities for students to reach out to our community with the gospel. For example, students visit local schools to pray with high school students who gather annually for "**See You at the Pole**." Pictured |4| are the Northwest students who visited Lake Washington High School this year.

Ambassadors to Kirkland ("A2K") is a student ministry that reaches out through prayer and service to the people of Kirkland, Northwest's hometown. During a recent A2K outreach, Krista Fosse |5| and several other students passed out water

bottles to drivers waiting for a traffic light near campus.

We dedicated a recent chapel hour to **community service**. Activities included litter collection at local parks, grounds maintenance at an elementary school, and facilities cleanup at a crisis pregnancy center. Students Katie Jones, Adrienne Williams and Katie Prickett |6| were among many who helped collect litter at a park near campus.

– **Phil Rasmussen**

Associate Vice President for Campus Ministries and Dean of the Chapel

“PURSUIT” IS FOR STUDENTS AND LED BY STUDENTS AT NORTHWEST. IT’S A TIME OF PRAYER, WORSHIP, SHARING, REACHING OUT TO GOD, AND GETTING CLOSER TO ONE ANOTHER. HERE ARE TWO PERSPECTIVES FROM STUDENTS, ONE WHO LEADS, AND ONE WHO ATTENDS.

...y and there are hundreds of students in the chapel, it must

Jana Detrick, a senior General Ministries and Biblical Studies major at Northwest University, often leads worship at Monday night Pursuit and in chapel services, and when she does, she finds that she is encouraged and strengthened while she ministers to her fellow students.

“I appreciate the atmosphere and being able to come and lay down my burdens from the week and get refreshed by focusing on the Lord and what He is doing and who He is,” she says.

While leading on stage, Jana enjoys her unique perspective on the service: “It is cool to see peoples’ faces. This is something that most people

don’t get to see,” she says, and she is excited about what she sees.

Jana says that she loves the unity that results when students, faculty and staff gather in the chapel to worship together. “We come from many unique circumstances and unite under the banner of worship,” she states.

Jana takes her role as a worship leader seriously. “I think that it is my function to be a vessel and an instrument that points to the Lord.”

I have learned the importance of preparing my own heart and being where I want to be with the Lord before I walk up on stage,” she says.

“The only way I can feel comfort-

able leading others is if I know I am doing right myself.”

This is why Jana and the other worship team members always pray together before leading a service.

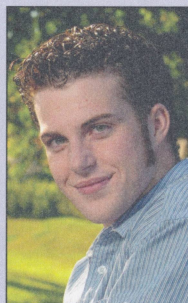
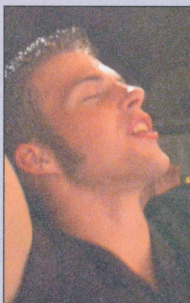
Through her Bible and ministry classes at Northwest, Jana says she has come to a better understanding of biblical worship, and she believes that scripture should be a central element of a worship service.

Using scripture as part of worship services brings unity and focus, she says. The students, faculty, and staff at Northwest University come from a variety of Christian backgrounds, but “scripture is something we all have in common,” Jana states.

John Weaver, a Freshman ministry major, states that the best aspect of Monday night Pursuit is “the absolute heart of worship that goes throughout the service and the students, worship leaders, and faculty who come.”

“I never walk away from Pursuit without it changing my life,” he says.

Before coming to Northwest as a student, John thought that chapel and Pursuit were just part of the routine of life at a Christian university. Now he sees that they are much more: “They are part of the

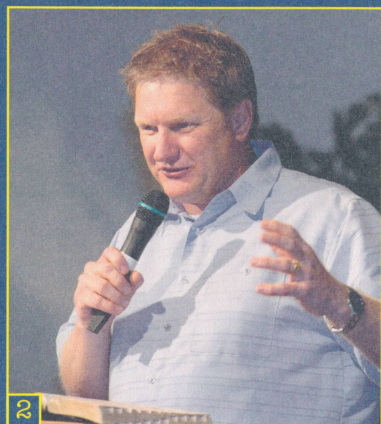
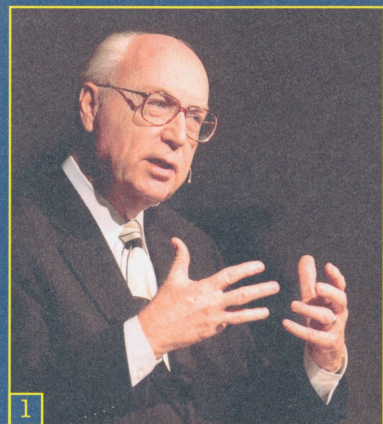


lifestyle of preparing for ministry,” he says.

As John looks forward to serving as a pastor in the future, he is grateful for the lessons about worship and ministry that he is learning at Pursuit and in chapel.

“As a minister, I set the example for my congregation and I have to live a life that is real and true. Chapel helps me to learn how to live that life not just in a service but day to day in every choice I make,” he says.

“It has increased my heart for worship and given me the tools to prepare for the calling I have received.”

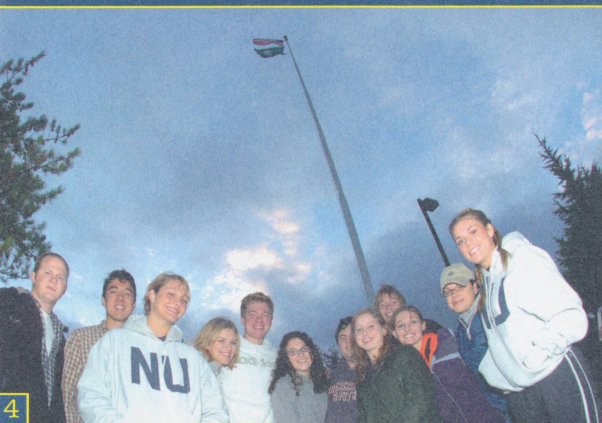


be...

Pursuit



Students Jenilee LeFors, Michelle Thomas and Lindsay Fosner worship at Pursuit.



4



5



6

Evangelism through China by Bicycle



Melissa Steinart is at left with the statue and above in the purple helmet. Professor Oleson is above in the yellow shirt. Michelle Bartlett in the pink shirt and Alex Little in the dark blue shirt are also students at Northwest.

Melissa Steinert, an Intercultural Studies major, spent two weeks in China last summer experiencing the culture and sharing her faith. She went with a team led by David Oleson, Assistant Professor of Missions and Mathematics.

Traveling by bicycle allowed them to minister in small villages that couldn't be reached by car. "We did something challenging for our bodies so we could affect people spiritually," she comments.

They talked with people in their homes and built friendships with students at a boarding school. Melissa was touched by the people's openness and looks forward to going back to China.

"Your heart goes out to them," she states.

Important Dates

FOR SENIORS

March 1: Financial Aid
Priority Deadline

You will receive first priority in financial aid awards if you apply by March 1. There are two steps to the process of gaining financial aid:

1. Complete the Free Application for Federal Student Aid (FAFSA). This can be done on paper or on the Web at www.fafsa.ed.gov. Send your FAFSA directly to the federal processor and include Northwest University's Title IV code (003783) on the form. Allow two to three weeks for your information to be processed and sent to Northwest. We recommend that both you and your parents complete your taxes before filling out your FAFSA.

2. Complete the Northwest University Financial Aid Application, available in the university's application packet or online from the university's Web site at www.northwestu.edu. Complete this application and return it to Northwest University, P.O. Box 579, Kirkland, WA 98083-0579.

FOR EVERYONE

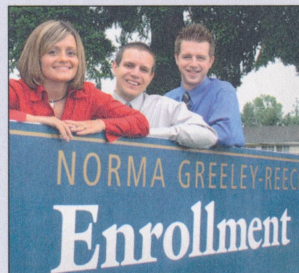
Visit Campus on a *Northwest Friday*:
1/28, 2/25, 3/18, or 4/15/2005

For more information about Northwest Fridays or to register, call 800.669.3781 or visit www.northwestu.edu.



Lana Walter, left, is Director of Financial Aid.
Rose-Mary Smith, right, is Director of Admissions.

Our desire is to see students succeed. And one of the most important keys to success is a good beginning. We're here to help you find the answers to your questions, and to help you find the financial aid you need, so you can get a great start on your college journey!



For more information, please call **800.669.3781** or visit our Web site at www.northwestu.edu. Genevieve, Ben, and Roy are always available to help you!

More than 50 Academic Programs

ACCOUNTING
BIBLICAL LANGUAGES
BIBLICAL LITERATURE
BIBLICAL STUDIES
BIOLOGY EDUCATION
BUSINESS ADMINISTRATION
CHILDREN'S MINISTRIES
CHORAL MUSICAL EDUCATION
CHRISTIAN EDUCATION
COMMUNICATION
COMMUNICATION AND PREACHING
CONTEMPORARY MUSIC INDUSTRY
DRAMA
ELEMENTARY EDUCATION
ENGLISH
ENGLISH / LANGUAGE ARTS EDUCATION
ENGLISH AS A SECOND LANGUAGE
ENVIRONMENTAL SCIENCE
FILM STUDIES
GENERAL MINISTRIES
GENERAL MUSIC EDUCATION
GENERAL STUDIES
HEALTH AND FITNESS EDUCATION
HEALTH SCIENCE
HISTORY
HISTORY EDUCATION
INSTRUMENTAL MUSIC EDUCATION
INTERCULTURAL STUDIES
INTERDISCIPLINARY STUDIES
LEGAL STUDIES (PRE-LAW)
LITERATURE
MANAGEMENT
MARKETING
MATHEMATICS EDUCATION
MISSIONS
MUSIC
MUSIC EDUCATION
MUSIC MINISTRY
NEW TESTAMENT GREEK
NURSING
ORGANIZATIONAL COMMUNICATION
PASTORAL CARE
PASTORAL MINISTRIES
POLITICAL SCIENCE
POLITICAL SCIENCE AND HISTORY
PSYCHOLOGY
RELIGION AND PHILOSOPHY
SECONDARY EDUCATION
SOCIAL STUDIES EDUCATION
TEACHING ESL
THEATRE ARTS EDUCATION
WRITING
YOUTH MINISTRIES

Northwest UNIVERSITY

P.O. Box 579
Kirkland, WA 98083-0579

ADDRESS SERVICES REQUESTED

Get in touch. Keep in touch.

TOLL-FREE
800.669.3781

WEB SITE:
www.northwestu.edu

NON-PROFIT ORG.
U.S. POSTAGE
PAID
SEATTLE, WA
PERMIT NO. 4